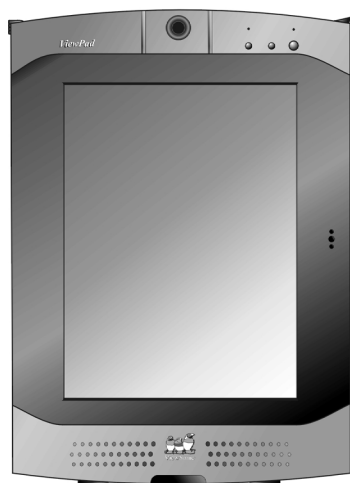


ViewSonic®

ViewPad™ 1000 *Tablet PC*



User Guide

Contents

Table of Figures

Figures	vii
---------------	-----

Introduction

Your ViewPad 1000 Tablet PC	2
Precautions	2

ViewPad 1000 Features

Software Included	3
Performance Features	3
Accessories	4

Basic Setup

System at a Glance	5
Front View	5
Back View	7
AC Adapter	9
Keyboard Features	10
Display	12
Audio Features	16
Modem	16
Fast Ethernet Network Adapter	17
802.11b Wi-Fi Lan Adapter	17
Battery Power and Management	18
Charging the Battery and Charging Time	18
Installing and Removing the Battery Pack	19
About Windows 2000® Power Management Feature	21

Using Software

Touch Screen Calibration	24
Calibrating the Touch Screen	24
Using the Digital Camera	26
Capturing a Picture Using Windows Imaging®	26
Screen Rotation	28
Rotating the Screen Display	28
Virtual Keyboard	29
Activating the Virtual Keyboard	29

Exiting the Virtual Keyboard	29
LCD Brightness Control	30
Activating the Brightness Control	30
Citrix® ICA® Client	30
PenOffice® for Windows®	31
Working Without a Keyboard	33
Disabling the Secure Boot Ctrl-Alt-Delete Requirement	33
Automatic Reboot	34
Enabling Automatic Reboot	34
Standby Resume Security	36
Disabling the Standby Resume Password Prompt	36
Upgrading the Memory in Your ViewPad 1000	37
Upgrading the System Memory	37
Installing a New Memory Module	37

Troubleshooting

An Initial Check List	40
Audio Problems	41
Speaker	41
Sound Recording	41
Hard Disk Problems	41
Spin	41
Abnormal Sounds	41
Drive is Full	42
Drive is Slow	42
File Corruption	42
Display Problems	42
Blank Screen	42
Screen is Difficult to Read	42
The Screen Flickers	43
Wireless Keyboard and Pointing Device Problems	43
Keyboard is Non-responsive	43
Character Repetition	43
Bios Problems	43
CMOS Checksum Failure Message	43
Infrared Problems	44
Port Failure	44
Memory Problems	44
Increased Memory is not Recognized	44
Insufficient Memory Error Message	44
Modem Problems	45
Connection Difficulties	45

Network Adapter Problems	45
Adapter Nonresponsive	45
100-Mbps Mode Nonresponsive	45
PC Card (PCMCIA) Problems	46
PC Cards do not Function	46
PC Card not Recognized	46
PC Card Removal Locks Up Windows®	46
Performance Problems	46
Overheating	46
Program Slowing	47
Power, Start, and Battery Problems	48
Power Down on Startup	48
Diminishing Battery Life	48
Recharge Failure	48
Printing Problems	49
File Print Failure	49
Screen Print Failure	49
USB Problems	50
USB Failure	50

Appendix

ViewPad 1000 Product Specifications	51
Processor and Core Logic	51
Storage Capacity	51
System Memory	51
Operating System	51
LCD	51
Graphics	51
LAN	52
Wireless Lan	52
Modem	53
Audio	53
Ports	54
Other Standard Hardware	54
PC Card Slot	54
Power	54
BIOS	55
Physical Specifications	55
Optional ViewPad Dock	56
Customer Support	57
Cleaning and Maintenance	58
Limited Warranty	59

Safety Guidelines	60
Compliance Information	61
Federal Communications Commission Notice	61

Figures

Figure 1	The Front View	5
Figure 2	The Back View.....	7
Figure 3	The AC Adapter.....	9
Figure 4	The Wireless Keyboard	10
Figure 5	The Embedded Numeric Key Pad	11
Figure 6	The SiS Icon on the Windows® Task Tray.....	14
Figure 7	Navigating to the Display Setting Window.....	14
Figure 8	The SiS Display Settings Window	15
Figure 9	The Speaker Symbol.....	16
Figure 10	The Battery Power Indicator	18
Figure 11	Detaching the Battery Pack.....	21
Figure 12	The Power Options Panel.....	22
Figure 13	The Touch Screen Calibration Icon.....	24
Figure 14	The Calibration Applet Button.....	25
Figure 15	The Calibration Screen	25
Figure 16	Launching the Camera Utility Software	26
Figure 17	The Camera Image Window.....	27
Figure 18	The Pivot Icon.....	28
Figure 19	The ViewPad 1000 in Horizontal Mode	28
Figure 20	The Desktop Virtual Keyboard Icon.....	29
Figure 21	The Virtual Keyboard Icon Menu	29
Figure 22	The Brightness Control on the Menu.....	30
Figure 23	The BackLight Control Options.....	30
Figure 24	The Pen, Marker, and Word MarkUp Icons	31
Figure 25	The Users and Passwords Window.....	33
Figure 26	The Startup and Recovery Button	34
Figure 27	The Automatic Reboot Option	35
Figure 28	The Power Options Window	36
Figure 29	The Memory Slot Cover.....	38
Figure 30	Removing a Memory Module.....	38
Figure 31	Installing a Memory Module.....	39

Copyright © ViewSonic Corporation, 2001. All rights reserved.

ViewPad is a trademark of ViewSonic Corporation. ViewSonic, and the three birds logo are registered trademarks of ViewSonic Corporation.

Microsoft, Windows, Microsoft Explorer and Internet Explorer, Microsoft Word, MSN Messenger, Excel, DirectX, DirectSound, and the Windows logo are trademarks of Microsoft Corporation in the United States and other countries.

Citrix, WindView, and ICA are registered trademarks of Citrix Systems, Inc. MetaFrame is a trademark of Citrix Systems, Inc.

VESA is a registered trademark of the Video Electronics Standards Association.

CalliGrapher® & PenOffice® Software. Copyright®

Intel and Celeron are registered trademarks of Intel Corporation

ENERGY STAR is a registered trademark of the U.S. Environmental Protection Agency (EPA).

As an ENERGY STAR® partner, ViewSonic Corporation has determined that this product meets the ENERGY STAR® guidelines for energy efficiency.

Disclaimer: ViewSonic Corporation shall not be liable for technical or editorial errors or omissions contained herein; nor for incidental or consequential damages resulting from furnishing this material, or the performance or use of this product.

In the interest of continuing product improvement, ViewSonic Corporation reserves the right to change product specifications without notice. Information in this document may change without notice.

No part of this document may be copied, reproduced, or transmitted by any means, for any purpose without prior written permission from ViewSonic Corporation.

Product Registration

To meet your future needs, and to receive any additional product information as it becomes available, please register your product on the Internet at: www.viewsonic.com. The ViewSonic® Wizard CD-ROM also provides an opportunity for you to print the registration form, which you may mail or fax to ViewSonic.

For Your Records

Product Name:	ViewPad 1000 Tablet PC
Model Number:	VSVPD22974-1M
Document Number:	A-CD-ViewPad 1000-1
Serial Number:	_____
Purchase Date:	_____

Product Disposal at End of Product Life

ViewSonic is concerned about the preservation of our environment. Please dispose of this product properly at the end of its useful life. Your local waste disposal company may provide information about proper disposal.

Introduction

Your ViewPad 1000 Tablet PC

Congratulations on your purchase of a ViewSonic® ViewPad™ 1000 Tablet PC. With your ViewPad 1000 you will be able to organize and access important business and personal information. In addition, you will be able to send and receive e-mail and access the Internet through the use of the built-in WAN, LAN, and Wi-Fi™ wireless connectivity.

This user guide will help you set-up your ViewPad 1000 and introduce you to its many features.

Important! Save the original box and all packing material for future shipping.

Your ViewPad 1000 package includes:

- ViewPad 1000
- ViewPad 1000 Battery
- ViewPad Wireless Keyboard with Pointing Device
- ViewPad Styli (two)
- Power Cord
- Power Adapter
- Slip Case
- AA Batteries (two) for Wireless Keyboard
- ViewPad Recovery CD-ROM (includes Windows 2000 Professional® OS)
- ViewPad Utility CD-ROM (includes the User Guide)
- ViewPad 1000 Quick Start Guide

Precautions

- For best viewing conditions view the screen from a distance of 15” to 18”
 - **DON'T TOUCH THE SCREEN WITH YOUR FINGERS.** Oils from the skin are difficult to remove.
 - **NEVER REMOVE THE REAR COVER.** Your ViewPad 1000 contains high voltage parts. You may suffer serious injury if you touch these parts.
 - Avoid exposing the screen to direct sunlight or another heat source. The screen should be facing away from direct sunlight to reduce glare.
 - Always handle your ViewPad 1000 with care; dropping your ViewPad 1000 could void the warranty.
 - Do not operate your ViewPad 1000 outside in a wet, damp or extremely cold environment.
 - Do not place heavy objects on the screen, video cable, or power cord.
 - If smoke, abnormal noise, or strange odor is present, immediately switch the ViewPad 1000 off and call your dealer or ViewSonic.
 - Use only the AC/DC power adapter supplied with your ViewPad 1000
-

ViewPad 1000 Features

Software Included

- Windows 2000 Professional® - which includes:
 - Microsoft Internet Explorer®
 - Microsoft Outlook Express®
 - Microsoft NetMeeting®
 - Microsoft Media Player®
 - Imaging for Windows®
- Citrix® ICA® Client
- Pivot Software from Portrait Displays, Inc.
- PenOffice® Handwriting Recognition Software
- Virtual Keyboard

Performance Features

High Performance Processor

The ViewPad™ 1000 is equipped with 800MHz Intel® Celeron® processor with 128-K L2 cache.

Advanced Graphic Engine

The ViewPad 1000 comes with an integrated AGP-bus 2D/3D video processor for high performance graphics. The video chip also incorporates a hardware-accelerated playback feature which gives you smooth MPEG video. A 3D graphics capability also adds realism to PC games.

Expandability

The system offers two SDRAM slots for expansion (up to 512 Mb), allowing users to easily increase the system's capacity as the need arises.

Bright LCD Touch-screen Display

The system is equipped with 10.4-inch TFT SVGA touch-screen display panel for clear text and brilliant colors.

Portrait Mode or Landscape Mode

To serve your specific needs, the ViewPad 1000 can be used in either Portrait or Landscape mode.

Audio Capability

The system is equipped with internal audio record and playback functions, including 3D (three-dimensional) audio, 64-voice DirectSound channel support, and built-in hardware wave-table.

Wireless LAN, Fast Ethernet and Modem Connectivity

For network access capability, the ViewPad™ 1000 provides a built-in 802.11b Wi-Fi LAN adapter, a Fast Ethernet adapter, and a 56K modem.

Additional Expansion and Connectivity

The ViewPad 1000 offers a full array of I/O ports including two Universal Serial Bus (USB) ports, microphone and audio out jacks, external VGA port, wireless keyboard infrared port, infrared data port, and a 16-pin connector for the optional ViewPad Dock. The Viewpad 1000 also includes a Type II PC Card slot (PCMCIA v2.1) for additional expansion.

Accessories

Your ViewPad 1000 offers expansion options through its USB ports and PCMCIA (Personal Computer Memory Card International Association) slot.

Basic Setup

System at a Glance

Front View

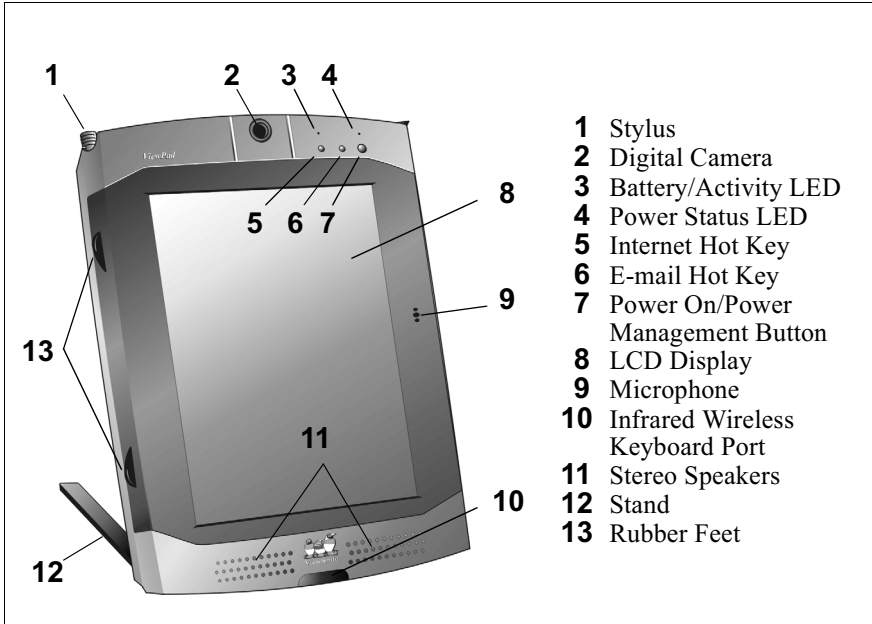


Figure 1: The Front View

Front View Features

Stylus - Use the stylus to Tap or Double-tap on an application icon, to draw in a graphics application, to select items in a menu or to select letters and numbers on the virtual keyboard.

Right-click Mode - To use the stylus in Right-click mode, click the mouse icon on the task bar to toggle from Left-click to Right-click mode.



Digital Camera - The built-in Digital CCD camera (with up to 640x480 resolution) allows you to take photos or record a video clip. The focus ring allows you to focus the camera's lens. See the Using the Digital Camera section for additional information.

Battery Status/Activity Mode LED - A flashing green light indicates that the battery pack is being charged. (See the LED Status Indicator Section for details.)

Power Status LED - The multi-color LED indicates the current power status of the ViewPad™ 1000. (See the LED Status Indicator Section for details.)

WWW Internet Hot Key - The Internet Hot Key launches the Microsoft Internet Explorer application automatically.

E-mail Hot Key - The E-mail Hot Key launches Microsoft Outlook Express. Be sure you have already setup an ISP account and MS Internet Explorer before using this feature.

Power On/Power Management Button - The Power/Suspend button turns the system on and off. It also acts as a system suspend key. Press momentarily to turn on the system. Press and hold for at least 3-4 seconds to turn off the system. These settings can be changed by going to Start > Settings > Control.

LCD Display - The ViewPad 1000 is equipped with a 10.4" touch-screen SVGA TFT display.

Built-in Microphone - The built-in microphone enables you to record sound and to use speech-enabled applications.

Wireless Keyboard Infrared Port - The wireless infrared port enables cableless data transfer with the wireless keyboard.

Built-in Stereo Speakers - The built-in speakers provide stereo sound.

Stand - The stand allows the ViewPad 1000 to be positioned vertically (Portrait Mode) or horizontally (Landscape Mode) on a desktop. You will need to rotate the display content 90 degrees using the Pivot software.

Rubber Feet - Rubber feet allow the ViewPad 1000 to be positioned on its side.

Back View

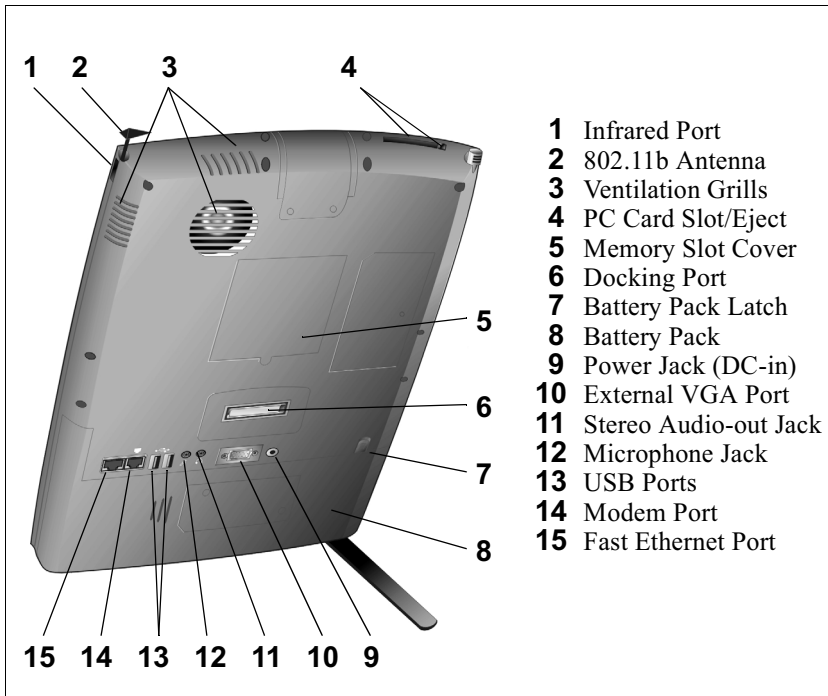


Figure 2: The Back View

Back View Features

Infrared Port - The Infrared Data Association (IrDA) compliant serial infrared port enables 115Kbps (SIR mode) cableless data transfer with IrDA 1.1-compatible external devices.

802.11b Antenna - The built-in 802.11b wireless LAN antenna is used to transmit and receive data from an 802.11b access point.

Ventilation Grills - These fan grills allow cooling air to circulate through the heat regulation system.

PC Card Slot (PCMCIA) and Card Eject Button - A PC Card (PCMCIA) would be inserted here. Press the eject button to release a PC Card.

Memory (SDRAM) Expansion Slot Cover - Two SODIMM expansion slots are located here. One of the slots is already occupied by a 128-Mb SODIMM module.

Docking Port - The docking port allows the ViewPad™ 1000 to connect to the optional ViewPad Dock.

Battery Pack and Battery Latch - The battery pack is a built-in power source for the ViewPad™ 1000. Slide the battery latch to release the battery pack.

Power Jack (DC-in) - The AC Adapter supplies power to the ViewPad 1000 and charges the ViewPad battery. When used, the AC Adapter connects to the DC-in.

External VGA Port - The 15-pin analog VGA output port connects your ViewPad 1000 to an external monitor or projector.

Stereo Audio-out Jack - Stereo headphones or external speakers are connected to the Audio-out jack.

Microphone Jack - Microphones or external speakers can be connected to the ViewPad 1000 through the Microphone Jack.

USB Ports (2) - The two Universal Serial Bus (USB) ports enable the ViewPad 1000 to connect to a wide variety of USB devices. These ports conform to USB v1.1 plug-and-play standards.

Modem Port - The RJ-11 modem port enables you to connect into an external phone jack for fax and modem functions using a standard phone cable. The built-in 56Kpbs modem is V.90 compatible.

Fast Ethernet Port - The Fast Ethernet port enables you to connect to a network hub via a RJ-45 cable. The Fast Ethernet port conforms to 100BASE-TX transmission protocol.

AC Adapter

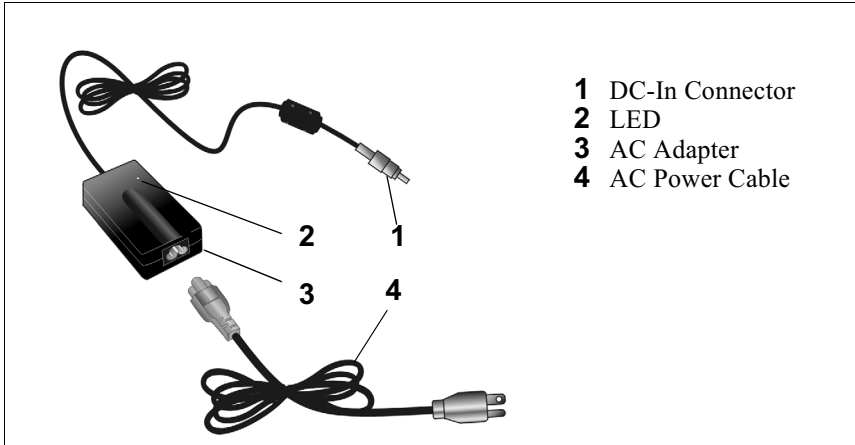


Figure 3: The AC Adapter

AC Adapter Features

DC-in Connector - The DC-in connector inserts into the power jack on the ViewPad™ 1000.

LED - The LED light appears green when the unit is plugged into a valid AC source.

AC Adapter - The adapter converts alternating current (AC) into direct current (DC) for the ViewPad 1000.

AC Plug - The three-prong AC plug plugs into an AC wall outlet.

Keyboard Features

Your ViewPad™ 1000 comes with a Wireless Keyboard.

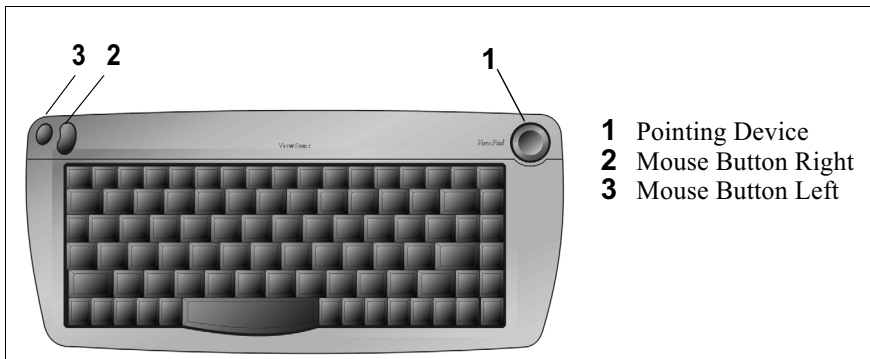


Figure 4: The Wireless Keyboard

The Wireless Keyboard is used to enter data into the ViewPad 1000. It has an integrated pointing device, embedded numeric keypad and cursor control keys.

Wireless Keyboard Features

Pointing Device - Move the integrated pointing device just as you would a mouse or touch pad.

Mouse Button Right - This button works like the *right* button of a mouse.

Mouse Button Left - This button works like the *left* button of a mouse.

Scroll Lock - Press the keyboard's Scroll Lock key while pressing one of the following additional keys to use scroll lock features:

- Up - press the 8-key
- Down - press the K-key
- Left - press the U-key
- Right - press the D-key

Embedded Numeric Key Pad

Press Num Lock to enable the embedded numeric key pad.

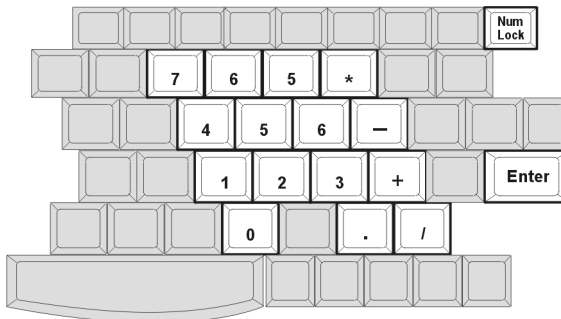


Figure 5: The Embedded Numeric Key Pad

Pad numbers and operators are printed on the front sides of the keys. The embedded numeric key pad is complete with arithmetic operators (+, -, *, /). Press Num Lock again to revert to normal character keys.

Windows® Keys

Your keyboard has two Windows® keys:

Start Key - This key allows you to pull up the Windows® Start Menu:



Application Menu Key - This key brings up the popup menu for the application you are currently in.



LED Status Indicators

The LED Status Indicators display the operating status of your ViewPad™ 1000. ViewPad 1000 LED status indicators include:

The Power Status/Activity Mode LED



- Green Light - indicates that the battery is charging.
- Light Off - indicates that battery is charged or that the power adapter is not attached.

The Battery Status LED



- Steady Green - indicates that the Viewpad 1000 is on.
- Flashing Green - indicates that the hard drive is being accessed.
- Solid Amber - indicates that the ViewPad 1000 is in standby mode.
- Flashing Red - indicates that the ViewPad 1000 is in the process of saving to disk in preparation for going into hibernation mode.
- Light Off - indicates that the ViewPad 1000 is off or in hibernation.

Display

Your ViewPad 1000 uses a high performance 10.4-inch active matrix TFT panel that will display up to 16.7 million colors at 800 x 600 resolution.

Caution: Do not place heavy objects on the LCD panel. Doing so may damage the display

Adjusting the Display Brightness

Click the Brightness Control icon on the Windows® Task Tray to access the Brightness Control options.

Extending the Life of the TFT Display Device

Observe the following guidelines to maximize the life of the display.

- 1 Set the brightness to the lowest comfortable setting.
- 2 When working at your desk, connect your ViewPad 1000 to an external monitor and disable the internal display.
- 3 If you are using AC power and have no external monitor attached, change to suspend mode when not in use.

Multimonitor Function

The ViewPad™ 1000's display and multimedia capabilities are great for giving presentations. You can also connect an external monitor or projector when giving presentations. The ViewPad 1000 supports simultaneous independent LCD and CRT displays. The multimonitor capability provides you with more working room by allowing you to expand your desktop across two display devices.

Activating the Multimonitor Function

- 1 Use the Wireless Keyboard's Right mouse button to Right-click on the SiS icon located at the lower right-hand corner of the Windows® task tray.



Figure 6: The SiS Icon on the Windows® Task Tray

- 2 Go to Display Property > Display Setting.



Figure 7: Navigating to the Display Setting Window

- 3 Disable Auto in the Display Combination box if it is already checked. Make sure you have connected the ViewPad™ 1000 to an external plug-and-play capable CRT monitor, LCD monitor, or RGB projector.

Note: You will need to re-start the ViewPad 1000 in order to use this utility.

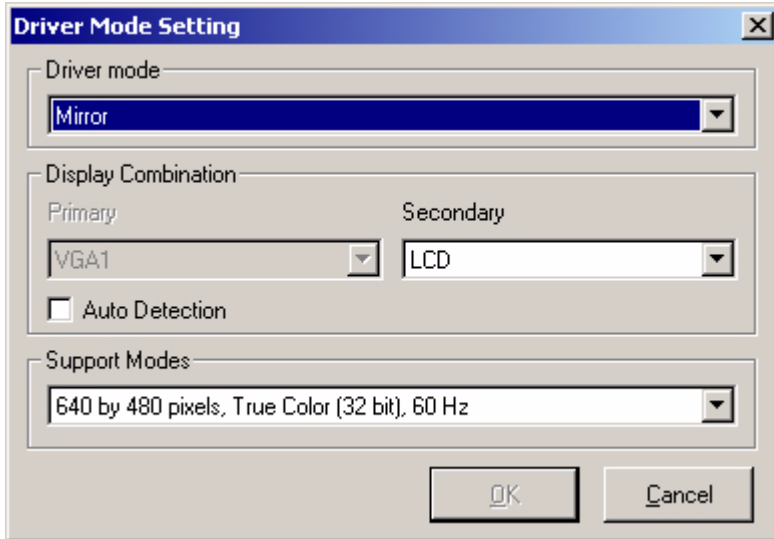


Figure 8: The SiS Display Settings Window

- 4 Once you have restarted Windows®, repeat steps 1-3 and select Multimonitor in the Driver mode box.

Driver Mode Options:

Single - Either the LCD equipped or the CRT attached will be active.

Mirror - Windows® will appear simultaneously on both the ViewPad™ 1000's LCD panel and the external display device.

Multimonitor - Different applications can be run independently across two display devices.

Display Combination:

- LCD2 - means the ViewPad 1000's LCD display.
- VGA1 - means the external display.

Audio Features

Adjusting the Volume in Windows®

- 1 Click the speaker symbol in the task tray in Windows®.

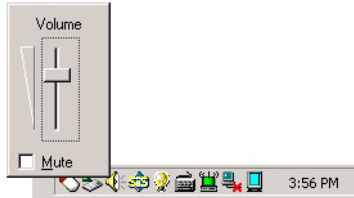


Figure 9: The Speaker Symbol

- 2 Drag the volume control tray up or down to adjust the volume.
- 3 Click Mute to temporarily silence the speaker without changing the volume setting.

Voice Recording

When you begin voice recording using the system's built-in microphone, be sure that you are speaking within 8 inches (20 centimeters) of the microphone.

You will need to use audio processing software to enable the built-in microphone. For example, you may use Microsoft Sound Recorder. To access voice recording, go Start > Programs > Accessories > Entertainment.

Modem

Your ViewPad™ 1000 comes equipped with a 56Kbps V.90 internal fax/modem. This enables you to access networks and to send and receive e-mail through a standard telephone line.

Note: Windows® does not support its own fax function. To enable a fax function, install a fax communication software on your PC.

Connecting the Modem

- 1 Plug one end of the phone line into the modem port located on the back of the ViewPad 1000.
- 2 Plug the other end of the line into an analog phone wall outlet.

Warning: The internal modem is intended for use on an analog phone line, also called a POTS (Plain Old Telephone Service) line. This modem cannot be connected directly to a digital telephone line such as those commonly found in

a business office. You can obtain an analog converter compatible with the your digital phone line.

Fast Ethernet Network Adapter

The ViewPad™ 1000 is equipped with a 10/100BASE-T Ethernet network adapter. This allows you to access and transmit data in a local area network.

Connecting to the Network

Use Unshielded Twisted Pair (UTP) Ethernet cable only.

- 1** Press one end of the UTP cable into the Fast Ethernet Port (located on the back of the ViewPad 1000) until the connector snaps securely into the port.
- 2** Connect the other end of the cable to either an Ethernet outlet jack or to an RJ-45 port on a UTP concentrator or hub in the network.

Cabling Restrictions for Networks

The following restrictions should be observed for 100BASE-T networks:

- The maximum cable run length should be 100 meters (328 feet).
- For 100-Mbps operation, use Category 5 wiring and connections. Consult a Windows® manual for the software installation, configuration, and operation of the network.

802.11b Wi-Fi Lan Adapter

Your new ViewPad 1000 comes with a built-in 802.11b Wireless LAN adapter. This allows you to access and transmit data wirelessly to an 802.11b access point. Consult your network administrator for instructions on connecting your wireless 802.11b adapter to the network.

Battery Power and Management

Before using the ViewPad™ 1000 Tablet PC for the first time, charge the battery for at least 6 hours. Make sure the battery is fully charged before using.

The TFT display, central processor, and hard disk drive are the major power consumers. An understanding of power management can help you work longer sessions before having to recharge the battery.

The Lithium-Ion Battery

Your ViewPad 1000 uses a removable nine-cell Lithium-Ion battery pack that provides power when you don't have access to an AC outlet. The Battery LED indicator will come on when the ViewPad 1000 is operated on battery power.

Handling Tips

- Do not touch the metal ends of the battery connector.
- Do not expose battery packs to temperatures below 32 degrees Fahrenheit (0 degree Celsius) or above 140 degrees Fahrenheit (60 degrees Celsius). Doing so may adversely affect the battery pack.

Charging the Battery and Charging Time

With the battery pack inserted into the ViewPad 1000, plug the AC adapter into the ViewPad 1000 and into an electrical outlet.

The charging time is approximately 2 hours when the ViewPad 1000 is turned off.

If the ViewPad 1000 is plugged into an AC outlet, the battery will still charge with the ViewPad 1000 in operation. Charging an empty battery pack with the device On will require 6 hours rather than 2 hours to fully charge. When the battery is fully charged, the battery charge indicator turns off.

Note: Be sure to reserve adequate charge time before travelling.

Checking the Battery Level

You can check the remaining battery power in the Windows® battery status indicator located at the lower right-hand corner of the task tray.



Figure 10: The Battery Power Indicator

Note: The Battery Status icon only appears in the task tray while the unit is running on battery power. The Battery Status icon does not appear in the task tray while the unit is running off an external power source through the AC Adapter.

You can also access the power meter by clicking the Power Options icon in the Windows® Control Panel.

Prolonging the Battery's Life and Usage Cycles

There are ways to prolong the useful life of the battery.

- Store the battery pack at room temperature. Higher temperatures tend to deplete battery power at a faster rate.
- Make good use of the power management function. Save To Disk saves the most energy by storing current system contents in a hard disk space reserved for this function.
- Disable the parallel and serial ports if no devices are attached.
- Eject any PC Card from the card slot when not in use. Even when an inserted PC Card is not in operation, it still draws a small amount of power.

Battery Warning

Low Battery Warning

The Low Battery condition occurs when battery power falls to 6%. At this point, the green power LED indicator will blink and the system will beep once every 16 seconds.

Very Low Battery Warning

The Very Low Battery condition occurs at 3% power. The power LED indicator will blink and the system will beep at 4-second intervals.

When the ViewPad™ 1000 warns of its low battery condition, you will have about 5-10 minutes to save your current work.

Note: In the Standby suspend mode, a fully charged battery loses its power in roughly 1/2 - 1 day. When kept in storage, the battery's power will deplete in 1-2 months.

Installing and Removing the Battery Pack

To Install the Battery Pack:

- 1** Position the ViewPad 1000 bottom-side up on a secure flat surface.
- 2** Lower the battery pack into the battery compartment allowing for a quarter inch slide gap on the right-hand side. This will allow the battery to clear the unit's protruding power pins as it is dropped in.

-
-
- 3** Carefully slide the battery to the right until you hear a click indicating that the battery pack has locked into its bay.

To Detach the Battery Pack:

- 1** Position the ViewPad™ 1000 bottom-side up on a flat and secured surface.
- 2** Locate the battery latch. Slide the latch to its release position and hold.
- 3** While pressing the latch, push the battery's hard case to the left a quarter of an inch, then lift the battery from the battery compartment.



Figure 11: Detaching the Battery Pack

About Windows 2000® Power Management Feature

In addition to the ViewPad 1000's built-in power management BIOS utility, Windows 2000® also offers a similar power management feature. To access this feature, go to My Computer > Control Panel then double-click the Power Options icon.

The Windows® power management allows you to enter time-out values for the display and hard disk. You can also have your ViewPad 1000 automatically enter a standby mode or shut itself down in the event of low or critical battery

power. For more information on the power saving features, consult the Windows® manual or on-line help.

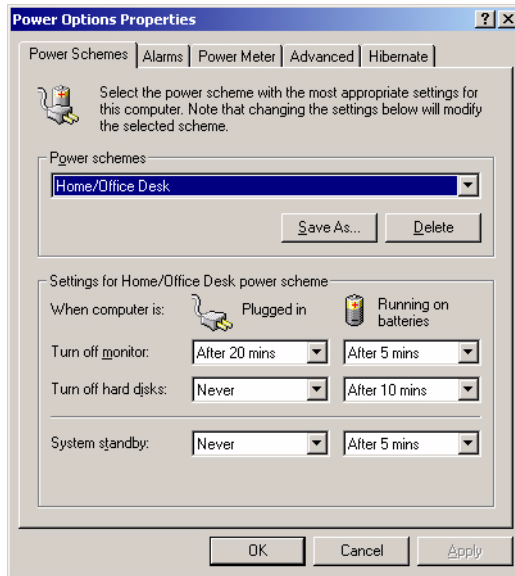


Figure 12: The Power Options Panel

Note: The ViewPad™ 1000's BIOS supports Windows® APM and ACPI modes. This illustration shows the Windows® ACPI dialogue box. Consult a Windows® manual on how to use Windows® ACPI settings or for more information on how to use the Windows® power management functions.

Power Saving Options

When battery power reaches critical low (3% remaining), the system will enter either one of the two power saving modes:

- Stand By mode
- Hibernate Mode - Save To Disk

Stand By Mode

In Stand By mode, hardware devices, such as display panel and hard disk, are turned off to conserve energy. (Go Start > Shut Down then select the Stand By option.)

Save To Disk - Hibernate Mode

In this mode, all system data is saved to the hard disk before powering down. When in the hibernate mode, very little power is drawn from the battery.

The amount of time the system requires to restore all its previous contents depends on how much RAM has been installed on your ViewPad™ 1000. Restoration times can range from 5 to 20 seconds.

For Windows 2000® users, Save To Disk action is handled by the operating system; therefore, no special disk partition or disk file is necessary.

To enable the hibernation function, go Start > Settings > Control Panels > Power Options > click the Hibernate option > then check the Enable Hibernate Support option.

The Power On/Power Management Button

The ViewPad 1000 uses a one-button design, meaning that both the power on/off and the system power management functions share the same physical button.

- Press and hold the Power On/ Power Management button for 2 seconds to turn the unit On.
- Click the Power On/ Power Management button to put the system into Stand By mode.

Using Software

The ViewPad™ 1000 has many unique capabilities including a touch sensitive screen, built-in digital camera, virtual keyboard, and screen pivoting. Some of these features may require you to perform a one-time setup to enable them to work properly.

Touch Screen Calibration

Although your touch screen is already factory-calibrated, there may be times when the ViewPad 1000 screen will need to be recalibrated for higher accuracy.

The touch screen is a thin membrane on top of the LCD display that responds to mechanical pressure on the screen's surface. The cursor on the screen is controlled using the stylus. If you notice the stylus tip touch-point not matching up with the cursor, you can recalibrate the touch screen.

Calibrating the Touch Screen

- 1 Go to Start > Settings > Control Panel then double-click the Touch Screen Calibrator icon.

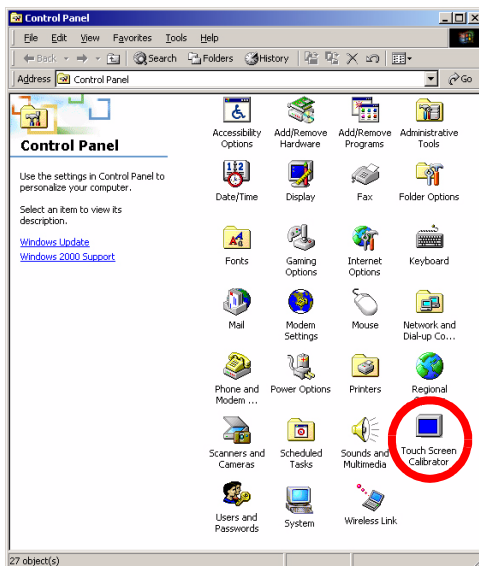


Figure 13: The Touch Screen Calibration Icon

- 2 The Calibration dialogue box will open.

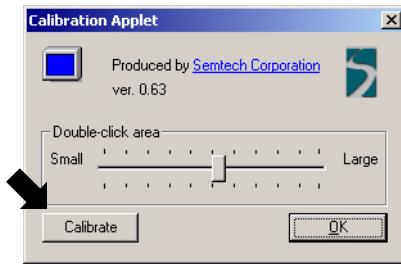


Figure 14: The Calibration Applet Button

- 3 Click the Calibrate button and you will see the following display.

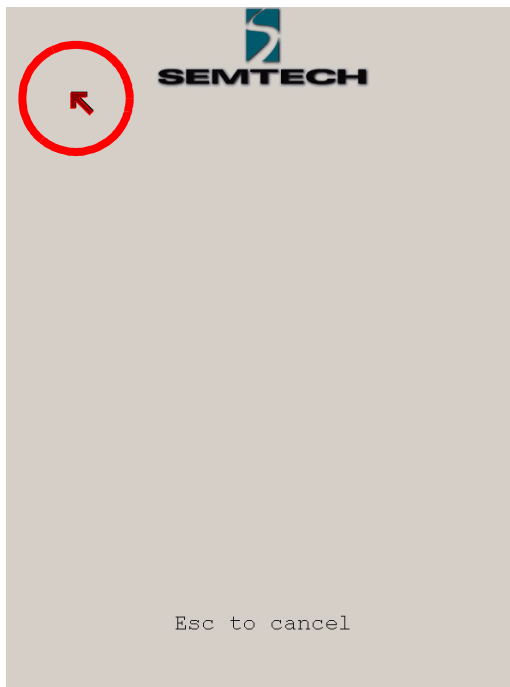


Figure 15: The Calibration Screen

- 4 Use the stylus to accurately touch the tip of the red arrow in the display. You will be asked to repeat the touching action 4 times.

- 5 If you wish to change the screen double-click area, you may do so in the Calibration Applet box by moving the slider.
- 6 Clicking OK exits the applet. The recalibration takes place immediately upon exiting the application.

Using the Digital Camera

The built-in digital camera allows you to record video and take still photos.

Capturing a Picture Using Windows Imaging®

- 1 Go to Start > Programs > Accessories > Imaging to start the Imaging application.
- 2 Go to File > Acquire Image to launch the camera's utility software.

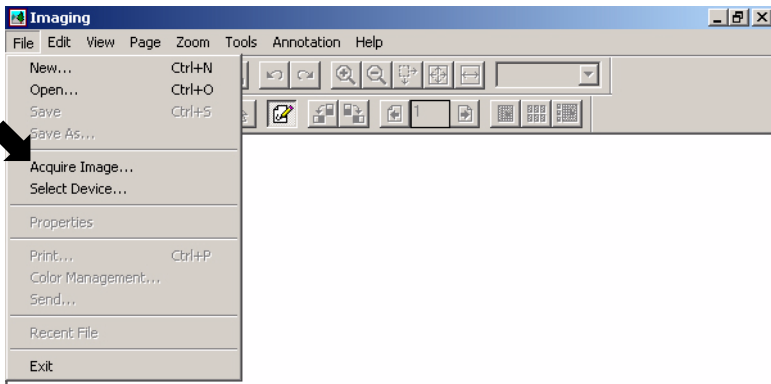


Figure 16: Launching the Camera Utility Software

- 3 You may need to adjust the focus ring for the sharpest image.
- 4 Click the camera icon on to take a snapshot. The image captured will be displayed on the bottom row.
- 5 Select an image for transfer by clicking on the image's display on the bottom row. Red outlining indicates that a particular frame has been selected for transfer.

- 6 Click on the Exit Transfer icon to exit the applet and transfer the selected image to the Windows Imaging® application.

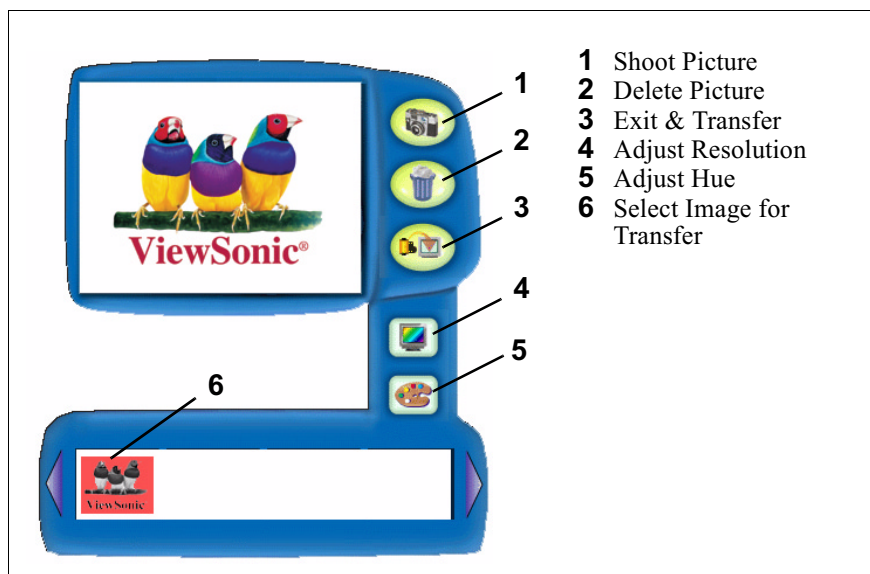


Figure 17: The Camera Image Window

Tips:

- To get the best image possible, use the best lighting possible.
- To transfer an image, select it from the bottom row before exiting. If no image is selected, no image will be transferred.
- To change the resolution setting, click on the Adjust Resolution icon shown above.

Screen Rotation

A special application, Pivot Software, allows you to use the ViewPad™ 1000 in Vertical (portrait) mode or Horizontal (landscape) mode.

Rotating the Screen Display

- 1 Click the Pivot icon at the right corner of the task tray.

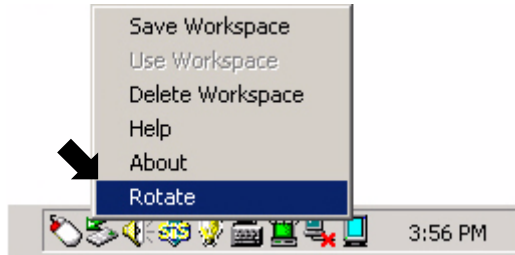


Figure 18: The Pivot Icon

- 2 Select Rotate to pivot the screen display 90 degrees.



Figure 19: The ViewPad 1000 in Horizontal Mode

Repeat steps 1 and 2 to revert to the previous mode.

Virtual Keyboard

The ViewPad™ 1000's touch-sensitive screen allows you to enter text easily using a virtual keyboard.

Activating the Virtual Keyboard

Double-click on the Virtual Keyboard icon on the desktop or at the lower right-hand corner of the task tray.



Figure 20: The Desktop Virtual Keyboard Icon

Exiting the Virtual Keyboard

Click on the Virtual Keyboard icon at the task tray's right corner then select Exit.



Figure 21: The Virtual Keyboard Icon Menu

LCD Brightness Control

Utility software is provided to allow you to control the brightness of the LCD display.

Activating the Brightness Control

- 1 Click the Brightness Control icon on the task tray.



Figure 22: The Brightness Control on the Menu

- 2 Select BackLight Control. The following box appears.



Figure 23: The BackLight Control Options

- 3 Press the Brighter (+) button several times to increment the brightness or press the Dimmer (-) button to decrease the brightness. Press OK to exit.

Citrix® ICA® Client

The Citrix® ICA® (Independent Computing Architecture) permits server-based computing. The ICA® protocol enables your ViewPad™ 1000 to function as a terminal when connected to a server running Citrix® MetaFrame™ software.

The Citrix® ICA® Client for Windows® lets you use your ViewPad 1000 to make an ICA® connection to a Citrix® server. When the ICA® connection is established, you can access applications and work with files as if you were working at the Citrix® server itself.

- 1 Tap on Start
- 2 Tap on Programs
- 3 Tap on Citrix® ICA®

PenOffice® for Windows®

PenOffice® adds a natural handwriting recognition capability to your ViewPad™ 1000 that works for all handwriting styles -- cursive, print, or mixed.

PenOffice® for Windows® gives you the freedom to enter information into applications quickly and efficiently. Pen strokes written in any application window are analyzed by PenOffice®. Employing advanced fuzzy logic and neural-net techniques, PenOffice® recognizes arbitrary alphanumeric strings as well as words from its integrated dictionary then converts them into text. The text is then sent to a target application.

PenOffice® offers a comprehensive spell checker for all Windows® applications and is based on ParaGraph's CalliGrapher® handwriting recognition technology.

Starting PenOffice®

Start PenOffice® from:

Start > Programs > ParaGraph > PenOffice® menu

The Pen, Marker, and Word MarkUp icons appear in the Windows® Task Tray when PenOffice® is running:



Figure 24: The Pen, Marker, and Word MarkUp Icons

Right-click one of these icons to bring up the PenOffice® program's Main Menu.

Modes of Operation

PenOffice® may be in one of four modes:

- Recognition Mode
- ScreenDraw Mode
- MS Word MarkUp Mode or
- Off Mode

You can switch modes by clicking on Notification icons, through the PenOffice® Main menu, or by using the PenOffice® toolbar.

Recognition Mode

When PenOffice® is running in Recognition mode (the Pen icon is dark), the program recognizes drawing on the screen as handwriting, interprets it then sends the result to the active application window (the window the text cursor is currently located). In this mode, you can use single- and double-clicking to select or activate items. You can also select text by the press-and-wait method.

ScreenDraw Mode

You can switch PenOffice® into the ScreenDraw mode by selecting it from the Main menu, from the PenOffice® Toolbar, or by tapping the Marker icon in the task tray. When you switch to ScreenDraw mode, the screen becomes frozen and grayed out. The Selection tool activates automatically when you enter ScreenDraw mode. Define the intended drawing area with the Selection tool by dragging it across the desired area -- the selection rectangle will become highlighted. After the selection is done, the default Drawing tool will substitute for the Selection tool. You can choose other tools and colors from the PenOffice® Toolbar for writing, highlighting, or drawing. The Eraser tool can be used to remove strokes -- just cross a stroke or a group of strokes with the tool's dashed line.

Select the part of the screen to be saved or mailed as a bitmap. Other available options include erasing or recognizing all ink to clipboard, or sending it as an .ink file by e-mail. Click the right mouse button to select the desired option from the pop-up menu.

MS Word Markup Mode

You can switch PenOffice® to MS Word MarkUp mode by selecting it from the Main menu, from the PenOffice® toolbar, or by tapping on the MarkUp icon in the task tray. The PenOffice® markup mode is available only if you have MS Word running as a foreground application. You can use the different drawing tools and colors for the markup pen just as you would in the Screen Draw mode. For more details, refer to the Microsoft Word markup feature.

PenOffice® Off Mode

PenOffice is in a suspended operation mode when no mode icons are selected. PenOffice does not process pen activities when in its suspend mode. Use the suspend mode if your application requires input from the pen (such as drawing or note taking activity).

Working Without a Keyboard

There are occasions when the OS requires you to press the Ctrl-Alt-Delete keys such as when Windows 2000® boots up.

Disabling the Secure Boot Ctrl-Alt-Delete Requirement

- 1 Go to Start > Settings > Control Panel then double-click on the Users and Passwords icon.
- 2 Go to the Advanced tab. Un-check the Require Users to Press Ctrl-Alt-Delete.
- 3 Press OK to exit.

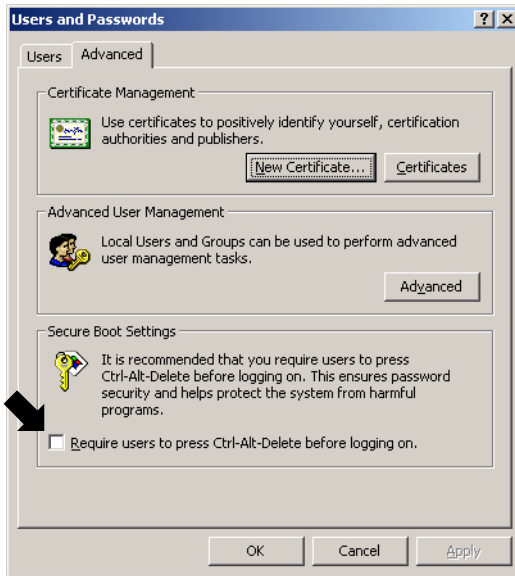


Figure 25: The Users and Passwords Window

Automatic Reboot

The system allows automatic rebooting when system locks up.

Enabling Automatic Reboot

- 1 Go to Start > Settings > Control Panel then double-click the System icon.
- 2 Go to the Advanced tab then click Startup and Recovery.

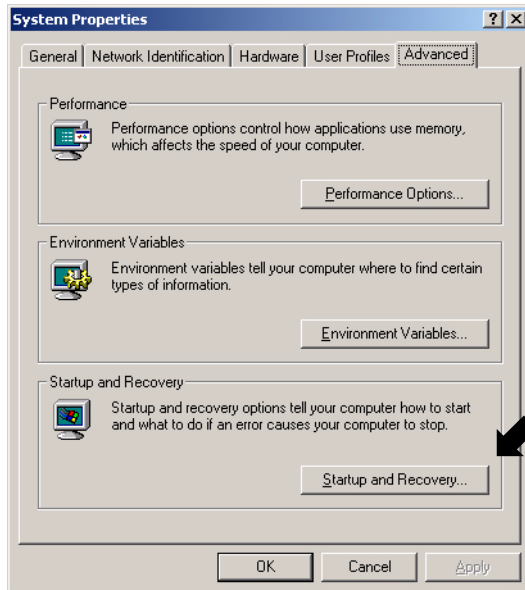


Figure 26: The Startup and Recovery Button

3 Activate Automatically Reboot then press OK to exit.

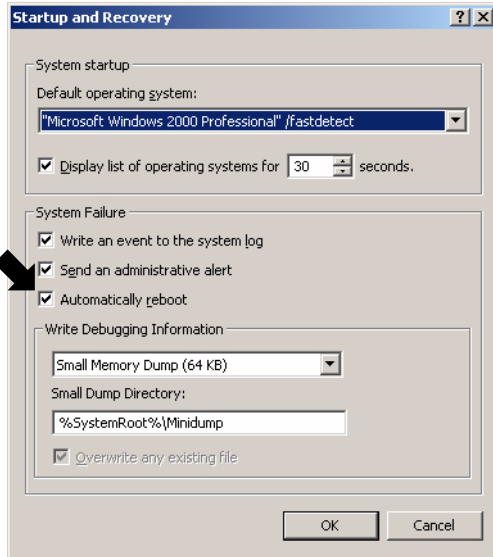


Figure 27: The Automatic Reboot Option

Standby Resume Security

If you enable the Windows® Standby Resume Security function, you will be prompted to enter a password via a mechanical keyboard after the computer wakes up from the suspend state.

Disabling the Standby Resume Password Prompt

- 1 Go to Start > Settings > Control Panel then double-click on the Power Options icon. The Power Options Properties window will open. Click the Advanced tab.
- 2 Leave the 'Prompt for password...' field unchecked. Press OK to exit.

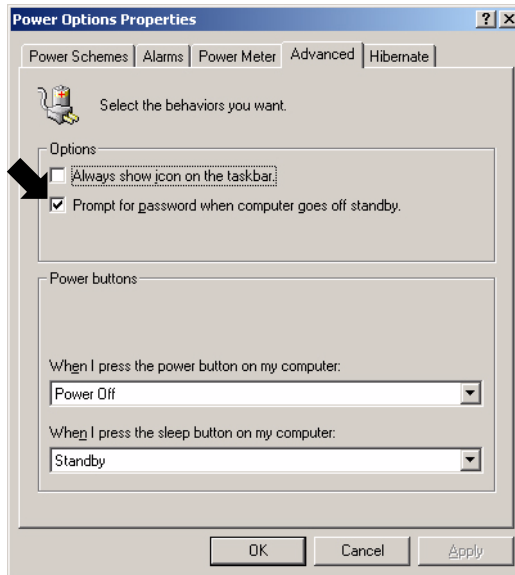


Figure 28: The Power Options Window

Upgrading the Memory in Your ViewPad 1000

Upgrading the System Memory

Many applications will run faster when the system's memory capacity is increased. The ViewPad™ 1000 provides two expansion sockets located on the back side of the system. One slot is already pre-installed with 128 MB of memory. You can increase memory by adding a Small Outline Dual In-line Memory Module, commonly known as a SODIMM. Module capacity can be 16 MB, 32 MB, 64 MB, 128 MB or 256 MB.

Note: Your ViewPad 1000 has been tested with a wide range of memory products on the market. However, not all memory modules are compatible. Go to www.ViewSonic.com for a list of compatible ViewPad 1000 modules.

Installing a New Memory Module

Upgrading the ViewPad 1000 memory is a delicate process. Please observe the following instructions carefully or have a qualified technician install memory for you. Damages due to mishandling during this procedure are NOT covered by the manufacturer's warranty.

Warning:

- Changing memory while your computer is in suspend mode or in power-saving mode may cause permanent damage to the ViewPad 1000. Make sure you turn off the power and to unplug the AC cord before proceeding with a memory upgrade.
- Do not touch a memory module's metallic contact edge to avoid possible damage from an electrostatic discharge.

To Install a New Module:

- 1** Power OFF the ViewPad 1000. Unplug the AC cord and all cables/devices attached to the system.
- 2** Place your hand on a large metal object momentarily to discharge any static electricity.
- 3** Place the ViewPad 1000 face-down on a soft flat surface.

- 4 Locate the Memory Slot Cover on the back of the computer then remove the Retaining Screw. Lift the memory door off the computer.

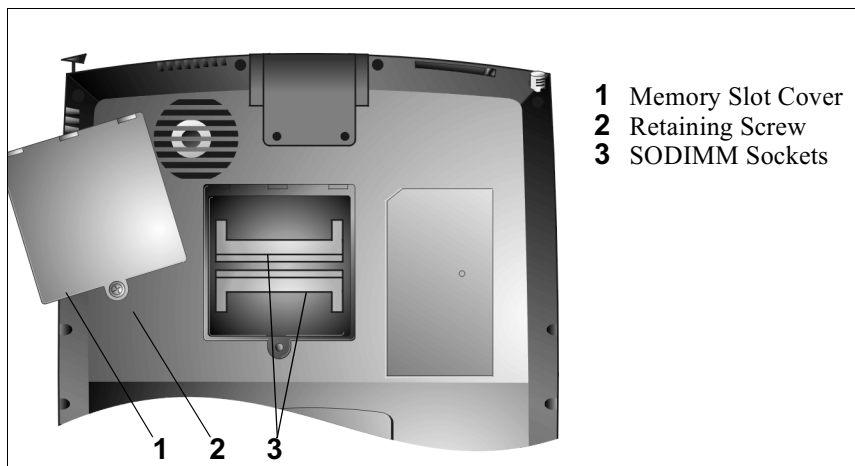


Figure 29: The Memory Slot Cover

- 5 To replace the current memory module, press outwardly on the latches located on both edges of the socket at the same time. The module should pop up to an angle of 30 degree (see diagram below.)

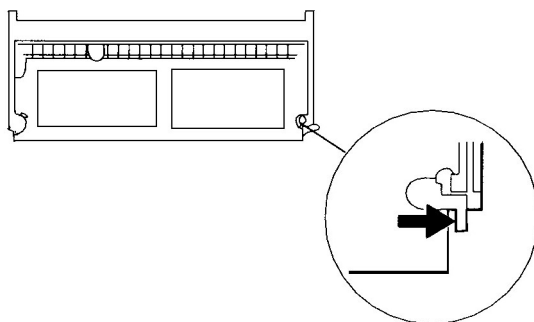


Figure 30: Removing a Memory Module

- 6 Pull the existing module out of the memory socket. Be sure to save it for future use.

Attention: Notice the notch on the extracted module. The notch's off-center placement allows the module to fit into the socket in only one orientation. The replacement module will be similarly notched to help you place it properly into its slot.

- 7 To install the new module, place it into the memory socket. The module will only fit in one orientation. Insert the module at an angle of approximately 30 degrees into the empty memory socket. Then press it firmly so that the contact edge is driven fully into the receiving socket.

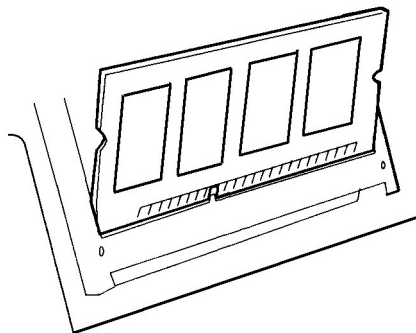


Figure 31: Installing a Memory Module

- 8 Pivot the module until the latches on both sides of the socket snap into place. (You will feel it solidly click into place.)
- 9 Replace the Memory Slot Cover and the Retaining Screw. You have now completed the memory upgrade.

Troubleshooting

An Initial Check List

Check out these items first:

- Check to see if the problem persists when all the external devices are removed.
- Check to see that the green light indicator on the AC adapter is lit.
- Check to see that the power cords are completely and firmly plugged to the wall outlet and to the ViewPad™ 1000.
- Check to see that the ViewPad 1000 power indicator is on.
- Check for any incorrect or loose cable connections. Make sure the latches on the connectors catch securely at their receptacles.
- If an external device such as a USB CD-ROM drive, scanner, or printer does not function correctly when connected, there might be a problem with the device. Consult the device's manufacturer first.
- Some software issues may be resolved by contacting the software vendor directly.
- Not all peripheral are plug-and-play. You may need to restart the system with these devices powered up and connected beforehand.
- Be sure to go to BIOS SETUP to load DEFAULT SETTING after any BIOS update.

Audio Problems

Speaker

No speaker output:

- The Audio-output may have been set to mute. Double-click the speaker icon in the task tray to see if the speaker has been muted.
- Most audio problems are software-related.
- Go to Start > Settings > Control Panel then double-click the Multimedia icon (or Sounds and Multimedia icon). In the Audio page, make sure that SiS7018 Wave is the preferred playback device.

Sound Recording

Sound can not be recorded:

- Check the Mute Setting - Double-click the speaker icon on the lower right corner of the task tray to see if the microphone might have been muted.
 - 1 Click Options and select Properties.
 - 2 Select Recording and click the OK button.
 - 3 After Clicking the OK button, the recording volume control panel will appear. Review the settings to make sure that the Mute option has not been selected.
- Check the Recording Device Selection - Go to Start > Settings > Control Panel then double-click the Multimedia icon (or Sounds and Multimedia icon). In the Audio page, make sure that SiS7018 Wave is the preferred recording device.

Hard Disk Problems

Spin

If hard disk drive does not spin it will may need to be serviced or replaced:

- Check the hard disk indicator LED to confirm a lack of spinning. Open a file. The LED lamp should light up momentarily as a file is accessed. If the file does not open and the light LED does not light, there may be a hard disk spin problem.
- Recall if your ViewPad™ 1000 has been subjected to static electricity or physical shock. If so, you may have damaged the disk drive.

Abnormal Sounds

The hard drive is making abnormal whining noises:

- You should back up your files as soon as possible.
- Make sure the source of noise is indeed from the hard drive, not the fan or some other device.

Drive is Full

The hard disk drive has reached its capacity:

- Archive files or programs that you no longer use by moving them to an alternate storage medium (floppy disk, optical recordable disk, tape, etc.) or uninstall programs that are no longer used.
- Many browsers store files on the hard drive as a cache to speed up the performance. Check the program's Online Help for instructions on decreasing the cache size or on removing temporary Internet files.
- Empty the Recycle Bin frequently to maintain the availability of usable disk space. When you move files to the Recycle Bin, Windows® does not actually delete them until you act to empty the bin. To delete the files in the Recycle Bin, double-click the desktop Recycle Bin icon > File > Empty Recycle Bin.

Drive is Slow

The hard disk takes longer to read a file:

- If you have been using the drive for a long time, the files may become fragmented. To correct potential file fragmentation, go to Start > Programs > Accessories > System Tools > Disk Defragmenter to perform a disk defragmentation.

File Corruption

A File(s) acts corrupted:

- Run the ScanDisk surface scan to check the disk. Go to Start > Programs > Accessories > System Tools > ScanDisk to perform a disk scan.

Display Problems

Blank Screen

The display panel remains blank when the system is turned on:

- Make sure the ViewPad™ 1000 is not in the power saving mode. In these modes, the display is turned off to conserve energy.

Screen is Difficult to Read

- The display resolution should be set to 800x600 for optimal viewing.

- 1 Go to Start > Settings > Control Panel and double-click on the Display icon.
- 2 Under the Settings page, click the Advanced icon.
- 3 Click the Display Modes page to set the resolution to 800x600. Choose at least 256 colors.

The Screen Flickers

- It is normal for the display to flicker a few times during powering up and shutting down operations.

Wireless Keyboard and Pointing Device Problems

Keyboard is Non-responsive

The wireless keyboard accepts no input:

- Check for some intervening object blocking infrared communication between the Keyboard and the ViewPad™ 1000.
- The ViewPad 1000 is designed to use only one keyboard at a time. If you are connecting an external keyboard to the system, the wireless keyboard may not work.
- Make sure that there are charged batteries installed in the keyboard.
- Try restarting the system.

Character Repetition

The characters on the screen repeat:

- You may be holding the keys down too long while you are typing.
- Keep the keyboard clean and free of dust and dirt.
- Configure the keyboard to wait longer before the auto repeat feature starts. To adjust this feature, Go to Start > Settings > Control Panel, then double-click on the Keyboard icon. A dialogue box opens adjustable settings for the keyboard.

Bios Problems

CMOS Checksum Failure Message

A message, CMOS Checksum Failure, displays during the booting process:

- If the CMOS Checksum Failure message appears during the booting procedure, it may indicate failure of the CMOS battery. If so, you will need

to replace the battery. Contact ViewSonic® technical service to assist you with this process.

- The CMOS battery normally lasts one to two years in continuous operation. However, depending on actual usage, the battery might last three to five years.

Infrared Problems

Port Failure

The Infrared Communication Port does not seem to work:

- Remove any objects that block the communications path.
- Make sure the communicating devices are not more than 1 meter apart and are aligned in a straight-line.
- Make sure that IR device is enabled in the Control Panel. If the infrared icon at the lower right corner of the task tray has a red X-symbol, it has been disabled. Click on the icon. In the Option page check off the Infrared Communication item.
- Check the infrared setting in the BIOS Setup utility.

Memory Problems

Increased Memory is not Recognized

The boot up screen does not show additional memory installed:

- Certain brands of memory module may not be compatible with your system. Go to www.ViewSonic.com for a list of compatible SODIMM.
- The memory module may not have been installed properly. Go back to the memory section to review the details of this operation.
- The memory module may be defective.

Insufficient Memory Error Message

The O/S issues an insufficient memory error message during operation:

- This is often a software or Windows®-related problem.
- Close any application programs you're not using. This may free up some allocated memory.
- You may need to install an additional memory module. For instructions, go to the section on upgrading memory.

Modem Problems

Connection Difficulties

- Be sure to disable Call Waiting.
- Excessive line noise might cause the connection to be dropped. To check line noise, put the regular phone handset on the line and place a phone call. If you do hear abnormal noise, try to make the modem connection with a different line or contact your local telephone company for service.
- Make sure the RJ-11 cable (the one that goes from the modem to the telephone line) is firmly connected to the modem's RJ-11 jack and to the telephone line socket.
- Try a different phone line to see if the problem persists.
- Be sure the line has a dial tone.

Network Adapter Problems

Adapter Nonresponsive

The Ethernet Adapter does not seem to work:

- Go to Start > Settings > Control Panel then double-click the System icon. Select the Device Manager tab from the System Properties. Double-click on Network Adapters and check if SiS900 PCI Fast Ethernet Adapter appears as one of the adapters. If it does not exist, Windows® has not detected the SiS adapter or the device driver has not been installed. If there is a yellow mark or red cross on the SiS network adapter, there may be a device or resource conflict. Consult Windows® manual on how to solve this problem.
- Make sure the physical connections on both ends of the cable are good.
- The hub or concentrator may not be working properly. Check to see if other workstations connected to the same hub or concentrator are working.

100-Mbps Mode Nonresponsive

The Ethernet adapter does not appear to operate in the 100-Mbps transmission mode:

- Make sure the hub you are using supports 100-Mbps operation.
- Make sure that your RJ-45 cable meets the 100BASE-T requirements.
- Make sure the Ethernet cable is connected to the hub socket that supports 100BASE-T mode, not 10BASE-T. The hub may have both 10BASE-T and 100BASE-T sockets.

PC Card (PCMCIA) Problems

PC Cards do not Function

- Make sure you have properly installed the driver for the card.
- Make sure the card is properly seated.
- Consult the card's manual or contact the vendor for troubleshooting.

PC Card not Recognized

- Remove and insert the PC Card again.
- Make sure there is no IRQ (interrupt request) conflict with the card. See Windows® on-line help for solving IRQ conflicts.
- Reboot the ViewPad™ 1000 to see if the problem persists.
- The card may be defective. Try the card on another system, if possible.

PC Card Removal Locks Up Windows®

Windows® Crashes or Freezes after removing the PC Card:

- Make sure the PC Card is not in use before removing it. Click on the PC Card icon at the lower right corner of the task tray and select the card you wish to stop. When you click OK. In a few seconds Windows® will prompt you to remove the card.

Performance Problems

Overheating

The ViewPad 1000 becomes hot:

- In a high temperature operating environment, 95 degrees Fahrenheit (35 degrees Celsius) or more, the ViewPad 1000's case bottom can reach 120 degrees Fahrenheit (49 degrees Celsius).
- Make sure the air vents are not blocked.
- If the fan does not seem to be working at high temperatures, contact ViewSonic® Customer Support at (800) 688-6688.
- Certain programs that are processor-intensive may increase the ViewPad 1000's temperature to the point that the ViewPad 1000 automatically slows down its CPU clock to protect itself from thermal damage.

Program Slowing

The program appears stopped or runs very slowly:

- Press CTRL+ALT+DEL then click on the Task Manager to see if the application is still responding.
- Restart the ViewPad™ 1000.
- This may be normal for Windows® when it is processing other CPU-intensive programs in the background.
- You may be running too many applications. Try to close some applications or increase available system memory for higher performance.
- The processor may have overheated due to the system's inability to regulate its internal heat. Make sure the ViewPad 1000's ventilation grills are not blocked.

Power, Start, and Battery Problems

Power Down on Startup

The ViewPad™ 1000 powers down as soon as it is powered on:

- Battery power may be extremely low. The circuitry prevents a complete power drain, which is not intended for Lithium Ion batteries. Use the power adapter to charge it for several hours before trying again.

Diminishing Battery Life

The battery life gets shorter and shorter:

- The battery has a finite life of about 500 charge cycles. If your battery is over one or two years old, it may be time to have it replaced.
- Try a higher power saving setting in the BIOS or in Windows® Power Management.

Recharge Failure

The battery does not charge:

- Make sure the AC adapter is plugged into a working power source.
- The battery charge indicator LED on the ViewPad 1000 should be lit when you plug in the AC adapter.
- Make sure the battery module is fully inserted in its bay and that the battery latch is in its locked position.
- If the battery is operating at a very high temperature, it may not accept a charge.

Printing Problems

File Print Failure

The printer does not print:

- Make sure the cable connection is secured and that the printer is powered up.
- Run the printer self-test to see if it reports any problem.
- Check to see if the printer displays any error messages. A paper jam may have occurred.
- Make sure you have installed the printer's driver.
- Try rebooting the system with the printer powered up and connected beforehand.
- Consult Windows® on-line help or your printer manual, or contact the printer vendor for assistance. Most printer problems using a parallel or serial port are software-related.

Screen Print Failure

The printer does not print what is on the screen:

- If the printer prints strange symbols, this can be the result of garbage in the printer memory buffer cache. Call off all the printer tasks then toggle off the printer power switch to clear up the memory buffer. Turn the printer back online and attempt to print again.
- Make sure you have installed the correct printer driver.

USB Problems

USB Failure

The USB device does not seem to work:

- Check the USB settings in the Windows® Control Panel.
- Make sure you have installed the necessary device drivers.
- Contact the device vendor for additional support.

Appendix

ViewPad 1000 Product Specifications

Processor and Core Logic

- Processor - Intel® Celeron® 800-MHz processor in μ -PGA package
- L1 Cache - 32 KB (16 KB for Code Instruction, 16 KB for Data) on-die
- L2 Cache - 128 KB on-die
- Core Logic - SiS630S chip-set with:
 - Graphics
 - Audio
 - Modem
 - Ethernet
- Bus Architecture - Controller integrated:
 - 100MHz Front Side Bus
 - AGP Bus

Storage Capacity

- Hard Disk Drive - 10GB storage capacity

System Memory

- Memory Type - Synchronous DRAM, PC100 or PC133 compatible
- Default - 128 Mb, 3.3-Volt 64-bit bus
- Memory Expansion - Total of Two 184-pin SODIMM sockets expandable to 512 MB)

Operating System

- Microsoft Windows 2000 Professional®

LCD

- Display Panel - 10.4-inch SVGA active-matrix touch-screen TFT display capable of up to 16.7 M colors

Graphics

- Graphic Controller - SiS630S with integrated AGP bus 2D/3D graphics accelerator

- Graphics Ability - UltraAGP architecture graphics capability (similar to 4X AGP), 3D Graphics Supported
- Playback - Motion Compression and IDCT Supported for DVD Playback
- Multimonitor Display:
 - Simultaneous LCD/External Monitor Display
 - Dual Independent LCD and External Monitor Display Supported
- Memory Sharing - Shared-memory architecture (up to 50% of the total system memory, 32 MB maximum)
- Other Features:
 - Direct3D® and DirectX® 6.0 compatible
 - VESA® DDC1, DDC2B & DDC 3.0 supported

LAN

- Network Adapter - SiS630S with integrated PCI Fast Ethernet function for 100BASE-T network standards.
- PnP Function - Windows® 95 / 98 / Me / 2000 Plug and Play compatible
- Flow Control
 - Automatic Jam
 - Auto Negotiation
- Speed Selection - Auto Negotiation and Parallel detection for automatic speed selection (IEEE 802.3u)
- Other Features:
 - High performance 32-bit PCI bus master architecture with integrated DMA controller for low CPU and bus utilization
 - Remote Wake-up Scheme support
 - Hot Insertion support

Wireless Lan

- Host Interface - Mini-PCI
- Channels - 11 for USA and Canada
- Frequency Band - 2.400 - 2.4835GHz (subject to local regulations)
- Data Rates
 - 11 Mbps
 - 5.5 Mbps
 - 1 Mbps
- Transmission Power - Output range 2.7 - 3.0V at 14 dBm, minimum
 - Nominal Temp Range:
 - 17 dBm, minimum
 - Extended Temp Range:
 - 14 dBm, minimum
- Reception Sensitivity

Nominal Temperature Range:

- 1 Mbps 10-5 BER @ -90 dBm, minimum
- 5.5 Mbps 10-5 BER @ -87 dBm, minimum
- 11 Mbps 10-5 BER @ -84 dBm, minimum

Extended Temperature Range

- 1 Mbps 10-5 BER @ -84 dBm, minimum
- 5.5 Mbps 10-5 BER @ -81 dBm, minimum
- 11 Mbps 10-5 BER @ -78 dBm, minimum

- Modulation

- CCK - 11 Mbps and 5.5 Mbps
- DQPSK - 2 Mbps
- DBPSK - 1 Mbps

- Security - 40-bit WEP Encryption

- Standards - IEEE 802.11b, Wi-Fi compliant

- Roaming:

Full mobility and seamless roaming from cell to cell and across access points (subject to access point)

- Network Protocols:

- TCP/IP
- IPX
- NDIS3
- NDIS4

- Management Utility - Link Config for network join and diagnostics

Modem

- Chipset - SiS630S with Modem Controller integrated

- Transmission Speed:

V.90 / K56 flex for download data speeds up to 56000bps
V.34, V.17, V.29 protocol support

Audio

- Audio Chipset - SiS630S with integrated audio controller

- Sound Capability

64-voice Polyphony Wavetable Synthesizer
DirectSound 3D® accelerator for IID
IAD and Doppler effects
Full duplex, independent sample rate converter
SoundBlaster® Pro/16 compatibility
AC'97 V2.1 compatibility
Full duplex and independent sample rate converter for audio recording and playback

Ports

- VGA - One 15-pin CRT connector
- Audio - One stereo audio-out jack & one microphone-in jack
- Infrared - One FIR LED and One CIR-type LED for keyboard
- USB - Two USB connectors
- Modem - One standard phone jack (RJ-11)
- LAN - One standard network connector (RJ-45)
- Power - One DC-in connector
- Docking - One docking connector for docking station

Other Standard Hardware

- Keyboard - Infrared-transmitting (CIR type) 87-key touch-type QWERTY keyboard with embedded numeric keypad
- Pointing Device - 4-wire resistive type Touch Screen
- Digital Camera:
 - CCD, 640x480 resolution
 - Manual focus ring
 - Macro lens support
 - USB1.0 interface

PC Card Slot

- PCMCIA Controller - O2Micro OZ 6812 / 6912 controller
- Features - Single slot for TYPE I/II
- Hot insertion and removal support

Power

- Main Battery:
 - Li-Ion 9-cell, 11.1V
 - 5400mAh
 - 60W
- AC Adapter:
 - Input:
 - 100-240V
 - 50-60Hz
 - 1.7A Max @ 115V
 - Output:
 - 16V, 3.75A
 - 60W
- Recharge:
 - System OFF - 3.7-4.2 HR (100%)

- System ON - 6-6.5 HR (100%)
- Other Features - capabilities:
 - Low Battery Warning
 - Suspend/Resume

BIOS

- PnP Function - AMI PnP BIOS
- Self Test - Power On Self Test
- Auto Detection:
 - DRAM type auto-detection
 - Auto-sizing, L2 Cache type auto-detection
 - Hard disk type auto-detection
- Power Management:
 - APM 1.2 (Advanced Power Management)
 - ACPI 1.0 (Advanced Configuration Power Interface)
- Security - Two Level Password Protection
- Other Features:
 - 32bit access
 - Ultra DMA
 - PIO5 Mode support
 - Multi-boot capability

Physical Specifications

- Dimensions - L x W x D:
 - 310.5mm x 226.7mm x 36.2mm
 - 12.2" x 8.9" x 1.4"
- Weight:
 - 1.95 kg
 - 4.3lbs
- Environmental Limitations:
 - Operating Temperature:
 - 41 to 95 degrees Fahrenheit
 - 5 to 35 degrees Celsius
 - Operating Humidity - 20 to 90 percent RH at:
 - 41 to 95 degrees Fahrenheit
 - 5 to 35 degrees Celsius
 - Storage Temperature:
 - 4 to 122 degrees Fahrenheit
 - 20 to 50 degrees Celsius

Note: Product Specifications are subject to change without notice.

Optional ViewPad Dock

- PnP Function - Hot insertion support
- Ports:
 - One 15-pin CRT connector
 - One stereo Audio-out jack & one Microphone-in jack
 - One 25-pin Parallel connector (ECP / EPP)
 - One 9-pin Serial connector
 - Two USB connectors
 - One 56bps Modem jack (RJ-11)
 - One Fast Ethernet connector (RJ-45)
 - One DC-in connector
 - One docking connector for the ViewPad™ 1000
- Button - One Eject button for system removal
- LED Indicators:
 - One AC-in Green LED indicator
 - One Ready-to-Remove Orange LED indicator

Customer Support

For the nearest ViewSonic® service provider, see the table below or contact your reseller.

You will need to have the product's serial number on-hand before placing a call.

Country/ Region	Website	T = Telephone F = FAX	E-mail
United States	viewsonic.com/ support	T: (800) 688-6688 F: (909) 468-1202	viewpadsupport@ viewsonic.com
Canada	viewsonic.com/ support	T: (800) 688-6688 F: (909) 468-1202	service.ca@ viewsonic.com
United Kingdom	viewsoniceurope.com	T: 0800 833 648 F: (01293) 643910	service.eu@ viewsoniceurope.com
Europe, Middle East, Baltic coun- tries, and North Africa	viewsoniceurope.com	Contact your reseller	service.eu@ viewsoniceurope.com
Australia and New Zealand	viewsonic.com.au	T: +61 2 9929 3955 F: +61 2 9929 8393	service.au@ viewsonic.com
Singapore/South- east Asia	viewsonic.com.sg	T: 65 2734018 F: 65 2731566	service.sg@ viewsonic.com
Other Asia/Pacific countries and Indian Peninsula	viewsonic.com.tw	T: 886 2 2246 3456 F: 886 2 8242 3668	service.ap@ viewsonic.com
South Africa	viewsonic.com/asia	T: 886 2 2246 3456 F: 886 2 8242 3668	service.ap@ viewsonic.com

Cleaning and Maintenance

- Make sure the ViewPad™ 1000 is turned off.
- Never spray or pour any liquid directly onto the screen or case.
- Never immerse the ViewPad 1000 in any liquid.

To clean the screen:

- 1** Wipe the screen with a clean, soft, lint-free cloth. This removes dust and other particles.
- 2** If still not clean, apply a small amount of non-ammonia, non-alcohol based glass cleaner onto a clean, soft, lint-free cloth, and wipe the screen.

To clean the case:

- 1** Use a soft, dry cloth.
- 2** If still not clean, apply a small amount of a non-ammonia, non-alcohol based, mild non-abrasive detergent onto a clean, soft, lint-free cloth, then wipe the surface.

DISCLAIMER

ViewSonic® does not recommend the use of any ammonia or alcohol-based cleaners on the ViewPad 1000 screen or case. Some chemical cleaners have been reported to damage the screen and/or case of the ViewPad 1000. ViewSonic will not be liable for damage resulting from use of any ammonia or alcohol-based cleaners.

Limited Warranty

ViewPad™ Products

What the warranty covers:

ViewSonic® warrants its ViewPad products to be free from defects in material and workmanship during the warranty period. If a ViewPad product proves to be defective in material or workmanship during the warranty period, ViewSonic will, at its sole option, repair or replace the product with a like product. Replacement product or parts may include remanufactured or refurbished parts or components. ViewSonic provides no warranty for the third party software included with the product. For specific warranty information, please see the EULAs included with the product. ViewSonic does not warrant that software will meet your requirements or that operation of software will be uninterrupted or error free. VIEWSONIC AND ITS SUPPLIERS DISCLAIM ALL WARRANTIES AND CONDITIONS, EITHER EXPRESS OR IMPLIED, INCLUDING, BUT NOT LIMITED TO, IMPLIED WARRANTIES OF MERCHANTABILITY, FITNESS FOR A PARTICULAR PURPOSE, AND NONINFRINGEMENT.

How long the warranty is effective:

ViewSonic ViewPads are warranted for one (1) year for all parts (except software) and one (1) year for all labor from the date of the first consumer purchase.

Who the warranty protects:

This warranty is valid only for the first consumer purchaser.

What the warranty does not cover:

1. Software
2. Any product on which the serial number has been defaced, modified or removed.
3. Damage, deterioration or malfunction resulting from:
 - a. Accident, misuse, neglect, fire, water, lightning, or other acts of nature, unauthorized product modification, or failure to follow instructions supplied with the product.
 - b. Repair or attempted repair by anyone not authorized by ViewSonic.
 - c. Damage to or loss of any programs, data or removable storage media.
 - d. Software or data loss occurring during repair or replacement.
 - e. Any damage of the product due to shipment.
 - f. Removal or installation of the product.
 - g. Causes external to the product, such as electrical power fluctuations or failure.
 - h. Use of supplies or parts not meeting ViewSonic's specifications.
 - i. Normal wear and tear.
 - j. Any other cause which does not relate to a product defect.
4. Removal, installation, and set-up service charges.

How to get service:

1. For information about receiving service under warranty, contact ViewSonic Customer Support. You will need to provide your product's serial number.
2. To obtain service under warranty, you will be required to provide (a) the original dated sales slip, (b) your name, (c) your address, (d) a description of the problem, and (e) the serial number of the product.
3. Take or ship the product freight prepaid in the original container to an authorized ViewSonic service center or ViewSonic.
4. For additional information or the name of the nearest ViewSonic service center, contact ViewSonic.

Limitation of implied warranties:

THERE ARE NO WARRANTIES, EXPRESS OR IMPLIED, WHICH EXTEND BEYOND THE DESCRIPTION CONTAINED HEREIN INCLUDING THE IMPLIED WARRANTY OF MERCHANTABILITY AND FITNESS FOR A PARTICULAR PURPOSE.

Exclusion of damages:

VIEWSONIC'S LIABILITY IS LIMITED TO THE COST OF REPAIR OR REPLACEMENT OF THE PRODUCT. VIEWSONIC SHALL NOT BE LIABLE FOR:

1. DAMAGE TO OTHER PROPERTY CAUSED BY ANY DEFECTS IN THE PRODUCT, DAMAGES BASED UPON INCONVENIENCE, LOSS OF USE OF THE PRODUCT, LOSS OF DATA, LOSS OF TIME, LOSS OF PROFITS, LOSS OF BUSINESS OPPORTUNITY, LOSS OF GOODWILL, INTERFERENCE WITH BUSINESS RELATIONSHIPS, OR OTHER COMMERCIAL LOSS, EVEN IF ADVISED OF THE POSSIBILITY OF SUCH DAMAGES.
2. ANY OTHER DAMAGES, WHETHER INCIDENTAL, CONSEQUENTIAL OR OTHERWISE.
3. ANY CLAIM AGAINST THE CUSTOMER BY ANY OTHER PARTY.

Effect of state law:

This warranty gives you specific legal rights, and you may also have other rights which vary from state to state. Some states do not allow limitations on implied warranties and/or do not allow the exclusion of incidental or consequential damages, so the above limitations and exclusions may not apply to you.

Sales outside the U.S.A. and Canada:

For warranty information and service on ViewSonic products sold outside of the U.S.A. and Canada, contact ViewSonic or your local ViewSonic dealer.

ViewSonic ViewPad Warranty (V2.0)

Release Date: 10-15-01

Safety Guidelines

CAUTION: The socket-outlet should be installed near the equipment and be easily accessible.

CAUTION: Use a power cable that is properly grounded. Always use the appropriate AC cord that is certified for the individual country. Some examples are listed below:

USA..... UL	Switzerland SEV
Canada..... CSA	Britain BASE/BS
Germany..... VDE	Japan Electric Appliance Control Act

IMPORTANT NOTICE CONCERNING POWER CORD SELECTION

The power cord set for this unit has been enclosed and has been selected according to the country of destination and must be used to prevent electric shock.



For the United States and Canada

In the United States and Canada the male plug is NEMA5-15 style (shown above), UL Listed, and CSA Labeled. For units which are mounted on a desk or table, type SVT or SJT cord sets may be used. For units which sit on the floor, only SJT type cord sets may be used. The cord set must be selected according to the current rating for your unit. Please consult the table below for the selection criteria for power cords used in the United States and Canada.

Cord Type	Size of Conductors in Cord	Maximum Current Rating of Unit
SJT	18 AWG	10 Amps
	16 AWG	12 Amps
	14 AWG	12 Amps
SVT	18 AWG	10 Amps
	17 AWG	12 Amps

For European Countries

In Europe you must use a cord set which is appropriate for the receptacles in your country. The cord set is HAR-Certified, and a special mark that will appear on the outer sheath, or on the insulation of one of the inner conductors.

AC PLUG CORD PRECAUTIONS FOR THE UNITED KINGDOM

FOR YOUR SAFETY PLEASE READ THE FOLLOWING TEXT CAREFULLY.

IF THE FITTED MOULDED PLUG IS UNSUITABLE FOR THE SOCKET OUTLET THEN THE PLUG SHOULD BE CUT OFF AND DISPOSED OF SAFELY.

THERE IS A DANGER OF SEVERE ELECTRICAL SHOCK IF THE CUT OFF PLUG IS INSERTED INTO AN APPROPRIATE SOCKET.

If a new plug is to be fitted, please observe the wiring code as shown below.

If in any doubt, please consult a qualified electrician.

WARNING: THIS APPLIANCE MUST BE EARTHED.

IMPORTANT: The wires in this mains lead are coloured in accordance with the following code:

- Green-and-Yellow: Earth
- Blue: Neutral
- Brown: Live

If the coloured wires of the mains lead of this appliance do not correspond with the coloured markings identifying the terminals in your plug, proceed as follows:

The wire which is coloured GREEN-AND-YELLOW must be connected to the terminal in the plug which is marked by the letter E or by the Earth symbol or coloured GREEN or GREEN-AND-YELLOW.

The wire which is coloured BLUE must be connected to the terminal in the plug which is marked with the letter N or coloured BLACK. The wire which is coloured BROWN must be connected to the terminal in the plug which is marked with the letter L or coloured RED.

If you have any questions concerning which proper power cord to use, please consult with the dealer from whom you have purchased the product.

Compliance Information

Federal Communications Commission Notice

This equipment has been tested and found to comply with the limits for a Class B digital device, pursuant to Part 15 of the FCC Rules. These limits are designed to provide reasonable protection against harmful interference in a residential installation. This equipment generates, uses, and can radiate radio frequency energy and, if not installed and used in accordance with the instructions, may cause harmful interference to radio communications. However, there is no guarantee that interference will not occur in a particular installation. If this equipment does cause harmful interference to radio or television reception, which can be determined by turning the equipment off and on, the user is encouraged to try to correct the interference by one or more of the following measures:

- Reorient or relocate the receiving antenna.
- Increase the separation between the equipment and the receiver.
- Connect the equipment into an outlet on a circuit different from that to which the receiver is connected.
- Consult the dealer or an experienced radio or television technician for help.

Modifications

The FCC requires the user to be notified that any changes or modifications made to this device that are not expressly approved by the Manufacturer may void the user's authority to operate the equipment.

Connections to Peripheral Devices

Connections to this device must be made with shielded cables with metallic RFI/EMI connector hoods to maintain compliance with FCC Rules and Regulations.

Declaration of Conformity

This device complies with Part 15 of the FCC Rules. Operation is subject to the following two conditions: (1) this device may not cause harmful interference, and (2) this device must accept any interference received, including interference that may cause undesired operation.

European Notice

Products with the CE Marking comply with both the EMC Directive (89/336/EEC) and the Low Voltage Directive (73/23/EEC) issued by the Commission of the European Community.

Compliance with these directives implies conformity to the following European Norms:

- EN55022 (CISPR 22) Radio Frequency Interference
- EN50082 (IEC801-2, IEC801-3, IEC801-4) Electro-magnetic Immunity
- EN60950 (IEC950) Product Safety

Canadian Notice

This digital apparatus does not exceed the Class B limits for radio noise emissions from digital apparatus as set out in the radio interference regulations of the Canadian Department of Communications.

Le présent appareil numérique n'emette pas de bruits radioélectriques dépassant les limites applicables aux appareils numériques de Classe B prescrites dans le règlement sur le brouillage radioélectrique édicté par le Ministère des Communications du Canada.

Power Cord Requirement

The power cord supplied with the ViewPad™ 1000 AC adapter should match the plug and voltage requirements for your local area. Regulatory approval for the AC adapter has been obtained using the power cord for the local area. However, if you travel to a different area and need to connect to a different outlet or voltage, you should use one of the power cords listed below. To purchase a power cord (including one for a country not listed below) or a replacement ac adapter, contact your local dealer.

U.S. and Canada

- The cord set must be UL-Listed and CSA-Certified.
- The minimum specifications for the flexible cord are (1) No. 18 AWG, (2) Type SJ, and (3) 3-conductor.
- The cord set must have a rated current capacity of at least 10 A.
- The attachment plug must be an earth-grounding type with a NEMA 5-15P (15A, 125V) or NEMA 6-15P (15 A, 250V) configuration.

Japan

- All components of the cord set (cord, connector, and plug) must bear a 'T' mark and registration number in accordance with the Japanese Dentori Law.
- The minimum specification for the flexible cord are: (1) 0.75 mm² conductors, (2) Type VCT or VCTF, and (3) 3-conductor.
- The cord set must have minimum rated current capacity of 7 A.
- The attachment plug must be a two-pole, grounded type with a Japanese Industrial Standard C8303 (15 A, 125 VAC) configuration.

Other Countries

- The cord set fittings must bear the certification mark of the agency responsible for evaluation in a specific country. Acceptable agencies are:
 - BSI (UK)
 - OVE (Australia)
 - CEBEC (Belgium)
 - SEMKO (Sweden)
 - DEMKO (Denmark)
 - SETI (Finland)
 - EANSW (Australia)
 - SEV (Switzerland)
 - IMQ (Italy)
 - UTE (France)
 - KEMA (The Netherlands)
 - VDE (Germany)
 - NEMKO (Norway)
- The flexible cord must be of a HAR (harmonized) type HO5VV-F 3-conductor cord with a minimum conductor size of 0.03 square inches.
- The cord set must have a current capacity of at least 10 A and a nominal voltage rating of 125 / 250 VAC.

Battery Safety

- The battery pack is intended to use only with this ViewPad™ 1000.
- Do not disassemble the pack.
- Do not dispose of the battery pack in fire or water.
- To avoid risk of fire, burns, or damage to your battery pack, do not allow a metal object to touch the battery contacts.
- Handle a damaged or leaking battery with extreme care. If you come in contact with the electrolyte, wash the exposed area with soap and water. If it contacts the eye, flush the eye with water for 15 minutes and seek medical attention.
- Do not charge the battery pack if the ambient temperature exceeds 113 degrees Fahrenheit (45 degrees Celsius).
- To obtain a replacement battery, contact your local dealer.
- Do not expose the battery pack to high storage temperatures (above 140 degrees Fahrenheit, 60 degrees Celsius).
- When discarding a battery pack, contact your local waste disposal provider regarding local restrictions on the disposal or recycling of batteries.

WARNING: There is a danger of explosion if battery is incorrectly replaced. Replace only with same or equivalent type recommended by the manufacturer. Discard used batteries according to the manufacturer's instructions or local laws.

**WARNING: MODEL N241S1 FOR USE WITH POWER SUPPLY
MODEL LSE9802A2060 / LSE9901A2070**

**ATTENTION: MODEL N241S1, POUR UTILISER AVEC LE
MODELE LSE9802A2060 / LSE9901A2070**

LED (Infrared) Safety

The infrared port located on the left side of this ViewPad™ 1000 is classified as a Class 1 LED (light-emitting diode) device according to International Standard IEC 825-1 (EN60825-1). This device is not considered harmful, but the following precautions are recommended:

- Do not attempt to view the infrared LED beam with any type of optical device.
- Do not attempt to make any adjustment of the unit.
- If the unit requires service, contact an authorized service center.
- Avoid direct eye exposure to the infrared LED beam. Be aware that the beam is invisible light and cannot be seen.

Lithium Battery Warning

This computer contains a lithium battery to power the clock and calendar circuitry.

Warning: Danger of explosion if battery is replaced incorrectly. Replace only with the same or equivalent type recommended by the manufacturer. Discard used batteries according to the manufacturer's instructions.

ViewSonic Corporation