

ViewSonic®

ViewPad™ 100 *SuperPDA*



User Guide

Contents

Table of Figures

Figures	vii
---------------	-----

Introduction

Your ViewPad 100 Super PDA	2
Precautions	2

ViewPad 100 Features

Software Included	3
Accessories	3

Basic Setup

Connecting the ViewPad 100	4
AC/DC Power Converter	4
Left Side Connections	5
Top Connections	5
On/Suspend Mode	5
Suspend	5
Right Side Connections	6
Back Connections	6
Front Control Buttons and Features	7
USB Synchronization Cable	7
Mini-VGA to VGA Cable	8
Battery	8
Changing Batteries	9
Power Properties	9

Using the ViewPad 100

ViewPad Buttons	10
Jog Dial	10
Using the Stylus	11
Moving Windows	11
Operating System not Responding	11
Calibrating the Touch Screen	11
Adjusting Stylus Double-tap Rate	11
Soft Reset	12
Hard Reset	13

Launch Dial	14
Launch Dial Settings	14
Host PC Data Synchronization	15
Overview	15
Installing the Synchronization Software	15
Resetting the Connection	17
Using the Connection	18
Display Properties	19
Password	19
PCMCIA and CompactFlash Cards	20
Using PCMCIA Card	20
Using CompactFlash Card	20
Internet or Local Area Network	21
Establishing a Dial-up Connection	21
Establishing a Wired or Wireless Network Connection	21
Using the Browser	21
Setting up Your E-mail	22
Accessing your E-mail	22
The ViewPad 100 Software Suite	23
Control Panel	23
CalliGrapher Handwriting Recognition Software	24
Windows Explorer	25
Task Manager	25
Pocket On-Schedule	25
MP3 Player	26
Voice Recorder	27
Picture Viewer	28
Primer	28
PTab	28
Microsoft Pocket Word	29
Microsoft Internet Explorer	29
bSquare Messenger	29
Pocket MBA-Calc	29
Citrix ICA Client	30
Microsoft RDP 5.0	30
Jeode JVM (Java Virtual Machine)	30
ClearVue Presentation Viewer	31
JETCET PRINT	33

ViewPad Options and Accessories

ViewPad Cradle	34
External Keyboard	35

Setting up the PC/keyboard Connection	35
External Mouse	35
External Speakers	35
External Microphone	36
External Display	36

Appendix

ViewPad 100 Specifications	37
Customer Support	40
Cleaning and Maintenance	41
Limited Warranty	42
Safety Guidelines	43
Compliance Information	44

Figures

Figure 1	AC/DC Power Converter	4
Figure 2	Left Side Connections	5
Figure 3	Top Connections	5
Figure 4	Right Side Connections	6
Figure 5	Back of ViewPad 100	6
Figure 6	Front of ViewPad 100	7
Figure 7	USB Synchronization Cable	7
Figure 8	Mini-VGA Cable	8
Figure 9	Unlock Battery Compartment	9
Figure 10	Front Buttons	10
Figure 11	Stylus	12
Figure 12	Reset Button	12
Figure 13	Hard Restart	13
Figure 14	The Launch Dial Window	14
Figure 15	The USB Synchronization Cable Connection	16
Figure 16	The Infrared Connection	17
Figure 17	The USB Synchronization Cable Connection	18
Figure 18	PCMCIA Card	20
Figure 19	CompactFlash Card	20
Figure 20	MP3 Player	26
Figure 21	Voice Recorder	27
Figure 22	Picture Viewer	28
Figure 23	Cradle Ports	34
Figure 24	External Keyboard	35

Copyright © ViewSonic Corporation, 2001. All rights reserved.

ViewPad is a trademark of ViewSonic Corporation. ViewSonic, and the three birds logo are registered trademarks of ViewSonic Corporation.

Microsoft, Windows, Windows CE, Windows CE Inbox, Explorer and Internet Explorer, Pocket Word, Microsoft Word, Active Sync, MSN Messenger, Excel, Windows RDP and the Windows logo are trademarks of Microsoft Corporation in the United States and other countries.

Citrix, WindView, and ICA are registered trademarks of Citrix Systems, Inc. MetaFrame is a trademark of Citrix Systems, Inc.

CalliGrapher® & PenOffice® Software. Copyright©1997-2001 Paragraph.

Intel and Celeron are registered trademarks of Intel Corporation

VESA is a registered trademark of the Video Electronics Standards Association.

CompactFlash is a trademark of the CompactFlash Association.

bSquare Messenger is a trademark of BSQUARE Corporation.

Java is a trademark of Sun Microsystems.

Westtek and WT logo are registered trademarks of Westtek, L. L. C. Jetcet and ClearVue are trademarks of Westtek, L. L. C.

ENERGY STAR® is a registered trademark of the U.S. Environmental Protection Agency (EPA).

As an ENERGY STAR® partner, ViewSonic Corporation has determined that this product meets the ENERGY STAR® guidelines for energy efficiency.

Disclaimer: ViewSonic Corporation shall not be liable for technical or editorial errors or omissions contained herein; nor for incidental or consequential damages resulting from furnishing this material, or the performance or use of this product.

In the interest of continuing product improvement, ViewSonic Corporation reserves the right to change product specifications without notice. Information in this document may change without notice.

No part of this document may be copied, reproduced, or transmitted by any means, for any purpose without prior written permission from ViewSonic Corporation.

Product Registration

To meet your future needs, and to receive any additional product information as it becomes available, please register your product on the Internet at: www.viewsonic.com. The ViewSonic Wizard CD-ROM also provides an opportunity for you to print the registration form, which you may mail or fax to ViewSonic.

For Your Records

Product Name:	ViewPad 100
Model Number:	VSMW22952-1M
Document Number:	ViewPad 100-1_UG_270 (Rev. 1B)
Serial Number:	_____
Purchase Date:	_____

Product disposal at end of product life

ViewSonic is concerned about the preservation of our environment. Please dispose of this product properly at the end of its useful life. Your local waste disposal company may provide information about proper disposal.

Introduction

Your ViewPad 100 Super PDA

Congratulations on your purchase of a ViewSonic® ViewPad™ 100 SuperPDA. With your ViewPad 100 you will be able to organize and access important business and personal information. In addition, you will be able to send and receive e-mail and access the Internet through the use of an optional modem or LAN card.

This user guide will help you set-up your ViewPad 100 and introduce you to its many features.

Important! Save the original box and all packing material for future shipping needs.

Your ViewPad 100 package includes:

- ViewPad 100
- Quick Start Guide
- ViewPad battery pack
- AC/DC power adapter
- Power cord
- Two (2) Styli
- USB synchronization cable
- Mini-VGA adapter
- Case sleeve (which folds into a stand)
- ViewSonic Wizard CD-ROM which includes User Guide and applications documentation
- Microsoft ActiveSync® CD-ROM

Precautions

- For best viewing conditions view the screen from a distance of 15" to 18"
 - **DON'T TOUCH THE SCREEN WITH YOUR FINGERS.** Oils from the skin are difficult to remove.
 - **NEVER REMOVE THE REAR COVER.** Your ViewPad 100 contains high voltage parts. You may suffer serious injury if you touch these parts.
 - Avoid exposing the screen to direct sunlight or another heat source. The screen should be facing away from direct sunlight to reduce glare.
 - Always handle your ViewPad 100 with care; dropping your ViewPad 100 could void the warranty.
 - Do not operate your ViewPad 100 outside in a wet, damp or extremely cold environment.
 - Do not place heavy objects on the screen, video cable, or power cord.
 - If smoke, abnormal noise, or strange odor is present, immediately switch the ViewPad 100 off and call your dealer or ViewSonic.
 - Use only the AC/DC power adapter supplied with your ViewPad 100
-

ViewPad 100 Features

Software Included

- bSquare Messenger®
- CalliGrapher® Handwriting Recognition
- Citrix® ICA® Client 6.0
- ClearVue™ Presentation Viewer®
- Display Utility
- Jeode™ Java Virtual Machine®
- JETCET® PRINTER
- Launch Dial®
- MBA Calculator®
- MP3 Player®
- Microsoft Inbox®
- Microsoft Internet Explorer®
- Microsoft Pocket Word®
- Microsoft RDP® 5.0
- Microsoft Windows CE® 3.0 Operating System
- Picture Viewer®
- Pocket On-Schedule®
- Primer PDF Viewer®
- PTab® Spreadsheet Software
- Task Manager
- Voice Recorder

Accessories

Your ViewPad™ 100 SuperPDA offers expansion options through its USB port, PCMCIA (*Personal Computer Memory Card International Association*) slot and CompactFlash slot.

Refer to www.viewsonic.com for a list of compatible accessories.

Basic Setup

Connecting the ViewPad 100

Your ViewPad™ 100SuperPDA features powerful software and connectivity tools for you to create files, transfer information, send/receive e-mail, and explore the World Wide Web.

This section explains the ports, cables, connections and hardware to get you started. More details and connection options are explained in the next section *Using the ViewPad 100 on page 10*.

AC/DC Power Converter

You may operate your ViewPad 100 with AC power when available. Use AC power as shown in Figure 1 (below) to recharge the battery.

CAUTION: Use only the AC/DC power converter supplied with your ViewPad 100.



Figure 1: AC/DC Power Converter

For more information about the use of battery power see [Battery on page 8](#).

Left Side Connections

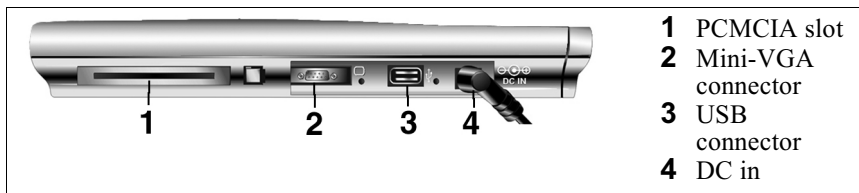


Figure 2: Left Side Connections

Top Connections

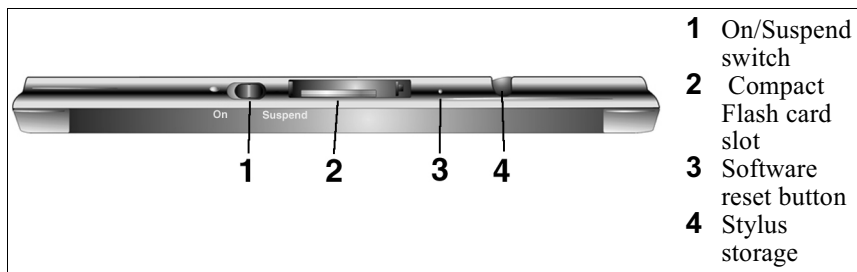


Figure 3: Top Connections

On/Suspend Mode

The On/Suspend switch is on the top of your *ViewPad™ 100 SuperPDA*.

- 1 Slide the switch to the **On** position to take your ViewPad 100 out of Deep Suspend Mode.
- 2 Slide the switch to the **Suspend** position to place your ViewPad 100 into Deep Suspend Mode.

Suspend

Suspend is a power-saving option. To place your ViewPad 100 into Suspend mode do the following:

- 1 Tap on Start.
- 2 Tap on Suspend.

NOTE: Deep Suspend Mode is a power saving function that shuts off the screen display and disables all control buttons on the ViewPad 100.

Right Side Connections

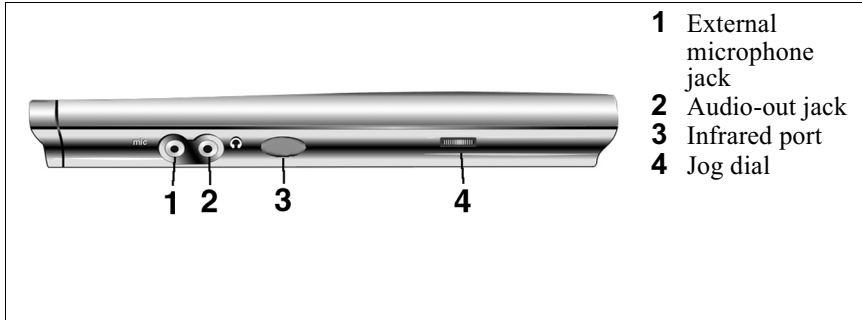


Figure 4: Right Side Connections

Back Connections

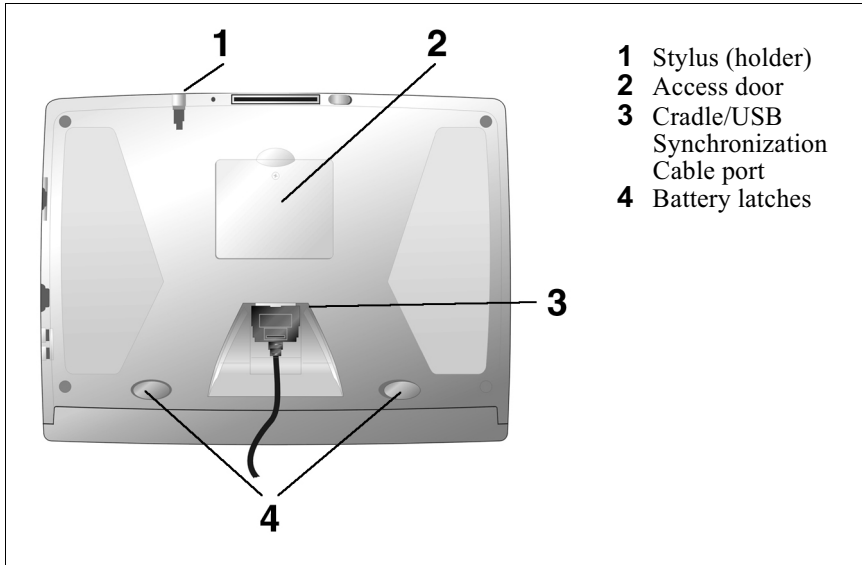


Figure 5: Back of ViewPad 100

Important: Do not connect the USB Synchronization Cable to your host PC until actually prompted to do so during the synchronization software installation process. (See Data Synchronization on page 16.)

Front Control Buttons and Features

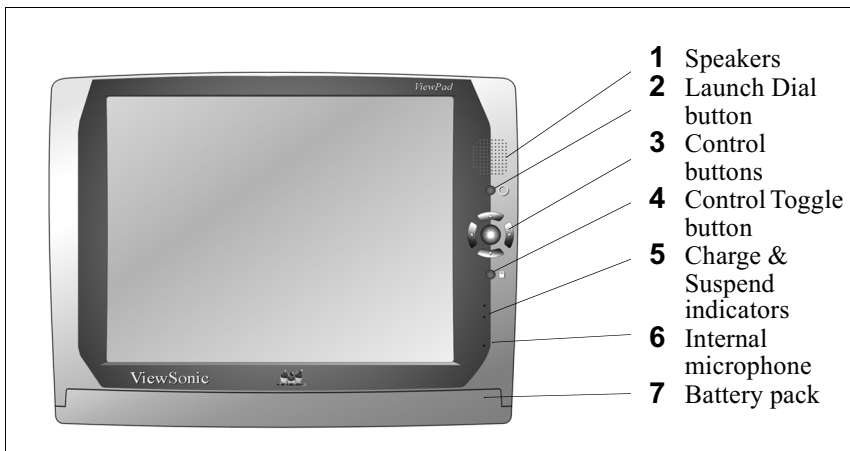


Figure 6: Front of ViewPad 100

USB Synchronization Cable

The USB Synchronization cable is used to connect your ViewPad™ 100 to a host PC for uploading and downloading files.

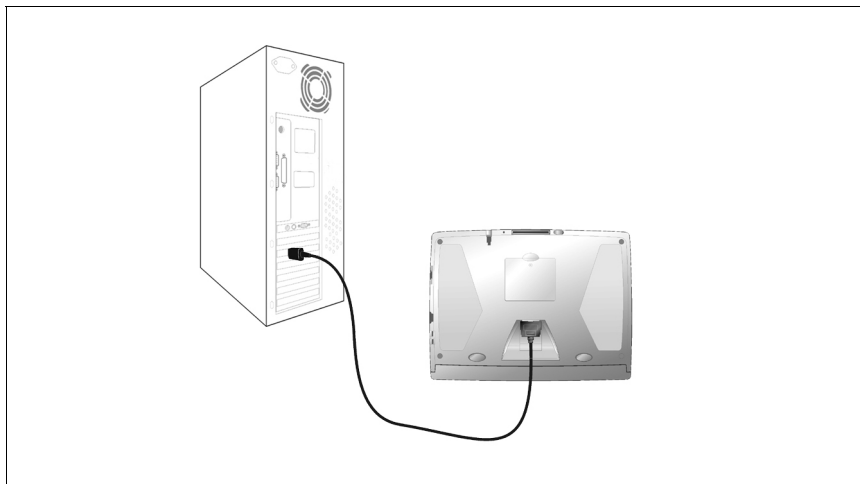


Figure 7: USB Synchronization Cable

Important: Do not connect the USB Synchronization Cable to your host PC until actually prompted to do so during the synchronization software installation process. (See Data Synchronization on page 16.)

Mini-VGA to VGA Cable

The Mini-VGA cable allows you to connect to a standard VGA cable connected to a monitor or display terminal.

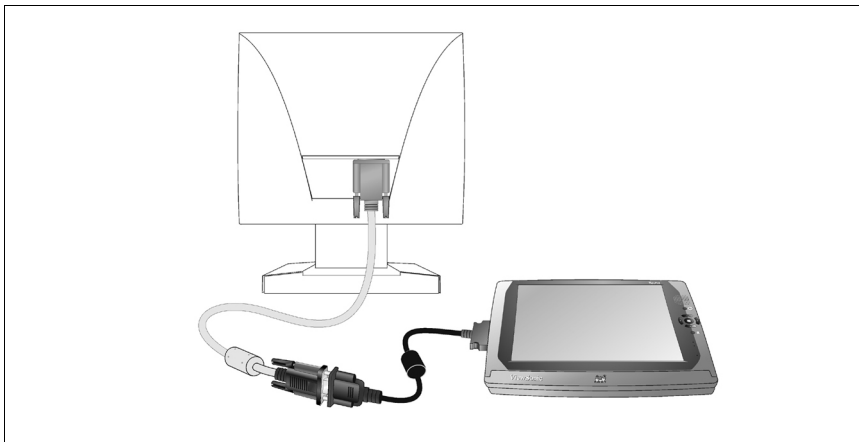


Figure 8: Mini-VGA Cable

Battery

Before using the *ViewPad™ 100 SuperPDA* for the first time, charge the battery for at least 14 hours.

Caution: Replace only with VSVPA23165-1M or a ViewSonic® extended battery pack.

Your ViewPad 100 has two power sources, AC (using the AC/DC converter) or battery. To run your ViewPad 100 from an AC outlet, use the supplied AC/DC adapter cable. *See Figure 1.*

A fully charged battery can last up to five (5) hours, extendable to ten (10) hours with the optional high capacity battery (sold separately). The use of optional CompactFlash or PC card accessories will affect battery life.

The battery is charging when the ViewPad 100 is connected to an AC outlet. The power indicator light is *green* and the charge light is *amber* while charging. It takes the ViewPad 100 approximately two (2) hours to charge while not in use and four (4) hours while in use.

When not connected to an AC outlet, the ViewPad 100 operates on battery power.

- **Fully Charged** – the *amber* indicator light is off
- **Low charge** – the *amber* indicator blinks when your battery has less than 6 percent remaining charge.

Changing Batteries

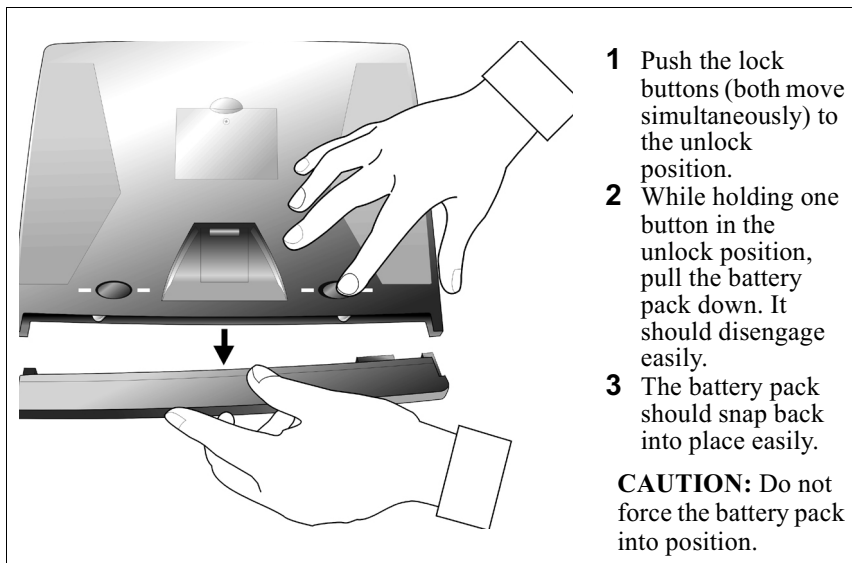


Figure 9: Unlock Battery Compartment

NOTE: When the Amber battery light is on, indicating that the battery has a charge of less than 6%, you are in danger of losing the contents of internal memory (RAM), even if the ViewPad™ 100 is not being used. When this low battery level is reached, you should recharge the battery.

Power Properties

The Power Properties enables you to see the status of the battery. In addition, you can conserve battery power by setting the *Power Off* parameters using the following steps:

- 1** Use the stylus and Tap Start.
- 2** Tap Settings.
- 3** Tap Control Panel.
- 4** Double-tap Power.

Battery shows battery properties. *Power Off* allows you to choose a setting. Select the period of inactivity after which the ViewPad 100 will go into *Suspend Mode*. The ViewPad 100 will go into suspend mode after the selected amount of time has passed if there has been no activity.

NOTE: While your ViewPad 100 is in suspend mode the battery power will continue to save the contents of RAM (internal memory).

Using the ViewPad 100

ViewPad Buttons

The buttons on the right side of your *ViewPad™ 100 SuperPDA* screen give you greater navigational control. The BCEF buttons function alternately as arrow keys or cursor control keys. The BCDEF buttons all reactivate the operating system if your ViewPad 100 is in the *suspend* mode.

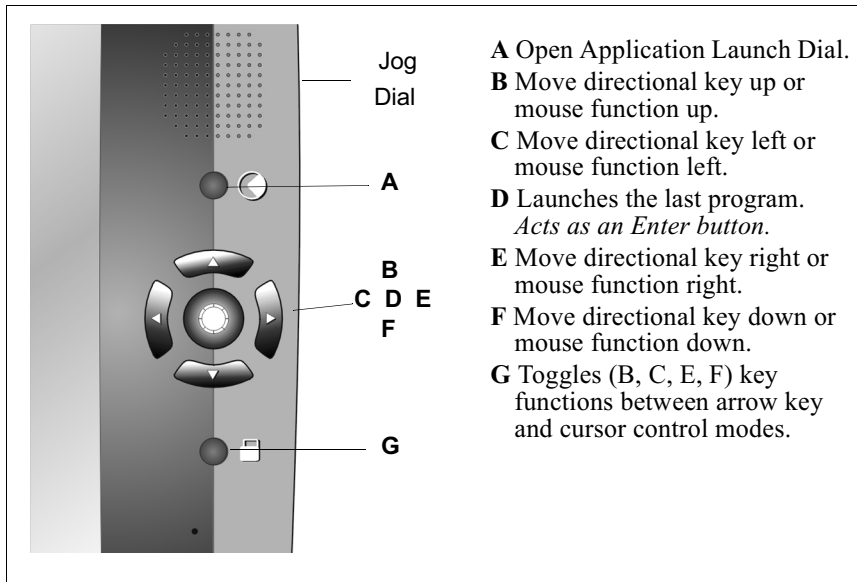


Figure 10: Front Buttons

Jog Dial

In addition to the button functions shown in Figure 10, your ViewPad 100 also has a Jog Dial (location is shown in the figure) which is useful for scrolling through multi-page documents. While you are viewing a document, rotate the dial up or down to scroll one page at a time.

The Jog Dial also functions as an *Enter* key when pressed.

Using the Stylus

Use the stylus to “tap” or “double-tap” on an application icon and to select items on the menu. To use the stylus in **Right-click mode**, hold the stylus down continuously on an icon for a two second interval. The stylus is also used to “type” on the Virtual Keyboard. The two styli that are supplied with your ViewPad™ 100 are designed for your screen. Use of other pointers could damage your screen.

When not in use, you can conveniently place your stylus in the storage slot located in the rear of your ViewPad 100 SuperPDA.

Moving Windows

- 1 To move a window on the screen, press on the title-bar gently with the stylus.
- 2 Move the window slowly to a new location.

Operating System not Responding

If your operating system is not responding to your stylus, try double-tapping on the screen. Also, try solid taps in the center of the icon. (You may also need to recalibrate when your battery has completely drained—the screen will be blank.)

If you still have problems, you may need to recalibrate your screen.

Calibrating the Touch Screen

If your touch screen is not responding to taps with the stylus, you may need to recalibrate the screen. *Calibrate* allows you to recalibrate your screen.

Double-tap allows you to set the speed and sensitivity of your double-tap.

- 1 Tap on Start.
- 2 Tap on Settings.
- 3 Tap on Control Panel.
- 4 Double-tap on Stylus.
- 5 Tap on the Calibration tab.
- 6 Tap on the Recalibration button.

Follow the instructions which will ask you to place your stylus in the targets (cross-hair symbols) and hold for a second or two.

Adjusting Stylus Double-tap Rate

Follow the instructions for calibrating the Touch Screen above or follow the *Help* steps listed below.

- 1 Tap on Start.
- 2 Tap on Help.
- 3 Tap on Settings.
- 4 Tap on Stylus.

Tap on the underlined text *Recalibrate the touch screen* or *Adjust the stylus double-tap rate* for instructions.

Soft Reset

Should your ViewPad™ 100 fail to respond, it may be restarted without turning off the power.

- 1 Unscrew your stylus then use the reset pointer to press the reset button.

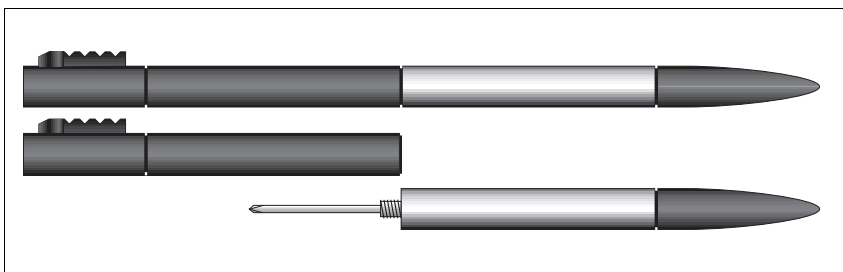


Figure 11: Stylus

- 2 The reset button is on the top of your ViewPad™ 100. See Figure 12. Press the reset button to restart your ViewPad 100.

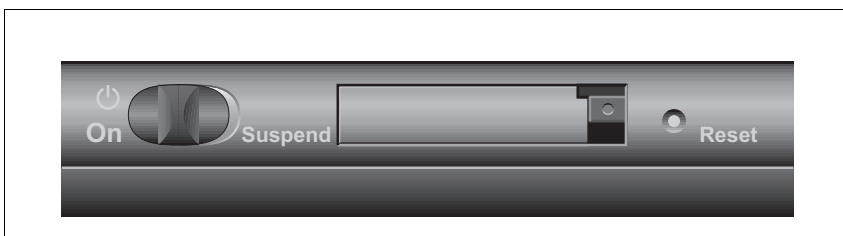


Figure 12: Reset Button

NOTE: This is a soft reset (operating system is reset). Reset **DOES NOT** clear memory (RAM).

Hard Reset

A hard reset may be required on rare occasions if your View Pad 100 completely locks up and the soft restart described above does not help.

- 1 Remove the back cover panel using a small Phillips-head screwdriver or the Phillips-head attached to your stylus.
- 2 Push the restart button indicated by the arrow in Figure 13.
- 3 Carefully replace the cover and secure with the small Phillips-head screw.

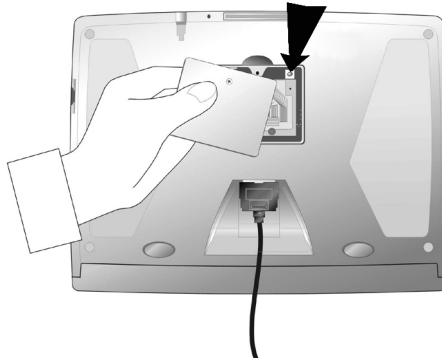


Figure 13: Hard Restart

CAUTION: A hard reset will restore the factory default settings and also delete internal memory (RAM).

Launch Dial

The Launch Dial application provides an easy way to open frequently used programs. Open Launch Dial by clicking its icon on the Windows® task tray. To select an application, rotate the dial (using the Rotate Dial Forward or Rotate Dial Backward buttons or by using the Jog Dial on the side of the unit) then click the Open button. The selected application will then open.

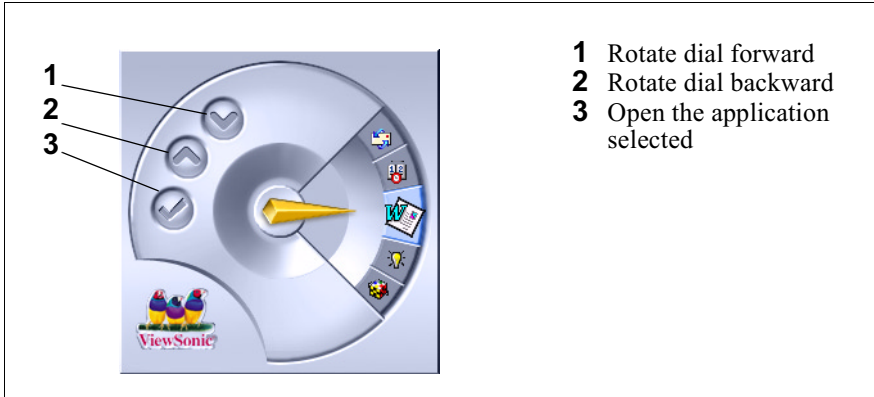


Figure 14: The Launch Dial Window

Launch Dial Settings

Adding an Application to the Dial

Dial up the Add (“New”) icon, then click the Open button. The Launch Dial Add Application window will open. Browse to the desired application then double-click it. The application will be added to the dial.

Removing an Application from the Dial

Dial up the Remove (trash can) icon, then click the Open Button. The Launch Dial Remove Application window will open. Review the list of applications that can be removed from Launch Dial. Double-click the application to be removed and it will no longer be listed as an available option on the dial.

Hiding the Launch Dial

Dial up the Hide (door) icon, then click the Open button. The Launch Dial application window will close. Launch Dial can be re-opened by clicking its icon on the Windows® task tray.

Host PC Data Synchronization

Overview

Two software installation CDs are included with your ViewPad™ 100:

- The Microsoft® ActiveSync® CD
- The ViewSonic® Wizard CD

The Microsoft ActiveSync software allows you to share files between your host PC and the ViewPad 100. The ViewPad Wizard installs software that allows you to synchronize your Microsoft Outlook® data with your host PC.

For file sharing and data synchronization between your ViewPad 100 and your PC, you will establish either a:

- Direct Cable (default) connection or an
- Infrared (optional) connection between both devices.

In order to establish either type of connection you will need to install the Microsoft ActiveSync software then the ViewPad Wizard synchronization software during your initial setup onto the host PC.

Installing the Synchronization Software

About the Software

The Microsoft ActiveSync CD - includes Microsoft Outlook 2000 and the ActiveSync software that enables you to transfer files between your ViewPad and a host PC (personal computer) running Windows 98®, Windows Me® (Millennium) or Windows 2000 Professional®.

- The Microsoft ActiveSync CD software must be installed on to the host before the ViewSonic® Wizard CD software.
- It is during the Microsoft ActiveSync installation that the default USB Synchronization cable connection is established between your ViewPad 100 and host PC. An alternate IR Sync infrared connection method is described in a follow-on part of this section.

The ViewSonic® Wizard CD - contains Pocket On-Schedule® Outlook synchronizing software, the ViewPad User Guide, and ViewPad registration information. The Pocket On-Schedule synchronizing software enables you to synchronize your Microsoft Outlook® data with your host PC.

- The ViewSonic® Wizard CD software must be installed onto the host after the Microsoft ActiveSync CD software.
- To synchronize Microsoft Outlook data from your PC to Pocket On-Schedule on your ViewPad 100, you must have Microsoft Outlook 2000 or later installed on your PC. If you need to install Microsoft Outlook 2000, the

setup software can be located in the Outlook folder in the Extras folder on the Microsoft® ActiveSync® CD-ROM.

The ActiveSync Software Installation

This process establishes the default cable connection and allows file transfer between your ViewPad™ 100 and a host PC.

- 1** Plug the USB Synchronization Cable into the ViewPad 100 but do NOT plug the other end of the cable into the host PC.

Important: When connecting your ViewPad 100, do not plug the USB Synchronization Cable into your host PC until the Get Connected window appears during the ActiveSync software installation process. If the host PC end of the cable is plugged into the host PC too soon, the setup process will not be able to proceed beyond the Get Connected window when the Next button is clicked.

- 2** Insert the Microsoft ActiveSync CD-ROM into the CD drive of your PC.

If you do not have a PC with a CD-ROM drive, contact ViewSonic® Customer Support. See the Customer Support section in this Quick Start Guide for contact information.

- 3** Follow the on-screen instructions.
- 4** When the Get Connected window appears, plug in the USB Synchronization Cable from your ViewPad 100 as shown here:

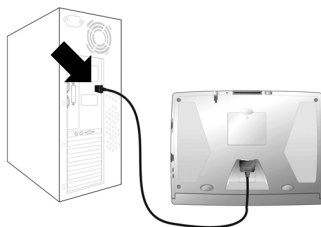


Figure 15: The USB Synchronization Cable Connection

- 5** Allow time for the synchronization to progress, then follow the on-screen instructions.

The ViewSonic Wizard Installation

This process allows you to synchronize your Microsoft Outlook® data between devices.

- 1 Insert the ViewSonic® Wizard CD-ROM into your computer's CD-ROM drive.

Reminder: Install the Microsoft® ActiveSync® and, if necessary, Microsoft Outlook 2000 from the ActiveSync® CD before installing the ViewSonic® Wizard.

- 2 Wait for the CD-ROM to auto-start (takes about 20 seconds.)

If the CD-ROM does not auto-start, double-click the CD-ROM drive icon, then double-click on "viewsonic.exe."

- 3 Follow the on-screen instructions.

Resetting the Connection

There may be instances where you will want to change the ViewPad™ 100 to host PC connection from the default direct transfer method using the USB Synchronization Cable to the alternative infrared link method using the IR Sync connection.

Reconnecting by Infrared

To set up an infrared link with an infrared compatible host PC using the ViewPad 100's IR Sync connection port:

- 1 Allow your ViewPad and host PC to communicate with one another as shown to facilitate the infrared link.

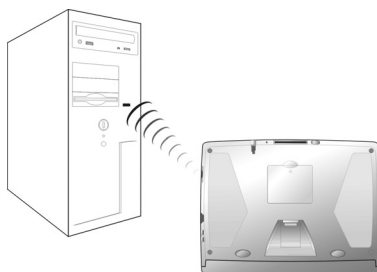


Figure 16: The Infrared Connection

- 2 From on the Start icon on your ViewPad desktop, select Settings > Control Panel > Communications > the PC tab, then check the box that says: "Allow direct connection with desktop or laptop computer when the device is attached."

- 3 In the same window, check IR to PC in the drop down menu, then click OK.
- 4 Open the Microsoft ActiveSync program on your PC and align the IR ports of the PC and the ViewPad 100.
- 5 On the ViewPad™ 100, select Start > Programs > Communications > IR Sync. Your host PC should now detect the ViewPad 100 and set up a connection.
- 6 Follow the host PC's on-screen Getting Connected instructions.

Reconnecting by USB Synchronization Cable

To re-establish a direct cable connection using the USB Synchronization Cable:

- 1 From on the Start icon on your ViewPad 100 desktop, select Settings > Control Panel > Communications > the PC tab, then check the box that says: "Allow direct connection with desktop or laptop computer when the device is attached." This is the default setting.
- 2 Confirm that the connection is to be USB to PC.
- 3 Click on the Microsoft® ActiveSync® icon located on your host PC. Follow the host PC's on-screen Getting Connected instructions.

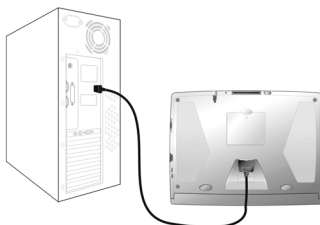


Figure 17: The USB Synchronization Cable Connection

Using the Connection

Now that you have established a direct connection with your host PC, you can transfer files with your ViewPad 100 by clicking on Microsoft ActiveSync and following the on-screen directions. In addition, you can synchronize your Microsoft Outlook® from your host PC with your ViewPad 100. Consult the Pocket On-Schedule® User Guide (located in the ViewPad 100 help folder) for information on synchronizing the Pocket On-Schedule software with Microsoft Outlook 2000.

Display Properties

This function allows you to customize the appearance of your Windows CE® desktop and select power saving settings.

- 1 Tap Start.
- 2 Tap Settings.
- 3 Tap Control Panel.
- 4 Double-tap Display.

Tap on the tab to set Background or Appearance.

Password

To protect your valuable information, you may want to set up a password for your *ViewPad™ 100 SuperPDA*.

- 1 Tap on Start.
- 2 Tap on Settings.
- 3 Tap on Control Panel.
- 4 Double-tap on Password.
- 5 Follow instructions in the window.

PCMCIA and CompactFlash Cards

PCMCIA and CompactFlash® cards extend the functionality of your *ViewPad™ 100 SuperPDA*, as interfaces for peripheral devices such as extra storage, modem and network connections.

Using PCMCIA Card

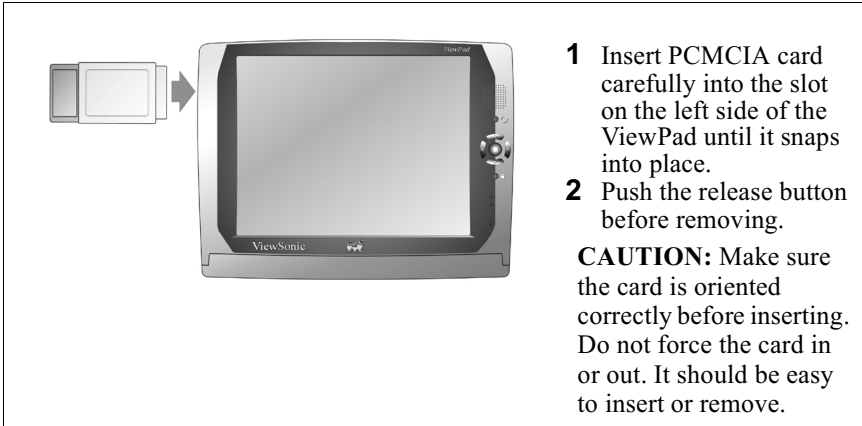


Figure 18: PCMCIA Card

Using CompactFlash Card

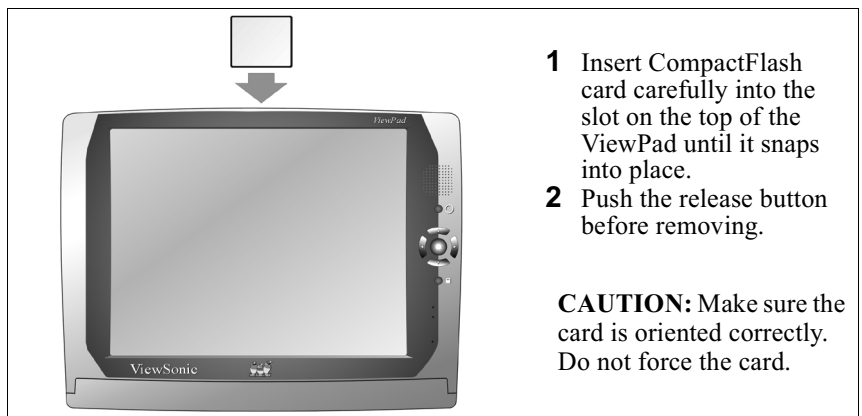


Figure 19: CompactFlash Card

For a list of supported PCMCIA and CompactFlash cards, see our web site www.viewsonic.com.

Internet or Local Area Network

An optional modem or LAN card is required in order to access the Internet and/or Local Area Network.

Establishing a Dial-up Connection

- 1 Insert/install optional modem.
- 2 Tap on Start.
- 3 Tap on Programs.
- 4 Tap on Communication.
- 5 Tap on Remote Networking.
- 6 Double-tap on Make New Connection.
- 7 Follow the on-screen instructions. (Enter the connection parameters provided by your ISP, Internet Service Provider).

Establishing a Wired or Wireless Network Connection

To connect to your office network, place the Ethernet LAN or wireless LAN card into the appropriate slot and enter the IP information supplied by your Systems Administrator.

- 1 Insert the ViewSonic® approved LAN Card. (The properties window will open.)
- 2 Enter the IP parameters provided by your Systems Administrator.

NOTE: For a list of approved LAN cards, see www.viewsonic.com.

Using the Browser

After establishing an Internet connection you can browse the Web with Microsoft Internet Explorer®.

- 1 Launch Microsoft Internet Explorer by double-tapping on the icon or press the Application Launch Dial button and use the up and down buttons to select Microsoft Internet Explorer.
- 2 Use the stylus and Virtual Keyboard to enter an Internet address on the address line, for example www.viewsonic.com.
- 3 Use your stylus to tap on the down arrow at the right-side of the address line. This will allow you to choose a recently used Internet address from the “drop-down menu.”

When the *ViewPad™ 100 SuperPDA* is accessing a web page, the small hour glass icon will display next to the globe icon at the bottom of your screen.

CAUTION: To prevent a “lock up,” do not tap on icons, attempt to enter data, or launch software while the hourglass icon is displayed or when a web page

is downloading. The hourglass icon is on the bottom of your screen next to the *Start* button.

Setting up Your E-mail

Your *ViewPad™ 100 SuperPDA* comes with the Microsoft Windows CE Inbox® e-mail program. To set up your e-mail account you will need settings information from your ISP and/or your Network System Administrator.

- 1 Tap on Start.
- 2 Tap on Programs.
- 3 Tap on Application.
- 4 Tap on Pocket On-Schedule.
- 5 Tap on Inbox. (The email application is now open.)
- 6 Tap on Services (on the menu bar, top left on screen).
- 7 Tap on Options (on the drop-down menu).
- 8 Tap on Services tab (on the option menu) if not displayed.
- 9 Tap on the Add button. Enter your setting information. Your System Administrator or ISP (Internet Service Provider) will advise what to enter into the fields.

Accessing your E-mail

Once you have set up your e-mail account, you can access Microsoft Windows CE Inbox by following the steps below.

- 1 Tap on Start.
- 2 Tap on Programs.
- 3 Tap on Application.
- 4 Tap on Pocket On-Schedule.
- 5 Tap on Inbox.

The ViewPad 100 Software Suite

User guides and instructions for the software included on your *ViewPad™ 100 SuperPDA* are included in your ViewSonic® Wizard CD.

NOTE: Each application has its own online *HELP* files.

Your ViewPad 100 comes equipped with the Windows CE® embedded operating system from Microsoft®. If you have experience using Windows® based platforms you will quickly become adept at using the ViewPad's software.

Control Panel

The Control Panel gives you access to system settings allowing you to manage the properties of your ViewPad™ 100.

- 1 Tap on Start.
- 2 Tap on Settings.
- 3 Tap on Control Panel.

To modify ViewPad 100 properties, double-click on the appropriate icon.

Stylus

- Enables you to configure and calibrate your touch screen

Display

- Enables you to set your Background, Appearance, and Backlight Time Out settings

Input Panel

- Enables you to change the size of your on-screen keys and create character short cuts

Network

- Enables you to select and set the network properties of your Ethernet adapter

System

- Allows you to view your ViewPad 100's system information and adjust memory allocation settings

CalliGrapher Handwriting Recognition Software

CalliGrapher® 6.0 adds natural handwriting recognition capability to your ViewPad™ 100 for all handwriting styles - cursive, print or mixed. CalliGrapher analyzes pen strokes written in any application window, converts the pen strokes into text, and sends the recognized text to a target application. Employing advanced fuzzy logic and neural net techniques, CalliGrapher recognizes arbitrary alphanumeric strings as well as words from its integrated dictionary.

CalliGrapher also offers a comprehensive spell checker for all applications on your ViewPad 100. Calligrapher also includes PenCommander, a utility that allows you to create and execute command scripts by simply writing a word command and drawing a circle around it.

Starting CalliGrapher

You can start CalliGrapher by selecting:

Start > Programs > CalliGrapher > CalliGrapher

Or, you can simply select the CalliGrapher icon located in the system toolbar. When CalliGrapher is running, there will be 'pen' icon in the notification area of the Windows CE® taskbar (lower right screen corner). You can open the CalliGrapher main menu by double clicking or tap-and-holding the pen taskbar icon. This menu provides access to mode switching and means to launch CalliGrapher utility programs and Help. You can also shut down CalliGrapher from this menu. An alternative way to open the main menu is to use the PenCommand menu.

Calligrapher Modes of Operation

CalliGrapher may be in one of three modes: Recognition mode, ScratchPad mode, and Off mode. You can switch from one mode to another by clicking the task bar icons or by using CalliGrapher's main menu.

Recognition Mode

A highlighted Pen icon in the Windows® task bar indicates that CalliGrapher is running in the Recognition mode. Recognition mode interprets your drawing on the screen as handwriting. CalliGrapher interprets your drawing then sends the result to the active application window (the current location of the insertion point). In this mode, single and double pen taps are still processed allowing the use of menus and buttons in the usual way. Text selection and other drag operations are done a bit differently -- refer to the Selecting text chapter in the User Guide.

ScratchPad Mode

In addition to handwriting recognition, CalliGrapher provides an easy way to draw sketches and take “ink” notes. ScratchPad mode gives you a virtual sheet of paper with just a click on the Marker icon in the task bar. You can use different colors when you draw on the ScratchPad. To erase strokes, draw a line over the strokes you wish to delete then hold the pen steady for a second. Drawings can be saved, erased, edited, or sent to recognition.

CalliGrapher Off Mode

When no mode icons are in the selected (darkened) state, CalliGrapher is in Off mode and does not process pen activity. Use this mode if your application requires direct pen input.

You can find more detailed information about this application in the CalliGrapher User Guide located in the ViewPad™ 100 help files.

Windows Explorer

The Windows Explorer® is used to view files or folders on the ViewPad 100.

- 1 Tap on Start.
- 2 Tap on Programs.
- 3 Tap on Windows Explorer.

Task Manager

Use Task Manager to manage your working environment. Double-tap on the Task Manager icon to see all current applications in use. You can also close applications from the Task Manager menu.

- 1 Tap on Start.
- 2 Tap on Programs.
- 3 Tap on Accessories.
- 4 Tap on Task Manager.

Pocket On-Schedule

Pocket On-Schedule lets you manage your contacts, appointments and schedules while offering a wide range of personal and business management applications, including PhoneBook, Calendar, Contact, Journal and Task List.

- 1 Tap on Start.
- 2 Tap on Programs.
- 3 Tap on Application.
- 4 Tap on Pocket On-Schedule.

MP3 Player

Your *ViewPad™ 100 SuperPDA* comes with an MP3 player, allowing you to store and play audio files.

- 1 Tap on Start.
- 2 Tap on Programs.
- 3 Tap on MultiMedia.
- 4 Tap on MP3 Player.

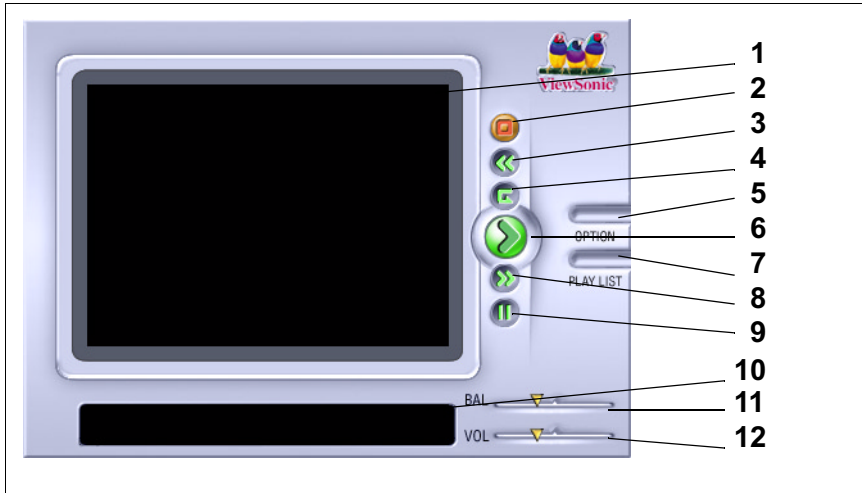


Figure 20: MP3 Player

- | | |
|--------------------------------|-----------------------------|
| 1 PlayList Display Area | 7 PlayList Title |
| 2 Record/stop | 8 Forward |
| 3 Reverse | 9 Pause |
| 4 Loop | 10 Track information |
| 5 Option | 11 Balance control |
| 6 Play | 12 Volume control |

Voice Recorder

The Voice Recorder software allows you to directly record your voice on your *ViewPad™ 100 SuperPDA* so you can create sound files or send voice messages. Before recording you can set parameters, including the name of the recording via the Properties window.

- 1 Tap on Start.
- 2 Tap on Programs.
- 3 Tap on MultiMedia.
- 4 Tap on Voice Recorder.

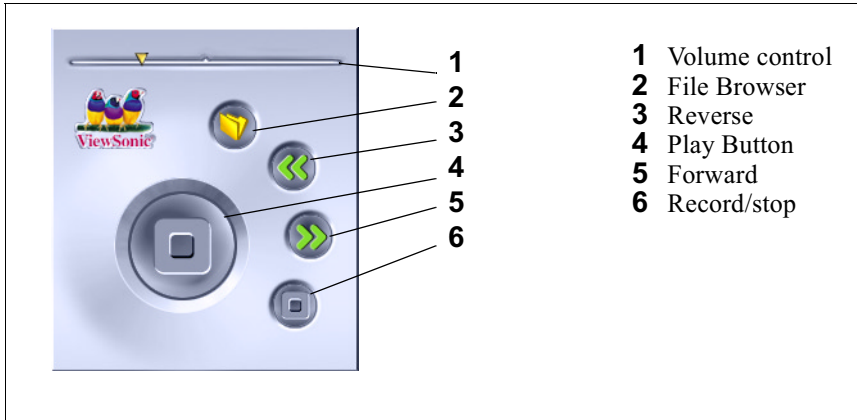


Figure 21: Voice Recorder

Picture Viewer

The Picture Viewer allows you to open picture files, including bitmap, JPEG, and GIF files.

- 1 Tap on Start.
- 2 Tap on Programs.
- 3 Tap on Accessories.
- 4 Picture Viewer.

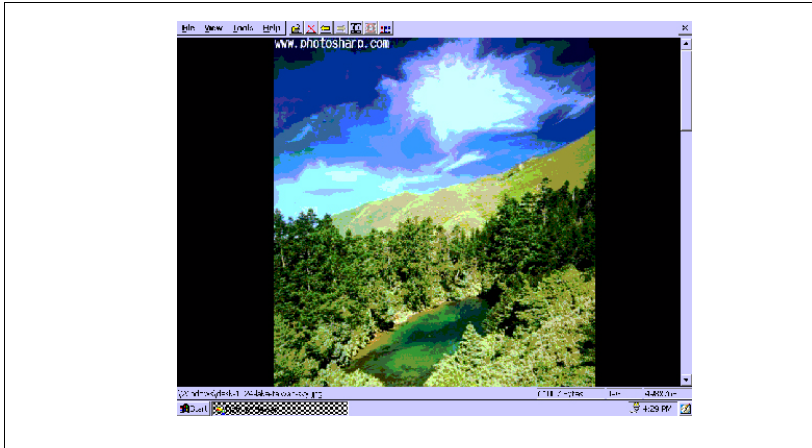


Figure 22: Picture Viewer

Primer

Primer is a PDF (Portable Document Format) reader. This application will read any PDF files you receive as email attachments or downloads from the Internet.

- 1 Tap on Start.
- 2 Tap on Programs.
- 3 Tap on Application.
- 4 Tap on Primer.

PTab

This is a fully functional spreadsheet designed for use with Windows CE®. You can use PTab to create spreadsheets or *read, modify* and *save* spreadsheets in Microsoft Excel format.

- 1 Tap on Start.
- 2 Tap on Programs.
- 3 Tap on Application.
- 4 Tap on PTab.

For more information and for documentation see www.z4soft.com.

Microsoft Pocket Word

Pocket Word works much like Word 97 or Word 2000 and is optimized for Windows CE®. It supports TrueType fonts, simple formatting and can display embedded image files. Pocket Word will allow you to *read* and *edit* Microsoft Word formats.

- 1 Tap on Start.
- 2 Tap on Programs.
- 3 Tap on Application.
- 4 Tap on Microsoft Pocket Word.

Microsoft Internet Explorer

Microsoft Internet Explorer is designed to provide a Internet access while using a Windows CE® powered device.

- 1 Tap on Start.
- 2 Tap on Programs.
- 3 Application.
- 4 Tap on Internet Explorer.

bSquare Messenger

bSquare Messenger allows you to use your MSN Messenger username and password to send and receive instant messages from your ViewPad™ 100.

- 1 Tap on Start.
- 2 Tap on Programs.
- 3 Tap on Communication.
- 4 Tap on bSquare Messenger.

Pocket MBA-Calc

Pocket MBA-Calc is a financial and statistical calculator which allows you to paste results into other applications. Many other features are provided, and you can learn more by using the context-sensitive help system.

- 1 Tap on Start.
- 2 Tap on Programs.
- 3 Tap on Accessories.
- 4 Tap on Pocket MBA-Calc.

Citrix ICA Client

The Citrix® ICA® (Independent Computing Architecture) permits server-based computing. The ICA® protocol enables your ViewPad™ 100 to function as a terminal when connected to a server running Citrix® MetaFrame® software.

The Citrix® ICA Client® for Windows CE® lets you use your ViewPad 100 to make an ICA® connection to a Citrix® server. When the ICA® connection is established, you can access applications and work with files as if you were working at the Citrix® server itself.

- 1** Tap on Start.
- 2** Tap on Programs.
- 3** Tap on Communication.
- 4** Tap on ICA Manager®.

Microsoft RDP 5.0

This is a terminal services client that allows you to connect your ViewPad 100 to a Microsoft Windows NT® or Windows 2000® terminal server.

- 1** Tap on Start.
- 2** Tap on Programs.
- 3** Tap on Communication.
- 4** Tap on Microsoft RDP.

Jeode JVM (Java Virtual Machine)

Jeode provides a plug-in for Microsoft Internet Explorer® that will enable you to view Java enabled Web pages.

- 1** Tap on Start.
- 2** Tap on Programs.
- 3** Tap on Jeode JVM.
- 4** Tap on Plug-In.
- 5** Tap on Register Plug-In.

ClearVue Presentation Viewer

The ClearVue Presentation Viewer displays presentations created in Microsoft PowerPoint® 97, PowerPoint 2000 and PowerPoint XP. The ClearVue Presentation Viewer allows you to view your presentation as it was created or to create a Custom Slide List. In this list, you can select which slides to include in the presentation and you can change the order of the slides presented.

Transferring PowerPoint Files to your ViewPad

You must change the conversion settings in ActiveSync in order to transfer PowerPoint files to your ViewPad™ 100. You can do this by following this procedure:

Click on the ActiveSync® icon on your host PC > click the Options button > click the Rules tab > click the Conversion Settings button > click the Desktop to Device tab > highlight the Microsoft PowerPoint icon > click the Edit button > click on the “(No Conversion), (*PPT)” setting in the drop down menu > click OK

Opening ClearVue

To open ClearVue®:

Click on Start > Programs > Application > ClearVue Presentation.

Viewing a Presentation

View Show is available from the Slide Show menu, the View Show ToolTip icon or from the Context menu obtained by right clicking an image in the Normal View or Slide Sorter.

If your presentation contains a PowerPoint Custom Show, you can select it from Show List on the menu bar. Or, you can create your own Custom Slide List, by selecting which slides to include and changing the order of the slides in your presentation. The Set Up Show dialog allows you to set Slide Transition timings.

While a show is running, you can move to another slide by single clicking on the presentation screen to advance one slide forward or by right clicking on the presentation screen to bring up a Context menu. From this menu, you can view the Next slide, the Previous slide or select a slide from the Go To drop down list. A show can be interrupted by right clicking on the presentation screen and choosing End Show from the Context menu.

Changing the View

The Slide Viewer opens with the presentation in the Normal View. You can change to the Slide Sorter by selecting Slide Sorter from the View menu, by using the Slide Sorter ToolTip Icon or by right clicking the image in your current view and choosing another view from the Context Menu.

Create a Custom Slide List

The ClearVue® Presentation Viewer allows you to Select which slides to include in your presentation, Sort the slides as desired and to set the Slide Transition Timings. You can Sort and Select slides from the Normal View or the Slide Sorter.

Slide transition timings can be set in the Set Up Show dialog.

The Normal View

The Normal View has three panes, the Slide List, the Image Window and the Notes Window. The Slide List window allows you to:

- Choose the image shown in the Image window by selecting the slide in the list.
- Select which slides will show in your presentation by checking or unchecking the slide checkbox in the slide list.
- Move a slide up or down by using the Move slide up... or Move slide down... tooltip icon

The Image Window shows a preview image of the currently selected slide. From the Image Window you can:

- Scroll through the slides using the scroll bars.
- Right Click on the image to bring up a context menu. From this Context menu you can:
 - Select or deselect a slide to be shown in the presentation.
 - Switch to the Slide Sorter
 - Start the Slide Show

If your presentation contains a PowerPoint Custom Show, you can select the show from the Show List on the menu bar.

The Slide Sorter

The Slide Sorter Image Window shows slide thumbnails of the currently selected presentation. From this window, you can sort the slides by using:

- The Move slide up or Move slide down tooltip icon
- The mouse to drag and drop the slide to the desired location

- Select which slides to include in your presentation by right clicking on an image as selecting or deselecting the Select Slide from the Context menu.
- Change Views by Right Clicking in the thumbnail screen to bring up a Context menu. From this menu you can select the Normal View or start the Slide Show

You can find more detailed information about this application in the ClearVue® User's Guide located in the ViewPad™ 100 help files.

JETCET PRINT

JETCET PRINT allows you to print directly from your ViewPad 100. This utility works within the capabilities of your favorite applications.

Select the Print option in an application and the JETCET PRINT dialog box appears with a list of available printer drivers.

Printing

If you are connected to a network printer, insert its printer path. If not connected to a network printer, you can use an industry standard USB cable to establish a reliable connection between your device and a printer.

Drivers

JETCET PRINT provides both color and monochrome print drivers to support select Canon, Epson, Hewlett-Packard & Postscript Level II printers. JETCET PRINT also includes a Print Spooler, USB Driver and additional Enhanced Printer Controls.

Please refer to JETCET PRINT's help menu for additional usage and troubleshooting information.

ViewPad Options and Accessories

ViewPad Cradle

The ViewPad™ cradle permits easy connectivity to a host PC, an external mouse, a keyboard, a 10/100 Mbps Ethernet LAN and a power source.

The cradle offers a USB type B port to connect to your PC's type A USB port. Use type B for synchronization with your PC ports, as well as PS/2 support for a keyboard and mouse.

NOTE: The PC must have Microsoft ActiveSync® installed in order to synchronize with the ViewPad 100.

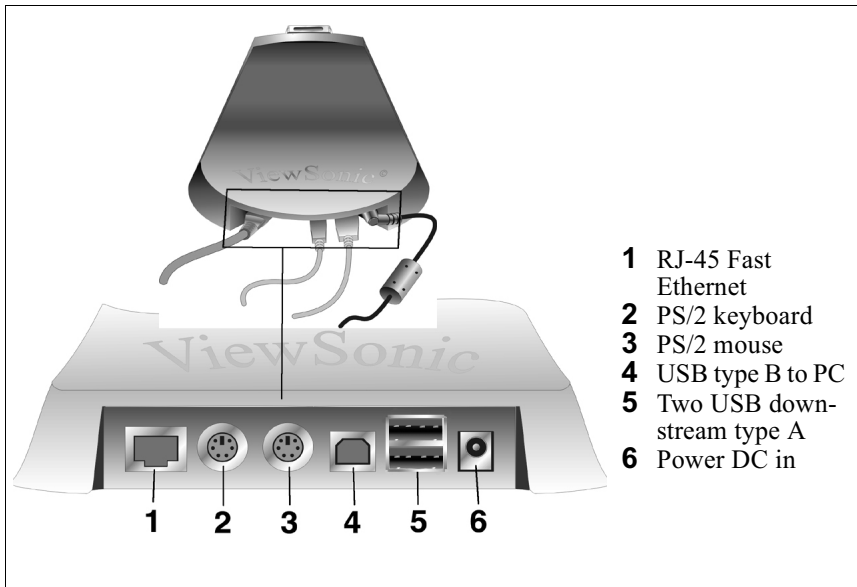


Figure 23: Cradle Ports

External Keyboard

You can attach the optional external keyboard via the USB port on the left side of the *ViewPad™ 100 SuperPDA* as shown in Figure 24 or through the ViewPad™ cradle (Figure 23.)

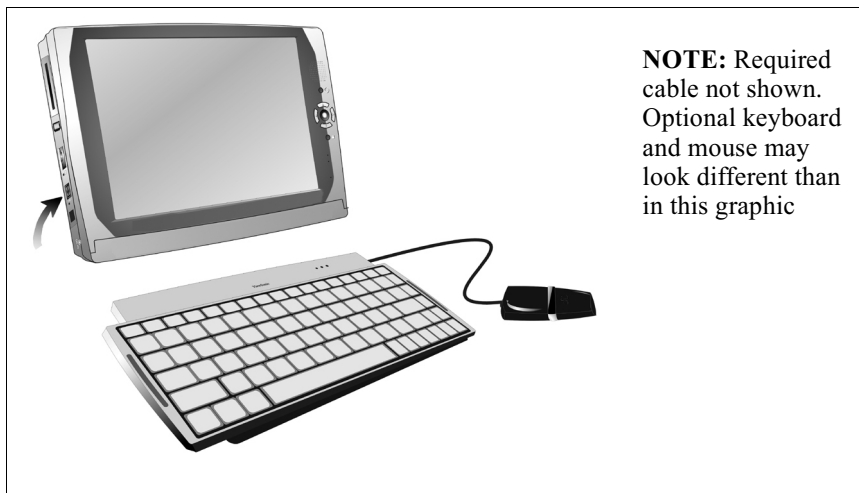


Figure 24: External Keyboard

Setting up the PC/keyboard Connection

- 1 Tap on Start.
- 2 Tap on Control Panel.
- 3 Double-tap on Keyboard.

The Keyboard Properties window allows you to test your PC/keyboard connection.

External Mouse

An optional external mouse connects to the keyboard as shown in Figure 24 or directly into the ViewPad 100's USB port.

External Speakers

You can enhance your Internet experience and more fully enjoy music and games with external speakers. Plug speakers into the Audio Out jack. See *Figure 4*.

External Microphone

You can use an external microphone to improve the quality of your voice recordings. Plug a microphone into the Microphone jack. *See Figure 4.*

External Display

For presentations or lectures, you can connect a CRT, LCD or projector via the supplied Mini-VGA port. *See Figure 8.*

Appendix

ViewPad 100 Specifications

ViewPad™ Processor	Intel® StrongARM SA-1110 206MHz 256 uBGA Package
Companion Chip	Intel StrongARM SA-1111 256-uBGA Package Integrated Audio, PC Card Interface, USB Host Controller, and CF Controller
Flash ROM	32 Mb
Memory (RAM)	SDRAM 128 Mb
Graphics	Media-Q MQ200 Graphics Chip 2-Mb Embedded Memory 128-bit 2D Graphics
Video Resolution Built-in LCD Display	800x600@60Hz (Native), 75Hz
Video Resolution External Display	640x480@60Hz, 75Hz, 85Hz 800x600@60Hz, 75Hz, 85Hz 1024x768@60Hz, 75Hz, 85Hz
Display	High Luminance TFT LCD Display 10" screen RGB Vertical Stripe
Touch Panel	4-wire Resistive Touch Screen
Expansion	1 Type II PC Card Slot (PCMCIA v2.1) 1 CompactFlash Type II Slot
Audio	18bit A/D Stereo 48 KHz Sampling Rate Built-in Mic and Speaker
System Ports	1 Universal Serial Bus (USB) Port Microphone and Headphone Jacks Infrared USB Sync/Cradle 16-pin Connector

Battery	Rechargeable 1800 mAh lithium ion Battery Pack Fast Charging (2 hours Fast Charge Mode – Deep Suspend) Internal rechargeable backup battery
Battery Life	Up to 5 hours (depending on use and configuration) Up to 10 hours with optional Extended Battery Pack
AC/DC Adapter	90~264 VAC 50/60 Hz 19.5 VDC Output Voltage 2.0A 40W Power Output
Dimensions	287.7 mm x 212.8 mm x 23 mm (W x L x D) 11.3 in. x 8.4 in. x 0.9 in. (W x L x D)
Weight	1.1 kg 2.5 lbs.
Package Contents	ViewPad™ 100 Quick Start Guide ViewPad 100 battery pack AC/DC power adapter Power cord Two (2) Styli USB synchronization cable Mini-VGA adapter Case sleeve (which folds into a stand) ViewSonic® Wizard CD-ROM which includes User Guide and applications documentation Microsoft® ActiveSync® CD-ROM
Compliance	UL, cUL, FCC-B, CCIB, CCEE, VCCI

Included
Software

bSquare Messenger®
CalliGrapher® Handwriting Recognition
Citrix® ICA® Client 6.0
ClearVue™ Presentation Viewer®
Display Utility
Jeode™ Java Virtual Machine®
JETCET® PRINTER
Launch Dial®
MBA Calculator®
MP3 Player®
Microsoft Inbox®
Microsoft Internet Explorer®
Microsoft Pocket Word®
Microsoft RDP® 5.0
Microsoft Windows CE® 3.0 Operating System
Picture Viewer®
Pocket On-Schedule®
Primer PDF Viewer®
PTab® Spreadsheet Software
Task Manager
Voice Recorder

Customer Support

For the nearest ViewSonic® service provider, see the table below or contact your reseller.

You will need the product's serial number on-hand when you call.

Country/ Region	Website	T = Telephone F = FAX	Email
United States	viewsonic.com/ support	T: (800) 688-6688 F: (909) 468-1202	viewpadsupport@ viewsonic.com
Canada	viewsonic.com/ support	T: (800) 688-6688 F: (909) 468-1202	service.ca@ viewsonic.com
United Kingdom	viewsoniceurope.com	T: 0800 833 648 F: (01293) 643910	service.eu@ viewsoniceurope.com
Europe, Middle East, Baltic countries, and North Africa	viewsoniceurope.com	Contact your reseller	service.eu@ viewsoniceurope.com
Australia and New Zealand	viewsonic.com.au	T: +61 2 9929 3955 F: +61 2 9929 8393	service.au@ viewsonic.com
Singapore/ Southeast Asia	viewsonic.com.sg	T: 65 2734018 F: 65 2731566	service.sg@ viewsonic.com
Other Asia/Pacific countries and Indian Peninsula	viewsonic.com.tw	T: 886 2 2246 3456 F: 886 2 8242 3668	service.ap@ viewsonic.com
South Africa	viewsonic.com/asia	T: 886 2 2246 3456 F: 886 2 8242 3668	service.ap@ viewsonic.com

Cleaning and Maintenance

- Make sure the *ViewPad™ 100 SuperPDA* is turned off.
- Never spray or pour any liquid directly onto the screen or case.
- Never immerse the ViewPad 100 in any liquid.

To clean the screen:

- 1** Wipe the screen with a clean, soft, lint-free cloth. This removes dust and other particles.
- 2** If still not clean, apply a small amount of non-ammonia, non-alcohol based glass cleaner onto a clean, soft, lint-free cloth, and wipe the screen.

To clean the case:

- 1** Use a soft, dry cloth.
- 2** If still not clean, apply a small amount of a non-ammonia, non-alcohol based, mild non-abrasive detergent onto a clean, soft, lint-free cloth, then wipe the surface.

DISCLAIMER

ViewSonic® does not recommend the use of any ammonia or alcohol-based cleaners on the ViewPad 100 screen or case. Some chemical cleaners have been reported to damage the screen and/or case of the ViewPad 100.

ViewSonic will not be liable for damage resulting from use of any ammonia or alcohol-based cleaners.

Limited Warranty

ViewPad™ Products

What the warranty covers:

ViewSonic® warrants its ViewPad products to be free from defects in material and workmanship during the warranty period. If a ViewPad product proves to be defective in material or workmanship during the warranty period, ViewSonic will, at its sole option, repair or replace the product with a like product. Replacement product or parts may include remanufactured or refurbished parts or components. ViewSonic provides no warranty for the third party software included with the product. For specific warranty information, please see the EULAs included with the product. ViewSonic does not warrant that software will meet your requirements or that operation of software will be uninterrupted or error free. **VIEWSONIC AND ITS SUPPLIERS DISCLAIM ALL WARRANTIES AND CONDITIONS, EITHER EXPRESS OR IMPLIED, INCLUDING, BUT NOT LIMITED TO, IMPLIED WARRANTIES OF MERCHANTABILITY, FITNESS FOR A PARTICULAR PURPOSE, AND NON-INFRINGEMENT.**

How long the warranty is effective:

ViewSonic ViewPads are warranted for one (1) year for all parts (except software) and one (1) year for all labor from the date of the first consumer purchase.

Who the warranty protects:

This warranty is valid only for the first consumer purchaser.

What the warranty does not cover:

1. Software
2. Any product on which the serial number has been defaced, modified or removed.
3. Damage, deterioration or malfunction resulting from:
 - a. Accident, misuse, neglect, fire, water, lightning, or other acts of nature, unauthorized product modification, or failure to follow instructions supplied with the product.
 - b. Repair or attempted repair by anyone not authorized by ViewSonic.
 - c. Damage to or loss of any programs, data or removable storage media.
 - d. Software or data loss occurring during repair or replacement.
 - e. Any damage of the product due to shipment.
 - f. Removal or installation of the product.
 - g. Causes external to the product, such as electrical power fluctuations or failure.
 - h. Use of supplies or parts not meeting ViewSonic's specifications.
 - i. Normal wear and tear.
 - j. Any other cause which does not relate to a product defect.
4. Removal, installation, and set-up service charges.

How to get service:

1. For information about receiving service under warranty, contact ViewSonic Customer Support. You will need to provide your product's serial number.
2. To obtain service under warranty, you will be required to provide (a) the original dated sales slip, (b) your name, (c) your address, (d) a description of the problem, and (e) the serial number of the product.
3. Take or ship the product freight prepaid in the original container to an authorized ViewSonic service center or ViewSonic.
4. For additional information or the name of the nearest ViewSonic service center, contact ViewSonic.

Limitation of implied warranties:

THERE ARE NO WARRANTIES, EXPRESS OR IMPLIED, WHICH EXTEND BEYOND THE DESCRIPTION CONTAINED HEREIN INCLUDING THE IMPLIED WARRANTY OF MERCHANTABILITY AND FITNESS FOR A PARTICULAR PURPOSE.

Exclusion of damages:

VIEWSONIC'S LIABILITY IS LIMITED TO THE COST OF REPAIR OR REPLACEMENT OF THE PRODUCT. VIEWSONIC SHALL NOT BE LIABLE FOR:

1. DAMAGE TO OTHER PROPERTY CAUSED BY ANY DEFECTS IN THE PRODUCT, DAMAGES BASED UPON INCONVENIENCE, LOSS OF USE OF THE PRODUCT, LOSS OF DATA, LOSS OF TIME, LOSS OF PROFITS, LOSS OF BUSINESS OPPORTUNITY, LOSS OF GOODWILL, INTERFERENCE WITH BUSINESS RELATIONSHIPS, OR OTHER COMMERCIAL LOSS, EVEN IF ADVISED OF THE POSSIBILITY OF SUCH DAMAGES.
2. ANY OTHER DAMAGES, WHETHER INCIDENTAL, CONSEQUENTIAL OR OTHERWISE.
3. ANY CLAIM AGAINST THE CUSTOMER BY ANY OTHER PARTY.

Effect of state law:

This warranty gives you specific legal rights, and you may also have other rights which vary from state to state. Some states do not allow limitations on implied warranties and/or do not allow the exclusion of incidental or consequential damages, so the above limitations and exclusions may not apply to you.

Sales outside the U.S.A. and Canada:

For warranty information and service on ViewSonic products sold outside of the U.S.A. and Canada, contact ViewSonic or your local ViewSonic dealer.

ViewSonic ViewPad Warranty (V2.0)

Release Date: 10-15-01

Safety Guidelines

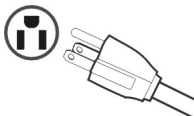
CAUTION: The socket-outlet should be installed near the equipment and be easily accessible.

CAUTION: Use a power cable that is properly grounded. Always use the appropriate AC cord that is certified for the individual country. Some examples are listed below:

- | | | | |
|---------------|-----|-------------------|--------------------------------|
| USA | UL | Switzerland | SEV |
| Canada | CSA | Britain | BASE/BS |
| Germany | VDE | Japan | Electric Appliance Control Act |

IMPORTANT NOTICE CONCERNING POWER CORD SELECTION

The power cord set for this unit has been enclosed and has been selected according to the country of destination and must be used to prevent electric shock.



For the United States and Canada

In the United States and Canada the male plug is NEMA5-15 style (shown above), UL Listed, and CSA Labeled. For units which are mounted on a desk or table, type SVT or SJT cord sets may be used. For units which sit on the floor, only SJT type cord sets may be used. The cord set must be selected according to the current rating for your unit. Please consult the table below for the selection criteria for power cords used in the United States and Canada.

Cord Type	Size of Conductors in Cord	Maximum Current Rating of Unit
SJT	18 AWG	10 Amps
	16 AWG	12 Amps
	14 AWG	12 Amps
SVT	18 AWG	10 Amps
	17 AWG	12 Amps

For European Countries

In Europe you must use a cord set which is appropriate for the receptacles in your country. The cord set is HAR-Certified, and a special mark that will appear on the outer sheath, or on the insulation of one of the inner conductors.

AC PLUG CORD PRECAUTIONS FOR THE UNITED KINGDOM

FOR YOUR SAFETY PLEASE READ THE FOLLOWING TEXT CAREFULLY.

IF THE FITTED MOULDED PLUG IS UNSUITABLE FOR THE SOCKET OUTLET THEN THE PLUG SHOULD BE CUT OFF AND DISPOSED OF SAFELY.

THERE IS A DANGER OF SEVERE ELECTRICAL SHOCK IF THE CUT OFF PLUG IS INSERTED INTO AN APPROPRIATE SOCKET.

If a new plug is to be fitted, please observe the wiring code as shown below.

If in any doubt, please consult a qualified electrician.

WARNING: THIS APPLIANCE MUST BE EARTHED.

IMPORTANT: The wires in this mains lead are coloured in accordance with the following code:

- Green-and-Yellow: Earth
- Blue: Neutral
- Brown: Live

If the coloured wires of the mains lead of this appliance do not correspond with the coloured markings identifying the terminals in your plug, proceed as follows:

The wire which is coloured GREEN-AND-YELLOW must be connected to the terminal in the plug which is marked by the letter E or by the Earth symbol or coloured GREEN or GREEN-AND-YELLOW.

The wire which is coloured BLUE must be connected to the terminal in the plug which is marked with the letter N or coloured BLACK. The wire which is coloured BROWN must be connected to the terminal in the plug which is marked with the letter L or coloured RED.

If you have any questions concerning which proper power cord to use, please consult with the dealer from whom you have purchased the product.

Compliance Information

This equipment has been tested and found to comply with the limits for a Class B digital device, pursuant to part 15 of the FCC Rules. These limits are designed to provide reasonable protection against harmful interference in a residential installation. This equipment generates, uses, and can radiate radio frequency energy, and if not installed and used in accordance with the instructions, may cause harmful interference to radio communications. However, there is no guarantee that interference will not occur in a particular installation. If this equipment does cause harmful interference to radio or television reception, which can be determined by turning the equipment off and on, the user is encouraged to try to correct the interference by one or more of the following measures:

- Reorient or relocate the receiving antenna.
- Increase the separation between the equipment and receiver.
- Connect the equipment into an outlet on a circuit different from that to which the receiver is connected.
- Consult the dealer or an experienced radio/TV technician for help.

FCC Warning

To assure continued FCC compliance, the user must use grounded power supply cord and the provided shielded video interface cable with bonded ferrite cores. If a BNC cable is going to be used, use only a shielded BNC(5) cable. Also, any unauthorized changes or modifications not expressly approved by the party responsible for compliance could void the user's authority to operate this device.

ViewSonic Corporation