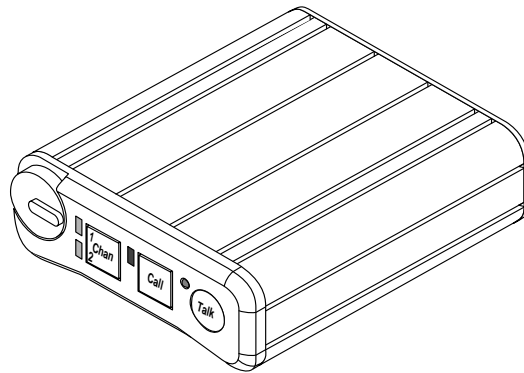


# **Telex**

---

## **Operating Instructions**



### **BP-1002/BP-2002**

### **Belt Packs**

### **Audiocom® Intercom System**



## **INTRODUCTION**

The Audiocom® BP-1002 and BP-2002 are microprocessor controlled one- and two-channel intercom belt packs. An internal switch and jumper setting allows the units to be used with Clear-Com® components, if desired. Other internal switch and jumper settings allow the unit to be uniquely configured to the operator's requirements.

## **FCC STATEMENT**

This equipment uses, and can radiate radio frequency energy that may cause interference to radio communications if not installed in accordance with this manual. The equipment has been tested and found to comply with the limits of a Class A computing device pursuant to Subpart B, Part 15 of FCC Rules which are designed to provide reasonable protection against such interference when operated in a commercial environment. Operation of this equipment in a residential area may cause interference which the user (at his own expense) will be required to correct.



This product meets the Electromagnetic Compatibility Directive, 89/336/EEC.

*®Audiocom is a registered trademark of Telex Communications, Inc., Burnsville, Minnesota 55337*  
*®Clear-Com is a registered trademark of Clear-Com Intercom Systems*

## **End-User License Agreement for Telex® Software**

**IMPORTANT - Please read this document carefully before using this product.**

THIS DOCUMENT STATES THE TERMS AND CONDITIONS UPON WHICH TELEX COMMUNICATIONS, INC. (THE 'COMPANY') OFFERS TO LICENSE THE INSTALLED SOFTWARE OR PROGRAM (THE 'SOFTWARE') FOR USE WITH THE PRODUCT IN WHICH IT WAS INSTALLED. YOU ARE AGREEING TO BECOME BOUND BY THE TERMS OF THIS AGREEMENT. IF YOU DO NOT AGREE TO THE TERMS OF THIS AGREEMENT, DO NOT USE THIS PRODUCT. PROMPTLY RETURN THE PRODUCT TO THE PLACE WHERE YOU OBTAINED IT FOR A FULL REFUND.

The installed software as supplied by the Company is licensed, not sold, to you for use only under the terms of this license, and the Company reserves all rights not expressly granted to you. You own the product or other media on or in which the Software is originally or subsequently recorded or fixed, but the Company retains ownership of all copies of the Software itself.

1. License: This license allows you to use the Software for internal purposes only on a single product in which it was installed.
2. Restrictions: (a) You may not market, distribute or transfer copies of the Software to others or electronically transfer or duplicate the software. YOU MAY NOT REVERSE ENGINEER, DECOMPILE, DISASSEMBLE, MODIFY, ADAPT, TRANSLATE, RENT, LEASE OR LOAN THE SOFTWARE OR CREATE DERIVATIVE WORKS BASED ON THE SOFTWARE OR ANY ACCOMPANYING WRITTEN MATERIALS. (b) The Software and the accompanying written materials are copy-righted. Unauthorized copying of the Software, including portions thereof or the written materials, is expressly forbidden. (c) You understand that the Company may update or revise the Software and in so doing incurs no obligation to furnish such updates to you.
3. Limited Warranty: The Company does not warrant that the operation of the Software will meet your requirements or operate free from error. The Company DISCLAIMS ALL OTHER WARRANTIES AND CONDITIONS EITHER EXPRESS OR IMPLIED, INCLUDING THE WARRANTIES OF MERCHANTABILITY, FITNESS FOR A PARTICULAR PURPOSE AND NON-INFRINGEMENT OF THIRD PARTY RIGHTS.
4. Limited Liability: The liability of the Company for any claims arising out of this License based upon the Software, regardless of the form of action, shall not exceed the greater of the license fee for the Software

## **OPERATION**

### **SYSTEM POWER**

The BP-2002 belt pack receives power externally, in one of two ways:

- Via the intercom channel.
- Via the local-power (pin 2) of the intercom channel connector

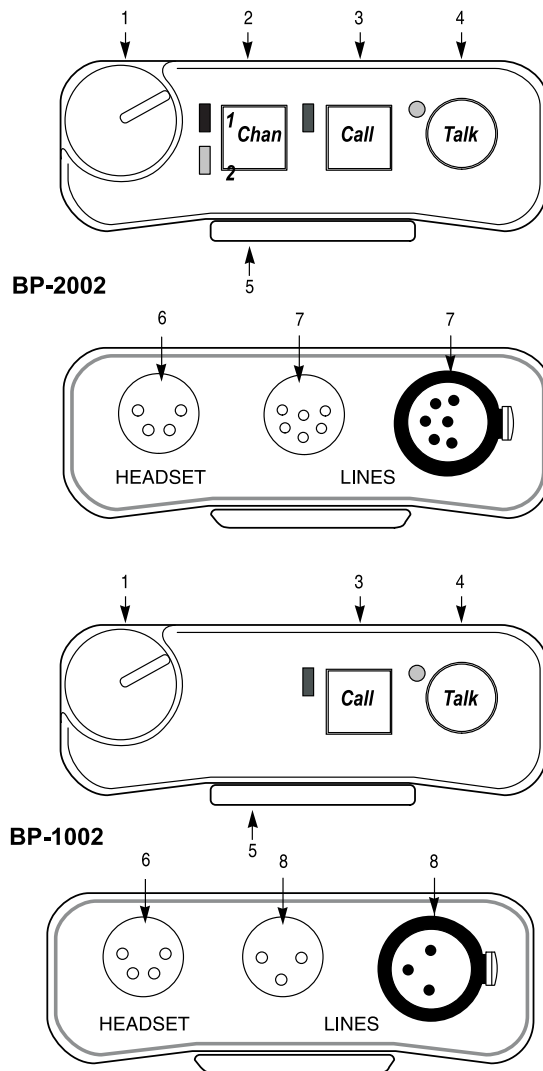
The BP-1002 belt pack receives power externally, via the intercom channel.

Both the BP-1002 and BP-2002 will pass system power through to subsequent belt packs that are “daisy chained” together.

### **INITIAL BP-1002/BP-2002 SETUP**

The channel termination is initially set for balanced operation, which is compatible with other Audiocom® equipment. If the unit is going to be connected to Clear-Com equipment, one switch and several jumpers must be changed as described in the section on Clear-Com Setup in this manual.

The headset microphone type is initially set for single-ended dynamic operation. To change the microphone type to balanced dynamic, refer to Table 2 for the position of JP9.



**Figure 1. BP-2002 & BP-1002 Connections and Controls**

## EXTERNAL CONNECTIONS & CONTROLS

**NOTE:** The numbers refer to the callouts in Figure 1.

1. **VOLUME CONTROL:** Use this control to adjust the headset listen level.
2. **CHAN BUTTON AND INDICATORS:** The Chan button (only on the BP-2002) allows the user to select which intercom channel is active. The yellow indicator next to the 1 or 2 lights to show the active channel. Press the Chan button to change the channel selection, the yellow indicator for that channel will light.
3. **CALL BUTTON AND INDICATOR:** The Call function allows the user to send or receive signals to other devices on the intercom channel selected. The Call button operates in two ways:

*Call receive:* When there is an incoming call signal, the indicator is red. (If Audible Call Alert is enabled, incoming calls will cause beeps in the headset.) On the BP-2002, calls can be received on the selected channel only.

*Call send:* To send a call signal to all stations on a channel, press and hold the Call button until a verbal response is received. The indicator will glow red. On the BP-2002, calls can be sent on the selected channel only.

4. **TALK BUTTON AND INDICATOR:** The Talk button activates the headset microphone and operates in two ways:

Latched Mode:

Tap the button once to talk. The indicator will glow green. Tap the button again when finished with a conversation.

Momentary Mode:

Press and hold the button to talk momentarily. Release the button when finished talking.

**NOTE:**On the BP-2002, if no headset is connected when the Talk button is pressed, the Talk button will have the same function as the Chan button.

5. **SIDETONE CONTROL:** When using a headset, this control adjusts your own voice level heard in the headphones. To adjust the level, tap the Talk button once to turn on the headset microphone. Then, use a small flat-blade screwdriver to increase or decrease your voice level while talking into the microphone. (This control is accessible by removing one screw of belt clip.)
6. **HEADSET CONNECTOR:** This connector accepts a four-wire Telex® boom-microphone headset.
7. **INTERCOM CHANNEL CONNECTORS:** On the BP-2002, intercom channels are connected via a pair of 6-pin connectors (one male and one female). The male and female connectors are wired together in parallel, providing a “loop through” at each connector pin. Use one connector to connect to the intercom channel. Use the other connector to “daisy chain” a cable to the next belt pack or other station on the channel.



**Local Power Input (BP-2002 only)**

Normally the BP-2002 is powered from the intercom system and will turn on with the intercom system. The BP-2002 belt pack may also be powered from an optional power supply (18-30 VDC) connected between pin 2 (+) and pin 1 (-) of the intercom channel connector.

8. **INTERCOM CHANNEL CONNECTORS:** On the BP-1002, the intercom channel is connected via a pair of 3-pin connectors (one male and one female). The male and female connectors are wired together in parallel, providing a “loop through” at each connector pin. Use one connector to connect to the intercom channel. Use the other connector to “daisy chain” a cable to the next belt pack or other station on the channel.

**OPERATING MODES**

The microprocessor within the BP-1002/BP-2002 controls four modes of operation that affects the Microphone Kill and Audible Call Alert features.

<b>MODE (BEEPS)</b>	<b>MIC KILL</b>	<b>AUDIBLE CALL ALERT</b>
1	Disabled	Disabled
2 (Default)	Enabled	Disabled
3	Disabled	Enabled
4	Enabled	Enabled

***Table 1. Operating Modes***

**Changing Modes of Operation:**

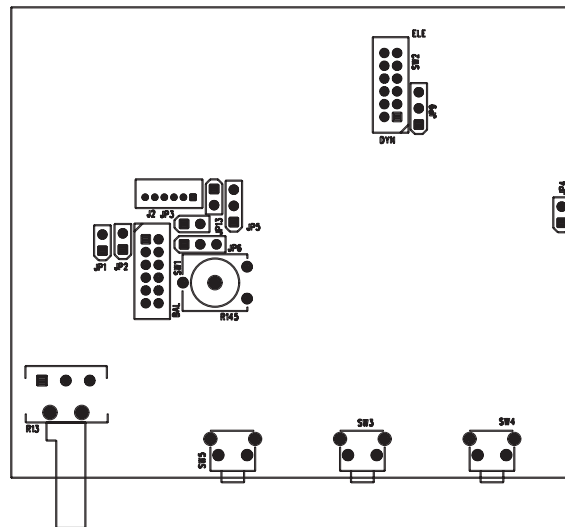
Perform the following steps to change the mode of operation.

1. Both the Talk and Call indicators should be off.
2. Press and hold the Talk key, then press and hold the Call key, then release both keys. The Call indicator should now glow red.  
(The number of beeps heard in the headset indicates the current mode of operation.)
3. Press the Call key to change to the next mode of operation. Each press of the Call key will cause the BP-1002/BP-2002 to change to the next mode of operation.
4. When the desired mode is reached, press the Talk key to select that mode and exit the mode changing function. (Beeps will be heard in the headset when the mode changing function is exited. The number of beeps heard indicates the selected mode of operation.)

**NOTE:** Each time the intercom system power is turned on, the beltpack will reset to the default mode of operation (Mode 2).

## INTERNAL SWITCHES, JUMPERS AND ADJUSTMENTS

There are several internal switches, jumpers and an adjustment that affect operation. These are described below. To gain access to the switches, jumpers and the adjustment, disconnect all power and line connections. Remove two screws from the top of each side and two screws from bottom of each side. Switch, jumper and adjustment locations are shown in Figure 2.



**Figure 2. Internal Switches, Jumpers and Adjustments. Note, if you have 9350-7749-000 board, figure 4 on page 19.**

**NOTE:** Figure 2 shows a BP-2002 with the switches and jumpers in their factory default positions (referenced in Table 2).

The SIDETONE adjustment is also accessible behind the screw that holds the belt clip (callout 5 in Figure 1).

The functions of the internal switches and jumpers are described in Table 3.

**NOTE:** On the BP-1002, jumper JP6 must always have pins 2 and 3 shorted.

**Side Tone Adjustment (R145)**

The side tone adjustment is accessible either internally (refer to Figure 2) or by removing the belt clip mounting screw (callout 5 in Figure 1).

To adjust the level of your own voice heard in the headphones, tap the Talk button once to turn on the headset microphone. Then, use a small flat-blade screwdriver to increase or decrease your voice level while talking into the microphone.

**Clear-Com Setup**

Make the following switch and jumper changes when the belt pack is used with Clear-Com equipment:

**BP-2002**

1. SW1 must be placed in the UNBAL position.
2. JP4 must have pins 1 and 2 shorted (U position).
3. JP5 jumper must be removed and placed on JP2.
4. JP2 must have pins 1 and 2 shorted (using jumper from JP5).
5. JP1 must have pins 1 and 2 shorted.

**BP-1002**

1. SW1 must be placed in the UNBAL position.
2. JP4 must have pins 1 and 2 shorted (U position).
3. JP6, JP5 must have pins 2 and 3 shorted at all times.

Product	Default Jumper Settings
BP-1002	Shorting across Pins 1 and 2: JP13  Shorting across Pins 2 and 3: JP5, JP6 and JP9  Not Populated: JP1, JP2, and JP3  Populated on Pin 1 Only: JP4
BP-2002	Shorting across Pins 1 and 2: JP9 and JP13  Shorting across Pins 2 and 3: JP5 and JP6  Not Populated: JP3  Populated on Pin 1 Only: JP1, JP2, and JP4

**Table 2. Default Settings.** If you are using the 000 board, see page 19 for the default settings.

**Table 3. Internal Switches and Jumpers**

Jumper/Switch Number	Jumper or Switch Function	Default Setting
SW3 ^	Electret/Dynamic Microphone Select (Must be set to Dynamic when JP9 functions are designed)	Dynamic
JP9 ^ ^	Balanced/Single-ended Dynamic Mic (SW1 must be set to Dynamic) Single-ended Mic: Pins 1&2 shorted	Pins 1&2 shorted
^	Balanced Mic: Pins 2&3 shorted	
JP6 ^ ^	Power Select Channel One Power: Pins 2&3 shorted (On BP-1002, pins 2&3 always shorted)	Pins 2&3 shorted
^	Channel Two Power: Pins 1&2 shorted	
JP5	Power Select	Pins 2&3 shorted
^	Channel One Power: Pins 2&3 shorted (On BP-1002, Pins 2&3 always shorted.)	
^	Channel Two Power: Pins 1&2 Shorted	
^	(Must be set for same channel as JP6 for proper power operation in Audiocom® mode on BP-2002) (Must be used in conjunction with SW1)	
SW1	Clear-Com / Audiocom® Operation	Balanced
^ ^	Unbalanced / Balanced Line (Must be used in conjunction with JP4, JP5, JP2, and JP1)	
JP4	Clear-Com / Audiocom® Operation Pins 1&2 shorted: UNBAL (Clear-Com)	Jumper on one pin only
JP2 ^	DC Call Detect (Clear-Com operation only, not used in Audiocom® mode) BP-2002 only Disabled: No pins jumpered	No jumper present
^ ^	Enabled: Pins 1&2 shorted (To enable, use jumper from JP5)	
JP1 ^ ^	DC Call Detect (Clear-Com operation only, not used in Audiocom® mode) BP-2002 only Disabled: No pins jumpered Enabled: Pins 1&2 shorted	Jumper on one pin only
JP13	For RTS™ use only	Must be installed

**Note:** In case of local power use, install a jumper on pins 2 & 3 of U6

## **CONNECTOR PIN CONFIGURATIONS**

### **Headset Connector**

Type: XLR-4M (callout 6 in Figure 1)

- Pin 1 Headset microphone low
- Pin 2 Headset microphone high
- Pin 3 Headphone high
- Pin 4 Headphone low

### **Intercom Channel Connectors**

#### **BP-1002**

Type: One XLR-3M and XLR-3F pair (callout 8 in Figure 1)

Audiocom® Mode (Internal switch SW1 and jumpers JP4, JP5, JP2 and JP1 set to BAL position)

- Pin 1 Common
- Pin 2 Intercom audio low and +24 VDC input
- Pin 3 Intercom audio high and +24 VDC input

Clear-Com Mode (Internal switch SW1 and jumpers JP4, JP5, JP2 and JP1 set to UNBAL position)

- Pin 1 Common
- Pin 2 +30 VDC input
- Pin 3 Intercom audio/call signal

**BP-2002**

Type: One XLR-6M and XLR-6F pair (callout 7 in Figure 1)

Audiocom® Mode (Internal switch SW1 and jumpers JP4, JP5, JP2 and JP1 set to BAL position)

Pin 1	Common
Pin 2	Local power (+24 VDC)
Pin 3	Channel A intercom audio low and +24 VDC input
Pin 4	Channel A intercom audio high and +24 VDC input
Pin 5	Channel B intercom audio low and +24 VDC input
Pin 6	Channel B intercom audio high and +24 VDC input

Clear-Com Mode (Internal switch SW1 and jumpers JP4, JP5, JP2 and JP1 set to UNBAL position)

Pin 1	Common
Pin 2	Local power (14 to 30 VDC)
Pin 3	Channel A +30 VDC input
Pin 4	Channel A intercom audio/call signal
Pin 5	Channel B +30 VDC input
Pin 6	Channel B intercom audio/call signal

## SPECIFICATIONS

### GENERAL:

#### Power Requirements:

Channel supplied: 24 VDC nominal, 45 to 70 mA  
Local-power: (BP-2000 only) 24 VDC nominal (18 to 30 VDC), 45 to 70 mA

#### Environmental Requirements:

Storage: -20°C to 80°C; 0% to 95% humidity,  
non-condensing  
Operating: -15°C to 60°C; 0% to 95% humidity,  
non-condensing

Dimensions: 5.0" (127 mm) H x 3.5" (88.9 mm) W x 1.8"  
(45.7 mm) D

Weight: 1.5 pounds (0.68 kg)

### INTERFACE REQUIREMENTS:

#### Headset:

50 to 200 ohm dynamic microphone  
150 to 600 ohm headphones

#### Balanced Intercom Channel:

Output Level: 1 Vrms nominal  
Input Impedance: 300 ohm  $\pm 5\%$   
Bridging Impedance: greater than 10,000 ohm  
Call Signalling:

Send: 20 kHz  $\pm 100$  Hz, 0.5 Vrms  $\pm 10\%$

Receive: 20 kHz  $\pm 800$  Hz, 100 mVrms

#### Mic-Off Frequency:

Detect: 24 kHz  $\pm 800$  Hz, 100 mVrms

Noise Contribution: less than -60 dB on the line



Unbalanced Intercom Channel:

Output Level: 480 mVrms  $\pm$ 10%

Input Impedance: 200 ohm  $\pm$ 5%

Bridging Impedance: greater than 10,000 ohm

Call Signalling:

Send: 12  $\pm$ 3 VDC

Receive: 4 VDC minimum

**HEADPHONE AMPLIFIER:**

Voltage Gain:

20  $\pm$ 3 dB from the line

Maximum Output:

60 mW into 150 ohm

Frequency Response:

200 Hz to 8 kHz with no more than 4 dB deviation

Audible Alert:

1 kHz, at the headset

Total Harmonic Distortion:

Less than 2% at 50 mW from the line

Sidetone:

20 dB minimum range, adjustable

**DYNAMIC MICROPHONE AMPLIFIER:**

Voltage Gain:

Mic to Channel; 45  $\pm$ 3 dB, before limiting

Mic to Headphone; adjustable, 65 dB range into 150 ohm

Frequency Response:

200 Hz to 8 kHz +1/-3dB

Total Harmonic Distortion:

Less than 1% at Channel output at 1 kHz

**ELECTRET MICROPHONE AMPLIFIER:**

Voltage Gain:

Mic to Channel; 24  $\pm$ 3 dB, before limiting

Mic to Headphone; adjustable, 45 dB  $\pm$ 10% into 150ohm

Frequency Response:

200 Hz to 8 kHz +1/-3dB

Total Harmonic Distortion:

Less than 1% at Channel output

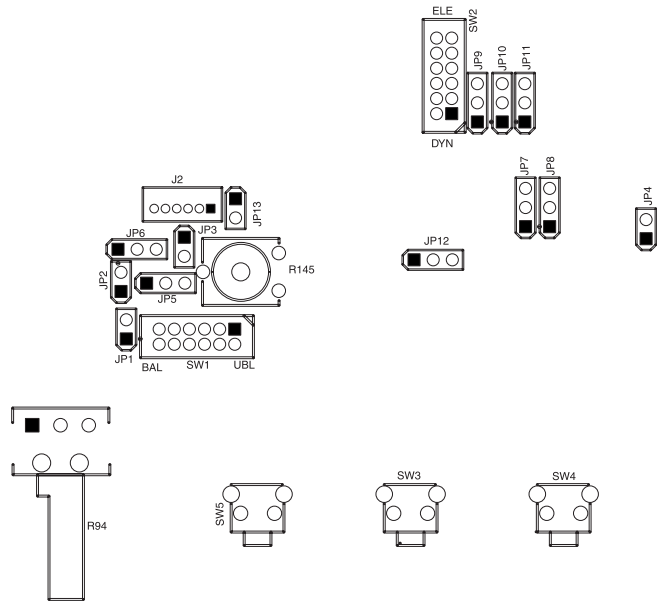


Figure 4. Board Number 9040-7740-000.

Product	Default Jumper Settings
BP-1002	<p>Shorting across Pins 1 and 2: JP7, JP8, JP10, JP11, JP12, and JP13</p> <p>Shorting across Pins 2 and 3: JP5, JP6 and JP9</p> <p>Not Populated: JP1, JP2, and JP3</p> <p>Populated on Pin 1 Only: JP4</p>
BP-2002	<p>Shorting across Pins 1 and 2: JP7, JP8, JP9, JP10, JP11, JP12, and JP13</p> <p>Shorting across Pins 2 and 3: JP5 and JP6</p> <p>Not Populated: JP3</p> <p>Populated on Pin 1 Only: JP1, JP2, and JP4</p>

**Default Settings**

## **APPENDIX A OPTIONAL FOOTBALL MODIFICATIONS**

### **GENERAL DESCRIPTION**

In Audiocom® Intercom Systems, the Mic-Kill feature is used to turn off any activated microphones on a selected channel. The Mic-Kill feature is activated when the beltpack receives a 24 kHz signal from the channel. In some applications the Mic-Kill and Call signal features are not desired and need to be disabled.

### **ELIMINATING MIC-KILL AND CALL SIGNAL**

#### **CAUTION**

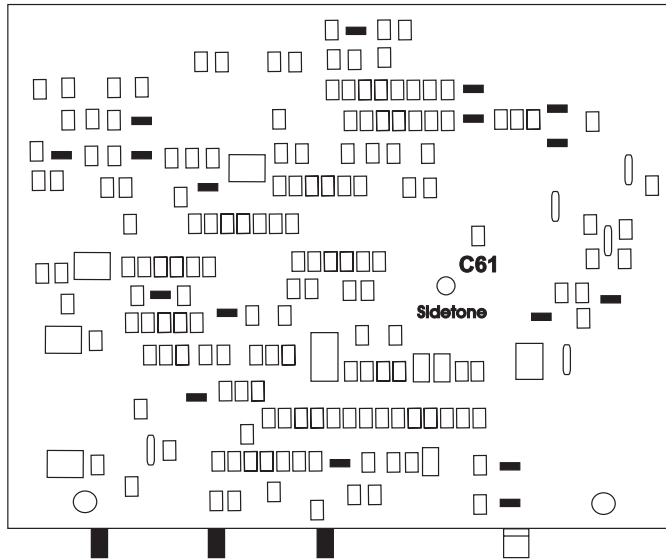
TO PREVENT DAMAGE TO THE EQUIPMENT, THESE MODIFICATIONS SHOULD ONLY BE MADE BY QUALIFIED TECHNICIANS.

If desired, the Mic-Kill and Call signal features can be disabled in the BP-2002/BP-1002 by removing a surface-mounted capacitor from the printed circuit board. Perform the following:

1. Before making changes to the printed circuit board, disconnect all power and line connections from the beltpack.
2. Refer to Figure 3 and locate C61 on the underside of the printed circuit board.
3. Remove capacitor C61 from the printed circuit board.

### **RESTORING MIC-KILL AND CALL SIGNAL**

To restore the Mic-Kill and Call signal features, replace C61 with Telex® part number 102879-218, 1500 pF, 50V capacitor.



**Figure 3. Printed Circuit Board**

## **FACTORY SERVICE**

All equipment returned for repair must be accompanied by documentation stating your return address, telephone number and proof of date of purchase, along with a description of the problem. In lieu of this, you may obtain a Return Authorization form from our Customer Service Department.

Customer Service Department  
Telex Communications, Inc.  
12000 Portland Avenue South  
Burnsville, Minnesota 55337 U.S.A.  
Telephone: (800) 392-3497  
Fax: (800) 323-0498

Return equipment to:

Service Department  
Telex Communications, Inc.  
West 1st Street  
Blue Earth, Minnesota 56013 U.S.A.

**WARRANTY REPAIRS** - If in warranty, no charge will be made for the repairs. Equipment being returned for warranty repair must be sent prepaid and will be returned prepaid.

**NON-WARRANTY REPAIRS** - Equipment that is not under warranty must be sent prepaid to Telex. If requested, an estimate of repair costs will be issued prior to service. Once your approval for repair, and repair of equipment is completed, the equipment will be returned on a collect basis. Collect charges may be avoided by sending a signed check for payment in full along with your signed estimate approval form (the estimate includes the shipping charge).

**TELEX**<sup>®</sup>

TELEX COMMUNICATIONS, INC. • 12000 Portland Avenue South, Burnsville, MN 55337 USA