

Telex®

TELEX COMMUNICATIONS, INC.

8601 East Cornhusker Highway, Lincoln, NE 68505

ALP-600

TELESCOPING ANTENNA MAST

Order No. 878897-1

PN 801544

INSTRUCTION SHEET

General Description

The ALP-600 Telescoping Antenna Mast is a four section, light weight, clear anodized, aluminum mast.

The base section diameter is 1 1/4" reducing to 7/8" diameter at the top section. All the sections are captive with cast black bushings.

SPECIFICATIONS

1st Sections Dimensions	1 1/4" dia. x 20 3/4"
2nd Section Dimensions	1 1/8 dia. x 22"
3rd Section Dimensions	1" dia. x 23 1/4"
4th Section Dimensions	7/8" dia. x 25"
Overall Extended Length	90 1/4"
Closed Length	25 1/4"

Mast Extension

Extend top section first. Turn knob on bushing to unlock. Slide the captive section until full extension is achieved. Attach antennas to ALP-600 telescoping antenna mast now, see Figure 1. Unlock the next section and extend fully. Repeat this procedure until antenna mast is completely extended and ready for insertion into the mounting bracket, see Figure 2.

Mast Dismantlement

Remove the ALP-600 Telescoping Mast from the mounting bracket. While holding the second section of mast, unlock bushing and slide section into base section. Repeat procedure until only the last section is extended. Remove antennas from mast, depress into base. Lock all bushings when mast is completely broke down, see Figure 3.

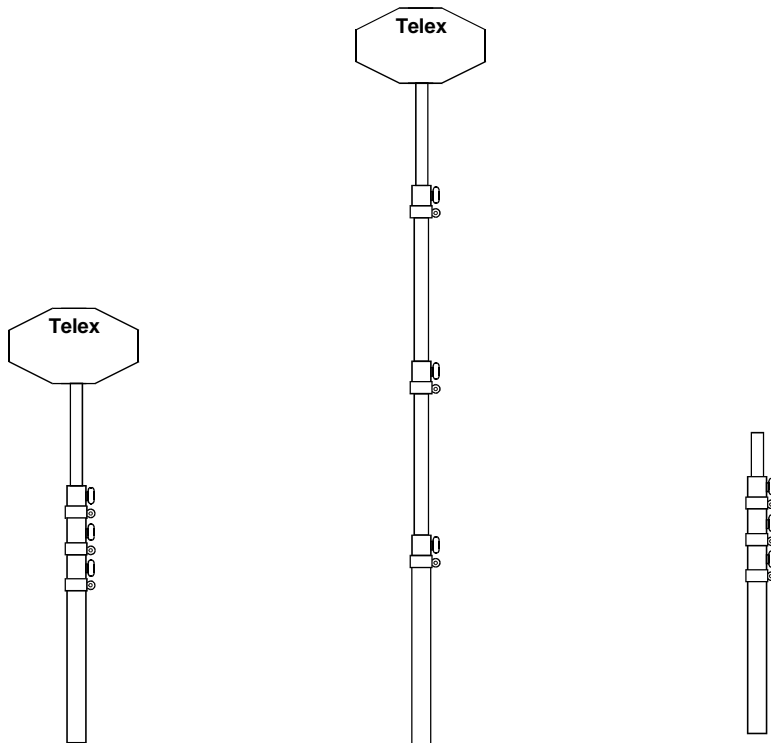


Figure 1

Figure 2

Figure 3