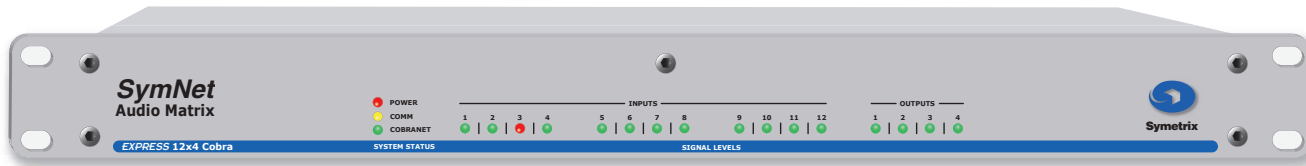


Introducing the next generation
SymNet technology ...

SymNet™ *Express*



Symetrix, designers of the SymNet Audio Matrix, a fully developed DSP audio backbone, responds to the demands of sound contractors worldwide by launching a new series of hardware engineered to advance the SymNet technology.

Introducing SymNet Express. This new audio DSP is available in two basic hardware versions – Express and Express Cobra. Each has selectable line/microphone inputs for flexible connectivity. Each is individually addressable over Ethernet for network control. Each supports a redundant power supply* for building-code-friendly sound systems. Both are easily updateable. And as you would expect, Express Cobra includes onboard CobraNet™, Peak Audio's industry standard protocol for digital audio networking.

The SymNet family, with the addition of Express, now includes fifteen core products. Continuing the tradition, Express plugs the power of SymNet into 100MHz SHARC processors to set a new level in DSP value. This exciting new series

of audio processors is ready to be used in sound system applications from neighborhood churches to corporate boardrooms. From hotel meeting spaces to lounges, gymnasiums to courtrooms. Installed sound professionals around the world have come to count on the SymNet Audio Matrix for reliability and sonic purity. Now you have seven more reasons to turn to Symetrix.

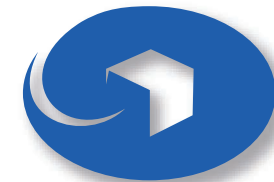
The flexibility to adapt to your project's requirements and budget is what the Express series is all about. If your project is input heavy, i.e., a boardroom automixer, a rack of BGM** sources, then consider one of the 12x4's. For applications needing lots of outputs, multi-band speaker management, multi-zone paging, etc., one of the Express 4x12s may be the ticket. And of course, the standard 8x8 form factor is available in two configurations, one with and one without CobraNet. Last but not least, choose the Express Cobra 4x4 for applications requiring four or fewer remote inputs and/or outputs.

* Redundant supply is optional.

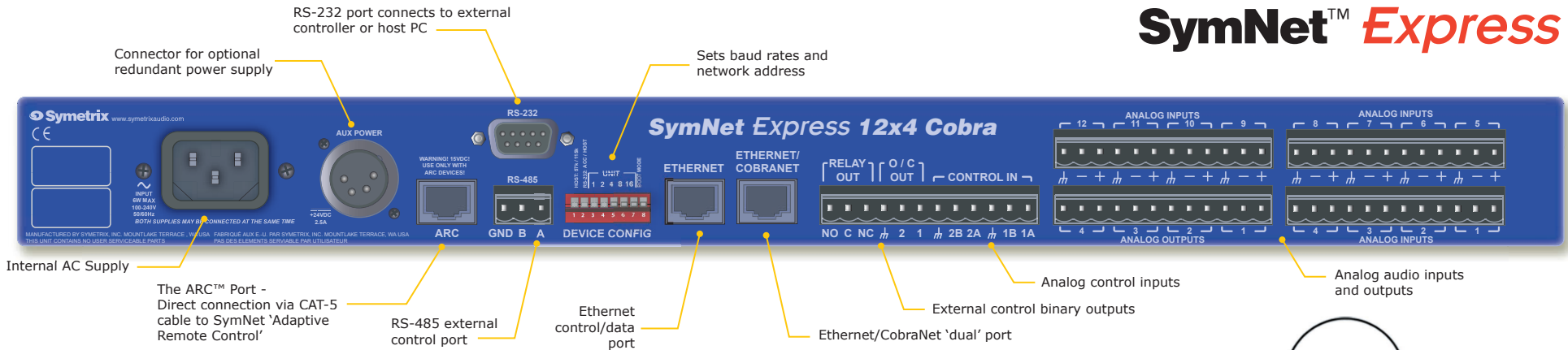
** Originally, BGM stood for Bob, Gomer, and Mary, pioneers in the field of pre-recorded programs. In later years it has fallen into common parlance as the more generic Back Ground Music.

Express 12x4 Cobra
Express 4x12 Cobra
Express 8x8 Cobra
Express 4x4 Cobra
Express 12x4
Express 4x12
Express 8x8

- Field Upgradeable
- Optional CobraNet™
- Externally Controllable
- Flexible DSP Architecture
- Redundant Power Supply*
- Onboard Ethernet Interface
- Comprehensive Processing Toolkit



Symetrix



Express (without CobraNet) is intended for auditoriums, boardrooms, churches, courtrooms, hotels – any stand-alone application where a single DSP unit handles everything between the microphones and the amplifiers. Your choices are 12x4, 4x12, and 8x8.

Express Cobra provides a cost-effective tool to network audio between amplifiers, powered speakers, and the growing legion of products supporting the CobraNet audio standard. Express Cobra units can freely exchange up to 8 channels of bi-directional audio on a single CAT5 cable with other Express Cobras, CobraLink-equipped SymNet rings, or third party CobraNet-compatible gear located in distant areas of a venue. Choices are 12x4, 4x12, 8x8, and 4x4.

Network Control of all Express models is via 10/100 Ethernet, each unit having a unique IP address. When integrated into a LAN, complete Express control is available from anywhere on the network.

External control of SymNet Express is accomplished by connecting rotary encoders, contact closures, analog pots or our own ARC (Adaptive Remote Control) wall panels. Express also directly interfaces with touch screen technologies from AMX and Crestron.

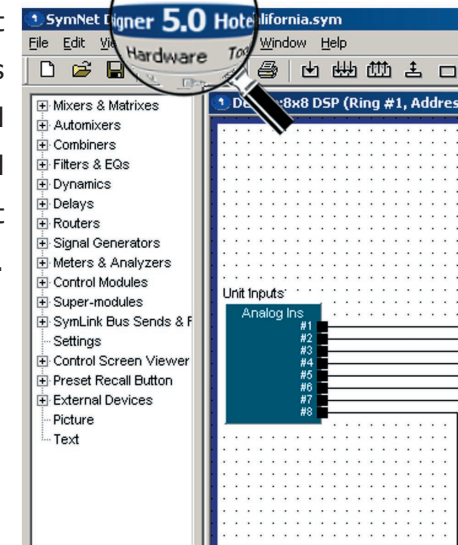
What about security? Express supports multi-tiered access to user control screens while protecting hardware from unauthorized access.

SymNet Designer application software works across the SymNet family of hardware products providing over 300 DSP modules and more than 50 control modules. Our design team constantly adds features, and as they do, we post them online. They're yours for the taking.

It's called Express because it's fast to install, connect, control, and update. Symetrix brings its considerable expertise in DSP design to Express to provide an extraordinary value in audio signal processing.

Come on, catch the Express.

SymNet Express is configured and controlled from SymNet Designer™.



© 2001-2004, Symetrix, Inc. All rights reserved.

Choose the Express configuration that meets your requirements and budget ...

| | Analog In | Analog Out | Cobra In/Out | Analog Control Inputs | Relay Output | Open Collector Outputs | RS-232 Host/Control Port | Ethernet Control Port | RS-485 Control Port | Optional Redundant Power Supply |
|--------------------|-----------|------------|--------------|-----------------------|--------------|------------------------|--------------------------|-----------------------|---------------------|---------------------------------|
| Express 12x4 | 12 | 4 | - | 2 | 1 | 2 | yes | yes | yes | yes |
| Express 4x12 | 4 | 12 | - | 2 | 1 | 2 | yes | yes | yes | yes |
| Express 8x8 | 8 | 8 | - | 2 | 1 | 2 | yes | yes | yes | yes |
| Express 12x4 Cobra | 12 | 4 | 8/8 | 2 | 1 | 2 | yes | yes | yes | yes |
| Express 4x12 Cobra | 4 | 12 | 8/8 | 2 | 1 | 2 | yes | yes | yes | yes |
| Express 8x8 Cobra | 8 | 8 | 8/8 | 2 | 1 | 2 | yes | yes | yes | yes |
| Express 4x4 Cobra | 4 | 4 | 8/8 | 2 | 1 | 2 | yes | yes | yes | yes |