

lucid

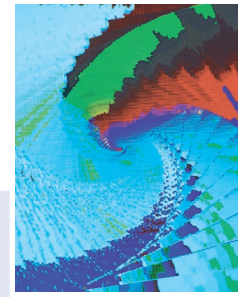
AESx4, CLKx6, GENx6 & GENx6-96 Digital Audio Distribution Units

Wouldn't it be great if all your gear would play nice? If they'd just make friends with the box next door, plus those three across the room. Wouldn't life be simpler if every time some new digital toy turned your head, it didn't require a studio remodel in the morning?

Lucid is here to help. With four new distribution specialists, you can circulate audio and sync all around your studio, no questions asked. Simplest of the bunch, the AESx4 and the CLKx6 take the audio or clock at their inputs and distribute it to multiple, same-format destinations. The AESx4 receives either Word Clock or AES audio and delivers it to four AES-connected units. The CLKx6 passes sync information, in Word Clock or Superclock format, to 6 parallel outputs.

Two additional units come with a few more tricks. The GENx6 and GENx6-96 can distribute or generate sync information. They route Word Clock or Superclock to six BNC outs. With the flip of a switch they operate as a stand-alone clock source, generating Word Clock or Superclock at 44.1 kHz or 48 kHz. The GENx6-96 can generate or distribute clock at 88.2 kHz and 96 kHz rates as well as output Word Clock or Superclock simultaneously by switching each of its outputs individually.

Expand your studio without fear of gear misbehavior, using digital distributors from Lucid.



KEY FEATURES

AESx4 Distribution Amplifier

- 1 Word Clock and 1 AES3 input to 4 parallel AES3 outputs
- Supports all AES3 audio or Word Clock data using 110 ohm line drivers

CLKx6 Audio Clock Distribution Amplifier

- Distributes Word Clock or Superclock to 6 BNC outputs

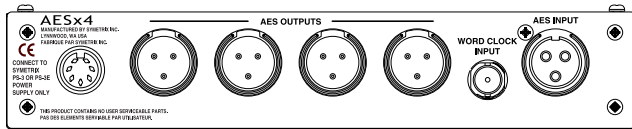
GENx6 Word/Super Clock Generator

- Generates or distributes Word Clock or Superclock
- Selectable internal 44.1 or 48 kHz
- Selectable external AES11, Word Clock, or Superclock input

GENx6-96 Word/Super Clock Generator

- Generates or distributes Word Clock or Superclock
- Selectable internal 44.1, 48, 88.2 or 96 kHz
- Selectable external AES11, Word Clock, or Superclock input
- Simultaneous output of Word Clock and Superclock

AESx4 Distribution Amplifier



Performance

- Input impedance: AES: 110 ohm, Word Clock: 75 ohm
- Output impedance: AES: 110 ohm
- External sync range: 32 kHz to 96 kHz

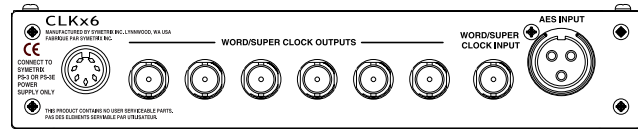
Connectors

- AES input: Balanced XLR
- AES outputs: 4 x XLR
- Word Clock input: BNC
- Power supply: External AC (Lucid PS-3, PS-3E or PS-3J) using 7-pin DIN connector

Physical

- 1/2U Chassis (H x W x D):
1.72 in. x 8.5 in. x 8 in. (4.37 cm x 21.59 cm x 20.32 cm)
- Net Weight: 2.5 lb. (1.1 kg)

CLKx6 Audio Clock Distribution Amplifier



Performance

- Input impedance: AES: 110 ohm, Clock: 75 ohm
- Output impedance: AES: 110 ohm
- External sync range: 32 kHz to 96 kHz

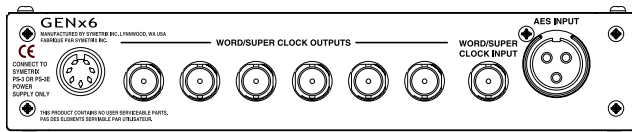
Connectors

- AES input: Balanced XLR
- Word/Super Clock input: BNC
- Word/Super Clock outputs: 6 x BNC
- Power supply: External AC (Lucid PS-3, PS-3E or PS-3J) using 7-pin DIN connector

Physical

- 1/2 U Chassis (H x W x D):
1.72 in. x 8.5 in. x 8 in. (4.37 cm x 21.59 cm x 20.32 cm)
- Net Weight: 2.5 lb. (1.1 kg)

GENx6 Word/Super Clock Generator



Performance

- Input impedance: AES: 110 ohm, Clock: 75 ohm
- Output impedance: AES: 110 ohm
- External sync range: 32 kHz to 96 kHz
- Internal sample rates: 44.1 kHz, 48 kHz

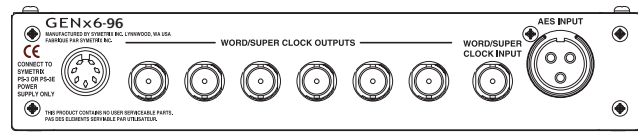
Connectors

- AES input: Balanced XLR-3
- Word/Super Clock input: BNC
- Word/Super clock outputs: 6 x BNC
- Power supply: External AC (Lucid PS-3, PS-3E or PS-3J) using 7-pin DIN connector

Physical

- 1/2 U Chassis (H x W x D):
1.72 in. x 8.5 in. x 8 in. (4.37 cm x 21.59 cm x 20.32 cm)
- Net Weight: 2.5 lb. (1.1 kg)

GENx6-96 Word/Super Clock Generator



Performance

- Input impedance: AES: 110 ohm, Clock: 75 ohm
- Output impedance: AES: 110 ohm
- External sync range: 32 kHz to 96 kHz (internal jumper selects either 32K-48KHz or 44K-96KHz)
- Internal sample rates: 44.1 kHz, 48 kHz, 88.2 kHz and 96 kHz

Connectors

- AES input: Balanced XLR-3
- Word/Super Clock input: BNC
- Word/Super clock outputs: 6 x BNC
- Power supply: External AC (Lucid PS-3, PS-3E or PS-3J) using 7-pin DIN connector

Physical

- 1/2 U Chassis (H x W x D):
1.72 in. x 8.5 in. x 8 in. (4.37 cm x 21.59 cm x 20.32 cm)
- Net Weight: 2.5 lb. (1.1 kg)



Corporate Headquarters
 Lucid
 A division of Symetrix, Inc.
 6408 216th St. SW
 Mountlake Terrace, WA 98043 USA
 Tel: (425) 742.1518
 Fax: (425) 787.3211
 Email: info@lucidaudio.com
 Web: www.lucidaudio.com

European Representation
 World Marketing Associates
 PO Box 100, St. Austell
 Cornwall, PL26 6YU UK
 Tel: +44 (0) 1726 844440
 Fax: +44 (0) 1726 844443

Asian & South American Representation
 International Sales
 1265 Rosecrans Street
 San Diego, CA 92106 USA
 Tel: (619) 224.9429
 Fax: (619) 224.9439

