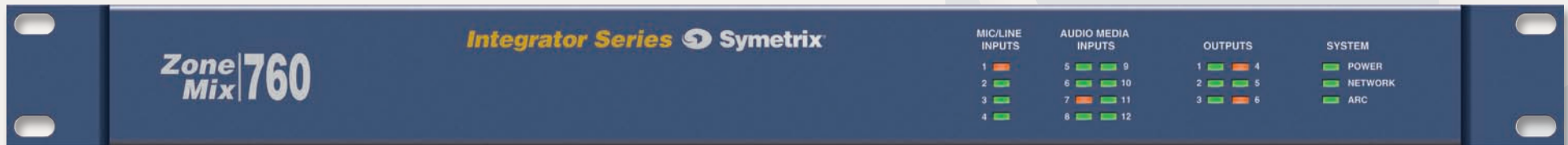


# The NEW **Integrator Series**™

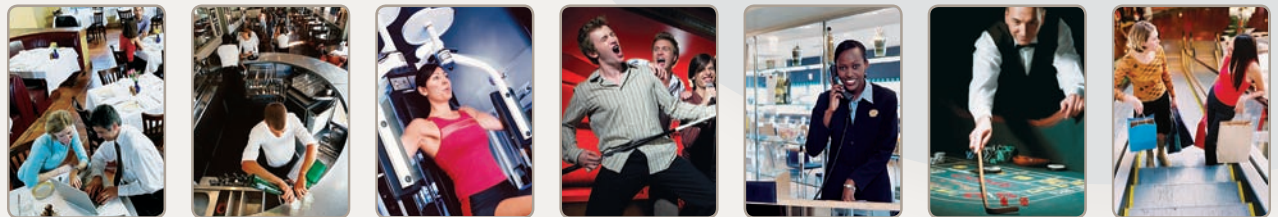
# **Zone Mix|760**



The new **Integrator Series**™  
from Symetrix.

**Affordable, application-specific  
products for installed sound systems.**

The first product in the new Integrator Series is the **Zone Mix 760**, designed specifically to save the integrator both time and money. The 760 includes the optimal feature set and I/O count needed for restaurants, hotels, sports bars, and night clubs at a ground breaking price. Featuring twelve inputs (four microphone, eight stereo line level) and six outputs, it contains microphone pre-amplification, compression, AGC, matrix mixing, paging, feedback elimination, filters and equalization. Setup is easy and efficient with a straightforward Windows® interface connected over Ethernet. The 760 is also compatible with Symetrix RS-485-based Adaptive Remote Control (ARC) Wall Panels for user control. Save time and money with the Zone Mix 760 from Symetrix, the engineering-driven company of signal processing specialists.



## **Zone Mix 760 Applications**

**Paging and music management for:**

- Restaurants
- Sports Bars
- Fitness Clubs
- Night Clubs
- Hotels
- Casinos
- Retail Locations

## **Zone Mix 760 Features**

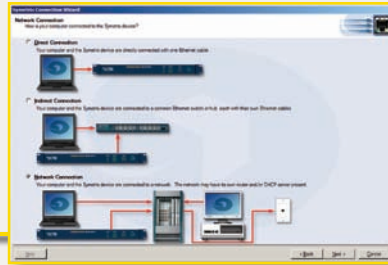
- Paging and music management zone mixer for Restaurants, Sports Bars, Fitness Clubs, Night Clubs, Hotels, Retail Locations, Casinos.
- Four (4) Mic/Line Inputs: Paging from up to three (3) locations plus emergency page.
- Eight (8) Audio Media Inputs for devices such as: CD Player, iPod, Karaoke, Satellite, TV Audio, DVD Audio, Juke Box, DJ Mixer, or Live Mixer.
- Six (6) Outputs: Route audio media inputs, plus paging & emergency paging to as many as six (6) unique locations.
- Wizard-driven software set-up; network ready.

# Engineered by **Symetrix**™

6408 216th St. SW | Mountlake Terrace, WA 98043 | USA | Tel: +1 (425) 778.7728 | Fax: +1 (425) 778.7727 | Web: [www.SymetrixAudio.com](http://www.SymetrixAudio.com)

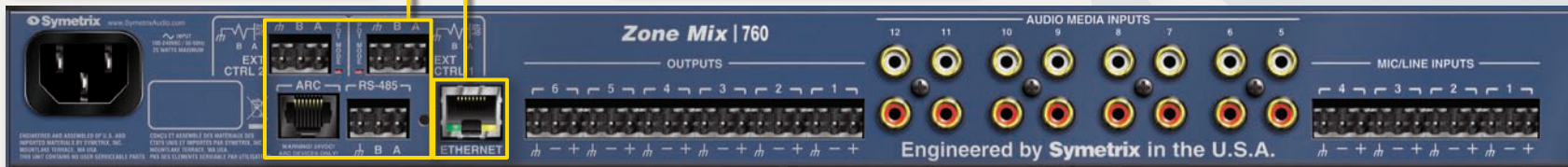


The **External Control Wizard** quickly configures ARC Wall Panels and the External Control inputs.



The **Connection Wizard** effortlessly connects your computer to the Zone Mix 760 hardware saving time and money.

# The NEW Integrator Series Zone Mix | 760



## Specifications

### Inputs

**Number of Inputs:** 12 total (4) switchable mic or line, (8) mono-summed stereo -10 dBV line level.

**Connectors:** Euroblock (line and mic) RCA (Audio Media source)

**Impedance (Euroblock):** > 6.6 k $\Omega$  balanced, > 3.3 k $\Omega$  unbalanced

**Impedance (RCA):** > 20 k $\Omega$  unbalanced

**Max. input line level:** +24 dBu mic/line, +8 dBV RCA

**CMRR:** > 40 dB, typically > 50 dB @ 1 kHz

**Mic/Line gain:** 0 - 54 dB

**Mic EIN:** > -127 dB, 22 Hz - 22 kHz, 100  $\Omega$  source impedance

**Mic Phantom Power:** 20 VDC

### Outputs

**Number of Outputs:** 6

**Connectors:** Euroblock

**Type:** electronically balanced

**Impedance:** 200  $\Omega$  balanced, 100  $\Omega$  unbalanced

**Max Output Level:** +24 dBu

### System

**Sample Rate:** 48 kHz

**Dynamic Range:** > 105 dB A-weighted

**THD+N:** -90 dB typical at +4 dBu, 1 kHz, 0 dB gain

**Frequency Response:** 20 Hz - 20 kHz, +/- 0.5 dB

**Interchannel Crosstalk:** > -80dB typical

**Nominal Operating voltage:** 100 - 240 VAC, 50/60 Hz

**Power Requirements:** 25 Watts

### Physical

**Shipping Weight:** 8.15 lbs. (3.70 kg)

**Dimensions:** 1U (WDH: 48.02 cm x 22.15 cm x 4.37 cm / 18.91 in x 8.72 in x 1.72 in), depth is specified from front panel to back of connectors.

### Environmental

**Ventilation:** Maximum recommended ambient operating temperature is 86° F (30° C).

### Safety and Emissions

UL 60065, cUL 60065, IEC 60065

## Architects and Engineers Specifications

The device shall provide four inputs that are selectable as line or mic level with phantom power; there shall be eight mono-summing line inputs fitted with RCA connectors. All signal processing, mixing and routing functions (including input gains) shall be controllable via software. Audio inputs and outputs shall be accessed via rear panel RCA and Euroblock connectors.

The Graphical User Interface (GUI) software shall be installer programmable using the Windows® XP operating system. Computer connection and control shall be via the devices' rear panel Ethernet connector. The GUI shall provide display and control of all signal processing and configuration functions including, but not limited to: • Input and Output Gain • Highpass Filtering • Parametric Equalization • Compression • Limiting • Automatic Gain Control • Ducking • Feedback Elimination • Signal Routing • Delay • Polarity.

The front panel shall include input and output signal present indicators as well as indicators for POWER, NETWORK, and ARC.

External control shall include preset selection as well as output level control and muting, and shall be via industry-standard CAT5 cable with RJ45 connectors using the optional ARC Wall Panel remote controls. All program memory shall be non-volatile and provide program security should power fail. The device shall provide an on board real time clock to facilitate automatic, timed changing of presets.

Audio conversion shall be 24-bit, 48 kHz. The dynamic range of the processor shall not be lower than 105 dB A-weighted.

The device shall have an IEC power input socket. The unit shall meet UL/CSA safety requirements. The unit shall be RoHS compliant. The chassis shall be constructed of cold rolled steel and aluminum, and mount into a standard 19" 1U EIA rack. **The device shall be a Symetrix model Zone Mix 760.**

© 2007, Symetrix, Inc. All rights reserved. In the interest of continuous product improvement, features, specifications and prices are subject to change without notice.

# Engineered by Symetrix™

6408 216th St. SW | Mountlake Terrace, WA 98043 | USA | Tel: +1 (425) 778.7728 | Fax: +1 (425) 778.7727 | Web: www.SymetrixAudio.com