



Engineered by **Symetrix**

Making Your Job
Easier with Smart
Audio Management
Tools

Studio Matrix™



Homer 7000 • One of 7 Studio Matrix hardware modules

FEATURES

- **May be configured for redundant, fail-safe operation.**
- **Modular architecture minimizes total cost of ownership.**
- **Configured and controlled from a Windows PC.**
- **Slaves to ESE TC89 timecode.**
- **Devices connect via CAT5 cable.**
- **'Built In' signal processing comes at no extra charge.**
- **Scalable from small to very large facilities.**

A New Line
of Broadcast
Products

Symetrix builds on 26 years of audio engineering experience to deliver a line of products focused directly on the needs of broadcasters. If you're looking for a cost effective and comprehensive routing system, the AirTools Studio Matrix is engineered for you.

A flexible and modular digital audio routing system to connect on-air, production, and rack rooms.

THE AIRTOOLS STUDIO MATRIX™ is a powerful, multi-function, DSP-based audio routing system. Modular and scalable, the Studio Matrix consists of several different hardware modules, which connect to give you a flexible routing and signal processing solution tailored to your needs. In

addition to audio routing, the system also provides *EQ, gain, mute, and level* control as well as dynamics functions including *AGC and compression*. Setup is fast and simple using Studio Matrix Designer Software which runs on a PC connected to Studio Matrix hardware. Using standard CAT5 cable for passing audio between rack room and studios, the system performs with a dynamic range in excess of 115 dB.

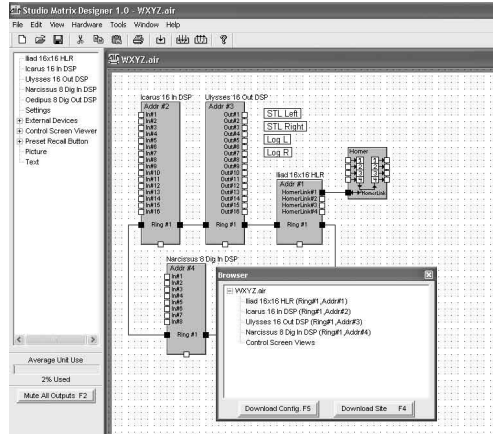
In a typical **STUDIO MATRIX™** equipped facility, on-air and production rooms are fitted with Homer 7000 Breakout boxes each capable of receiving four mono channels from, and sending four mono channels back to, the rack room via CAT5 cable. In the rack room the required Studio Matrix modules are digitally interconnected via SymLink™, our 64 channel digital audio bus. Each rack room module hosts two 66MHz SHARC floating point processors to cover all your signal processing requirements. With the Studio Matrix from AirTools your station's audio will move to a new level of sound quality, flexibility, and reliability.

HARDWARE MODULES

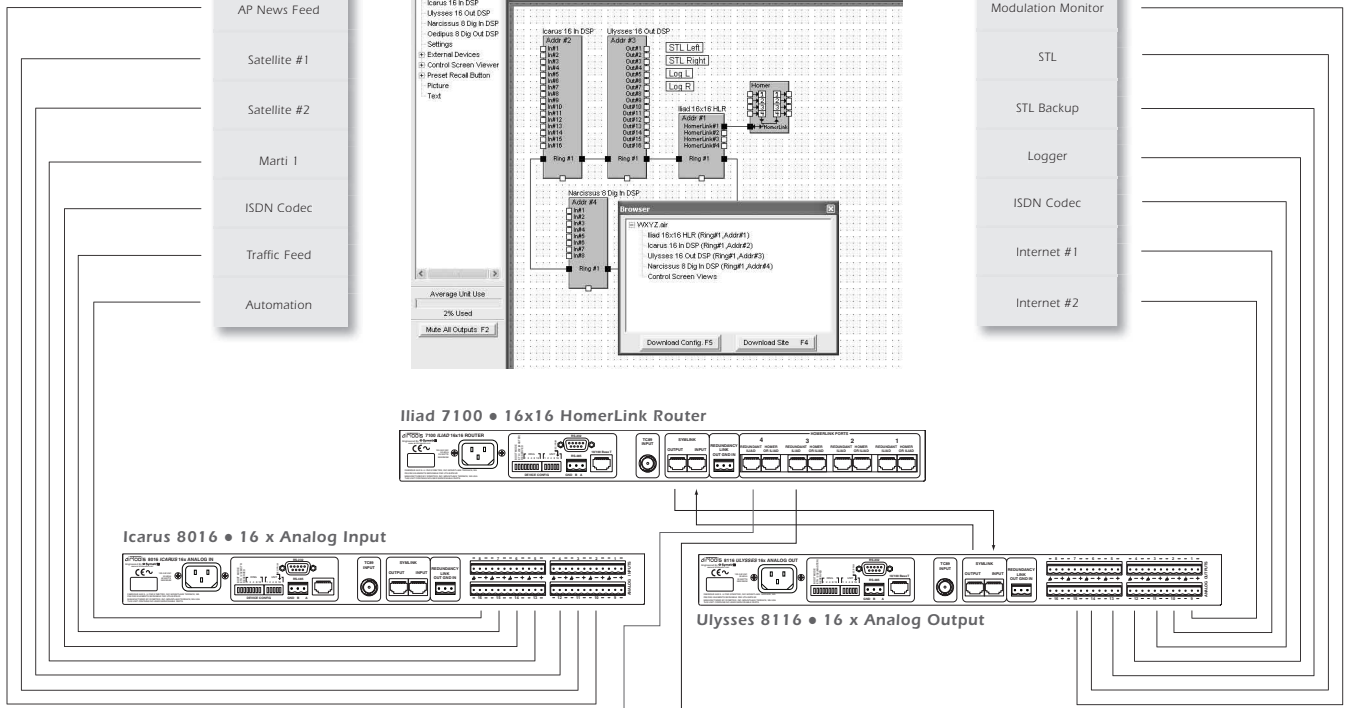
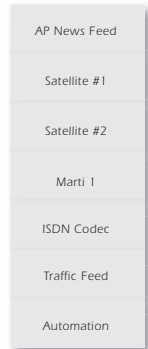
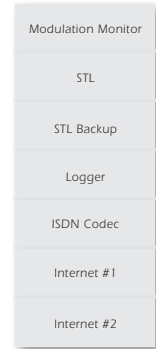
- **HOMER 7000 • 4X4 Studio Breakout**
- **ILIAD 7100 • 16x16 HomerLink Router**
- **ICARUS 8016 • 16x Analog Input**
- **ULYSSES 8116 • 16x Analog Output**
- **NARCISSUS 8208 • 8x Digital In (4xAES-3)**
- **OEDIPUS 8308 • 8x Digital Out (4xAES-3)**
- **CONTROL I/O**

Studio Matrix™

Studio Matrix Designer Software

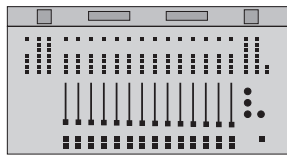
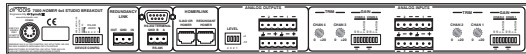


Rack Room



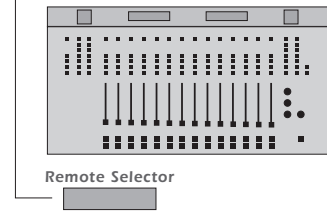
On-Air Studio

Homer 7000
4 x4 Studio Breakout



Production Studio

Homer 7000
4 x4 Studio Breakout

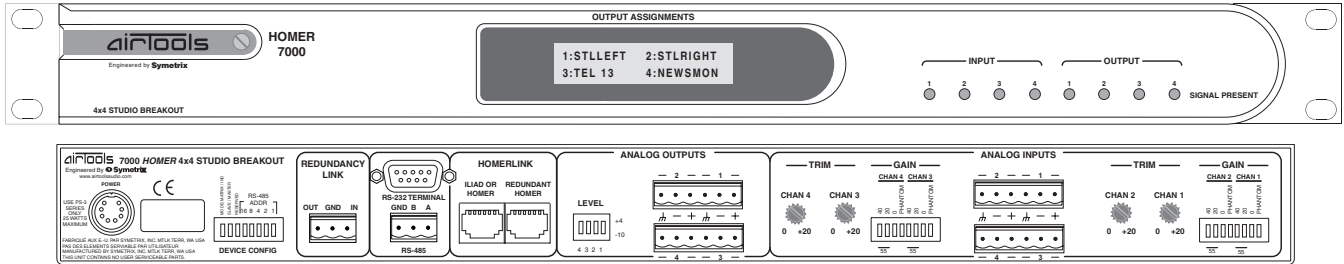


Typical Application

Studio Matrix™

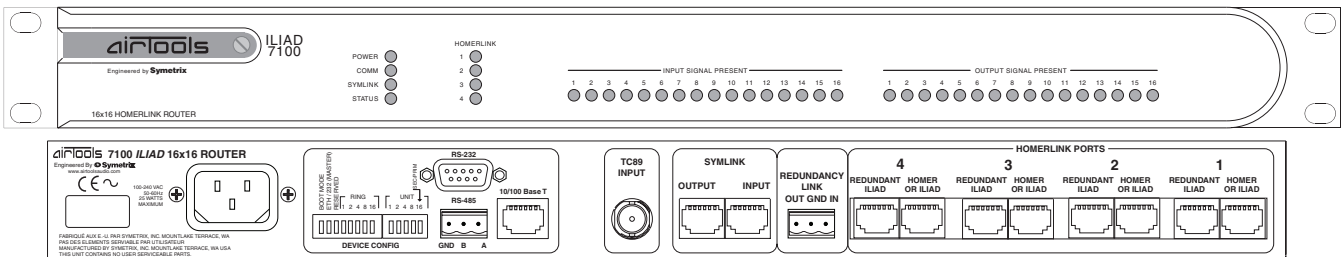
HOMER 7000 • 4x4 Studio Breakout

Homer connects On-Air and Production Studio analog audio to the rack room over CAT5 cable, sending and receiving 4 mono signals in each direction.



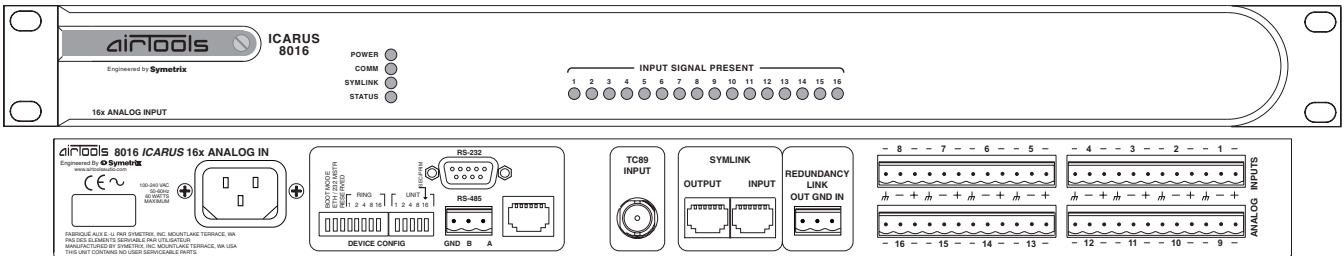
ILIAD 7100 • 16x16 HomerLink Router

Iliad resides in the Master Control Room and is the breakout point in the Studio Matrix ring for up to 4 Homer devices.



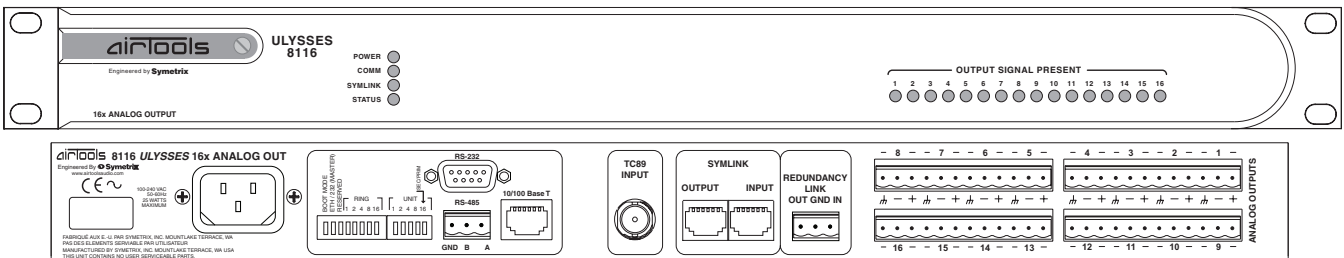
ICARUS 8016 • 16x Analog Input

Icarus resides in the Master Control Room and is a node in the Studio Matrix ring which accepts line level analog audio input.



ULYSSES 8116 • 16x Analog Output

Ulysses resides in the Master Control Room and is a node in the Studio Matrix ring for providing analog audio output.



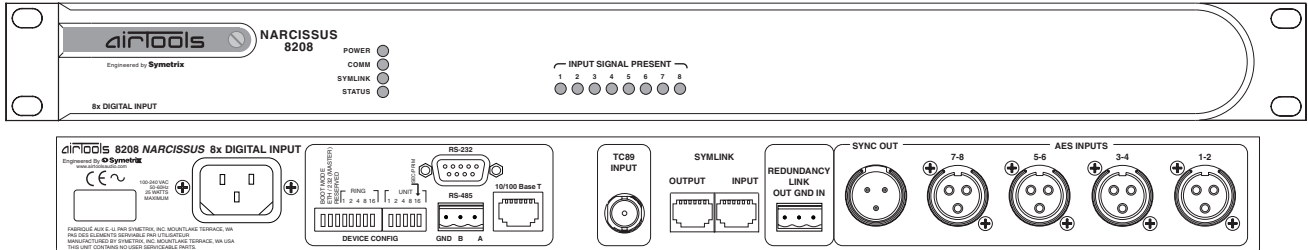


Engineered by Symetrix

Studio Matrix™

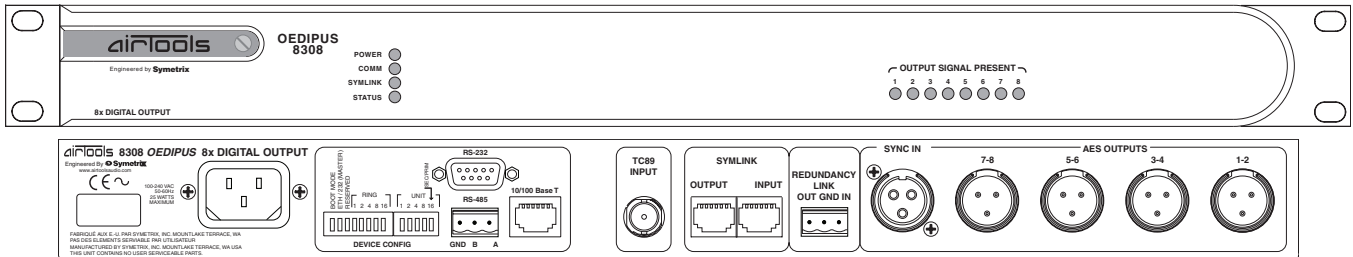
NARCISSUS 8208 • 8x Digital Input

Narcissus resides in the Master Control Room and is a node in the Studio Matrix ring which accepts AES-3 digital audio input.



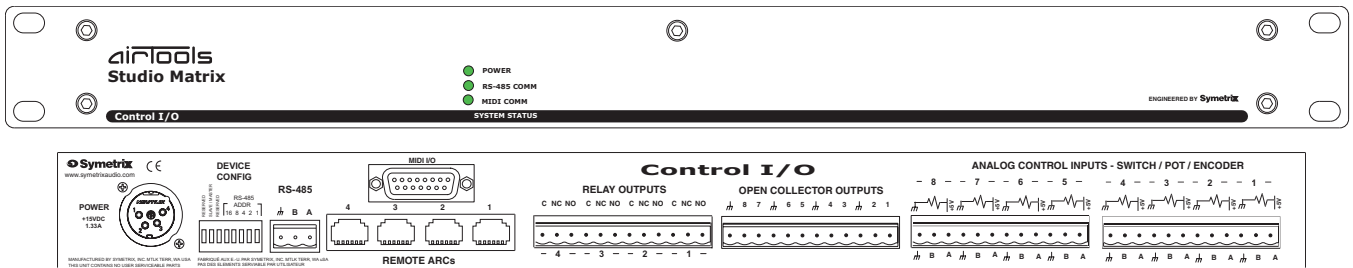
OEDIPUS 8308 • 8x Digital Output

Oedipus resides in the Master Control Room and is a node in the Studio Matrix ring which provides AES-3 digital audio output.



CONTROL I/O

Control I/O is a system accessory which enables the Studio Matrix to control and be controlled by external devices including potentiometers, encoders, relays, RS-485, MIDI, and more.



Panel Drawings

USA Corporate Headquarters
 Symetrix, Inc.
 6408 216th Street SW
 Mountlake Terrace, WA 98043 USA
 Tel. (425) 778-7728
 Fax. (425) 778-7727
 airtools@symetrixaudio.com