

# SONY®

Digital Signage Player

## NSP-1

Digital Signage



simulated image

## INTRODUCTION

### *Energize Your Digital Signage - A New Level of Dynamics*

*The mission of marketing managers and business owners has always been to reach their target market with the right promotional message to turn potential customers into customers. Today, one of the best ways to achieve this mission is by using dynamic digital signage solutions driven by the Sony NSP-1 Network Player.*

*Equipped to handle many layers of high-quality graphics, text, and video, the NSP-1 is ideal for delivering dynamic programming directly to customers. From Macromedia® Flash™ to HTML, and from video to still pictures, it's all available and easy to present with the NSP-1 Digital Signage Player. Other features include portrait mode, a dedicated audio track, and an option to feed live video to the unit, which are all key features to make your digital signage more versatile.*

*The powerful NSP-1 is the engine that drives revenue-generating digital signage solutions.*



## FEATURES

### Versatile Content Presentation

The NSP-1 is capable of producing up to five image layers for display, including graphics, video, and text. What's more, the NSP-1 has the flexibility to present video stored on its HDD or accept a live video feed that can be played out along with the other layers. Also, in addition to the audio accompanying the video, an extra audio channel is available for background music or narration.

### High-Quality Graphics and Text

The NSP-1 supports a variety of graphics including full-color bitmap (.bmp), JPEG, Macromedia Flash, and HTML. Small bitmap images, which are ideal for logos, can be presented at any location on the display. In addition, text can be set for display in any color and in any location on the screen, and can be scrolling, flashing, or still.

### Excellent Video Quality

Crisp, clear, and full-of-life DVD-quality video images can be presented with the NSP-1 as it supports MPEG-2 video at a high bit rate.

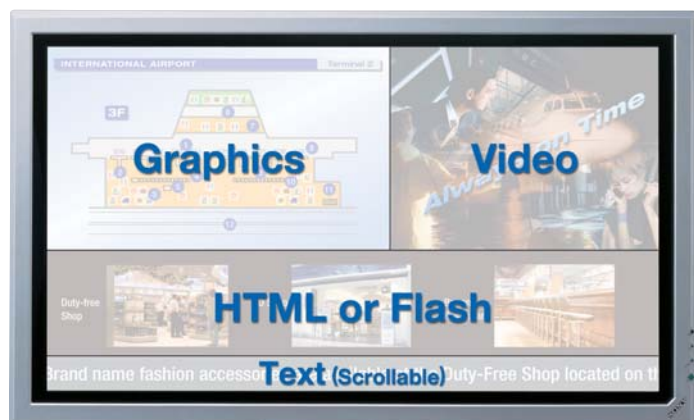
### Portrait Mode<sup>1</sup>

Both portrait and landscape modes are available for presenting content. In portrait mode, the display can be rotated 90° either clockwise or counterclockwise.

### Selectable Output Resolution and Aspect Ratio

Image resolution and aspect ratios can be selected from the following:

- 4:3 RGB: VGA, SVGA, XGA
- 16:9 RGB: WVGA
- 4:3 Composite Video: NTSC, PAL



simulated image

### Dedicated Audio Track

A dedicated audio track is ideal for presenting background music or narrations that accompany video and graphics.

### Browser-Based Remote Setting & Schedule Confirmation

The NSP-1 comes with a pre-installed easy-to-use menu that can be accessed from a PC browser,<sup>2</sup> and can be used to control the unit or confirm playout schedules.

<sup>1</sup> When the NSP-1 is set to portrait mode, HTML, Flash, Graphics, and text are the only contents displayed in portrait orientation.

<sup>2</sup> Microsoft® Internet Explorer 6.0 or higher is required.



## Dynamic Content Transition

Not only can the NSP-1 display a variety of content, it has the versatility to dynamically change the displayed content in accordance with a user specified playlist. Stored content, including graphics, Flash, text, and video, can be automatically updated in a timely manner. Also, regularly updated web pages are displayed for time sensitive information. What's more, a live video signal can be input to the NSP-1 so that the displayed video transitions from stored video to live video in accordance with the playlist.

## Flexible Setting Layout with Wireless LAN<sup>3</sup>

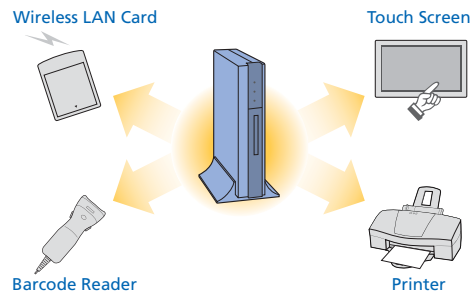
The NSP-1 has a wireless LAN capability that allows multiple units to be placed in various locations within a building - ideal if the units

<sup>3</sup> Contact your local Sony office for a list of wireless LAN cards that are compatible with the NSP-1.

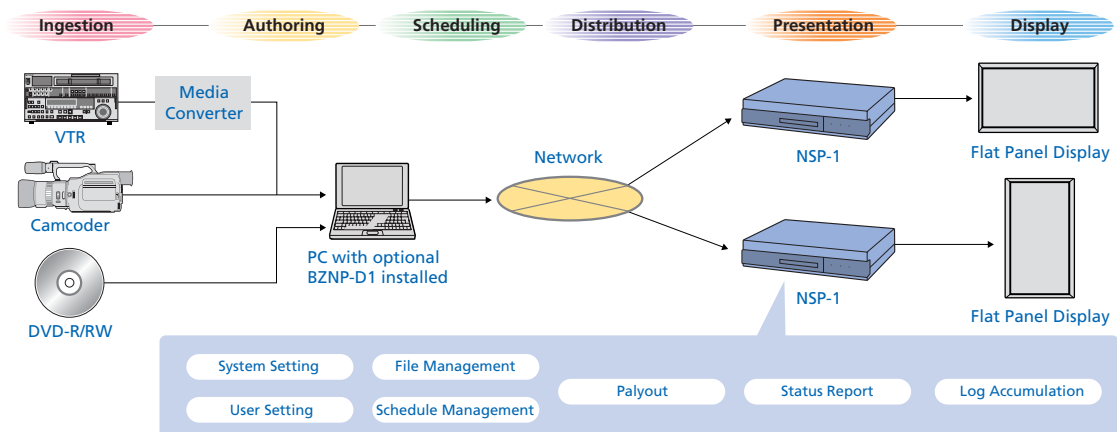
will be moved around frequently for special promotions. This wireless configuration not only affords the flexibility to position the units as required, but it also keeps unsightly wires from cluttering displays.

## Versatile Interfaces for System Customization

A wide range of interfaces allows for custom configurations to satisfy even the most demanding customers. Interfaces include a PC card slot, RS-232C port, a 25-pin GPI, and two USB ports.



## SYSTEM CONFIGURATION

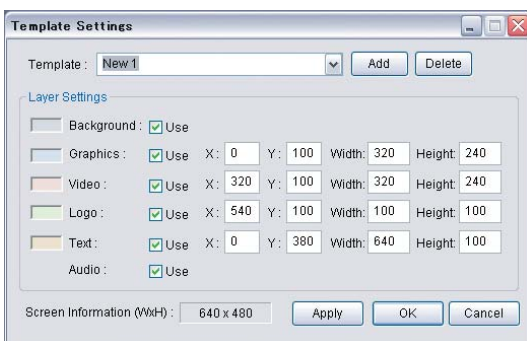
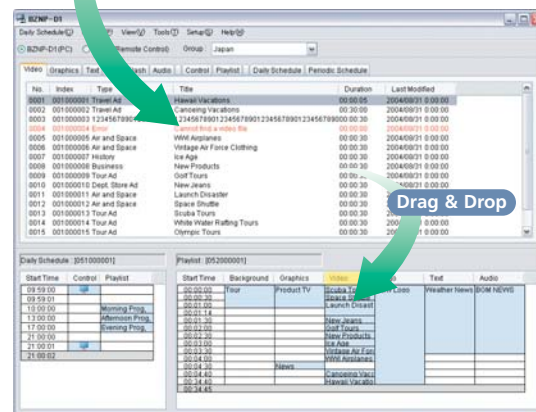
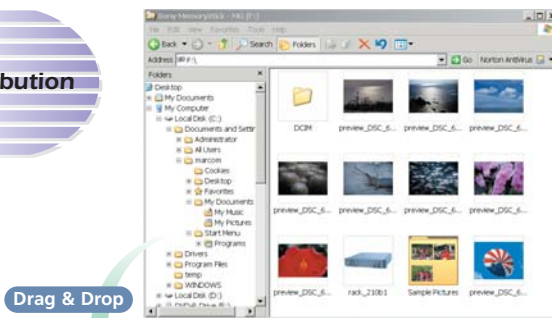


# DIGITAL SIGNAGE PLAYER MANAGEMENT SOFTWARE

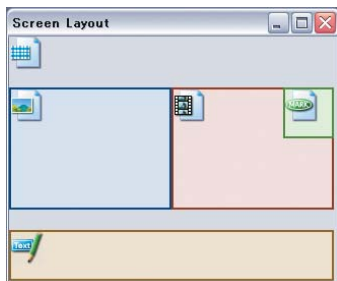


The user-friendly BZNP-D1 Network Player Management Software makes managing the NSP-1 extremely easy. From content management to authoring, and scheduling to distribution, the operation of this software application was created with the most effective workflow in mind. Files can be dragged and dropped from the Microsoft® Windows® Explorer window directly into the software's material bin, from which playlists can be created with ease - also using a drag-and-drop operation. And scheduling is easy to perform too with the Daily Scheduler and Calendar functions.

Both portrait and landscape preview windows can be displayed for intuitive layout confirmation and easy editing. If the preview window does not look exactly as desired, the layout can be simply edited directly from the preview window or the parameters changed in the Playlist Layout Settings menu.



Template Settings, 640 x 480



Screen Layout, 640 x 480

## Supplied:

**BZNP-D1LE Network Player Management Software (Light Edition)**

- Management and control of a single NSP-1 Digital Signage Player
- User-friendly authoring and scheduling

## Optional:

**BZNP-D1 Network Player Management Software**

- Management and control of up to 10 NSP-1 Digital Signage Players (additional expansion licenses available to handle a maximum of 210 units)
- User-friendly authoring and scheduling capabilities for versatile system operation
- BZNP-DP10 Expansion License to handle additional 10 units
- BZNP-DP50 Expansion License to handle additional 50 units

\* BZNP-D1 can be purchased as BZNP-D1EXD that is a package of BZNP-D1 and Canopus ProCoder Express software.

# SPECIFICATIONS

General	
Dimensions (w x h x d):	8 3/8 x 1 3/4 x 6 5/8 inches (210 x 44 x 167 mm)
Weight:	Approx. 3 lb 1 oz (1.5 kg.)
Power:	Power consumption; Approx. 45 W Power supply; DC 13.5 V provided from an AC adapter
Operating temperature:	+42 to +104°F (+5 to +40°C)
Storage temperature:	-4 to +131°F (-20 to +55°C)
Hard Disk Drive:	40 GB

Output (Media Formats)	
MPEG-2:	[Video]MPEG-2 MP@ML, 4.0 Mb/s - 9.0 Mb/s [Audio]MPEG-1 Audio Layer II 2 channels (fixed), 256 kb/s, 48 kHz
Graphics:	Bitmap (.bmp), JPEG (.jpg), FLASH (.swf), HTML (.htm or .html)
Text:	Bitmap (.bmp), Text (.txt)
Audio:	Linear Audio (.wav), MP3 (.mp3)
A/V In:	NTSC, PAL Stereo Audio

Output (Screen Image)	
Analog RGB:	VGA (640 x 480 pixels), WVGA (848 x 480 pixels), SVGA (800 x 600 pixels), XGA (1024 x 768 pixels)
Composite Video:*	NTSC (720 x 480 pixels), PAL (720 x 576 pixels)
Screen Rotation:	Landscape, Portrait (+90°, -90°)

Interface	
Video OUT:	Analog RGB, HD D-sub 15-pin (female) x1 Composite (RCA phono type x1)
Audio OUT:	Stereo RCA phono type x2, analog unbalanced
Video IN:	Composite (RCA phono type x1)
Audio IN:	Stereo RCA phono type x2, analog unbalanced
Network:	10/100Base-T Ethernet, RJ-45 modular jack x1
PCMCIA:	Type II x1
USB:	USB 1.1 x2
Serial:	RS-232C, D-sub 9-pin (male) x1
GPI:	D-Sub 25-pin (female) x1

Operating System and Network	
Operating system:	Linux
Supporting protocols:	TCP/IP, HTTP

Supplied Accessories	
	AC adapter and AC cable
	Stand for desktop mounting in vertical position
	Operation manual (downloadable from the NSP-1 HDD)
	BZNP-D1LE (Light Edition SW, downloadable from NSP-1 HDD)

\* Simultaneous output of Analog RGB and Composite Video is not available



Front Panel



Rear Panel

## PC System Requirements<sup>5</sup>

### Hardware Requirements

<b>Operating System:</b>	Microsoft® Windows® XP Professional (SP1a)
<b>Processor:</b>	Intel® Pentium® 4, 1 GHz or higher (or compatible microprocessor)
<b>Memory:</b>	256 MB RAM or more
<b>Display:</b>	1024 x 768 pixels or greater
<b>Graphics Card:</b>	32-bit color video display adapter (OpenGL card recommended)
<b>Network Interface:</b>	100Base-TX
<b>Sound Card:</b>	Microsoft® DirectX® compatible sound card
<b>HDD:</b>	100 MB available space for installation

### Software Requirements<sup>6</sup>

- Microsoft® Internet Explorer 6.0 or higher
- Microsoft® Windows® Media Player Version 9 or higher
- Microsoft® DirectShow® Version 9.1 (including DirectX® 9.1) must be installed
- Software supporting the MPEG-2 CODEC<sup>7</sup> (DirectShow® compatible) must be installed

- 5 A network environment and a PC with network capability are required.
- 6 Software applications required to create material for playback, such as graphics, video, Flash files, etc. must be purchased separately. Please contact your local Sony sales office for more details on software requirements.
- 7 MPEG-2 CODEC is supported in applications such as Canopus ProCoder Express, WinDVD, PowerDVD, and DVDIt!

# SONY®

Sony Electronics Inc.  
1 Sony Drive  
Park Ridge, NJ 07656  
[www.sony.com/digitalsignage](http://www.sony.com/digitalsignage)  
[www.sony.com/nsp1](http://www.sony.com/nsp1)  
[dsign@am.sony.com](mailto:dsign@am.sony.com)

DS-0003  
MK10160V1

©2004 Sony Electronics Inc. All rights reserved.  
Reproduction in whole or in part without written permission is prohibited.  
Microsoft, DirectShow, DirectX, Windows and Windows Media are trademarks of Microsoft Corporation.  
Intel and Pentium are trademarks of Intel Corporation.  
Macromedia Flash is a trademark of Macromedia, Inc.  
Canopus is a trademark of Canopus Co., Ltd.  
Sony is a trademark of Sony Electronics Inc.