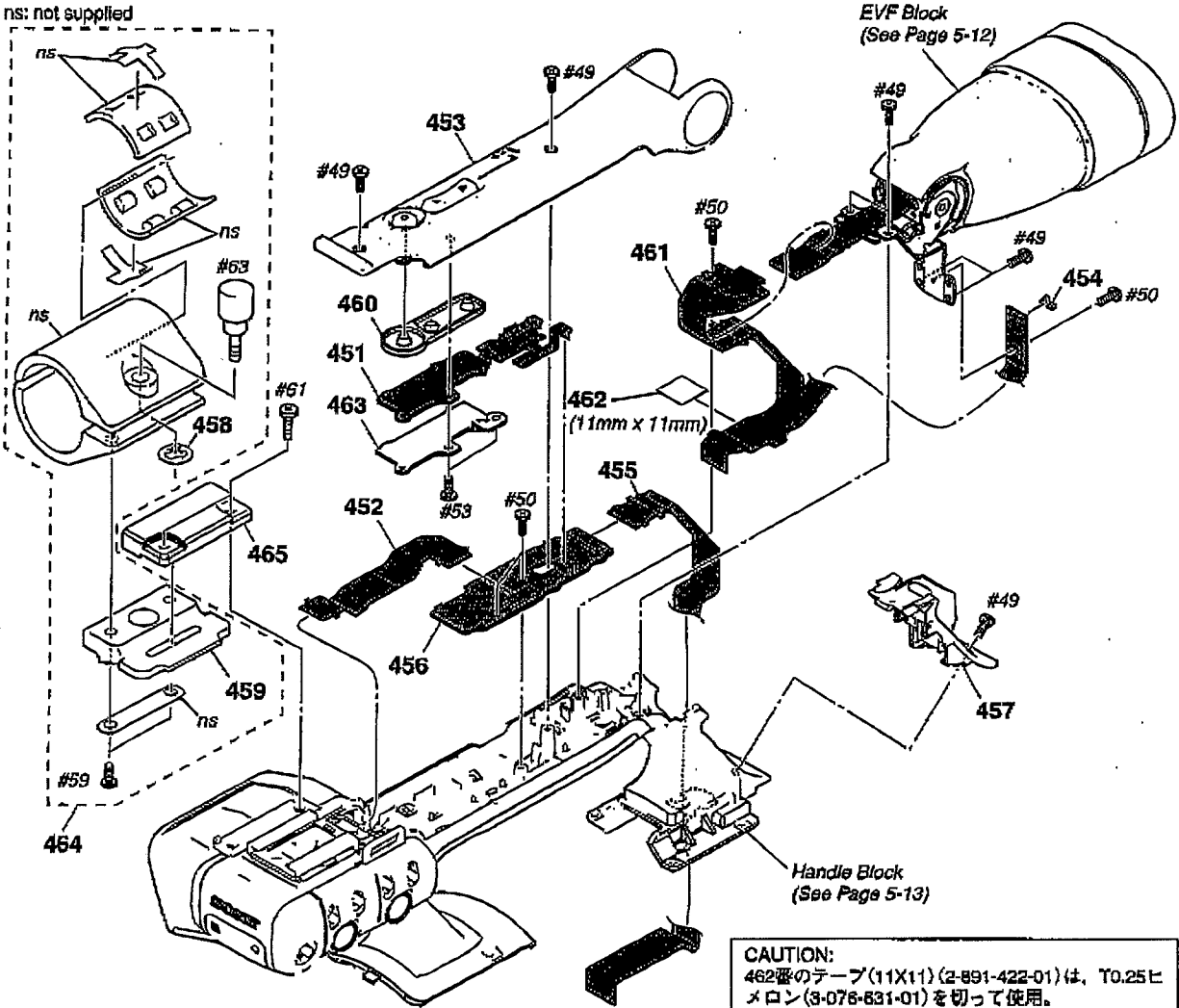


5. REPAIR PARTS LIST

DISASSEMBLY

HARDWARE LIST

5-1-10. HANDLE SECTION



CAUTION:
462番のテープ(11X11)(2-891-422-01)は、T0.25ピ
メロン(3-076-631-01)を切って使用。

CAUTION:
For the part of 462: TAPE (11X11) (2-891-422-01),
cut WOVEN (T0.25), FABRIC NON (3-076-631-01)
into the desired length and use it.

Ref. No.	Part No.	Description
451	A-1217-228-A	FP-483 FLEXIBLE BOARD, COMPLETE
452	1-870-121-11	FP-499 FLEXIBLE BOARD
453	X-2159-321-1	CABINET (UPPER) ASSY (D), HAN
* 454	2-891-983-01	CUSHION, LIGHT INTERCEPTION
455	1-870-122-11	FP-500 FLEXIBLE BOARD
456	A-1217-218-A	GG-003 BOARD, COMPLETE
457	X-2159-323-1	BASE ASSY (D), REMOTE CONTROL
458	3-165-804-01	WASHER, SCREW STOPPER
459	3-060-810-01	BASE, MICROPHONE HOLDER
* 460	2-892-090-01	KEY, RUBBER TACT
461	A-1217-229-A	FP-484 FLEXIBLE BOARD, COMPLETE

Ref. No.	Part No.	Description
462	CAUTION	TAPE (11X11)
463	2-898-108-01	BASE, 2ND KEY
464	X-3950-604-5	HOLDER ASSY, MICROPHONE
465	3-064-629-01	RETAINER (UPPER) D, HOLDER
#49	2-630-005-31	SCREW (M2), NEW TRUSTER, P2 (Black)
#50	2-891-494-11	SCREW (M2), NEW TRUSTER, P2 (Red)
#53	3-080-205-21	SCREW, TAPPING, P2 (Black)
#59	3-080-205-21	SCREW, TAPPING, P2 (Silver)
#61	7-682-549-09	SCREW +B 3X10 (Black)
#63	3-080-811-21	SCREW (M5) (Black)