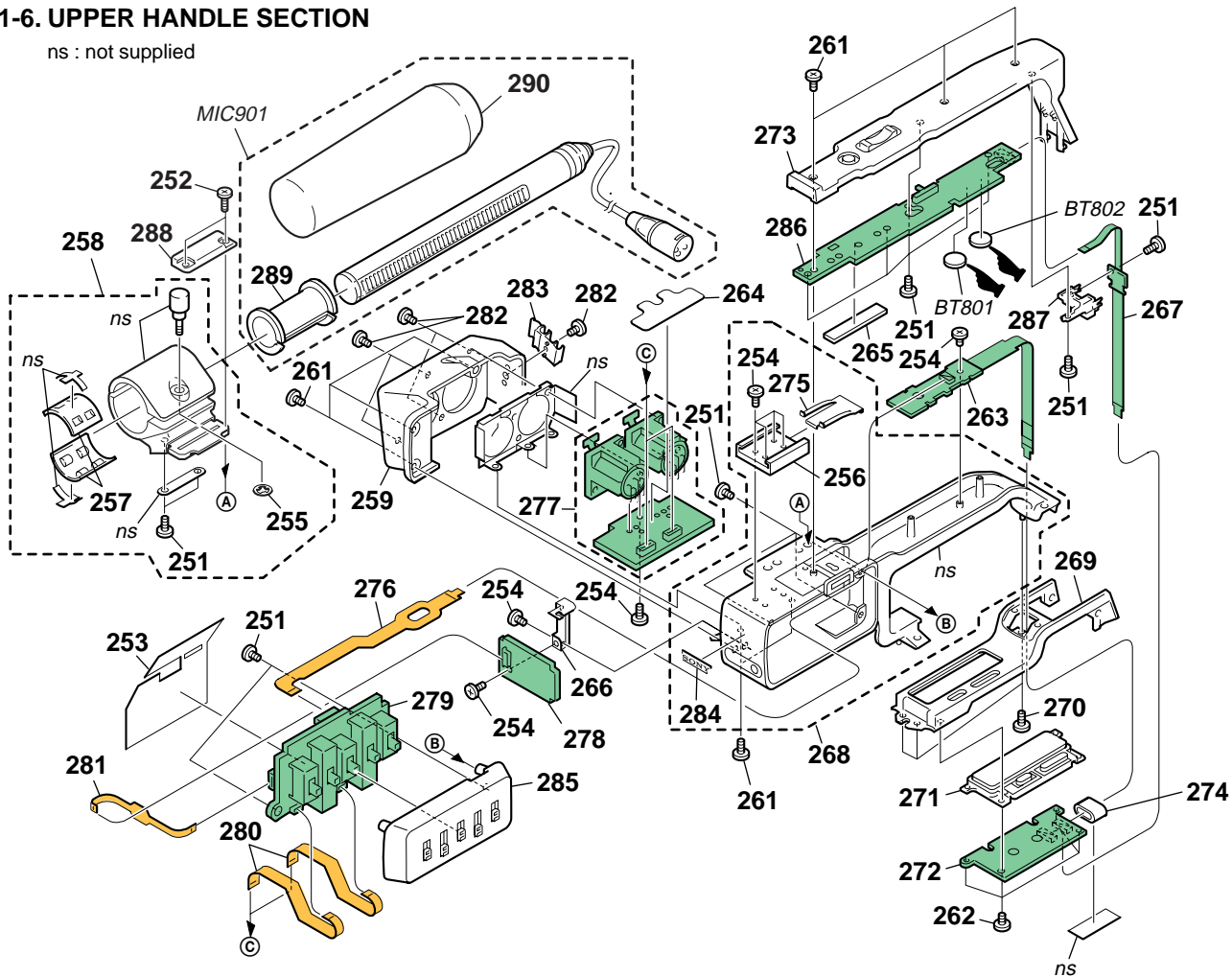


5. REPAIR PARTS LIST

5-1-6. UPPER HANDLE SECTION

ns : not supplied



: BT801, BT802 (Lithium battery) XZ-003 board on the mount position. (See page 4-120)

CAUTION :
 Danger of explosion if battery is incorrectly replaced.
 Replace only with the same or equivalent type.

Ref. No.	Part No.	Description
251	3-080-205-21	SCREW,TAPPING,P2
252	7-682-549-09	SCREW +B 3X10
* 253	3-060-814-01	INSULATED PLATE, SW
254	3-080-202-21	SCREW(M2),LOCK ACE,P2
255	3-165-904-01	WASHER, SCREW STOPPER
256	3-069-286-01	SHOE, ACCESSORY
257	3-608-303-01	RUBBER
258	X-3953-997-1	HOLDER ASSY, MICROPHONE
259	3-060-813-11	CABINET (R), HANDLE
261	3-080-203-41	SREW(M2),LOCK ACE,P2
262	3-053-121-11	BOLT (M2), SPRING
263	A-7078-959-A	MA-430D BOARD, COMPLETE
* 264	3-063-408-01	SHEET, XLR
265	3-088-406-01	SHEET (G), ABSORBING
* 266	3-060-815-01	BRACKET, DD
267	A-7078-955-A	RM-091 BOARD, COMPLETE
268	X-3953-995-1	HANDLE (D) ASSY
269	3-060-786-31	CABINET (UPPER)
270	3-053-121-21	BOLT (M2), SPRING
271	X-3950-600-1	FRAME (D) ASSY, FK

Ref. No.	Part No.	Description
272	A-7078-942-A	FK-088 BOARD, COMPLETE
273	X-3953-994-1	COVER (D) ASSY, HANDLE
274	1-469-829-11	CORE, FERRITE
275	3-688-754-11	SPRING
276	1-861-006-11	FP-897 FLEXIBLE BOARD
277	A-7078-961-A	XM-005 BOARD, COMPLETE
278	A-7078-960-A	XD-003 BOARD, COMPLETE
279	A-7078-962-A	XS-004 BOARD, COMPLETE
280	1-678-052-11	FP-217 FLEXIBLE BOARD
281	1-678-053-11	FP-218 FLEXIBLE BOARD
282	3-061-062-11	BOLT (M2.6)
283	3-087-942-01	HOLDER (2 GANG), CABLE
284	3-969-037-02	EMBLEM (NO.3), SONY
285	X-3953-996-1	CABINET (L) ASSY, HANDLE
286	A-7078-963-A	XZ-003 BOARD, COMPLETE
287	X-3953-946-1	HOLDER ASSY, RM FIXED
288	3-064-629-01	RETAINER (UPPER) D, HOLDER
* 289	3-179-882-01	SPACER, MICROPHONE
290	3-048-481-01	SCREEN, WIND
MIC901	8-814-298-90	MICROPHONE ECM-NV1