

HS1 SPECIFICATIONS

OPTICAL		
	Projection system: LCD panels:	3 LCD panels, 1 lens, projection system 0.7-inch p-Si TFT SVGA (800 x 600) LCD panels; 1,440,000 pixels (480,000 pixels per panel x 3 panels)
	Projection lens:	1.2x zoom lens; F 1.8 - 2.1mm, f22.5 - 28.3mm
	Lamp:	120W UHP type
	Screen coverage:	3 1/2' to 12 1/2' feet (viewable area, measured diagonally in 4:3 aspect ratio)
GENERAL		
	Color system: Resolution: Acceptable Video Signals:	NTSC3.58, PAL, SECAM, NTSC4.43, PAL-M, PAL-N (automatic/manual selection) Video: 600 TV lines; RGB: 800 x 600 pixels DTV (480i, 480p, 1080i, 720p) Progressive component; 15 K RGB/Component 50/60 Hz system; Y/C Video, Composite video
	Acceptable Computer Signals: Speaker:	RGB: Horizontal 19 - 72 kHz, Vertical 48 - 92 Hz 2W x 2 (max.)
	Power requirements: Power consumption: Dimensions (whd): Weight:	AC 100 to 240V, 50/60Hz 190W (max); 5W (standby) 13 1/2 x 6 1/8" x 11 7/8" (W) x (H) x (D) (340 x 154 x 300mm) 8 lb. 10 oz. (3.9 kg)
	Operating temperature: Operating humidity:	14 to 104° F (0 to 35° C) 35 to 85%
INPUTS		
VIDEO	Composite: S Video: Y: C:	Phono type Mini DIN 4-pin 1Vp-p ± 2dB, sync negative, 75Ω automatic termination Burst 0.286 ± 2dB (NTSC), 75Ω automatic termination; 0.3Vp-p ± 2dB (PAL), 75Ω automatic termination
PJ MULTI		32 pin Multi connector Component/ - Progressive Component /YPBPR/ Analog RGB Audio L/R G: 0.7Vp-p ± 2dB positive, 75Ω G with Sync /Y: 1Vp-p ± 2dB sync negative, 75Ω B/CB/PB: 0.7Vp-p ± 2dB positive, 75Ω R/CR/PR: 0.7Vp-p ± 2dB positive, 75Ω
AUDIO		Phono type (L/R)
MEMORY STICK		JPEG files (DCF file only)



cineza™

Supplied Accessories

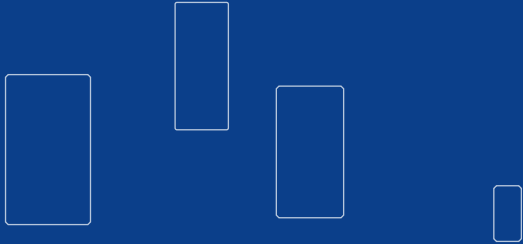
- RM-PJHS1 Remote Commander Control Unit with Backlit Controls
- SIC-HS10 Signal Interface Cable Multi-V/L/R
- AA size Battery (x2)
- Air Filter
- Operating Manual
- Lens cap

Optional Accessories

- IFU-HS1 Signal Interface Unit for easy hook-up of all components with a single cable to the HS1 projector
- SU-HS1 Projector Stand
- SIC-HS10 Signal Interface Cable Multi-V/L/R
- SIC-HS20 Signal Interface Cables Multi-Y/Pb/Pr/S/L/R
- SIC-HS30 Signal Interface Cable Multi-HD15/LR
- SIC-HS40 Signal Interface Cable Multi-Y/Pb/Pr/S/V
- LMP-H120 Projector lamp for replacement
- PK-HS1FL Projector Air Filter

SONY®

Sony Electronics Inc.
1 Sony Drive
Park Ridge, NY 07656



© 2001 Sony Electronics Inc. All rights reserved. Reproduction in whole or in part without written permission is prohibited. Features and specifications are subject to change without notice. Sony, Cineza, the Cineza Logo, Handycam, Memory Stick, PlayStation, Remote Commander and Side Shot are trademarks of Sony.

SONY®

**THE ENTIRE
> HOME ENTERTAINMENT
REVOLUTION COMES DOWN TO THIS**



cineza™

Movies with widescreen cinematic impact. Sports that put you on the playing field. Games so real, you'll feel like you're in the action. But they're all in your home, in any room, on any wall. That's the power of the Sony Cineza™: the VPL-HS1 Digital Home Entertainment LCD Projector. Powerful, affordable, and styled with a sleek cabinet, it's smaller than most projectors - but it creates brilliant giant-screen images. There's no huge cabinet, no installation hassle, no complex hookups. You don't even have to dedicate a "media room" because your Cineza Projector is portable.

EXPERIENCE THE FULL POTENTIAL OF DVD DIGITAL SATELLITE TV DIGITAL PHOTOS AND THE NEXT GENERATION OF VIDEO GAMES.

SEE ALL THE EXCITEMENT YOU'VE BEEN MISSING.

Digital satellite broadcasts, DVD movies, and next-generation video games are today's most exciting entertainment experiences - but unless you experience them with the Sony Cineza Projector, you're missing half the entertainment. Your Cineza Projector allows you to create giant-screen high-resolution images ranging from 3½ to 12½ feet (viewable area, measured diagonally). You'll see brilliant images with spectacular color that looks natural and lifelike. Image quality is uniform from corner to corner, thanks to 3D Gamma Correction circuitry.

And razor-sharp picture details result from a 3D Comb Filter that minimizes cross-color or "dot noise" distortion.

PICTURE YOURSELF IN THE WIDESCREEN FUTURE.

DVD today...HDTV tomorrow?

Whatever happens, you'll be taking a giant step in the right direction - because your giant-screen Sony Cineza Projector is capable of projecting both 16:9 widescreen and 4:3 standard ratio pictures. Widescreen viewing gives you DVD and letter boxed VCR movies

the way they were meant to be seen. And with Sony's DTV-ready projection technology, you'll have input capability for multiple signals - including today's composite and S-video TV signals, future DTV and HDTV signals, ultra high-resolution XGA computer signals, even progressive scan signals from advanced digital components.

A NEW ANGLE ON VISUAL ENTERTAINMENT.

The Cineza Projector is designed to give everyone the best seat in the house. In fact, it's the first video projector with the Side Shot™ feature - digital keystoneing which means you'll have horizontal as well as vertical adjustment capability. You can place your projector at an angle to your screen, rather than in the middle of the room, then use your Remote Commander® control to correct for "keystone" effect. Your picture is magnificent -- and your audience sits front and center. You can also use an optional Sony projector stand that lets you angle your projector, then lock in vertical and horizontal adjustments.

PLUG, PLAY, AND WATCH.

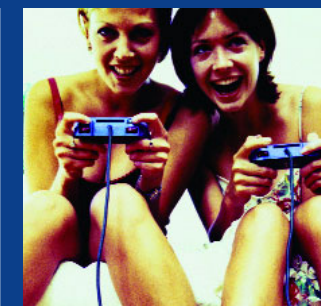
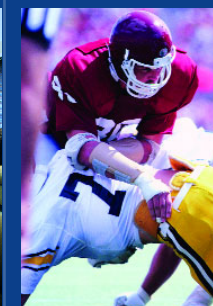
What do you want to do tonight? Your Cineza Projector makes it easy. You can connect directly to your TV, VCR, DVD player, even component TV tuner or PlayStation® video game console. So you can carry it to a child's room for video games, a bedroom for late-night movies, or even over to a friend's house to watch the big game with a big audience. Or, you can use Sony's optional IFU-HS1 Signal Interface Unit to link all your components in a single, simple system, with single-cable hookup to your Cineza Projector.



cineza™

DIGITAL PHOTOS AS BIG AS LIFE.

Want to give home videos the big-screen impact of Hollywood productions? Plug in your Sony Handycam® camcorder, and let a Cineza Projector bring out your star quality. And you'll have direct input for Memory Stick™ media - so if you take digital still photos you can share giant-screen still images in JPEG format with family and friends. Your Cineza Projector experience can keep on growing as you move into the digital future.



150" VPL-HS1 Projected Image*

*Viewable area, measured diagonally.

MORE SONY CINEZA PROJECTOR FEATURES

ULTRA-QUIET FAN.

With your Cineza Projector, a whisper-quiet cooling fan won't distract you from the cinematic experience of your giant-screen picture.

VIDEO MEMORY.

You can store picture control settings in memory for multiple home entertainment components, including VHS tape, DVD disk, TV programs, or computer input - then switch quickly by remote control to the ideal setting for whatever you're watching.

PRESET SIGNAL INPUT DATA.

Once you input your video signals, you can instantly select the best image reproduction mode.

FULL-FUNCTION BACKLIT REMOTE.

With the supplied infrared RM-PJHS1 Remote Commander unit, controlling your projector is simple - and a backlit panel helps you see the controls when room lights are low.

USER-FRIENDLY ON-SCREEN DISPLAY.

On-screen menus guide you through projector setup and input selection.

MULTI-LANGUAGE MENUS.

You can choose from nine languages for menu display: English, French, German, Spanish, Italian, Portuguese, Japanese, Chinese, or Korean.

STEREO SPEAKERS.

You'll have a pair of 2W(max.) stereo speakers for sound from components you hook up directly, like a camcorder or video game.

EASY LAMP & FILTER EXCHANGE.

You can easily exchange both the projection lamp and filter. On-screen messages prompt you when it's time to make a change.

1-800-472-SONY ext. HS1
www.sony.com/cineza