

# SONY®

## Video Presentation Stand **VID-P110**

*The new, high performance Sony  
VID-P110 Video Presentation Stand.  
A powerful visual tool to enhance  
your presentations.*



AV Presentation

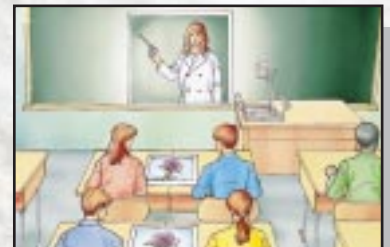


Video Conference

AV Education



Distance Learning



# Features

## High Picture Quality

- Excellent image reproduction. The 1/3-inch CCD camera provides a high horizontal resolution of over 460 TV lines for the NTSC model and over 450 TV lines for the PAL version.

## Easy and Functional Operation

- High speed auto focus
- Auto iris control
- Auto white balance
- Two pattern memories. Each memory stores Focus, Zoom, Iris, White Balance, Lighting and Effect mode (pos/neg, B&W/ color) settings for the optimum display of a piece of presentation material.



- One-touch, swing out, close-up lens.

## Versatile Features and Functions

- 12 times powered zoom capability
- Flip up, pan (300°) and tilt (20°) camera head.



- Dual arm lights, each with two 9 W fluorescent lamps.
- New built-in back light provides very even illumination of transparent sheets, (up to full A4 or letter size), slides or negative/positive films.
- Input selector for quick switching between camera and two external video /audio sources.

- S-video input/output connections. (Y/C separate/mix circuit)
- Black and white mode for optimum display of printed documents.
- Optional preview monitor can be easily attached with the accessory shoe.

## Option

- RS-232C interface for control from a PC.
- Light-weight, compact and easy-to carry design.



# Specifications

	VID-P110 (NTSC)	VID-P110 (PAL)
Color System	NTSC	PAL
Pick-up device	1/3 inch interline transfer, CCD	
Resolution (HxV)	460x350 TV lines	450x400 TV lines
Picture elements	380,000 (768H x 494V)	440,000 (752H x 582V)
Shooting Area (max.)	325 x 240 mm	
Shooting Area (min.)	29 x 22 mm	
Lens	F=1.8-2.7, f=5.4-64.8 mm	
Zoom	Powered (Two levels of speed zooming)	
Focus	Auto / Manual	
Iris	Auto / Manual	
White balance	Auto / One push	
Pattern Memory	2 patterns	
Pos/Neg Switching	Included	
Mono/Color	Included	
Output selector	Camera/Video1/Video2	
Arm light	9 W twin-fluorescent lamp x 2	
Built-in Backlight	2.5 W cold cathode ray lamp x 2	
Accessory shoe	Included	
Input connectors		
Video in	Phono x 2 1Vp-p, 75 Ω, sync negative	Phono x 2 1Vp-p, 75 Ω, sync negative
S Video in	4-pin mini DIN x 2 Y: 1 Vp-p, 75 Ω, sync negative C: 0.286 Vp-p, 75 Ω,	4-pin mini DIN x 2 Y: 1 Vp-p, 75 Ω sync negative C: 0.300 Vp-p, 75 Ω
Audio in	Phono x 2 pairs, stereo Input impedance: 47k Ω Level: -10 dBu, unbalanced	"Phono x 2 pairs, stereo Input impedance: 47k Ω Level: -10 dBu, unbalanced
Mic in	Standard jack x 1 Input impedance: 3.3k Ω Level: -60 dBu, unbalanced	Standard jack x 1 Input impedance: 3.3k Ω Level: -60 dBu, unbalanced

	VID-P110 (NTSC)	VID-P110 (PAL)
Output connectors		
Video out	Phono x 1, BNC x 1 1Vp-p, 75 Ω, sync negative	Phono x 1, BNC x 1 1Vp-p, 75 Ω, sync negative
S Video out	4-pin mini DIN x 1 Y: 1 Vp-p, 75 Ω, sync negative C: 0.286 Vp-p, 75 Ω	4-pin mini DIN x 1 Y: 1 Vp-p, 75 Ω, sync negative C: 0.300 Vp-p, 75 Ω
Audio out	Phono x 1 pair, stereo Output impedance: less than 600 Ω Level: -10 dBu, unbalanced	Phono x 1 pair, stereo Output impedance: less than 600 Ω Level: -10 dBu, unbalanced
RS-232C connector	D-sub 9-pin, Male Baud rate: 9600 bps	
Power Requirements	120 V AC, 60 Hz	230 V AC, 50/60 Hz
Power Consumption	120 V, 0.3 A	30 W
AC outlet	max. 300W, unswitched	
Dimensions (WxHxD)	Approx. 446 x 583 x 622 mm (17 5/8 x 23 x 24 1/2 inches) Approx. 446 x 166 x 634 mm (when folded) (17 5/8 x 6 5/8 x 25)	
Mass	Approx. 8.0 kg (17 lb 10 oz)	
Supplied accessories	AC power code x 1, Operation Manual x 1, Interface Manual x 1	



rear view (NTSC)



rear view (PAL)

## Distributed by