

SONY®

Color Video Monitor
PVM-20L2*
PVM-14L2*
PVM-9L2*



*19-inch/13-inch/8-inch
Viewable area, measured diagonally.

PVM-L2 Series

Introducing Sony's new cost-effective PVM-L2 Series – everything you'd expect in Sony Trinitron® professional monitors, and much more. Enhanced by stunning high-resolution image quality and new input flexibility, these monitors provide a wide range of options for broadcast, studio, and field production needs.

With your choice of 20", 14" or 9" CRT's, option slots to provide SDI and SDTI-CP, additional analog component input capability, and i.Link®** interconnectivity, the PVM-L2 Series gives you unprecedented flexibility. Never before has Sony packed so much value and performance in a monitor series ideally suited to so many applications, today and tomorrow!*



PVM-14L2



PVM-20L2



PVM-9L2

Features

Superb Picture Performance

► High Picture Quality

The Trinitron CRT incorporated in both the PVM-20L2 and PVM-14L2 provides clear and precise images with a resolution of 600 TV lines. (Supported on PVM-20L2 and PVM-14L2 monitors. The PVM-9L2 incorporates a Trinitron CRT that provides images with a resolution of 250 TV lines.)

► Beam-Current Feedback Circuit

Because monitor white balance is critical during continuous operation over long periods of time, PVM-L2 Series monitors are equipped with a beam-current feedback circuit. This inhibits white balance drift, resulting in the long-term color stability.

► Digital Comb Filter

The NTSC/PAL digital comb filter enhances the luminance/chrominance separation used to reduce cross-color interference and color noise, for clear and highly detailed picture reproduction.

Input Flexibility

► Versatile Signal Input

PVM-L2 Series monitors are equipped with input connectors for component (Y/R-Y/B-Y)[†], RGB[†], Y/C and composite signals to provide system flexibility. For accurate reproduction, the component level can be adjusted according to the input system.

[†] The PVM-9L2 monitor requires the optional BKM-129X Analog Component Input Adaptor.

► NTSC/PAL Operation

PVM-L2 Series monitors can automatically detect whether the composite signal input is NTSC or PAL. Users are not required to manually select the appropriate color system.

► External Sync

PVM-L2 Series monitors accept external sync signals, for easy synchronization with other equipment. The external sync can be set to automatically detect the input type and switch to the appropriate settings.

► Signal Interface Options

A variety of optional input adaptors let you view most of the new digital formats. By simply inserting adaptors into the option slot on the rear panel, PVM-L2 series monitors can accept direct input from:



SDI 4:2:2 Input Adaptor

BKM-120D

- D-1 SDI signal input (x 2)/D-1 SDI signal output with active loop-through (x 2)

Analog Component Input Adaptor

BKM-129X

- Analog component (Y/R-Y/B-Y, RGB) with loop-through (x 1, automatic 75Ω termination)/EXT SYNC with loop-through BNC (x 1, automatic 75Ω termination)

SDTI-CP/SDI Input Adaptor

BKM-150CP

- SDI input with audio decoding
- View MPEG streams at up to 4X speed
- SDTI-CP MPEG-2 4:2:2 P@ML decoding
- SDTI-CP/SDI signal input (x2)/SDTI-CP/SDI signal output with active loop-through (x2)/decoded analog output (x2)

i.LINK (IEEE1394) Input Adaptor

BKM-155DV

- i.LINK high speed video input with audio decoding
- i.LINK 6 pin input/output (x2), decoded analog audio output (x2)

Effective Operational Functions

▶ 4:3/16:9 Capability

Front panel switching allows users to view both 4:3 and 16:9 formatted video.

▶ Underscan Switch

QA functions are made easier with Underscan mode. In this mode the picture size is reduced, and the entire active picture is displayed, allowing users to observe picture edges more clearly.

▶ Switchable Color Temperature

The color temperature can be selected from a choice of D65, D93 or user-preset (3200K-10000K).

▶ Blue-Only Mode

These monitors enable signal noise to be precisely evaluated, and chroma/phase adjustments to be made easily using Blue-Only mode, which displays images with a bluish hue.

▶ Auto/Manual Degaussing

Landing problems are eliminated since the monitor is automatically degaussed when turned on. Degaussing can also be initiated by pressing the Manual Degauss button on the front panel.

Simple Operation

▶ Auto Chroma/Phase Setup

When time is at a premium, Auto Chroma/Phase Setup mode facilitates the complex, delicate procedure of monitor adjustment. Using standard SMPTE color bars as a reference, this function automatically calibrates chroma and phase.

▶ Parallel Remote Control/Tally

Parallel Remote Control and Tally can be controlled via a Modular 8-pin connector, and the pin assignments can be set from the On-Screen Menu making integration easy.

▶ On-Screen Menu

Sony PVM-L2 Series monitors provide a variety of window-type on-screen menus for easy monitor adjustment and operation.



▶ Sub-Control Mode

In this mode, the adjustment range of the contrast, brightness, chroma and phase controls can be shifted. A preferred level can be set for the center-click position of each control, allowing simplified operation.

▶ White Balance Adjustment

Bias and Gain controls are provided on their own menu. Simple key operations select the adjustment and changes the values.

▶ AC/DC Operation

As well as operating from an AC power source, the PVM-9L2 can also be powered from a 12 V DC source for use in the field. The monitor can also be operated using an optional BP-L90A, BP-L60A, BP-M50 or BP-M100 battery. (Supported on PVM-9L2 monitors. The PVM-9L2 is not equipped with a battery charger. To charge batteries, an appropriate battery charger must be used.)

PVM-9L2



Other Features

▶ 19-inch EIA-Standard Rack-Mountable

PVM-9L2 monitors can be mounted side by side in a 19-inch EIA-standard rack using the optional MB-520 rack-mounting bracket. Empty spaces can be covered with optional MB-509 Mounting panel. PVM-14L2 monitors can be mounted using the optional MB-502B mounting bracket. PVM-20L2 monitors can be mounted using the optional SLR-103A slide-rail kit.

▶ Closed Caption Decoder

- Closed Caption Decoder is available as a part
- Available through Sony BPC parts directly.
Hotline number is 1-800-538-7550

▶ Audio-Monitoring Facility

A speaker (0.8 W, monaural) is built into the monitor and can be fed from either the supplied inputs or from option card decoding.

▶ Carrying Handle

The PVM-9L2 can be carried to any location using its integrated carrying handle. (Supported on PVM-9L2 monitors.)

▶ Monitor ENG Kit

The optional VF-508 ENG Kit for PVM-9L2 monitors contains a monitor hood and cord reel for operational convenience in the field. (Supported on PVM-9L2 monitors.)

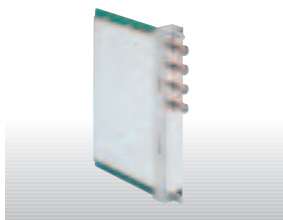
▶ Worldwide Power Supply

Monitors operate 100 to 240 V (50/60 Hz).

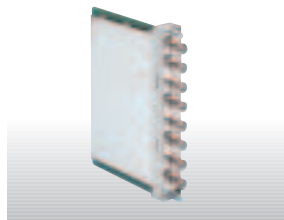
* 19-inch, 13-inch and 8-inch viewable area, measured diagonally

**i.LINK is a trademark of Sony used only to designate that a product contains an IEEE 1394 connection. The i.LINK connection may vary depending on the software applications, operating system and compatible i.LINK devices. All products with an i.LINK connection may not communicate with each other. Please refer to the documentation that comes with any device having an i.LINK connection for information on compatibility operating conditions and proper connection. For information on any Sony device having an i.LINK connection contact Sony at 1-800-686-7669.

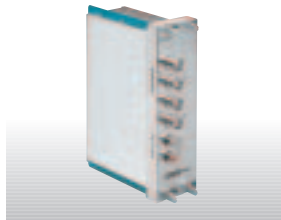
Optional Accessories



BKM-120D
SDI 4:2:2 Input Adaptor



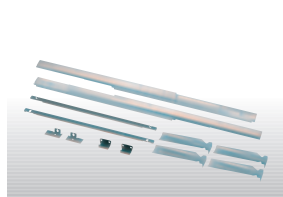
BKM-129X
Analog Component Input Adaptor



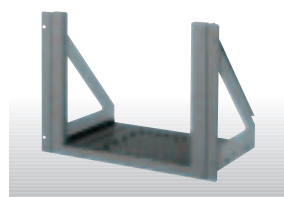
BKM-150CP
SDTI-CP/SDI Input Adaptor



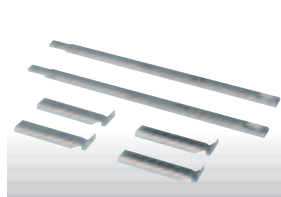
TU-1041U
TV Tuner



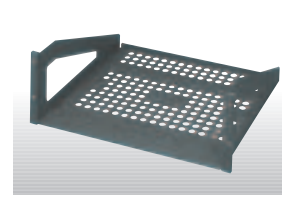
SLR-103A
Slide Rail Kit for
PVM-20L2 Monitors



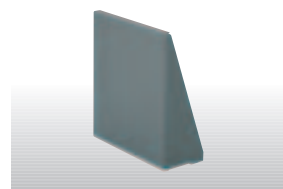
MB-502
Rack Mount Bracket
for the PVM-14L2



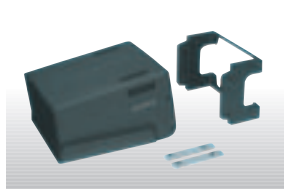
SLR-102
Slide Rail Kit for
PVM-14L2 Monitors



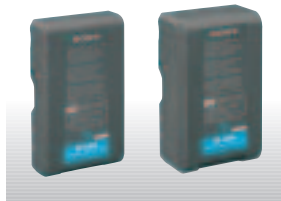
MB-520
Rack Mount Bracket
for the PVM-9L2



MB-509
Blank Panel for the PVM-9L2



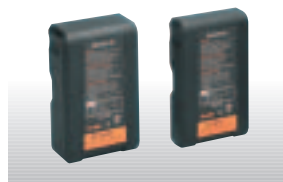
VF-508
Monitor ENG Kit
(monitor hood and cord reel)
for the PVM-9L2



BP-L60A/L90A
Rechargeable Lithium-ion
Battery Pack



BC-L120
Lithium-ion Battery Charger



BP-M50/M100
Rechargeable Nickel Metal
Hydride Battery



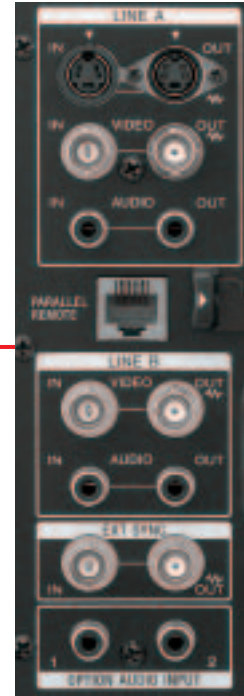
BC-M50
Battery Charger for BP-L60A/90A
and BP-M50/M100

Supplied Accessories

- AC Plug Holder for PVM-20L2 , PVM-14L2 and PVM-9L2 Monitors
- AC Cord (1)
- Operation Manual (1)

Rear Panel

PVM-9L2



PVM-14L2/20L2



Front Panel



PVM-14L2/20L2



PVM-9L2

Specifications

		PVM-20L2	PVM-14L2	PVM-9L2
General				
CRT	CRT type*	20-inch Trinitron	14-inch Trinitron	9-inch Trinitron
	AG pitch	0.4 mm	0.25 mm	0.5 mm
	Phosphor	P-22		
	Effective picture size (4:3)	385.8 (W) x 290.6 (H) mm, 19 (Diagonal) inches (481.3 mm)	267.5 (W) x 200.6 (H) mm, 13 (Diagonal) inches (340.0 mm)	159.5 (W) x 117.0 (H) mm 8 (Diagonal) inches (194.9 mm)
Resolution (4:3/16:9)		600 TV lines		
Color system		PAL, NTSC		
Aperture correction		0 to 6 dB		
Frequency response		10.0 MHz ($_{-3}^0$) dB		6.0 MHz ($_{-3}^0$) dB
Synchronization		AFC time constant 1.0 ms		
Scanning frequency		15.734 kHz (NTSC), 15.625 kHz (PAL)		
Normal scan		7% overscan		
Underscan		5% underscan		
Linearity	Horizontal	Less than 5%	Less than 4%	
	Vertical	Less than 5%	Less than 4%	
Convergence	Center	0.5 mm (Typical)	0.4 mm (Typical)	
	Peripheral	0.7 mm (Typical)	0.5 mm (Typical)	
Raster size stability	Horizontal	1.0%		
	Vertical	1.5%		
HV regulation		4.0%	3.5%	3.0%
Color temperature		D65/D93/User adjustable		
Power requirements		AC 100 to 240 V, 50/60 Hz		
Power consumption (Typical/with options)		98 W, 108 W (with BKM-150CP)	75 W, 86 W (with BKM-150CP)	AC:47 W, DC:38 W AC:58 W, DC:48 W (with BKM-150CP)
Dimensions (W x H x D)		Approx. 17 ⁷ / ₈ x 18 ¹ / ₄ x 20 ⁷ / ₈ inches (453 x 463 x 529 mm)	Approx. 13 ⁵ / ₈ x 13 ¹ / ₂ x 17 inches (346 x 340 x 430 mm)	Approx. 8 ⁵ / ₈ x 8 ⁵ / ₈ x 14 ³ / ₄ inches (217 x 218 x 373 mm)
Weight		Approx. 72 lb 12 oz (32.6 kg)	Approx. 39 lb 11 oz (18.0 kg)	Approx. 17 lb 10 oz (8.0 kg)
Input/Output				
Line A	Composite	Loop-through BNC, 1.0 Vp-p +3 dB/-6 dB, sync negative, automatic 75 Ω termination		
	Y/C**	Loop-through Mini Din 4-pin, automatic 75 Ω termination		
	Y	1.0 Vp-p, sync negative		
	Audio	Phono jack, -5 dBu 47 kΩ or higher		
Line B	Composite	Loop-through BNC, 1.0 Vp-p, sync negative, automatic 75 Ω termination		
	Audio	Phono jack, -5 dBu 47 kΩ or higher		
RGB/Component		Loop-through BNC, automatic 75 Ω termination		-
	G/Y	0.7 Vp-p +3 dB/-6 dB		-
	Sync on G	0.3 Vp-p		-
	B/B-Y	0.7 Vp-p +3 dB/-6 dB		-
	R/R-Y	0.7 Vp-p +3 dB/-6 dB		-
	Audio	Phono jack, -5 dBu 47 kΩ or higher		-
Ext. sync		Loop-through BNC, automatic 75 Ω termination 4.0 Vp-p ± 6 dB, sync negative, usable tri-level sync signal 0.6 Vp-p ± 6 dB		
Option slot		1		
	Audio	Phono jack x 2, -5 dBu 47 kΩ or higher		
Remote	Parallel remote	Modular 8-pin (Assignable)		
Audio output		0.8 W (Distortion: Less than 5%)		
Regulation Compliance		UL-1950, CSA-950, EN 60950, VCCI class A, FCC class A, IC class A, C-Tick, CE (LVD), CE (EMC), JEITA, DHHS, DNHW, CCC, KTL		
Operating conditions	Operating temperature	0 to +35° C (+32 to +95° F)		
	Storage temperature	-10 to +40° C (+14 to +104° F)		
	Operating humidity	35 to 85% (No condensation)		
	Storage humidity	0 to 90%		

* 19", 13", 8" viewable area, measured diagonally.
** The Y/C input has priority over the Composite input.

SONY

Sony Electronics Inc.
1 Sony Drive
Park Ridge, NJ 07656
www.sony.com/displaysystems

MK10009V1IW02NOV
DI-0043

©2002 Sony Electronics Inc. All rights reserved.
Reproduction in whole or in part without written permissions is prohibited.
All non-metric weights and measures are approximate.
Features and specifications are subject to change without notice.
Sony, i.LINK, and Trinitron are trademarks of Sony.

Printed in USA (12/02)