

# SONY®

Professional Flat Panel Plasma Displays

## PlasmaPro™ Series

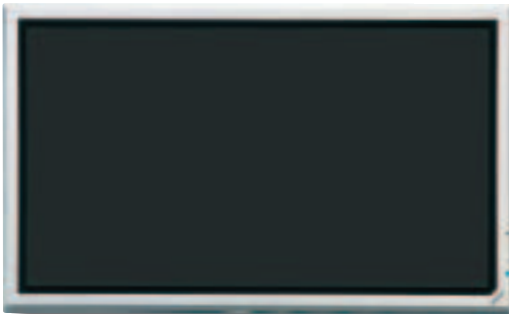


PFM-50C 1  
PFM-42B2/S  
PFM-42B2/H  
PFM-42V1/B  
PFM-42V1/S  
PFM-42V1P/B  
PFM-42V1A/S

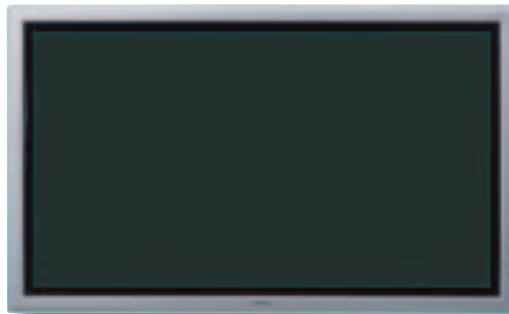
## FEATURES AND BENEFITS



PFM-50C1



PFM-42B2



PFM-42V1

## Make Your Digital Signage And Presentations More Powerful With Sony Plasma Displays

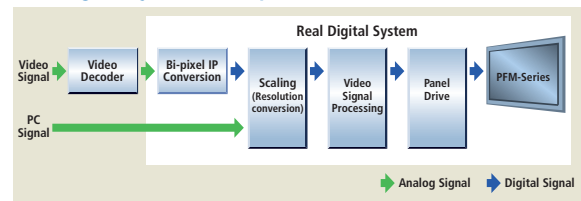
The PFM-42V1 incorporates a WVGA plasma display panel that achieves a high brightness and high contrast ratio. Its slim and lightweight design combined with precise images and smooth picture edges make it ideal for digital signage at retail stores, shopping malls, airports, train stations, entertainment venues, hospitality rooms - and anywhere you need to grasp the attention of visitors.

The PFM-50C1 and PFM-42B2 models combine a plasma display panel with XGA resolution, to produce clearer and more legible images of small characters, which makes these displays ideal for video presentations and meetings to gain your audiences' attention.

### Superior Image Quality

With Sony's Real Digital System technology, all signals are processed digitally to reproduce highly accurate images. A bi-pixel I/P (Interlace/Progressive) conversion circuit, developed exclusively for Sony plasma displays, converts interlaced signals to progressive images of a higher definition quality. For film-originated sources, the Cinema Drive function (3-2 pull-down technology) is incorporated to naturally reproduce scene movement.

#### Real Digital System Concept Chart



\* The combination of a high-quality plasma display panel and excellent I/P conversion technology produces clear and smooth images.

### Digital Video Input (DVI-D)

The DVI input function offers a high picture quality when used with a DVI-equipped PC (DVI video cable is supplied).



NOTE: These icons indicate which features are available for each model.



**PFM 50 PFM 42B2 PFM 42V1** **Anti-Reflection, Protective Panel**

The anti-reflection (AR) coating on the glass protection panel reduces light reflection for clear, high-contrast picture viewing.

**PFM 50 PFM 42B2 PFM 42V1** **Multiple Inputs and High-Performance Scan Converter**

The PlasmaPro Series utilizes 16:9 aspect ratio flat panels that provide smooth, high-quality images across the entire screen. Display signals range from standard SDTV\* to HDTV, and RGB computer signals with resolutions up to UXGA. A range of optional input adapters is available, providing convenient system flexibility. In addition, an integrated high-performance scan converter provides accurate pixel-by-pixel image reproduction, offering optimum image quality whatever the signal format.

**PFM 50 PFM 42B2 PFM 42V1** **Versatile and Stylish Design**

With its simple yet sophisticated appearance, the PlasmaPro Series offers a stylish, high-impact way to convey graphical messages.

With excellent installation flexibility, these slim and lightweight displays provide large, superb-quality images in minimal space.

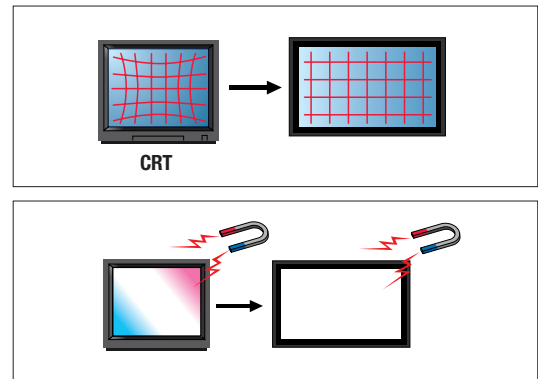
- \* The bezel of the PFM-42B2 is available in warm silver or dark gray.
- \* The bezel of the PFM-50C1 is available in cool silver.
- \* The bezel of the PFM-42V1 is available in cool silver or bluish black. There is also a vertical bezel version (PFM-42V1P/B) available in bluish black and a high altitude model (PFM-42V1A/S) in cool silver.

**PFM 50 PFM 42V1** **High-Quality Digital Audio Amplifier**

These two models give exceptionally clear audio reproduction due to their high-quality integrated digital amplifiers. In addition, the amplifiers feed Speaker Out (L/R) connectors so that optional speakers can be connected - further enhancing audio performance and quality.

**PFM 50 PFM 42B2 PFM 42V1** **Flat Panel Image Advantages**

- Flat panel displays produce an accurate image geometry due to the linear alignment of the pixels.
- Unlike conventional CRTs, flat panel displays are resistant to magnetic fields - providing drift-free color uniformity.



**PFM 50 PFM 42B2 PFM 42V1** **Mounting Flexibility**

All models can be mounted in various positions to meet different user applications - whether placed on the optional stand\*, installed on a wall, or hung from a ceiling. They can also be mounted horizontally or vertically.

\* Optional stands SPM-TRI/S (silver), SPM-TRI/B (black), and SPM-TRI/C (clear) are available for all of the plasma displays.

**PFM 50 PFM 42B2 PFM 42V1** **Selectable Aspect Ratio**

Aspect ratios can be selected from Widescreen 16:9 (Full), Wide Zoom (Expanded 4:3), Letter Box Zoom, or Standard 4:3 displays. The PFM-50C1 and PFM-42V1 displays additionally provide a Subtitle mode.



### PFM 50 PFM 42B2 PFM 42V1 Easy-To-Use Remote Control

Easy display control is provided with a supplied remote control unit.

\* RM-971 for the PFM-50C1 and PFM-42V1, RM-42B for the PFM-42B2.

\* Plasma Pro Series displays also offer RS-232C control.

### PFM 50 PFM 42B2 PFM 42V1 Precise Color Temperature Control

Up to three color temperature settings can be registered with the PFM-50C1 and PFM-42V1, and up to six settings with the PFM-42B2 to meet the specific needs of your display environment.

### PFM 50 PFM 42B2 PFM 42V1 Picture Zoom Control

Zoom in to a section of a picture for a closer look using the Picture Zoom Control function. This also allows up to 16 units arranged in a 4 by 4 matrix to be used in video-wall applications.

### PFM 50 PFM 42B2 PFM 42V1 Dot Phase Adjustment (for analog RGB input from a PC)

The sampling phase for signal digitizing can be precisely adjusted to the input RGB analog signal, creating clearer pictures. When the display receives an input signal, it automatically adjusts the picture's sharpness (phase/pitch) and ensures that a clear picture appears on the screen. Users can also adjust the setting manually.

### PFM 50 PFM 42B2 PFM 42V1 Size and Position Adjustment

If a picture is not properly sized or correctly positioned on the screen, the size and position of the image can be manually adjusted.

### PFM 50 PFM 42B2 PFM 42V1 Picture Setting Memory

Up to 20 individual patterns of picture settings can be saved and loaded. This function is convenient for multiple users to operate the display. The following settings are available.

- |                      |                          |                  |
|----------------------|--------------------------|------------------|
| •Contrast            | •Brightness              | •Chroma          |
| •Phase               | •Sharpness               | •Noise Reduction |
| •Color Temperature   | •Color Correct           | •Gamma Correct   |
| •Resize and Position | •Aspect Ratio Adjustment |                  |
| •Pixel Adjustment    |                          |                  |

### PFM 50 PFM 42B2 PFM 42V1 Six-Language On-Screen Display

A quick and simple setup is available in English, French, German, Italian, Spanish, and Japanese.

### PFM 50 PFM 42B2 PFM 42V1 Closed Caption Decoder

This enables the closed caption data embedded in a video signal to be displayed.

### PFM 50 PFM 42B2 PFM 42V1 Screen Saver

Residual images are reduced effectively with Picture Orbiting and Picture Inversion.

### PFM 50 PFM 42B2 PFM 42V1 Energy-Saving Mode

The energy-saving mode decreases the power consumption by reducing the emission level of the Plasma panel saving cost throughout the lifespan of the display.

### PFM 50 PFM 42B2 PFM 42V1 24-Hour On/Off Timer

The power can conveniently be turned on and off using the built-in 24-hour on/off timer.

### PFM 50 PFM 42B2 PFM 42V1 Picture Modes

The PFM series offers several pictures modes to allow images to be displayed according to different user preferences and viewing environments. Two factory presets; Standard Mode and Vivid Mode, allow for quick and easy display setup. Also available are three User Modes for storage of user defined settings.

### PFM 50 PFM 42B2 PFM 42V1 Auto Wide Function

The Auto Wide function automatically enlarges the video image to fill the 16:9 wide aspect screen.

### PFM 50 PFM 42B2 PFM 42V1 Worldwide Power Supply

# OPTIONAL ACCESSORIES



**PFM 42V1**  
**BKM-V11**  
Component/RGB Input Adapter  
•YUV input  
•Audio input (x1)



**PFM 42B2**  
**BKM-B12**  
Component Video Input Adapter  
•Component input  
•Control-S input/output



**PFM 42B2**  
**BKM-B13**  
Composite Video Input and Control-S Adapter  
•Composite input/output  
•Y/C input  
•Control-S input/output

---



**PFM 50**  
**SS-SP10A**  
Speaker System



**PFM 42V1**  
**SS-SP20B**  
Speaker System  
\* Available in bluish black or cool silver.



**PFM 50** **PFM 42B2** **PFM 42V1**  
**PLP-91/C**  
Wall Mount Kit  
Provides automatic tilt for angled viewing.

---



**PFM 50** **PFM 42B2** **PFM 42V1**  
**WALL BRACKET**  
Adaptable wall mount, allows tilt of up to 10 degrees



**PFM 50** **PFM 42B2** **PFM 42V1**  
**SPM-TRI/S (shown)**  
**SPM-TRI/B**  
**SPM-TRI/C**  
Table top stand for PlasmaPro  
•Available in silver, black and clear acrylic

# MAJOR PRESET SIGNALS

VIDEO	fH (kHz)	Frame rate* (Hz)	Resolution (Active)
● NTSC	15.734	60	480 lines
● PAL	15.625	50	575 lines
● SECAM	15.625	50	575 lines
● NTSC <sub>4.43</sub>	15.734	60	480 lines
● PAL60	15.734	60	480 lines
● PAL-M	15.734	60	480 lines
● PAL-N*2	15.734	60	480 lines
● 575/50I	15.625	50	575 lines
● 480/60I	15.734	60	480 lines
● 1080/24PsF	27.000	24	1080 lines
● 1080/50I	28.125	50	1080 lines
● 576/50P	31.250	50	576 lines
● 480/60P	31.469	60	480 lines
● 1080/60I	33.750	60	1080 lines
● 720/60P	45.000	60	720 lines

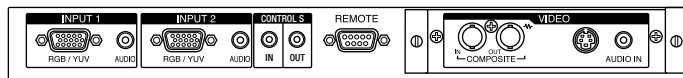
  

COMPUTER INPUT	fH (kHz)	fV (Hz)	Resolution (Active)
● VGA-1 (VGA 350)	31.5	70	640 x 480 dots
● 640 x 350 @85 (VESA STD)	37.9	85	640 x 350 dots
● 640 x 400 @85 (VESA STD)	37.9	85	640 x 400 dots
● 640 x 480 @60 (VESA STD)	31.5	60	640 x 480 dots
● Mac 13"	35.0	67	640 x 480 dots
● 640 x 480 @72 (VESA STD)	37.9	72	640 x 480 dots
● 640 x 480 @75 (VESA STD)	37.5	75	640 x 480 dots
● 640 x 480 @85 (VESA STD)	43.3	85	640 x 480 dots
● 852 x 480 @60 (I-O DATA)*3	31.7	60	852 x 480 dots
● VGA (VGA TEXT)	31.5	70	720 x 400 dots
● 720 x 400 @85 (VESA STD)	37.9	85	720 x 400 dots
● 800 x 600 @56 (VESA STD)	35.2	56	800 x 600 dots
● 800 x 600 @60 (VESA STD)	37.9	60	800 x 600 dots
● 800 x 600 @72 (VESA STD)	48.1	72	800 x 600 dots
● 800 x 600 @75 (VESA STD)	46.9	75	800 x 600 dots
● 800 x 600 @85 (VESA STD)	53.7	85	800 x 600 dots
● Mac 16"	49.7	75	832 x 624 dots
● 1024 x 768 @60 (VESA STD)	48.4	60	1024 x 768 dots
● 1024 x 768 @70 (VESA STD)	56.5	70	1024 x 768 dots
● 1024 x 768 @75 (VESA STD)	60.0	75	1024 x 768 dots
● 1024 x 768 @85 (VESA STD)	68.7	85	1024 x 768 dots
● 1152 x 864 @75 (VESA STD)	67.5	75	1152 x 864 dots
● Mac 21"	68.7	75	1152 x 870 dots
● 1280 x 960 @60 (VESA STD)	60.0	60	1280 x 960 dots
● 1280 x 960 @85 (VESA STD)	85.9	85	1280 x 960 dots
● 1280 x 1024 @60 (VESA STD)	64.0	60	1280 x 1024 dots
● 1280 x 1024 @75 (VESA STD)	80.0	75	1280 x 1024 dots
● 1280 x 1024 @85 (VESA STD)*4	91.1	85	1280 x 1024 dots
● 1600 x 1200 @60 (VESA STD)*5 *7	75.0	60	1600 x 1200 dots
● 856 x 480 @60 (Matrox)*6	30.2	60	856 x 480 dots
● 856 x 480 @59.6 (Matrox)*6	30.1	59.6	856 x 480 dots
● 856 x 480 @60.1 (Matrox)*6	30.1	60.1	856 x 480 dots
● 848 x 480 @60 (VESA STD)*7	29.8	60	848 x 480 dots
● 848 x 480 @60 (VESA STD)	29.5	60	848 x 480 dots
● 848 x 480 @75	37.7	75	848 x 480 dots
● 1280 x 768 @60	47.8	60	1280 x 768 dots
● 1280 x 768 @60	47.4	60	1280 x 768 dots

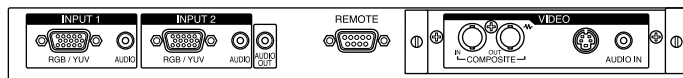
\*1 Compatible with 1/1.001  
 \*2 Applicable to PFM-50C1  
 \*3 With a graphics accelerator board from I-O Data Device, Inc.  
 \*4 Applicable to PFM-42B1 and PFM-50C1  
 \*5 Dot phase adjustment not applicable to UXGA resolution (1600 x 1200)  
 \*6 With a graphics card from Matrox Graphics Inc.  
 \*7 The DVI-D does not accept these signals.

- PFM-42B2, PFM-50C1
- PFM-42V1

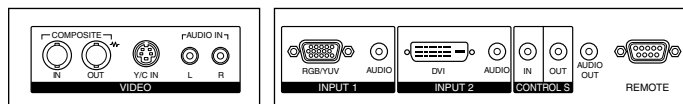
## Connector Panel



PFM-50C1 Control Panel.



PFM-42B2 Control Panel.



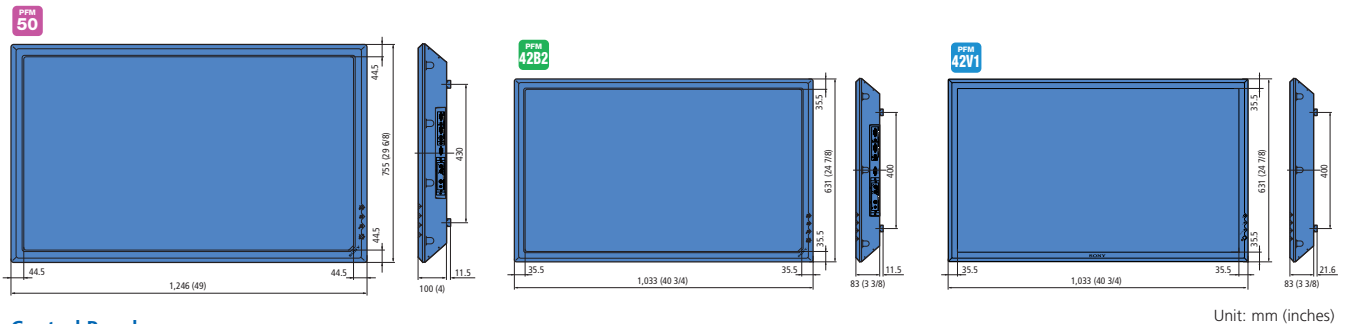
PFM-42V1 Control Panel.

# SPECIFICATIONS

Picture Performance	PFM-50C1	PFM-42B2	PFM-42V1
Panel	Resolution 1365 x 768 pixels	1024 x 1024 pixels	852 x 480 pixels
	Pixel pitch 0.81 x 0.81 mm	0.90 x 0.51 mm	1.08 x 1.08 mm
	Active area (W/H) 1,106 x 622 mm	921 x 522 mm	920 x 518 mm
	Viewable picture area 50-inch/1,270 mm (measured diagonally)	42-inch/1,058 mm (measured diagonally)	
	Colors 16.8 million colors simultaneously		
	Type AC-type Plasma Display Panel with anti-reflection screen		
Color system	NTSC, PAL, SECAM, NTSC4.43, PAL60, PAL-M, PAL-N	NTSC, PAL, SECAM, NTSC4.43, PAL60, PAL-M	NTSC, PAL, SECAM, NTSC4.43, PAL60, PAL-M, PAL-N
Sampling rate	13.5 to 140 MHz		
<b>Input/Output</b>			
INPUT1	D-sub 15-pin		
	0.7 Vp-p/non composite, 1.0 Vp-p composite, 75 Ω		
	0.7 Vp-p/non composite (U/V), 1.0 Vp-p/composite (Y), 75 Ω		
	Stereo mini jack, 500 mVrms, high impedance		
INPUT2	D-sub 15-pin		DVI-D
	0.7 Vp-p/non composite, 1.0 Vp-p composite, 75 Ω		—
	0.7 Vp-p/non composite (U/V), 1.0 Vp-p/composite (Y), 75 Ω		—
	Stereo mini jack, 500 mVrms, high impedance		
VIDEO	BNC, 1.0 Vp-p ±2 dB sync negative, 75 Ω automatic termination		
COMPOSITE IN	Mini DIN 4-pin		
Y/C IN	Y: 1.0 Vp-p ±2 dB sync negative, 75 Ω automatic termination C: 0.286 Vp-p ±2 dB sync negative (NTSC), 75 Ω 0.3 Vp-p ±2 dB sync negative (PAL), 75 Ω		
AUDIO IN	Stereo mini jack, 500 mVrms, high impedance		Phono jack (L/R), 500 mVrms, high impedance
COMPOSITE OUT	BNC, loop-through		
AUDIO OUT	Stereo mini jack, 500 mVrms, high impedance		
REMOTE (RS-232C)	D-sub 9-pin		
<b>General</b>			
Power requirements	AC 100 to 240 V, 50/60 Hz, 5.4 to 2.2 A	AC 100 to 240 V, 50/60 Hz, 4.2 to 1.5 A	AC 100 to 240 V, 50/60 Hz, 3.7 to 1.5 A
Power consumption	490 W	360 W	360 W
Operating temperature	32 to 95 °F (0 to 35 °C)		
Storage temperature	14 to 104 °F (-10 to 40 °C)		
Humidity	20 to 90 %, no condensation		
Dimensions** (W/H/D)	49 x 29 6/8 x 4 inches (1,246 x 755 x 100 mm)	40 3/4 x 24 7/8 x 3 3/8 inches (1,033 x 631 x 83 mm)	
Weight	103 lb 9 oz (46.7 kg)	62 lb 9 oz (28.4 kg)	59 lb 8 oz (27.0 kg)
<b>Supplied Accessories</b>			
	AC Power Cord, AC Plug Holder (2), AA/R6 size Battery (2), Cable Holder A (2), Cable Holder B (4), Operating Instructions		DVI-D Cable, AC Power Cord, AC Plug Holder (2), AA/R6 size Battery (2), Cable Holder (4), Operating Instructions
	Remote Commander RM-971	Remote Commander RM-42B	Remote Commander RM-971
<b>Regulation Compliance</b>			
	UL1950, CSA No.950 (c-UL), CE LVD (EN60950), FCC Class B, IC Class B, VCCI Class B, CE EMC (EN55022 Class-B, EN55024, EN61000-3-2, EN61000-3-3), C-Tick (AS/NZS 3548/95, AS/NZS 4252.1), CCIB, JEIDA, CB, KTL, MIC		

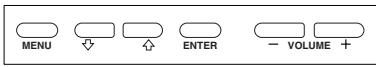
## Dimensions

\*2 Excluding protruding parts.

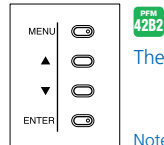


Unit: mm (inches)

## Control Panel



PFM 50 PFM 42V1 The control panel is located on the top of the unit.



The control panel is located on the rear of the unit.

Note: The power switch is positioned on the front of the display.

# SONY®

Sony Electronics Inc.  
16450 West Bernardo Drive  
San Diego, CA 92127  
www.sony.com/plasma

©2003 Sony Corporation. All rights reserved.  
Reproduction in whole or in part without permission is prohibited.  
Features and specifications are subject to change without notice.  
All non-metric weights and measures are approximate.  
Sony is a registered trademark of Sony Corporation.  
All other trademarks are the property of their respective owners.