

SONY

COLOR CAMERA BLOCK

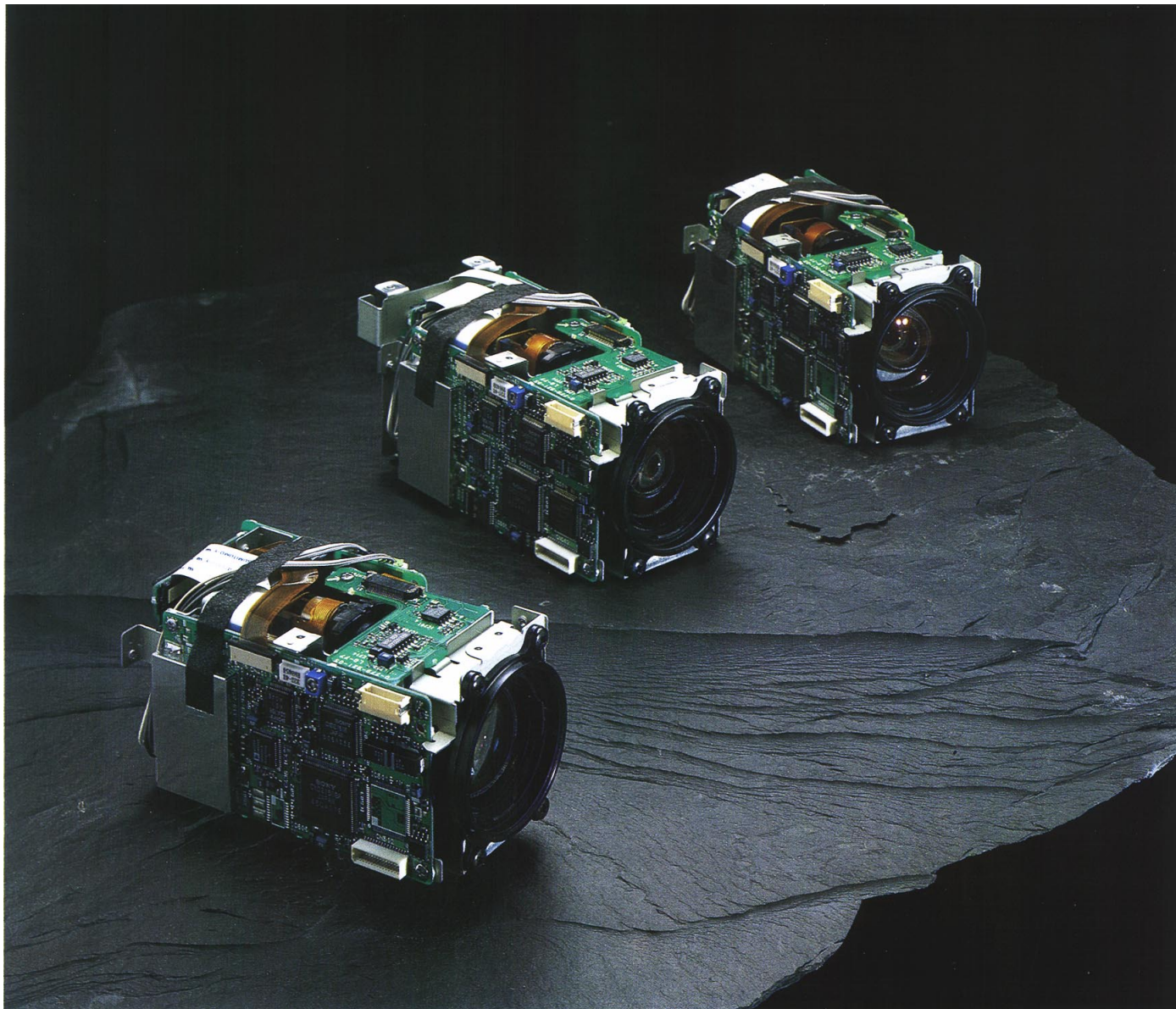
for Visual Communication

EVI-330/331/T

Component/OEM



1/3" CCD
768(H)×494(V)/NTSC
752(H)×582(V)/PAL



- ×12 Optical Zoom, High-Speed Auto-Focus Lens
- Macro AF
- ×24 Digital Zoom (EVI-330T/EVI-331T)
- Electronic Image Stabilizing(EVI-330T-331T)
- Position Preset Function
- RS-232C Serial Control (Option)
- S-Video, Composite Output

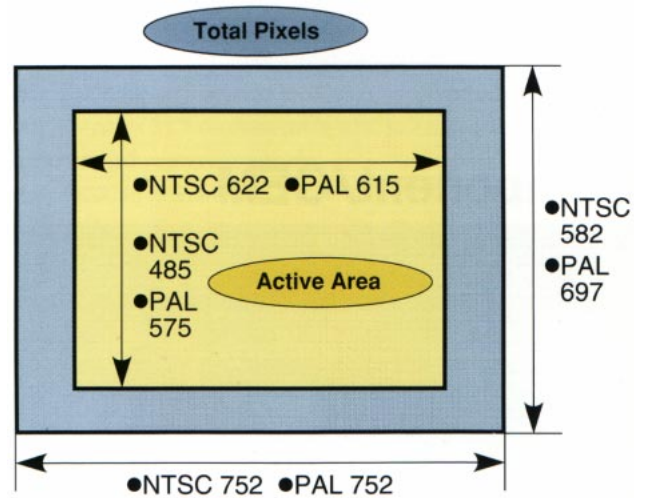
Electronic Image Stabilizing (EVI-330T/331T)

The EVI-330T/331T features an "electronic image stabilizing" system.

Sensors positioned horizontally and vertically detect movement caused by the camera and adjust the active screen area in order to display images on the CCD with minimal vibration.

Both the EVI-330T(NTSC)and the EVI-331T utilize CCDs which are approximately 1.2 times larger than the standard NTSC or PAL imagers but the overall effective pixels are 300,000(EVI-330T)and 350,000(EVI-331T).

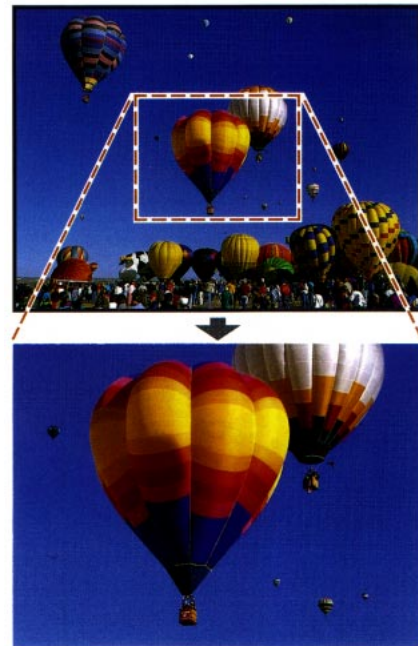
Electronic Image Stabilization can be selected or deselected by the ON/OFF switch located on the camera itself.



Digital Zoom (EVI-330T/331T)

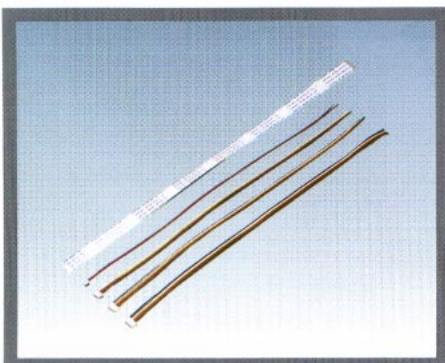
The EVI-330T/331T adopts a 2X digital zoom feature that enables the image to be enlarged in both the horizontal and vertical planes. The digital zoom is automatically activated at the 12X optical zoom limit.

Because the Digital Zoom enlarges in both directions by a factor of two the effective pixel area is reduced to 1/4 of the original size thus losing resolution but offering tremendously exciting pictures.



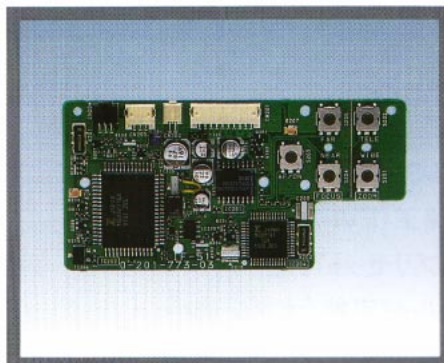
Supplied Accessory

Cables

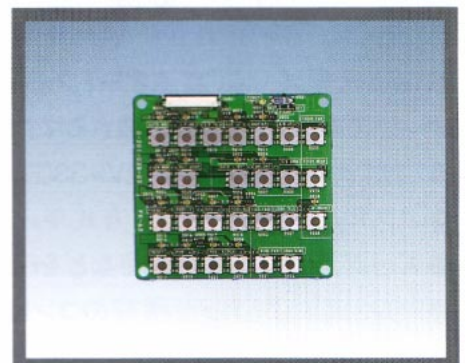


Optional Accessory

IF-51/Interface Board



FK-63/Switch Board

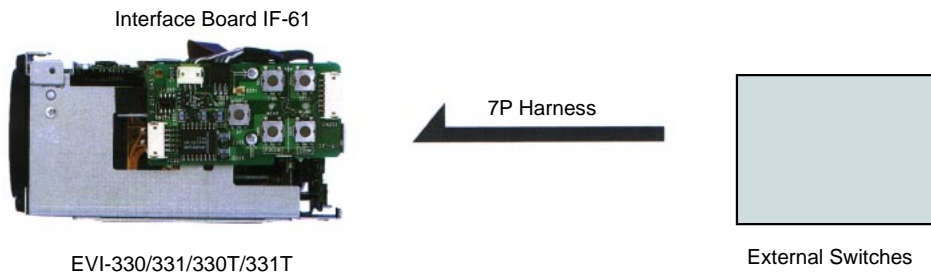


Camera Control

EVI-330/331/330T/331T can be remote controlled

● IF-61 ●

By using IF-61 switch that is mounted at the side of EVI-330/331/330T/331T, it is possible to control Zoom and Focus. External switches can be connected to a 7p connector CN202 for same control



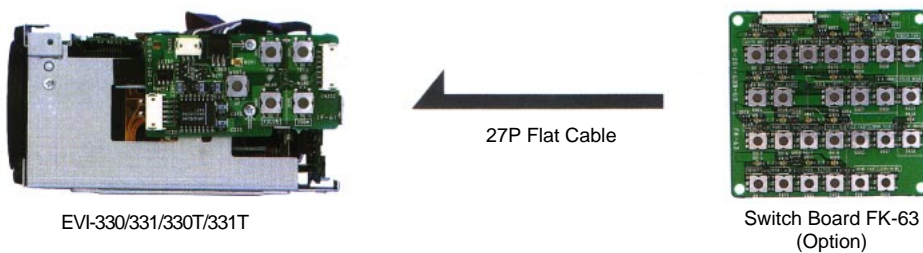
Controllable Function ●Zoom Tele/Wide ●Auto Focus ON/OFF ●Focus Far/Near

● VISCA™/RS-232C ●



Controllable Function ●Zoom Tele/Wide ●Zoom Position Preset/Detect ●Auto Focus ON/OFF ●Focus Far/Near ●White Balance Mode Selection ●White Balance Mode Detection ●Bright Control Up/Down ●Shutter Speed Up/Down ●Shutter Priority Preset/Detect ●Iris Status Detect ●Gain Status Detect ●Position Preset/Reset ●Position Preset/Detect

● Switch Board FK-63 ●



Controllable Function ●Zoom Tele/Wide ●Zoom Fast Tele/Wide ●Auto Focus ON/OFF ●Focus Far/Near ●White Balance Mode Selection ●Bright Control Up/Down ●Back Light Compensation Preset/Detect ●Shutter Speed Up/Down ●Position Preset/Reset

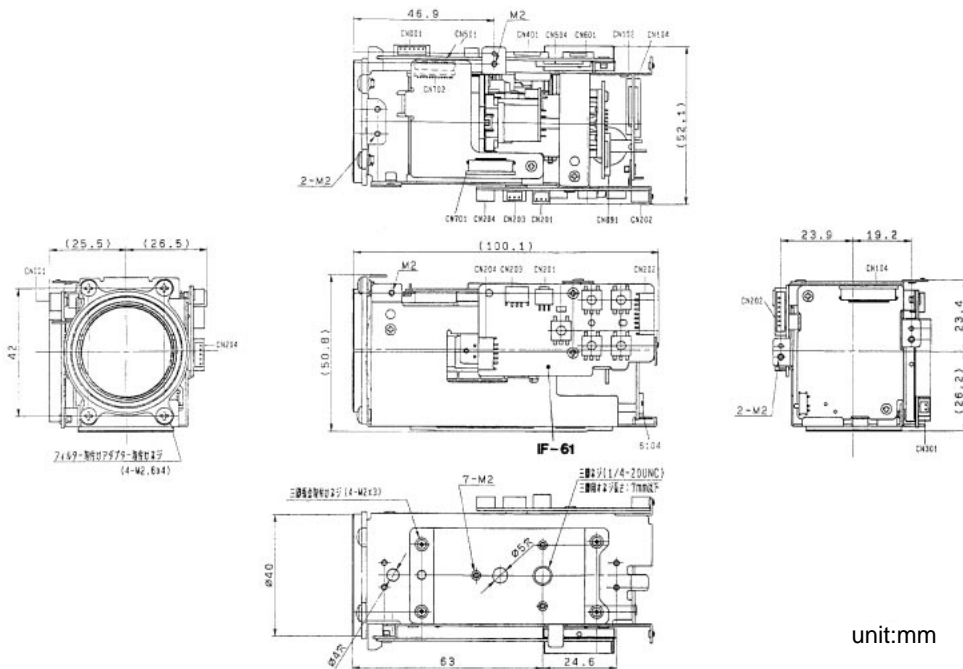
*VISCA is an acronym of Video System Control Architecture. It is networking protocol designed to interface a wide variety of video equipment to a computer. "VISCA" is a trademarks of Sony Corporation.

SPECIFICATION

	EVI-330(NTSC)	EVI-331(PAL)	EVI-330T(NTSC)	EVI-331T(PAL)
Image Sensor	1/3"IT CCD			
Pixels / Effective Pixels	410K/380K pixels	470K/440K pixels	470K/300K pixels	570K/350K pixels
Picture Elements	768(H)×494(V)	752(H)×582(V)	622(H)×485(V)	615(H)×575(V)
H. Resolution (Center)	more than 460 TV lines	more than 450TV lines	more than 380TV lines	more than 380TV lines
V. Resolution (Center)	more than 350TV lines	more than 400TV lines	more than 350TV lines	more than 400TV lines
Lens	12×Zoom f=5.4 to 64.8mm F1.8~2.7 Wide Macro, Auto Focus (Inner Focus System)			
E. Zoom	(2×12=)24×Zoom			
Angle of View	(H)	approx 48.8 degrees (wide end) to 4.3 degrees (tele end)	approx 41.4 degrees (wide end) to 3.7 degrees (tele end)	
	(V)	approx 37.6 degrees (wide end) to 3.3 degrees (tele end)	approx 31.7 degrees (wide end) to 2.8 degrees (tele end)	
Lens constructure	9 elements in 6 groups (including 2 aspherical lenses)			
Shortest Subject Dist.	10mm (wide end):800mm (tele end)			
Video Out (75Ω Terminated)	Y:VS1.0Vp-p sync negative C:Burst 0.286Vp-p VBS:1.0Vp-p composite	Y:VS1.0Vp-p sync negative C:Burst 0.300Vp-p VBS:1.0Vp-p composite	Y:VS1.0Vp-p sync negative C:Burst 0.286Vp-p VBS:1.0Vp-p composite	Y:VS1.0Vp-p sync negative C:Burst 0.300Vp-p VBS:1.0Vp-p composite
Min.Illumination	7 lx F1.8(more than 50 IRE)			
S/N Ratio	more than 48dB			
White Balance	TTL Auto tracing, One push Hold, indoor Preset, Outdoor Preset			
Electronic Shutter	28 step(1/60 sec. up to1/10000 sec.)	28 step(1/50 sec. up to1/10000 sec.)	28 step(1/60 sec. up to1/10000 sec.)	28 step(1/50 sec. up to1/10000 sec.)
Flickerless	Auto			
Operating Temperature	0°C to 50°C			
Storage Temperature	-20°C to 60°C			
Operating Humidity	30% to 85%			
Storage Humidity	20% to 90%			
Power Requirements	DC 6 to 12V (normal 2.4W, Lens drive state 3.2W/6V DC)		DC 6 to 12V (normal 2.6W, Lens drive state 3.4W/6V DC)	
Dimensions(W/H/D)	53×51×100mm		53×51×111mm	
Weight	220g		230g	
Spurious radiation	FCC Class A			
Supplied accessory	2P harness, 5P harness, 6P harness, 7P harness, 27P flat cable			

DIMENSIONS

EVI-330/331



unit:mm

● Sony Electronics Inc. (USA) HQ

1 Sony Drive Park Ridge, NJ 07656

(TEL:+1-201-930-7451) (FAX:+1-201-358-4401)

<http://www.sony.com/professional>

● Sony of Canada Ltd. (CANADA)

411 Gordon Baker Road, Willowdale, Ontario M2H 2S6

(TEL:+1-416-499-1414) (FAX:+1-416-497-1774)

● Sony Broadcast & Professional Europe HQ

15, rue Floreal 75831 Paris Cedex 17, France

(TEL:+33-1-40-87-35-11) (FAX:+33-1-40-87-35-17)

<http://www.bpe.sony-europe.com>

Germany

Hugo-Eckener-Str. 20, 50829 Köln

(TEL:+49-221-5966-322) (FAX:+49-221-5966-491)

France

15, rue Floreal 75831 Paris Cedex 17

(TEL:+33-1-49-45-41-62) (FAX:+33-1-47-31-13-57)

UK

The Heights, Brooklands, Weybridge, Surrey KT13 0XW

(TEL:+44-990-331122) (FAX:+44-1932-817011)

Nordic

Per Albin Hanssons vag 20 S-214 32 Malmo Sweden

(TEL:+46-40-190-800) (FAX:+46-40-190-450)

Italy

Via Galileo Galilei 40 I-20092 Cinisello Balsamo, Milano

(TEL:+39-2-618-38-431) (FAX:+39-2-618-38-402)

● Sony Corp. B&P Systems Co. ISP Dpt. (JAPAN)

4-16-1 Okata, Atsugi-shi, Kanagawa-Ken, 243-0021

(TEL:+81-462-27-2345) (FAX:+81-462-27-2347)