



## EditStation™

# ES-7

# V2.0

## New Features of V2.0 Software

### **Powerful and Advanced Features**

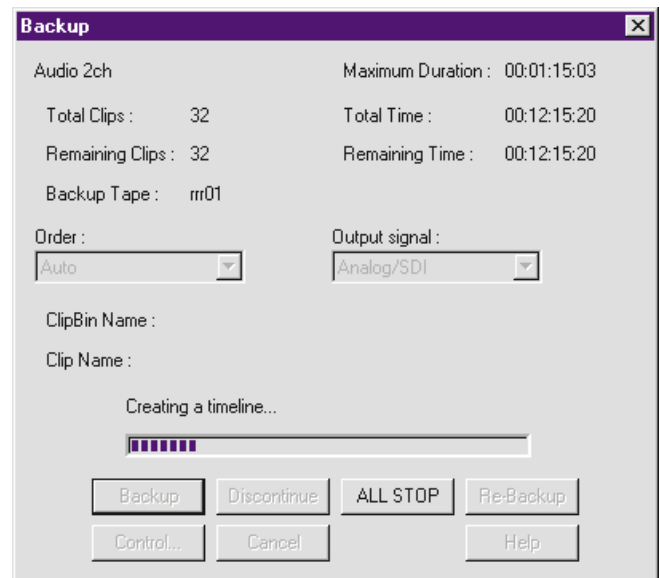
New features of this V2.0 software greatly extend the advantages of non-linear editing.

#### **High Speed Backup/Restore**

You can now digitally 4x speed backup and restore video and audio data between external disk units directly using DVCAM™ cassettes in the Sony DSR-85/P connected via the SDTI (QSDI™) interface. Since backup and restore take advantage of the Direct Digital Link between the ES-7 and DVCAM materials, high quality backup with virtually no signal degradation is assured.

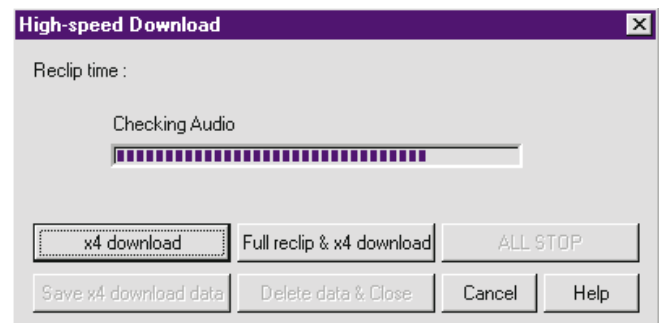
In addition, other digital VTRs or even analog VTRs can be used as backup VTRs. It is more cost-effective to store video/audio data on video media instead of computer media.

\*Note) Project files from the internal OS drive are backed up using conventional PC storage media.



#### **4x Speed Downloading**

Advanced 4x speed downloading is available in QSDI Direct mode using the Sony DSR-85/P as a recorder. If there are effects, audio rubberband or titles in the TimeLine, you should use the ReClip function throughout, because your Switcher, Audio Mixer and Titler cannot run at 4x speed. It is therefore more efficient to download the second or third video package since ReClipping is not required for more than second copy.



## BackGround Operation

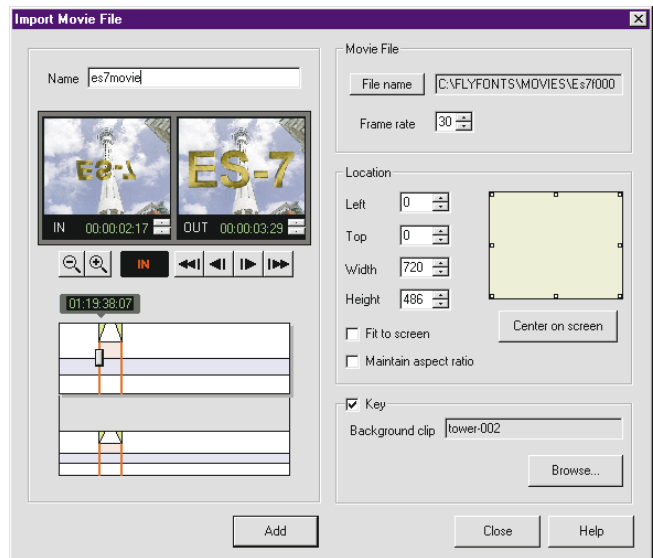
This innovative feature that can save you a vast amount of time. While video/audio data is uploaded to disk using

QSDI Direct mode (including 4x speed upload), you can simultaneously create titles using the ESDraw™ software.

## Movie and Animation File Import/Export

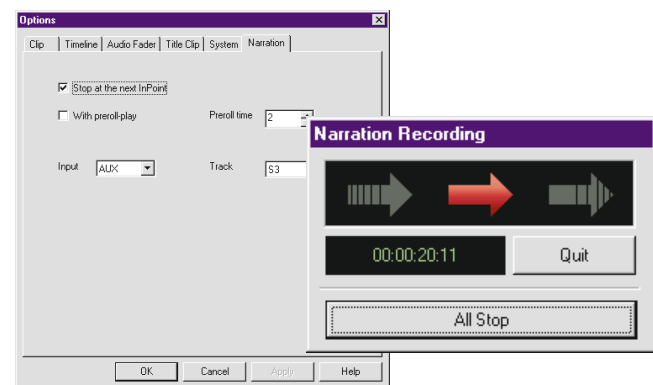
The ES-7 allows you to use multimedia materials such as computer graphics to create more attractive, high impact productions. AVI, QuickTime® and sequential TGA (with alpha-channel) files can be imported into the system as video clips. The sequence on the TimeLine image can also be exported to movie files, such as AVI, QuickTime and sequential TGA files.

\*Note) This function requires QuickTime software to be installed.



## Narration Recording

Users can now record a narration voice on any sound track on the TimeLine, and even preview the picture while narration is being recorded to disk in real-time. You can listen to previously recorded narration using Preview; this makes it easy to re-narrate from any point.



## Insert and Replace on Recorded Tapes

Occasionally, editors are asked to replace a particular portion of a completed tape because of an incorrect title, inappropriate picture or similar problem. This kind of change is extremely time-consuming with non-linear editing systems. With the ES-7, however, it is easy to insert sequences into the master tape without uploading to

a disk\* - a convenient and precise solution to last-minute requests for tape amendment.

\*Note) This function requires more than two VTRs to be connected.

## Manual Upload

This new feature allows you to upload without setting Mark IN/OUT points. It is convenient for direct uploading

from video cameras and media packages that have no TimeCode.

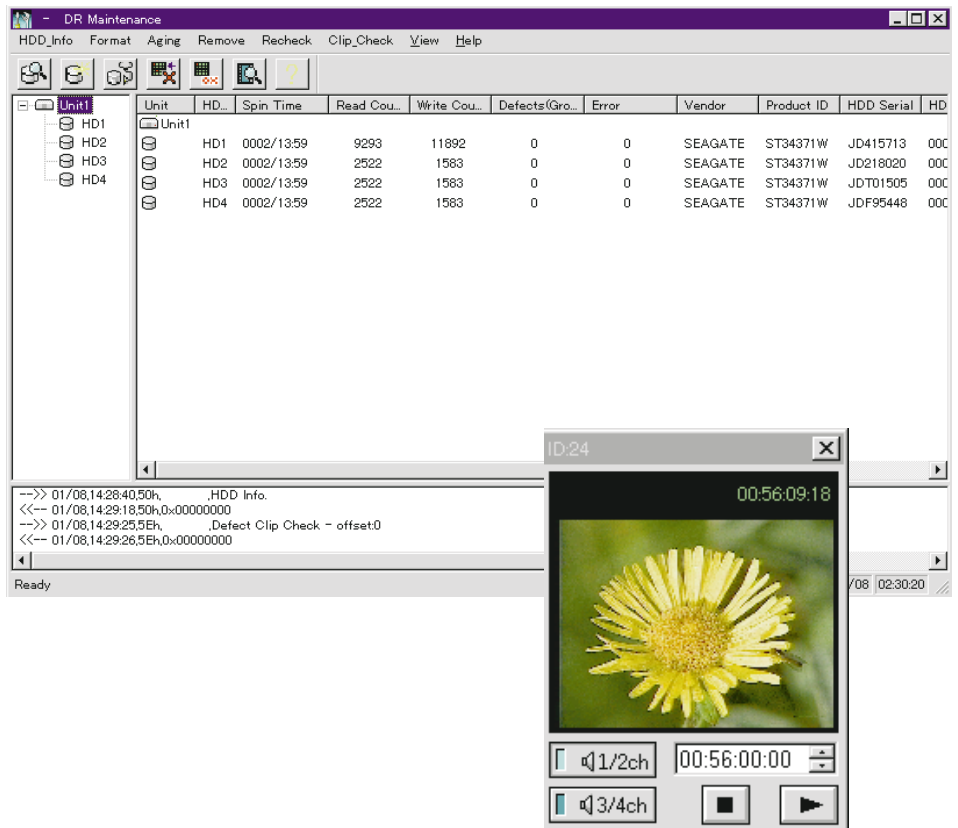
## Color Correction for Uploaded Clips

Color correction is available for uploaded clips. The ReClip processes are automatically executed when you press the ADD button.

## DR Maintenance Tool

This tool maintains the hard disk drive (HDD) inside the Sony ESBK-7045 Disk Unit. Without specialist assistance, the user can easily check any damaged disk sectors. Functions are as follows:

- \*Get HDD information (HDD Info)
- \*HDD Format (HDD Format)
- \*Damaged Block Detection (Aging)
- \*Error Block Registration (Remove)
- \*Error Block Re-check and Registration (Re-check)
- \*Clip Check (Clip Check)



## Integrated TimeLine Editing

Improved TimeLine editing to greatly enhance your productivity.

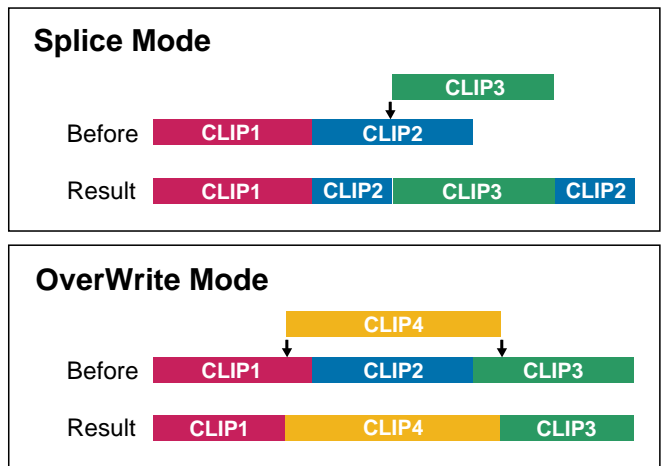
The screenshot displays the Sony1 EditStation ES-7 interface. At the top, there's a menu bar (File, Edit, View, Mark In/Out, Track, Execute, Trim, Audio, Clip, Tools, Settings, Window, Help) and a toolbar. Below is a clip shelf with various assets like 'train', 'jump', 'wht flower', 'ylw flower', 'red flower', 'green nut', 'lake', 'wall1', 'downtown', 'tower', 'sign', 'ship', 'yacht', 'dragon boat', 'yacht harbor', 'event', 'BGM1-5', 'NA', 'NA-001', 'NA-002'. The main workspace shows a multi-track timeline with tracks for V1, V2, DSK, S1-S4, and S3/S4 Fdr. A 'New TimeLine Window' is highlighted in blue, showing a detailed view of the 'jump' clip on track V1. Annotations point to various editing features: 'SyncLock' (green box), 'Track Selector' (green box), 'Source Selector' (green box), 'Mark IN/Mark out' (blue box), 'Replace' (blue box), 'Get ClipBin' (blue box), 'OverWrite/Splice Mode' (blue box), 'Slide/Slip Trim' (blue box), and 'New TimeLine Window' (blue box).

## OverWrite/Splice Mode

Two new modes – OverWrite and Splice – allow you to add clips on the TimeLine as required. These are new TimeLine editing rules.

In Splice mode, any clips already on the TimeLine ripple backwards, and the duration of the TimeLine sequence changes.

In OverWrite mode, the TimeLine sequence is overwritten. This is convenient when you do not want the duration of the TimeLine sequence to be altered.



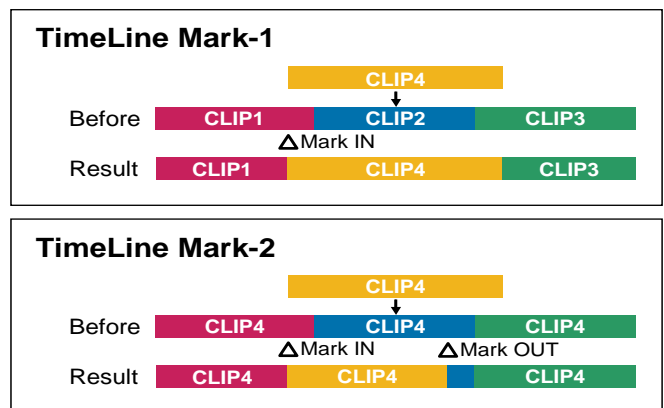
## Source Selector/Track Selector

With this new version of software (Version 2.0), TimeLine editing is subject to track-based management. This means that Source Selector and Track Selector features are provided. Use the Source Selector to assign TimeLine

tracks, on which each clip is placed. The effects of any editing are applied only to those tracks selected using the Track Selector.

## TimeLine Marking and 3-Point Editing

These features enable you to set the Mark IN/OUT points on the TimeLine as required. Using the TimeLine marking function, 3-Point editing can be undertaken. This is convenient if you are used to a conventional linear style of editing.



## SyncLock

The SyncLock function maintains synchronization between selectable tracks.

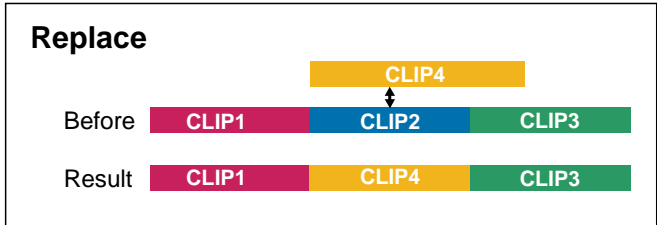
Three different settings can be activated simply by

pressing the SyncLock button:

No SyncLock, SyncLock Group1 or SyncLock Group2

## Replace

This function is very useful when changing a given clip in a group of clips aligned on the TimeLine with another clip. This maintains sequence duration and total length. User can use the Replace button with the Timeline Marking function.



## Title Clip Trimming

The title clip on the TimeLine can be trimmed. This function is available only for still titles.

## Match ClipBin

This function enables you to search the ClipBin clip from the TimeLine, and highlight the clip you require.

This makes it easy to find clips, even when there are many in the ClipBin.

## Improved Trim Function

To trim the clip on the TimeLine effectively, this latest software version incorporates new Slide and Slip capabilities. Slide trim allows you to adjust the position of a clip with reference to the proceeding/following clips and maintaining its IN/OUT points. Slip trim allows you to move the IN/OUT points of a chosen clip at the same time without affecting the surrounding clips. The duration of the chosen clip and the surrounding clips are not changed.



© 1999 Sony Corporation. All rights reserved.  
 Reproduction in whole or in part without written permission is prohibited.  
 Features and specifications are subject to change without notice.  
 Sony is a registered trademark of Sony Corporation.  
 DVCAM, EditStation, QSDI and ESDraw are trademarks of Sony Corporation.  
 All other trademarks are the property of their respective owners.