

DXC-S500

Color Digital Camera

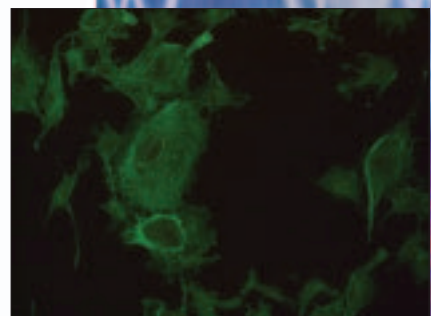
Ideal for its excellent connectivity with PCs, the DXC-S500 proves to be an ideal digital camera for microscopy. Comprised of two separate units, the DXC-S500 has a compact and lightweight camera head with a built-in Peltier cooling device, and a camera control unit with an integrated 3.5-inch (viewable area, measured diagonally) LCD monitor. The 2/3 type 5M-pixel (4.91 megapixels effective; 5.24 megapixels gross) CCD incorporated in the camera head provides ultra-high resolution images and precise color reproduction.

With excellent picture quality, sophisticated features and PC-friendly operation, the Sony DXC-S500 is the ideal system to support your medical and scientific microscopy applications.



- Superb picture quality (2560 x 1920)
- Built-in Peltier CCD cooling system
- Long-term exposure shooting
- IEEE-1394 interface
- PC card slot for on-board image storage
- TWAIN driver
- Analog video output
- Selectable image size and recording format
- User-friendly operation
- UL-2601 Listed

SONY®



Sony Medical

DXC-S500

CCD

Pick-Up Device	2/3 type IT (Interlined Transfer) CCD, interlaced scan
Color Filter	RGB primary color filter
Pixel Number	4.91 megapixels effective (5.24M pixels gross), 2658 (H) x 1970 (V)
Recording Pixel Elements	2560 (H) x 1920 (V)
CCD Size	9.74mm(H) x 7.69mm(V) Square pixels

CAMERA SYSTEM

Lens Mount	C mount
Flange Back	17.526mm in air
CCD Cooling	Cooled to 5 degrees (room temperature 0 ~ 35 degrees)
ISO Rating	100/200/400 selectable or FL_mode
Gain	Auto (AGC) : 0dB, 6dB, 12dB selectable Manual : 0 ~ 12dB by 1dB step
Shutter Speed	Auto/Manual (60-1/10,000sec)/Electrical shutter
Gamma	ON/OFF
White Balance	Auto/Manual (R/B gain)
Flash	Ext: Input mode/Output mode
User File	1/2/3 switchable (3 pattern memories)
Electrical Zoom	x2 (VGA size)
Black/White	ON/OFF
Interval Recording	ON/OFF Max.24 hours
Picture Rotate	0/180 degrees selectable

LIVE PICTURE

Image Size	640 x 480 pixels
Frame Rate	30fps/25fps (PAL)
Display	Digital interface and analog video output



DXC-S500 Camera Back



DXC-S500 Back Panel



DXC-S500 Work Station

COLOR LCD DISPLAY

Display Size	3.5 inches (viewable area, measured diagonally)
Pixel Number	200K dots
Frame Rate	NTSC: 30f/s PAL: 25f/s

IMAGE RECORDING

Recording Media	PC card type removable HDD (PCMCIA-ATA type II) Max.5GB Memory Stick™ (with PC card adapter for MS) Max.128MB, Compact Flash™ (with PC card adapter for CF) Max.330MB, SmartMedia™ (with PC card adapter for SM) Max.128MB
Max. Recording Pixel Number	2560(H) x 1920(V)
Recording Pixels	3modes: 2560x1920, 1280x960, 640x480
Image File Type	TIFF, JPEG (3 mode)

SOFTWARE

TWAIN Module	Bundled: for WIN/MAC
Support OS	Windows® 98SE/ME/2000/XP, MacOS8.6/9.0/9.1/9.2
Support Application	Image-Pro Plus ver4.5 or later (for WIN) Photo shop ver5.0 or later (for WIN/MAC)

Output Signal

IEEE1394(400Mbps), 8bit YUV
VBS : 1.0Vp-p, 75ohm, sync negative
Y : 1.0Vp-p, 75ohm
C : NTSC 0.284 Vp-p, 75ohm (without sync),
PAL 0.3Vp-p, 75ohm (without sync)

Operating Temperature

-5 to 45 degrees (23 to 113 oF)

Power Supply

100 to 240V AC, 50/60Hz

Dimensions

CHU: 56 (W) x 72 (H) x 72 (D) mm
CCU: 270 (W) x 163 (H) x 79 (D) mm

Mass

CHU: 300 g (10 oz), CCU: 1.8 kg (3 lbs 15 oz)

Connectors

IEEE1394 (6-pin jack)
PC card (PCMCIA-ATA type II), VBS (BNC)
S-Video (Mini DIN 4 pin)
External trigger in (BNC), Flash out (X)
FS/TRIG IN (stereo mini jack), AC Inlet
Camera cable connector (10pin)

Supplied Accessories

Warranty Card
TWAIN Driver Software (CD-ROM), Lens Mount Cap
Camera Cable, Operation Manual
Installation Manual, AC Cable, 3pin Transfer Cable

SONY

Sony Electronics Inc.
1 Sony Drive, Park Ridge, NJ 07656

www.sony.com/medical