

SONY®

NTSC

Digital Camcorder **DSR-PD100**

i **DVCAM™**



*Simulated Picture

The Sony DSR-PD100 Handycam® style digital camcorder is a new addition to the ever-growing DVCAM™ product line-up. Within its compact and stylish body, it boasts a newly developed 3CCD-imaging device which provides excellent picture quality, and a new function – still image recording on a removable memory media. With these features, the DSR-PD100 will offer new opportunities for a variety of professional applications.



Features

Camera Features – One of the best performer in its class

■ Excellent Picture Quality

The DSR-PD100 has three and high density 1/4-inch CCD sensors, each with 380,000 pixels (effective 340,000 pixels). This newly developed 3CCD system is designed to complement the DVCAM recording format, with excellent picture quality for this class of camcorder.

■ DSP Digital Signal Processing

The DSR-PD100 incorporates 10-bit full digital signal processing from the camera to the recorder. This technology offers high stability, reliability and picture quality.

■ Progressive / Interlace Scan Switchable CCDs

The CCDs in the DSR-PD100 can be switched to scan in two ways: Interlace Scan for capturing moving images and Progressive Scan for capturing still images. The DSR-PD100 can be used as a digital still camera as well as for shooting footage.

■ Super SteadyShot® Image Stabilization

A new optical system that compensates for unwanted camera movement without reducing image quality, which is common to digital stabilizers.

■ High Zoom Ratio

A built-in 12 x zoom lens is supplemented by a 48 x digital zoom function that can provide extreme close up shots.

■ Manual Control and Full Range Auto Modes

The DSR-PD100 has manual control of modes such as focus, gain, white balance, shutter speed and so on. Auto modes are also included for quick operation.

■ Switchable 4:3 and 16:9 Recording Modes

Although the DSR-PD100 incorporates a 4:3 image sensor, it is capable of capturing 16:9 aspect ratio images by processing them digitally via the DSP.

VTR Features – Powerful Digital Recording for Professional Production

■ DVCAM Format

The DSR-PD100 records in the DVCAM format to offer superb video and audio quality, and reliability for professional use.

■ i.LINK™ (DV IN/OUT) Interface

The built-in i.LINK interface provides a single cable connection to transfer digital video and audio with virtually no generation loss.

■ 16-bit / 12-bit PCM Audio Stereo

The DSR-PD100 is capable of PCM digital recording of stereo sound in both 48 kHz mode (16-bit) and 32 kHz mode (12-bit).

■ Audio Dubbing Capability

When a recording has been made in the 12-bit mode, a stereo audio channels can be added later, while editing.



Camcorder Operation – Convenient Features and a Variety of Accessories



■ Compact and Lightweight

The DSR-PD100 is a highly portable camcorder, which weighs just 1 kg (2.2 lbs) with a battery and a tape. A magnesium alloy die cast body keeps it light but robust. This mobility is a major asset in the field of professional acquisition.

■ Still Image Recording

The DSR-PD100 can record high quality still images with the progressive scan CCDs on both tape and removable memory media.

1) Tape Photo Mode

The still images scanned in interlace or progressive scan mode can be recorded on the tape.

2) Memory Photo Mode

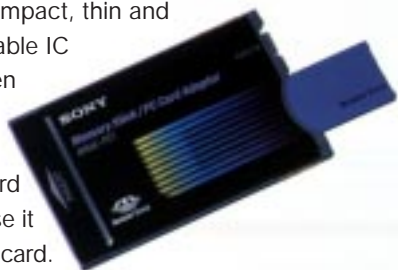
The still images scanned in the progressive scan mode are recorded onto a removable memory media. Depending on the subject, you can select the picture quality from three modes: Super Fine (SFN), Fine (FIN) or Standard (STD).

Mode	Super Fine	Fine	Standard
Number of storable images	19~23	38~45	63~75
Compression ratio	1/4	1/6	1/10

* (with the 4 MB Memory Stick)

3) Memory Stick™ Media and PC Card Adaptor

The memory card slot for a PC card is located on the rear of the unit. A PCMCIA card (ATA/type2)* and the Memory Stick** can be inserted into the slot. Sony's Memory Stick is a compact, thin and highly reliable removable IC memory media. When the Memory Stick is installed into the Memory Stick/PC Card Adaptor**, you can use it as a regular PCMCIA card.



* A PC card is not supplied.

** The 4 MB Memory Stick and Memory Stick/PC Card Adaptor are supplied.



■ Color 3.5-inch LCD Monitor

The DSR-PD100 has a large 3.5-inch color LCD monitor with 184,000 pixels, opening 90 degrees to the side and swiveling 180 degrees. It allows the user to shoot the object in low and high angle conditions while monitoring the picture. The LCD is also useful for viewing a recorded tape, or stored picture.



■ InfoLITHIUM™ Battery

The DSR-PD100 uses InfoLITHIUM battery system. The supplied NP-F330 and optional NP-F950/B batteries communicate with the camcorder so that the DSR-PD100 can indicate the remaining battery capacity within one minute of accuracy on the large LCD monitor or the viewfinder.

■ RMT-811 Wireless Remote Commander

Start / Stop / Zoom of the camcorder and VTR operation, plus slow playback or search can be controlled by the supplied RMT-811 Wireless Remote Commander.



■ XLR Adaptor

The supplied XLR adaptor attaches onto the Intelligent accessory shoe of the camcorder, allowing external professional microphones to be connected. Through the XLR adaptor, phantom DC Power (+48 V) for a microphone is also supplied from the DSR-PD100.

■ Wide Angle Conversion Lens

A 0.7 x wide conversion lens is supplied, complete with lens hood and lens cap.

■ Long Battery Recording Time

Thanks to the lower power consumption, the DSR-PD100 can record up to approximately 7.5 hours, with the 3CCD camcorder. (40 min. / tape)

Continuous Recording Time	With LCD OFF	With LCD ON
NP-F330 (supplied)	70 min	55 min
NP-F950/B (option)	465 min	365 min

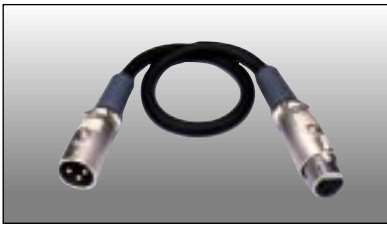
Optional Accessories



Electret Condenser
Microphone
ECM-670



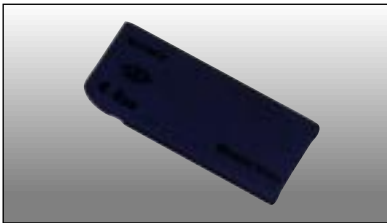
Microphone Holder
CAC-12



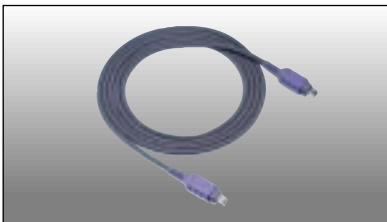
Microphone Cable
EC-0.3C2
EC-0.5C2



InfoLITHIUM Rechargeable
Battery Pack
NP-F950/B
NP-F730H
NP-F550



Memory Stick 4MB
MSA-4A
Memory Stick 8MB
MSA-8A



i.LINK Cable
VMC-IL4415
(1.5m, 4pin-4pin)
VMC-IL4435
(3.5m, 4pin-4pin)
VMC-IL4615
(1.5m, 4pin-6pin)
VMC-IL4635
(3.5m, 4pin-6pin)

Specifications

Lens:	12:1 variable speed (1.83-26.5 sec) zoom lens f = 4.3 to 51.6 mm; F1.6 to 2.8; Filter diameter 52 mm
Focus:	Auto/Manual (ring)/Infinity
Imaging Device:	Three 1/4-inch color CCDs, 380,000 pixels Progressive/Interlace Scan
White Balance:	Auto/One-push/Outdoor/Indoor
Shutter Speed:	1/4 to 1/10000 seconds
Exposure:	Auto/Manual (Exposure dial, Program AE)
Minimum Illumination:	4 lx
Horizontal Resolution:	500 TV lines
Viewfinder:	180,000 dot Color LCD, Zebra Pattern
Audio Signal:	Rec: 48 kHz/16-bit, 32 kHz/12-bit Playback: 48 kHz/16-bit, 32 kHz/12-bit 32 kHz/16-bit, 44.1 kHz/16-bit
Built-in Microphone:	Stereo electret condenser microphone
Built-in Speaker:	Dynamic speaker
LCD:	TFT Active Matrix, 3.5-inch 184,580 pixels (839 x 220)
Tape Speed:	Approx. 28.2 mm/s (DVCAM mode)
Maximum Recording Time:	40 minutes (with PDVM-40ME)
Video Signal:	EIA Standard, NTSC color system
Memory Card Slot:	PC Card Standard ATA specifications Type II Power Requirement: 3.3/5 V Capacity: 2 MB to 64MB* (* When formatted by DSR-PD100) Recording Signals: Camera signal, VTR signal Image Size: VGA (640 x 480) Image Compression: JPEG
Connectors:	Audio/Video IN/OUT*: Special AV Mini (converts to Phono) x 1 S-Video IN/OUT: Mini-DIN 4 pin x 1 MIC IN: Stereo Mini x 1 (XLR 3-pin x 1, via adaptor) i.LINK(DV IN/OUT): 4-pin x 1 LANC: Stereo mini-mini x 1 Headphone: Stereo mini x 1 External DC IN: 8.4 V (AC-L10 AC Adaptor)
Operating Temperature:	0 °C to 40 °C (32 °F to 104 °F)
Storage Temperature:	-20 °C to 60 °C (-4 °F to 140 °F)
Power Requirements:	DC 7.2 V (Battery), DC 8.4 V (AC Adaptor)
Power Consumption:	4.3 W using the viewfinder/5.3 W using the LCD
Dimensions:	93 x 112 x 193.5 mm (3 3/4 x 4 1/2 x 7 5/8 inches)
Mass:	Approx. 900 g / 1 lb 15 oz

* Picture quality by analog input is not satisfying for professional use.

Supplied Accessories

AC-L10 AC Adaptor, NP-F330 InfoLITHIUM rechargeable battery pack
RMT-811 Remote Commander and R6 batteries (2), XLR Adaptor
MSAC-PC1 Memory Stick/PC Card Adaptor, MSA-4A Memory Stick
MSAC-PR1 Parallel Port Adaptor, Special Stereo AV Cable
Wide Conversion Lens, Lens Hood, Lens Cap, Carrying Belt

Distributed by

©1999 Sony Corporation. All rights reserved.
Reproduction in whole or in part without written permission is prohibited.
Features and specifications are subject to change without notice.
All non-metric weights and measures are approximate.
Sony is a registered trademark of Sony Corporation.
DVCAM, i.LINK, Super SteadyShot, Handycam, InfoLITHIUM,
Memory Stick are trademarks of Sony Corporation.