

SECTION 10 OTHER VIDEO EQUIPMENT AND ACCESSORIES

1. Peripheral equipment	328
2. Batteries and chargers	333
3. AC Adaptor	338
4. System consoles	341
5. Connecting cables	342
6. Videocassette tape	
6-1 Batacam SP Videocassette Tapes	347
6-2 DVCAM Videocassette Tapes	348
6-3 S-VHS Videocassette Tapes	350
7. Memory stick™	351

1 Peripheral equipment

VCS-1000

Video Selector

- For use in combination with the SVRM-960 Bi-directional remote controller for high quality picture monitoring
- Minimizes the signal reflections caused by long cable runs
- Up to 20 SVO-965 units equipped with the SVBK-902 optional Bi-directional interface board can be connected to a single VCS-1000
- Loop-through output is provided for connection of up to 50 VCS-1000 units
- 19-inch EIA rack mountable in various directions
- On-Line indicator
- When the power is turned off, the LINE OUT becomes a loop-through output of the LINE IN for easy maintenance



Supplied accessories: Mounting brackets (EIA 2U width × 2, DIA 3U width × 2)
AC power cord
Operation manual

Specifications

General

Mass: Approx. 4 kg (8 lb 13 oz)
Dimensions: 424 (W) × 88 (H) × 132 (D) mm
(16³/₄ × 3¹/₂ × 5¹/₄ inches)
Power requirements: AC 120V, 50/ 60Hz
Power consumption: 8.5W max.
Maximum number of VTR connection: 20 units

Video

Video signal system: EIA monochrome, NTSC color
Frequency response: 6MHz, 100kHz reference
S/N ratio: More than 54dB

Audio

Frequency response: 20Hz to 20kHz, 1kHz -10dBu standard
S/N ratio: More than 85dB

RF video

Frequency response: 6MHz
S/N ratio: More than 54dB

Video inputs/outputs

Video in (from SVO-965):
BNC (×20), 1Vp-p, sync negative, 37.5Ω, unbalanced
Line in video (from previous VCS-1000):
BNC, 1Vp-p, sync negative, 75Ω, unbalanced
Line out video (to SVRM-960 or next VCS-1000):
BNC, 1Vp-p, sync negative, 75Ω, unbalanced

Control inputs/outputs

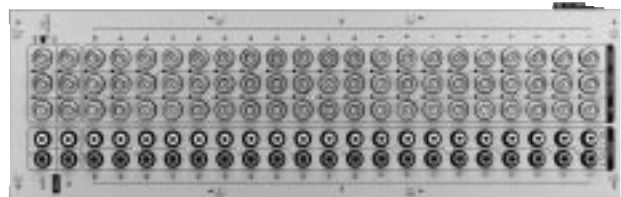
Control input (from SVO-965):
BNC (×20)
Rx*1 input: 1Vp-p, 37.5Ω, unbalanced
Tx*2 output: 1.4Vp-p, 37.5Ω, unbalanced
Line in control (from previous VCS-1000):
BNC
Tx input: 1Vp-p, 37.5Ω, unbalanced
Rx output: 1Vp-p, 37.5Ω, unbalanced
Line out control (to SVRM-960 or next VCS-1000):
BNC
Tx input: 1Vp-p, 37.5Ω, unbalanced
Rx output: 1Vp-p, 37.5Ω, unbalanced

RF

RF IN (from the SVO-965):
BNC (×20), 1Vp-p, 37.5Ω, unbalanced
Line IN RF (from previous VCS-1000):
BNC, 1Vp-p, 75Ω, unbalanced
Line Out RF (to SVRM-960 or next VCS-1000):
BNC, 1Vp-p, 75Ω, unbalanced

Audio inputs/outputs

Audio Input (from SVO-965): Phono (2-channel × 20), high impedance, unbalanced
Line In audio (from previous VCS-1000):
Phono (2-channel), high impedance, unbalanced
Line Out audio (to SVRM-960 or next VCS-1000):
Phono (2-channel), high impedance, unbalanced



*1: Rx: Signal output from the SVRM-960

*2: Tx: Signal output from the SVO-965

1 Peripheral equipment

◎VCS-63A

Video and Audio Selector

- A video and Audio (stereo) Signal can be selected from the six video and audio sources.
- Equipped with the loop-through out connectors for each input signal.
- When two or more selectors are connected in parallel, using the loop-through capability, a camera or VTR signal can be selected independently.
- Can be mounted into a 19-inch EIA standard rack using the supplied rack mount adaptor.

Dimensions:

Approx. 424(W) × 44(H) × 170(D)mm
(16³/₄ × 1³/₄ × 6³/₄ inches)

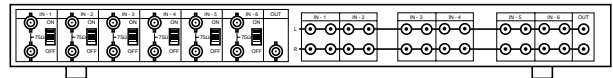
Mass: Approx. 3kg (6 lb 10 oz)

Connectors:

VIDEO IN/OUT—BNC type
AUDIO IN/OUT—PHONO

Supplied accessories:

Rack mount adaptor (×2)
Screw for rack mounting (×4)



SRP-12DAR

RGB Distribution Unit

- Provides AV applications including PC cost effective and high performance analog RGB distribution
- One analog RGB signal is distributed into two signals and monitor signal (total three)
- Monitor signal is routed through the D-sub 15p connector to monitor display
- Wide frequency response of up to 250 MHz (BNC output)
- Compact and durable enclosure is available

Inputs

Connector: BNC (x5)

RGB level: 0.7 Vp-p

RGB impedance:

75 Ω

Hs/Cs level: 1 V-4 Vp-p

Hs/Cs impedance:

47 kΩ

Hs/Cs sync: Positive/negative

Vs level: 1 V-4 Vp-p

Vs impedance:

47 kΩ

Outputs 1, 2

Connector: BNC (x5)

RGB level: 0.7 Vp-p

Hs/Cs level: 1 Vp-p/75 Ω, 4 Vp-p/high impedance

Vs level: 1 Vp-p/75 Ω, 4 Vp-p/high impedance

Monitor out

Connector: D-sub 15p

RGB level: 0.7 Vp-p

Hs/Cs level: 1 Vp-p /75 Ω, 4 Vp-p/high impedance

Vs level: 1 Vp-p/75 Ω, 4 Vp-p/high impedance

Electric characteristics

RGB bandwidth

Output 1, 2: 40 Hz to 250 MHz+3/-3 dB

Monitor out: 40 Hz to 200 MHz+3/-3 dB

Gain difference between RGBs:

0.2 dB

Delay between RGBs:

Less than 1 ns

General

Power requirements: Power plug converter for 120 V

Power consumption: 4 W



SRP-200DA

AV Distribution Amplifier

- Can distribute an AV input signal in five ways
- The 75Ω terminator of the video input is automatically disconnected when a cable is connected to the stacking terminal. Up to four units can be connected in parallel
- Can be mounted into a 19-inch EIA standard rack

General

Dimensions: 482(W) × 44(H) × 175(D)mm
(19 × 1³/₄ × 7 inches)

Mass: 2.5kg (5 lb 8 oz)

Power requirements:

AC 120V, 230V, 50Hz/60Hz

Power consumption:

5W

Operating temperature:

0 to 40°C (32 to 104°F)

Storage temperature:

-20 to +60°C (-4 to +140°F)

Video

Frequency response:

100 kHz to 10 MHz, -0.5dB

DG: Less than 0.5%

DP: Less than 0.4°

Input: 75Ω/high impedance

(high impedance at stacking output)

BNC connector ×1

Outputs: 75Ω, BNC connector ×5

(high impedance at stacking output)

Audio

Frequency response:

20Hz to 20kHz

Harmonic distortion:

Less than 0.005%

Inputs (one stereo)

Reference level:

-10dBu

Max. level: +10dBu

Impedance: 47kΩ

Type: Phono jack (stereo x5)

Circuit: Unbalanced

Outputs (five stereo)

Reference level:

-10dBu

Max. level: +10dBu

Impedance: 47Ω

Type: Phono jack

Circuit: Unbalanced



1 Peripheral equipment

VCS-500

Video and audio switcher with blanking switch facility

- The system using the VCS-500 can operate synchronically with the external sync or the video signal connected to the VIDEO IN-1 connector. The signal can be switched in the blanking portion so that switching noise is eliminated
- Up to five video and audio signals can be controlled
- Remote control is possible when an RM-V5 VTR selector is used
- DUB circuit switching function
- Can be mounted into 19-inch EIA standard rack

Inputs: Video—1Vp-p of rating, 75Ω, unbalanced, sync negative
Sync—3V ±1Vp-p, 75Ω, unbalanced, negative
Audio—LINE IN CH-1/CH-2, -5dB of rating, 47kΩ

Outputs: Video—Rated input ±0.2Vp-p, 75Ω, unbalanced, sync negative
Sync—3V ±1Vp-p, 75Ω,

unbalanced, negative
Audio—LINE OUT CH-1/CH-2, rated input ±2dB, 47kΩ

Frequency response:

Video ±1dB (up to 6MHz)
Audio 50 to 15,000Hz ±1dB

Connectors:

VIDEO IN/OUT—BNC
SYNC IN/OUT—BNC
AUDIO IN/OUT—Phono
REMOTE IN/OUT—20-pin
DUB IN/OUT—7-pin

Power requirements:

AC 100/110/120/127/220/240V
±10% (selectable), 50/60Hz

Power consumption:

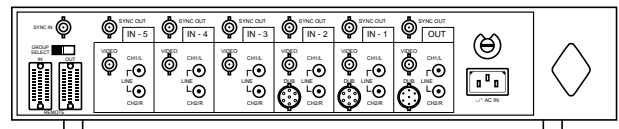
20W

Dimensions: 480 (W) × 87 (H) × 280 (D) mm
(19 × 3 1/2 × 11 1/8 inches)

Mass: 7 kg (15 lb 7 oz)

Supplied accessories:

AC power cord
Screw for rack mounting



DA-1400

Video/audio distributor

- Two video/audio inputs and fourteen distribution outputs
- Four distribution patterns are available: Input signal A (1 to 14 ch), Input signal B (1 to 14 ch), Input signal A (1 to 7 ch)/Input signal B (8 to 14 ch), Input signal B (1 to 7 ch)/Input signal A (8 to 14 ch)
- Loop-through output connector for each input signal to expand the connection with other DA-1400s
- Video/audio level meters for adjusting and confirming the output signal levels
- Audio input level selector (-10dB/-6dB)
- 19-inch EIA standard rack mountable

Supplied accessories: AC power cord
Mounting brackets (EIA 2U width: 1 pair)
Operation manual

General

Mass: 6 kg (13 lb 23 oz)
Dimensions: 424 (W) × 88 (H) × 350 (D) mm
(16 3/4 × 3 1/2 × 13 7/8 inches)

Power requirements:

AC 120V, 50/60Hz

Power consumption:

16W

Video

Inputs: Loop-through, BNC (×2), 1Vp-p, 75Ω, sync negative

Outputs: BNC (×14), 1Vp-p, 75Ω, sync negative

S/N ratio: Better than 60dB

Frequency response:

10MHz ± 1dB

Audio

Inputs: Loop-through, Phono (2-channel) (×2)
Input level: -10dBu/-6dBu switchable, 50kΩ

Outputs: Phono (2-channel) (×14)
Output level: -10dBu/-6dBu, 100Ω

S/N ratio: Better than 70dB at 600Ω

Frequency response:

20Hz to 20kHz ±1dB

Distortion: Less than 0.1%, -10dBu at 1kHz



DA-500

Color and monochrome video/audio distributor with DUB connectors

- Five Video/DUB/Audio outputs and one direct output
- DUB connectors are furnished so that a high quality video signal will be obtained
- Up to four DA-500s can be connected in series so that the input signal can be divided into as many as 20 separate signals
- Can be mounted into 19-inch EIA standard rack

Inputs: Video—1Vp-p of rating, 75Ω, unbalanced, sync negative
Audio—LINE CH-1/CH-2, -5dB of rating, 47kΩ, unbalanced

Outputs: Video—OUT 1 to 5, Rated input ±0.2Vp-p, 75Ω, unbalanced, sync negative
Audio—LINE CH-1/CH-2, Rated input ±2dB, 47kΩ

Connectors: VIDEO IN/OUT, DIRECT OUT—BNC
AUDIO IN/OUT, DIRECT OUT—Phono

Power requirements:

AC 100/110/120/127/220/240V
±10% (selectable), 50/60Hz

Power consumption:

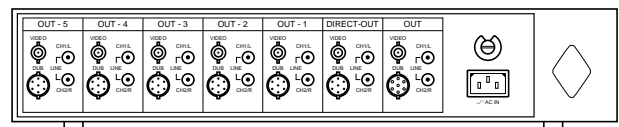
20W

Dimensions: 480 (W) × 87 (H) × 280 (D) mm
(19 × 3 1/2 × 11 1/8 inches)

Mass: 6.1 kg (13 lb 7 oz)

Supplied accessories:

AC power cord
Screw for rack mounting



1 Peripheral equipment

VA-200E

Cable compensator for stable color/monochrome video transmission

- Compensates for the attenuation caused by long-distance transmission of color/monochrome video signals with a coaxial cable
- Especially effective for the transmission of color video signals

Length adjustments

	3C-2V	5C-2V	7C-2V	10C-2V
1	180m	300m	370m	500m
2	360m	600m	750m	1000m
3	540m	900m	1100m	1500m
4	720m	1200m	1500m	2000m

Video input: 1.0Vp-p to 1.4Vp-p 75Ω, unbalanced
 Video output: 1Vp-p, 75Ω, unbalanced
 Frequency response: Flat to 4.5MHz ±2dB
 Operating temperature: 0 to 40°C (32 to 104°F)
 Connectors: VIDEO IN/OUT—UHF (M-type)
 Power requirements: AC 110 to 130/220 to 240V selectable, 50/60Hz
 Power consumption: 6W
 Dimensions: 214 (W) × 75 (H) × 171 (D) mm (8½ × 3 × 6¾ inches)
 Mass: 1.4 kg (3 lb 4 oz)
 Supplied accessory: AC power cord



PVS-1680S

Matrix Switcher

- Sixteen inputs and eight outputs matrix functions
- RS-232C interface port for remote control from a PC
- Reference video input and roop-through output
- Memory function up to 50-scene
- Equipped with a LOCK SWITCH to prevent inadvertent operation
- 4U high, mountable in 19-inch standard rack

Supplied accessory: Power cable (1)

Audio

Input and output connector: Phono
 Number of input ch: 16 (stereo)
 Impedance: 47 kΩ
 Reference(Max.) input level: -10 dBu (+16 dBu)
 Input impedance: 47 kΩ
 Number of output ch: 8 (stereo)
 Impedance: 470 Ω
 Reference(Max.) output level: -10 dBu (+16 dBu)
 Output impedance: 470 Ω
 Load impedance: More than 10 kΩ
 Frequency response: 20 Hz to 20 kHz, +0.1 dB/ -0.5 dB

T.H.D.: Less than 0.005%

Video (Composite)

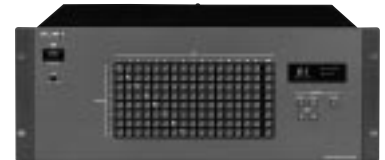
Input and output connector: BNC
 Number of input ch: 16
 Number of output ch: 8
 Input and output impedance: 75 Ω
 Frequency response: 60 Hz to 10 MHz +0.8 dB/-1 dB
 DG: Less than 0.5%
 DP: Less than 0.5%

S-Video

Input and output connector: 4-pin mini DIN
 Number of input and output: 4*
 *Interlocked with channels to 1 to 4 of composite input
 Input and output impedance: 75 Ω
 Frequency response: 60 Hz to 10 MHz

General

Power requirements: AC 230 V, 50/60 Hz
 Power consumption: 25 W
 Operating temperature: 0 to 40°C (32 to 10°F)
 Storage temperature: -20 to 60°C (-4 to 140°F)
 Mass: 13 kg(22 lb 1 oz)
 Dimensions: 482 (W) × 176 (H) × 350 (D) mm (19 × 7 × 13⅞ inches)



PVS-1240S

Matrix Switcher

- Twelve inputs and four outputs matrix functions
- RS-232C interface port for remote control from a PC
- Reference video input and loop-through output
- Memory function up to 50-scene
- Equipped with a LOCK SWITCH to prevent inadvertent operation
- 4U high, mountable in 19-inch standard rack

Supplied accessories: Power cable (1), Plug adaptor (1)

Audio

Inputs and output connector: Phono
 Number of input ch: 12 (stereo)
 Impedance: 47 kΩ
 Reference(Max.) input level: -10 dBu (+16 dBu)
 Input impedance: 47 kΩ
 Number of output ch: 4 (stereo)
 Impedance: 470 Ω
 Reference(Max.) output level: -10 dBu (+16 dBu)

Output impedance: 470 Ω
 Load impedance: More than 10 kΩ
 Frequency response: 20 Hz to 20 kHz, +0 dB/ -0.5 dB
 T.H.D.: Less than 0.002%

Video (Composite)

Inputs and output connector: BNC
 Number of input ch: 12
 Number of output ch: 4
 Input and output impedance: 75 Ω
 Frequency response: 60 Hz to 10 MHz, +0.8 dB / -0.5 dB
 DG: Less than 0.5%
 DP: Less than 0.5%

S-Video

Input and output connector: 4-pin mini DIN
 Number of input and output ch : 4*
 *Interlocked with ch1 to 4 of composite input
 Input and output impedance: 75 Ω
 Frequency response: 60 Hz to 10 MHz

General

Power requirements: AC 120/230 V, 50/60 Hz
 Power consumption: 18 W

Operating temperature: 0 to 40°C (32 to 10°F)
 Storage temperature: -20 to 60°C (-4 to 140°F)
 Mass: 10 kg (22 lb 1 oz)
 Dimensions: 482 (W) × 176 (H) × 350 (D)mm (19 × 14 × 13 ⅞ inches)



1 Peripheral equipment

PVS-880S

Matrix Switcher

- Eight inputs and eight outputs matrix functions
- RS-232C interface port for remote control from a personal computer
- Reference video input
- Memory function
- Equipped with a LOCK SWITCH to prevent inadvertent operation
- Can be mounted in a 19-inch EIA standard rack

Supplied accessory: Power cable (1)

Audio

Input and output connector:

Phono

Number of input ch: 8 (stereo)

Impedance: 47 Ω

Reference (max.) input level:

-10 dBu (+16 dBu)

Input impedance: 47 Ω

Number of output ch : 8 (stereo)

Impedance: 470 Ω

Reference (max.) output level:

-10 dBu (+16 dBu)

Output impedance: 470 Ω

Load impedance: More than 10 kΩ

Frequency response: 20 Hz to 20 kHz
+0.1/-0.5dB

T.H.D.: Less than 0.005%

Video (Composite)

Input and output connector:

BNC

Number of input ch: 8

Number of output ch: 8

Input and output impedance:

75 Ω

Frequency response: 60 Hz to 10 MHz

+0.8 dB/-0.5dB

DG: Less than 0.5%

DP: Less than 0.5°

S-Video

Input and output connector:

4-pin mini-DIN

Number of input and output ch:

4*

*Interlocked with ch 1 to 4 of composite input

Input and output impedance:

75 Ω

Frequency response: 60 Hz to 10 MHz

±0.5 dB

General

Power requirements: AC 120–230V, 50/60Hz

Power consumption: 17W

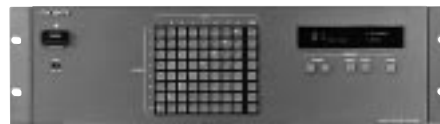
Operating temperature: 0 to 40°C (32 to 104°F)

Storage temperature: -20 to 60°C (-4 to 140°F)

Mass: 10kg (22 lb 1 oz)

Dimensions: 482(W) × 132(H) × 350(D)mm

(19 × 5 1/4 × 13 7/8 inches)



*Except for North America

PVS-820S

Matrix Switcher

- Eight inputs and two outputs matrix functions
- Reference video input
- Equipped with a LOCK SWITCH to prevent inadvertent operation
- Can be mounted in a 19-inch EIA standard rack

Supplied accessory: Power cable (1)

Audio

Input and output connector:

Phono

Number of input ch: 8 (stereo)

Impedance: 75 Ω

Reference (max.) input level:

-10 dBu (+10 dBu)

Input impedance: 47 Ω

Number of output ch: 2 (stereo)

Impedance: 470 Ω

Reference (max.) output level:

-10 dBu (+10 dBu)

Output impedance: 470 Ω

Load impedance: More than 10 kΩ

Frequency response: 20 Hz to 20 kHz

+0.1/-0.5dB

T.H.D.: Less than 0.005%

Video (Composite)

Input and output connector:

BNC

Number of input ch: 8

Number of output ch: 2

Input and output impedance:

75 Ω

Frequency response: 60 Hz to 10 MHz

+0.3 dB/-1dB

DG: Less than 0.5%

DP: Less than 0.5°

S-Video

Input and output connector:

4-pin mini-DIN

Number of input ch: 4*

Number of output ch: 2

*Interlocked with ch 1 to 4 of composite input

Input and output impedance:

75 Ω

Frequency response: 60 Hz to 10 MHz

+0.3/-1dB

General

Power requirements: AC 120V–230V, 50/60Hz

Power consumption: 17W

Operating temperature: 0 to 40°C (32 to 10°F)

Storage temperature: -20 to 60°C (-4 to 140°F)

Mass: 4kg (8 lb 13 oz)

Dimensions: 482(W) × 88(H) × 220(D)mm

(19 × 3 1/2 × 8 3/4 inches)



*Except for North America

2 Batteries and chargers

BC-1WD

Battery charger for NP-1B

- Battery charger for the NP-1B battery pack
- Up to four NP-1B batteries can be charged
- Auto refresh function
- Battery life indication
- Skips charging process for fully charged batteries

Power requirements:

AC 120 V \pm 10%, 50/60 Hz

Power consumption:

51 W

Charging time: Approx. 90min

Dimensions: 107.5 (W) \times 88 (H) \times 325 (D)

mm

(4 $\frac{1}{4}$ \times 3 $\frac{1}{2}$ \times 12 $\frac{7}{8}$ inches)

Mass: Approx. 1.7 kg (3 lb 5 oz)



BC-410

Battery charger for BP-90A/NP-1B

- Battery charger for BP-90A and NP-1B
- Up to four BP-90As and four NP-1Bs can be charged
- Battery refreshing function
- Trickle charge to avoid self-discharge

Power requirements:

AC 100/120V selectable, 50/60Hz

Power consumption:

75W

Charging time:

BP-90A: 160 min

NP-1B: 90 min

Dimensions:

212 (W) \times 85 (H) \times 325 (D) mm

(4 $\frac{1}{2}$ \times 3 $\frac{3}{8}$ \times 12 $\frac{7}{8}$ inches)

Mass: 4 kg (8 lb 13 oz)

Supplied accessories:

AC power cord

Operation/maintenance manual



BC-L50

Lithium-ion Battery Charger

- Compact and mobile battery charger which can be used with Lithium-ion battery packs
- Up to two Lithium-ion batteries attached
- Use a unique new time-saving charging system for quick charges

Power requirements:

AC 120 V, 60 Hz

Output: DC 16.8 V, 2.2 A

Power consumption:

Approx. 49 W

Operating temperature:

-5° C to 45° C (23° F to 113° F)

Storage temperature:

-20° C to 60° C (-4° F to 140° F)

Operating/storage humidity:

5 to 90 % RH

Mass: 1.1 kg (2 lb 6 oz)

Dimensions (w/h/d):

60 \times 191 \times 130 mm

(2 $\frac{3}{8}$ \times 7 $\frac{5}{8}$ \times 5 $\frac{1}{8}$ inches)

(w/o projections)

Charge system:

Constant voltage and current charge system with timer stop system

Charge control system:

Constant voltage and current charge control system

Booster charge current:

Approx. 2.2 A



BC-L100

Battery charger for BP-L60A

BP-L90A/NP-1B/BP-90A

- Battery charger for BP-L60A/BP-L90A/NP-1B/BP-90A batteries
- Up to four BP-L60A, BP-L90A, NP-1B or BP-90A can be charged

Power requirements:

AC100V to 240V, 60Hz

Power consumption:

110W

Charging time:

BP-L60A: Approx. 2.5 hours

BP-L90A: Approx. 3.5 hours

NP-1B: Approx. 70 min

Dimensions: 330 (W) \times 131 (H) \times 144 (D) mm

(13 \times 5 $\frac{1}{4}$ \times 5 $\frac{3}{4}$ inches)

Mass: Approx. 2 kg (4 lb 7 oz)



2 Batteries and chargers

BC-V500

Battery charger

- Compact battery charger for the NP-F530/F730/F930, etc.
- Two batteries can be charged at the same time

Dimensions: 45(W) × 98(H) × 50(D) mm

Mass: Approx. 120 g

Power requirements:

AC100 to 240V, 50/60Hz

Output: DC 8.4V/0.6A



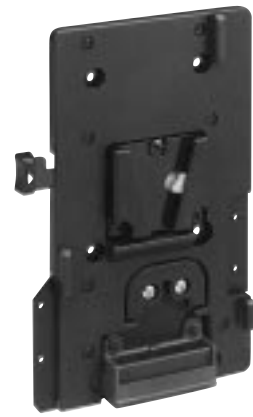
BKW-L601

Battery adaptor for between DSR-1, PVV-3 and BP-L60A/BP-L90A

- Can be attached to the optional battery case of the DSR-1 DVCAM recorder and the PVV-3 Betacam SP 2000 PRO recorder
- Allows the DSR-1 and the PVV-3 to be operated with BP-L60A and BP-L90A

Dimensions: 89 (W) × 141.4 (H) × 14.2 (D) mm
(3⁵/₈ × 5⁵/₈ × 9/₁₆ inches)

Mass: 110 g (4 oz)



DC-520

Battery adaptor for NP-1B

- Can be attached to the supplied battery case of the DSR-1, PVV-3 Betacam SP 2000PRO recorder UVW-100B
- Allows the DSR-1, PVV-3 and UVW-100B to be operated with two NP-1B batteries
- Supplies DC 12V to the DSR-1, PVV-3 and UVW-100B

Dimensions: 100 (W) × 195 (H) × 44 (D) mm
(4 × 7³/₄ × 1³/₄ inches)

Mass: 230 g (8 oz)

Supplied accessories:

Screws (M3 × 6)



DC-500 (Mount type)

Battery case for BP-90A

- Battery case for one BP-90A battery
- Designed for the DSR-1, PVV-3 and UVW-100B
- Supplies DC 12V

Dimensions: 147 (W) × 207 (H) × 62 (D) mm
(5⁷/₈ × 8¹/₄ × 2¹/₂ inches)

Mass: 400 g (14 oz)

Supplied accessories:

Screws (M3 × 5)



2 Batteries and chargers

DC-210 (waist belt type)

Battery case for BP-90A

- Battery case for one BP-90A battery pack
- Supplies DC 12V to Sony video equipment

Dimensions: 145 (W) × 180 (H) × 85 (D) mm
(5³/₄ × 7¹/₈ × 3³/₈ inches)

Mass: 500 g (1 lb 2 oz)

Supplied accessories:

- Power cord (1.2m) (×1)
- Belt



DC-L1

Battery Case for NP-1B

- Battery Case for a NP-1B battery to be used with the camcorders/portable editors which incorporates the V-shoe attachment
- Quick and easy battery change

Specifications

Dimensions: 101(W) × 196.2(H) × 54.8(D) mm
(4 × 7³/₄ × 2¹/₄ inches)

Mass: 300g (11 oz)



DC-L90

Battery Case for BP-90A

- Battery Case for a BP-90A battery to be used with the camcorders/portable editors which incorporates the V-shoe attachment
- Quick and easy battery change

Specifications

Dimensions: 138(W) × 203.6(H) × 76.6(D) mm
(5¹/₂ × 8¹/₈ × 3¹/₈ inches)

Mass: 620g (1 lb 6 oz)



BP-L40

Lithium-ion Battery

- Compact Lithium-ion battery for professional Sony camcorders, which is designed to match the body height of the DSR-300

Battery type:

Lithium-ion battery

Maximum voltage:

16.8 V DC

Nominal voltage:

14.4 V DC

Capacity: 38.9 Wh

Dimensions (w/h/d):

92 × 138 × 37 mm

(3⁵/₈ × 5¹/₂ × 1¹/₂ inches)

Mass:

Approx. 520 g (1 lb 1 oz)



2 Batteries and chargers

BP-L60A

Rechargeable Lithium Ion Battery Pack

•High capacity lithium-ion battery •No "Memory Effect" •Built-in LED capacity indicator for a quick visual check of the remaining charge •V-shoe attachment for quick and easy battery change

Specifications

Type of battery: Lithium-ion rechargeable
Maximum voltage: 16.8V
Nominal voltage: 14.4V
Current capacity: 60Wh
Cell capacity: 5.4Ah
Operating temperature:
-20°C to +45°C (-4°F to +113°F)
Dimensions: 101(W) × 168.7(H) × 37(D) mm
(4 × 6³/₄ × 1¹/₂ inches)
Mass: 900g (1 lb 16 oz)



BP-L90A

Rechargeable Lithium Ion Battery Pack

•High capacity lithium-ion battery •No "Memory Effect" •Built-in LED capacity indicator for a quick visual check of the remaining charge •V-shoe attachment for quick and easy battery change

Specifications

Type of battery: Lithium-ion rechargeable
Maximum voltage: 16.8V
Nominal voltage: 14.4V
Current capacity: 90Wh
Cell capacity: 8.1Ah
Operating temperature:
-20°C to +45°C (-4°F to +113°F)
Dimensions: 101(W) × 168.7(H) × 60(D) mm
(4 × 6³/₄ × 2³/₄ inches)
Mass: 1300g (2 lb 14 oz)



BP-90A

Rechargeable battery pack

•Supplies DC 12V to DSR-1, PVV-3, UVW-100B, PVM-8045Q/8042Q/5041Q, TU-1040E

Type of battery: NiCd rechargeable
Voltage: DC 12V
Current capacity: 5Ah
Dimensions: 123 (W) × 171 (H) × 37 (D) mm
(4⁷/₈ × 6³/₄ × 1¹/₂ inches)
Mass: 1.6 kg (31 lb 8 oz)



NP-1B

Rechargeable battery pack

•Supplies DC 12V to DSR-1, PVV-3, UVW-100B, VO-8800, DXC-D30/D30WS/327B, PVM-8045Q/8042Q/5041Q, TU-1040E, EVM-9010PR/1410PR

Battery used: NiCd battery
Output voltage: DC 12V
Capacity: 2.3 Ah
Dimensions: Approx.
72 (W) × 25 (H) × 185 (D) mm
(2⁷/₈ × 1 × 7³/₈ inches)
Mass: Approx. 600 g (1 lb 5 oz)



2 Batteries and chargers

NP-F220/B InfoLITHIUM Rechargeable Battery Pack

Maximum voltage: 8.4 V DC
Capacity: 1400mAh
Dimensions (w/h/d): 82 × 20 × 54 mm
(3 1/4 × 13/16 × 2 1/4 inches)
Mass: Approx. 100 g (3 oz)



NP-F950 InfoLITHIUM Rechargeable Battery Pack

Maximum voltage: 7.2 V DC
Capacity: 4050mAh
Dimensions: 38.4(W) × 59.7(H) × 70.8(D) mm
Mass: Approx. 280 g



NPA-10000/B Three-battery Holder

*Can hold three NP-F950 InfoLITHIUM
Rechargeable Battery Pack

Power requirements: 7.2 VDC
Dimensions (w/h/d): 95 × 132 × 81mm
(3 3/4 × 5 1/4 × 3 1/4 inches)
Mass: Approx. 220 g



NP-F550 (F530) InfoLITHIUM Rechargeable Battery Pack

•Can be used for the DKC-CM30

Voltage: 7.2V
Capacity: 1500 mAh (1350 mAh)
Dimensions (W × H × D): 38.4 × 20.6 × 70.8 mm
(1 9/16 × 13/16 × 2 7/8 inches)
Mass: Approx. 95 g (110 g)



3 AC adaptor

AC-550

AC Adaptor

•Supplies DC power to the one-piece camcorder and a portable VTR through the 26-pin (CCZ-type) camera connector or the XLR 4-pin DC OUT connector

Supplied accessories:

AC power cord
DC power cord
Operation and
Maintenance manual

Power requirements:

AC 110 to 120V/220 to
240V \pm 10%
selectable, 60Hz

Power consumption: Max 130W

DC output: 13.5V, 7A

Input/Output connectors:

CAMERA: CCZ-type 26-pin

VIDEO OUT: BNC type

MIC OUT: Equivalent to

XLR-3-31

DC OUT: Equivalent to

XLR-4-31

EXT VBS: BNC type

Dimensions: 217 (W) \times 91 (H) \times 327 (D) mm
(8⁵/₈ \times 3⁵/₈ \times 12⁷/₈ inches)

Mass: 3.8 kg (8 lb 6 oz)



CMA-8A

AC Adaptor

•Supplies AC power to the one-piece camcorder and portable VTR through the 14-pin (CCQ-BRS) camera connector

Power requirements :

AC 110 to 127V or 220 to 240V
selectable, 50/60Hz

Power consumption :

95W

Dimensions: 105(W) \times 105 (H) \times 308 (D) mm

(4 1/4 \times 4 1/4 \times 12 1/4 inches)

Mass: Approx. 2.8 kg (6 lb 2.8 oz)



AC-DN1

AC Adaptor

Power requirements:

AC 100V to 240V

Power consumption:

50W (90VA) or less

Power output (DC):

38W

Voltage output (DC):

16.7V

Mass:

660g

Dimensions: 112(W) \times 169(H) \times 38(D)mm

Charging time:

BP-L60A 4hr. (to about 85% capacity)

BP-L90A 6hr. (to about 85% capacity)

Supplied accessories:

DC power cord (1)

BKW-L601/1 (1)



AC-DN2A

AC Adaptor

Power requirements: AC 100V to 240V

Power consumption: 180W

Power output (DC): 150W

Voltage output (DC): 16.7V

Mass: 1kg

Dimensions: 112(W) \times 169(H) \times 70(D)mm

Charging time: BP-L60A 4hr. (to about 85%
capacity)

BP-L90A 6hr. (to about 85%
capacity)

Supplied accessories:

DC power cord (1)



3 AC adaptor

AC-V100/B

AC adaptor/battery charger

*Battery charger for InfoLITHIUM battery such as NP-F220/B and AC adaptor

Power requirement:

AC 100V to 240V, 50/60Hz

Power consumption:

25 W

Dimensions (w/h/d):

57 × 44 × 107 mm
(2 ¼ × 1 ¾ × 4 ¼ inches)

Mass:

Approx. 190 g (6 oz)



AC-V900/B

Three-battery charger/AC adaptor

*Battery charger which can hold three-battery such as NP-F950/B and AC adaptor

Power requirement:

AC 100V to 240V, 50/60Hz

Power consumption:

70W

Dimensions (w/h/d):

169(W) × 58(H) × 153(D) mm

Mass:

Approx. 650 g



AC-VQ800

AC Adaptor/Charger

•AC adaptor for Lithium-ion type camcorder
•Battery charger for Lithium-ion batteries:
InfoLITHIUM L series (NP-F550/750/950) and
InfoLITHIUM M series(consumer)

Specifications:

Power requirement:

AC 100 V to 240 V, 50 Hz/60 Hz

VTR mode: DC 8.4 V/2.0 A

Charge mode: DC 8.4 V/1.4 A

Dimensions: 136.0(W) × 51.5(H) × 89.7(D) mm
(5 ⅜ × 2 ⅛ × 3 ⅝ inches)

Mass: Approx. 250 g (0.6 lb)

Supplied accessories:

Connection cable DK-415 (DC plate type)

DK-215 (DC IN type)

AC power cord (mains lead)



DC-VQ800

DC Adaptor/Charger

•Car battery adaptor for Lithium-ion type camcorder
•Battery charger for Lithium-ion batteries:
InfoLITHIUM L series (NP-F550/750/950) and
InfoLITHIUM M series(consumer)

Specifications

Power requirement:

DC 12 V/24 V

VTR mode: DC 8.4 V/2.0 A

Charge mode: DC 8.4 V/1.4 A

Dimensions: 136.0(W) × 51.5(H) × 89.7(D) mm
(5 ⅜ × 2 ⅛ × 3 ⅝ inches)

Mass: Approx. 300 g (0.7 lb)

Supplied accessories:

Connection cable DK-415 (DC plate type)

DK-215 (DC IN type)



3 AC adaptor

AC-V700

AC Adaptor/Charger

- AC adaptor for Lithium-ion type camcorder
- Battery charger for Lithium-ion batteries: InfoLITHIUM L series (NP-F550/750/950) and NP-F100/200/220

Specifications:

Power requirement:

AC 100 V to 240 V, 50 Hz/60 Hz

VTR mode: DC 8.4 V/2.0 A

Charge mode: DC 8.4 V/1.4 A

Dimensions: 127.0(W) × 54.8(H) × 95.0(D) mm
(5 × 2 1/4 × 3 3/4 inches)

Mass: Approx. 265 g (0.6 lb)

Supplied accessories:

- Connectign cable DK-415 (DC plate type)
- AC power cord (mains lead)



DC-V700

DC Adaptor/Charger

- Car battery adaptor for Lithium-ion type camcorder
- Battery charger for Lithium-ion batteries: InfoLITHIUM L series (NP-F550/750/950) and NP-F100/200/220

Specifications

Power requirement:

DC 12 V/24 V

VTR mode: DC 8.4 V/2.0 A

Charge mode: DC 8.4 V/1.4 A

Dimensions: 127.0(W) × 54.8(H) × 95.0(D) mm
(5 × 2 1/4 × 3 3/4 inches)

Mass: Approx. 265 g (0.6 lb)

Supplied accessory:

- Connectign cable DK-415 (DC plate type)



4 System consoles

Basic Consoles

System consoles

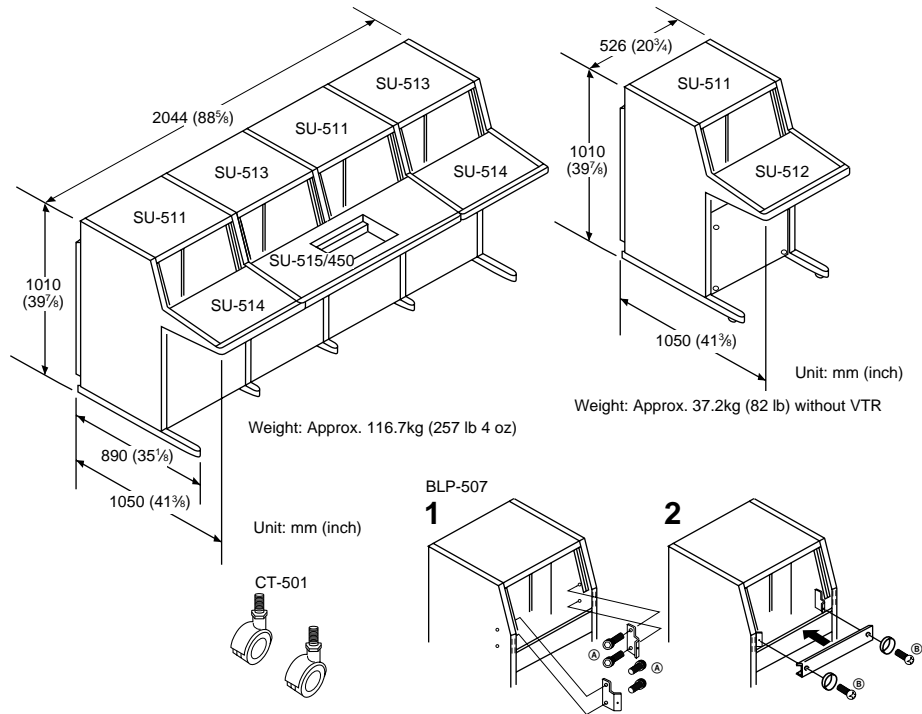
- SU-450 Double size table for RM-450/
DME-450
- SU-511 Unit rack
- SU-512 Unit table
- SU-513 Extension rack
- SU-514 Extension table
- SU-515 Double size table for RM-440

Rack mount metals

- RMM-450 For RM-450/DME-450
mounting
- RMM-501 For VO-9850/9800 Type-5/9
series VTR mounting
- RMM-502 For RM-500 or RM-V5
mounting
- RMM-503 For RM-580 mounting
- RMM-505 For RM-500 (× 2), RM-V5 (× 2)
or RM-500/RM-V5
mounting
- RMM-506 For Betamax or audio
equipment mounting
- RMM-507 For Type-7/9 series VTR
mounting (except
VO-9850/9800)
- RMM-980 For EVO-9800/9850 mounting

Blank panels

- BLP-501 1U Blank panel
- BLP-502 2U Blank panel
- BLP-503 3U Blank panel
- BLP-504 1U Pad panel
- BLP-505 2U Pad panel
- BLP-506 6U Modification panel
- BLP-507 Blank panel



OTHER VIDEO
EQUIPMENT AND
ACCESSORIES

5 Connecting cables

CCA-7 cables (10-pin/10-pin)

CCA-7-5 : 5m (16.5 ft)
 CCA-7-25 : 25m (82 ft)
 CCA-7-50 : 50m (165 ft)
 CCA-7-100 : 100m (330 ft)

- 10-pin (male) ↔ 10-pin (female)
- RM-M7G ↔ DXC-D30/300/327B series
- RM-M7G ↔ CCU-M7/M5
- RM-M7G ↔ CA-325A/325B



CCDC cables (12-pin/4-pin)

CCDC-5 : 5m (16.4 ft)
 CCDC-10 : 10m (33 ft)
 CCDC-25 : 25m (82 ft)

- 12-pin (female) ↔ 4-pin (male)
- DXC-LS1/107A/950/9000/390 ↔ CMA-D2



CCDC-A cables (12-pin/4-pin)

CCDC-50A : 50m (164 ft)
 CCDC-100A : 100m (330 ft)

- 12-pin (female) ↔ 4-pin (male)
- DXC-LS1/107A/950/9000/390 ↔ CMA-D2



CCDD-2.5 (4-pin/4-pin)

•4-pin (male) ↔ 4-pin (female), 2.5 m (8.2 ft)
 •SEG-2000A series ↔ CRK-2000



CCDQ-06 (14-pin/4-pin)

•14-pin (male) ↔ 4-pin (male), 0.6 m (2 ft)



CCF cables (6-pin/6-pin)

CCF-1 : 1m (3.3 ft)
 CCF-5 : 5m (16.4 ft)
 CCF-10 : 10m (33 ft)
 CCF-25 : 25m (82 ft)
 CCF-50 : 50m (164 ft)

- 6-pin (male) ↔ 6-pin (female)
- SEG-2000A/2550A ↔ WEX-2000



CCMC cables (12-pin/12-pin)

CCMC-12P02 : 2m (6.4 ft)
 CCMC-12P05 : 5m (16.4 ft)
 CCMC-12P10 : 10m (33 ft)
 CCMC-12P25 : 25m (82 ft)

- 12-pin (male) ↔ 12-pin (female)
- DXC-LS1/107A/950/9000/390 ↔ CMA-D2



CCMC-16P03/10 (16-pin/20-pin)

CCMC-16P03 : 3m (10 ft)
 CCMC-16P10 : 10m (33 ft)

- 16-pin (female) ↔ 20-pin (female), 10m (33 ft)
- DXC-LS1 Camera Head ↔ DXC-LS1 Camera Control Unit



CCMC-9DS (9-pin/4BNCs, DIN 4-pin)

•9-pin D-sub (male) ↔ BNCs (R/G/B/SYNC, male), DIN 4-pin (Y/C, male)
 •5m (16.4 ft)
 •For video output from DXC-950/9000/390



5 Connecting cables

CCTQ-3RGB (20-pin/14-pin)

- DXC-950/9000 ↔ CCU-M5, 3m (10 ft)
- It is possible to extend the cable length with CCQ-AM cable
- CCQQ-1 interconnection adaptor is supplied
- RGB/VBS output to CCU-M5



CCTZ-3RGB (20-pin/26-pin)

- DXC-950/9000 ↔ CCU-M5, 3m (10 ft)
- CCZZ-1E interconnection adaptor is supplied
- It is possible to extend the cable length with CCZ-AM cable
- RGB/VBS output to CCU-M5



CCTZ-3YC (20-pin/26-pin)

- DXC-950/9000 ↔ CCU-M5, 3m (10 ft)
- CCZZ-1E interconnection adaptor is supplied
- It is possible to extend the cable length with CCZ-AM cable
- YC/VBS output to CCU-M5



CCQ-AM cables (14-pin/14-pin)

- CCQ-10AM** : 10m (33 ft)
- CCQ-25AM** : 25m (82.5 ft)
- CCQ-50AM** : 50m (165 ft)
- CCQ-100AM** : 100m (330 ft)

- 14-pin (male) ↔ 14-pin (female)
- CA-327 ↔ CCU-M5



CCQ-BRS cables (14-pin/14-pin)

- CCQ-2BRS** : 2m (6.4 ft)
- CCQ-5BRS** : 5m (16.4 ft)
- CCQ-10BRS** : 10m (33 ft)
- CCQ-25BRS** : 25m (82.5 ft) only for projector
- CCQ-50BRS** : 50m (165 ft) only for projector

- 14-pin (male) ↔ 14-pin (female)
- DXC-D30/D30WS/327B ↔ VO-8800/CMA-8A, S-VHS VTR
- VPH-G90U/G70Q/G70VRU/D50Q ↔ PC1271



CCQX-3 (14-pin/XLR 4-pin)

- 14-pin (male) ↔ XLR 4-pin (female), 3m (10 ft)
- For external DC input to DSR-300/UVW-100B, CA-537/327 from CMA-8A



CCXC-9DBS (9-pin/5BNCs)

- 9-pin D-sub (male) ↔ BNCs (R/G/B/SYNC/VBS) (male)
- 5m (16.4 ft)
- For video output from DXC-H10/950/9000/390



CCZ-A cables (26-pin/26-pin)

- CCZ-A2** : 2m (6.5 ft)
- CCZ-A5** : 5m (16.5 ft)
- CCZ-A10** : 10m (33 ft)
- CCZ-A25** : 25m (82 ft)
- CCZ-A50** : 50m (164 ft)
- CCZ-A100** : 100m (330 ft)

- 26-pin (male) ↔ 26-pin (female)
- DXC-D30/D30WS/327B series ↔ CCU-M7/M5
- UVW-100B ↔ BVW-50
- DXC-H10 ↔ CMA-H10



CCZQ-A cables (14-pin/26-pin)

- CCZQ-A2** : 2m (6.6 ft)
- CCZQ-A5** : 5m (16.5 ft)
- CCZQ-A10** : 10m (33 ft)

- 14-pin (male) ↔ 26-pin (female)
- CA-537, DSR-300/UVW-100B ↔ VO-8800, S-VHS VTR
- CA-537 ↔ CMA-8A



5 Connecting cables

RCC-A cables (15-pin/15-pin)

RCC-5A : 5 m (16 ft)
RCC-11A : 10 m (33 ft)

- 15-pin (male) ↔ 15-pin (female)
- BVE-600 ↔ MXP-290
- BVE-910 (with BKE-916A) ↔ MXP-290



RCC-5AA cable (9-pin/15-pin)

Audio mixer control cable

- 9-pin (male) ↔ 15-pin (female), 5m (16ft)
- PVE-500 ↔ MXP-290



RCC-5F (33-pin/33-pin)

Remote control cable

- 33-pin (male) ↔ 33-pin (female), 5m (16.4 ft)
- RM-450/500/555/580 ↔
- All Type-5/7/9 VTRs, EVO-9800A/9850



RCC-15FT (33-pin/33-pin)

Remote control extension cable

- 33-pin (male) ↔ 33-pin (female), 15 m (49.2 ft)
- RM-440/450/500/550/580 ↔
- All Type-5/7/9 VTRs, EVO-9800A/9850



RCC-G cables (9-pin/9-pin)

RCC-5G : 5 m (16 ft)
RCC-10G : 10 m (33 ft)
RCC-30G : 30 m (99 ft)

- 9-pin (male) ↔ 9-pin (male)
- PVW-2800/2650/2600, UVW-1800/1600, DSR-2000/85/80/70/60/40, SVO-5800, SVP-5600 ↔ 9-pin equipped Sony machines



SIC-M cables (14-pin/14-pin)

SIC-M1 : 1m (3.3ft)
SIC-M5 : 5m (16.4ft)
SIC-M15 : 15m (49ft)
SIC-M25 : 25m (82ft)
SIC-M50 : 50m (164ft)

- 14-pin (male) ↔ 14-pin (female)
- VPH-G90U/G70Q/G70VRU/D50Q ↔ PC-1271



SYC cables (4-pin/4-pin)

SYC-2 : 2 m (6.4 ft)
SYC-5 : 5 m (16.4 ft)

- Mini DIN 4-pin (male) ↔ Mini DIN 4-pin (female)
- PVW/UVW series VTRs
- DSR series VTR
- SVO-5800/9600, SVP-5600/9000
- SVT-S3100



UGC cables (BNC/BNC)

UGC-1 : 1m (3.3 ft)
UGC-2 : 2m (6.4 ft)
UGC-5 : 5m (16.4 ft)
UGC-10 : 10m (33 ft)

- BNC (male) ↔ BNC (male), 3C-2V



VDC-5A (7-pin/7-pin)

Dubbing cable

- 7-pin (male) ↔ 7-pin (female), 5 m (16.4 ft)
- VTRs with ↔ VTRs with
- DUB connector DUB connector
- VCS-500
- DA-500
- DA-500 ↔ DA-500



5 Connecting cables

VDC-C5 (12-pin/12-pin)

Dubbing cable

- 12-pin/12-pin, 5 m (16 ft)
- PVW series VTRs
- UVW-1800/1600



VMC cables (8-pin/8-pin)

- VMC-3P : 3m (10 ft)
- VMC-5P : 5m (16.4 ft)
- VMC-10P : 10m (33 ft)

- 8-pin (male) ↔ 8-pin (male)
- VTR ↔ Monitor
TV tuner
- TV tuner ↔ projector



VMC-1MQ (14-pin/8-pin)

- 14-pin (male) ↔ 8-pin (male), 1.5m (5 ft)
- VO-6800/8800 ↔ Monitor
TV tuner



VMC i.LINK cables

(4-pin/4-pin)

VMC-IL4415: 1.5 m(5 ft)

VMC-IL4435: 3.5 m(12 ft)

(4-pin/6-pin)

VMC-IL4615: 1.5 m(5 ft)

VMC-IL4635: 3.5 m(12 ft)

(6-pin/6-pin)

VMC-IL6615: 1.5 m(5 ft)

VMC-IL6635: 3.5 m(12 ft)

- DVCAM series



VK-110A/120A (4-pin/4-pin)

VK-110A : 10m (33 ft)

VK-120A : 20m (65.6 ft)

- 4-pin (male) ↔ 4-pin (male)
- SSC-530AM ↔ SSM-721AMR



VK-305 (4-pin/4-pin)

•4-pin (male) ↔ 4-pin (female), 5m (16.4 ft)

- Water-resistant extension cable
- SSC-530AM ↔ SSM-721AMR



VK-310A/318A/320A (4-pin/4-pin)

VK-310A : 10m (33 ft)

VK-318A : 18m (59 ft)

VK-320A : 20m (65.6 ft)

- 4-pin (male) ↔ 4-pin (male)
- SSC-530AM ↔ SSM-721AMR



Audio connecting cords



RK-5XLRF

- RK-5XLRF: XLR-3-11C type (female)—phono, 5m
- RK-5XLRM: XLR-3-12C type (male)—phono, 5m

5 Connecting cables

Cable connections

		Video camera					
		DXC-D30/D30WS/ 327B with CA-537	DXC-D30/D30WS/ 327B with CA-327	DXC-9000	DXC-950	DXC-107A	DXC-H10
VTR	VO-8800 or S-VHS VTR	CCQZ-A	CCQ-BRS	---	---	---	---
	CCU-M7	CCZ-A	---	---	---	---	---
Camera control unit	CCU-M5	CCQZ-A	CCQ-AM	CCTZ-3RGB/3YC+ CCZ-A or CCTQ-3RGB+ CCQ-AM	CCTZ-3RGB/3YC+ CCZ-A or CCTQ-3RGB+ CCQ-AM	---	---
	CMA-8A	CCZQ-A/ CCQX-3	CCQ-BRS/ CCQX-3	---	---	---	---
Camera AC adaptor	CMA-D7	---	---	---	---	CCMC-12P/UGC	---
	CMA-D2	---	---	CCDC/CCMC-12P	CCDC/CCMC-12P	CCDC/CCMC-12P	---
	CMA-H10	---	---	---	---	---	CCZ-A

6-1 Betacam SP Videocassette Tapes

BCT MA Series Metal Videocassette Tapes

BCT-5MA/10MA/20MA/30MA (Small cassettes)
BCT-5MLA/10MLA/20MLA/30MLA/60MLA/90MLA (Large cassettes)

Model	Tape length m (feet)	Playing time (min)	Mass* g (lb.)
BCT-5MA	42 (138)	6	231 (0.51)
BCT-10MA	78 (256)	12	241 (0.53)
BCT-20MA	150 (492)	24	256 (0.56)
BCT-30MA	222 (728)	36	276 (0.61)
BCT-5MLA	58 (190)	9	625 (1.38)
BCT-10MLA	93 (305)	15	63 (1.39)
BCT-20MLA	172 (564)	29	650 (1.43)
BCT-30MLA	243 (797)	39	660 (1.45)
BCT-60MLA	457 (1,499)	75	730 (1.61)
BCT-90MLA	670 (2,198)	110	790 (1.74)

*with case

- For Betacam SP 2000PRO VTRs
- Offers high C/N, low head-wear, reduced drop-outs and outstanding durability



UVWT Series Metal Videocassette Tapes

UVWT-10MA/20MA/30MA (Small cassettes)
UVWT-60MLA/90MLA (Large cassettes)

Model	Tape length m (feet)	Playing time (min)	Mass* g (lb.)
UVWT-10MA	78 (256)	12	241 (0.53)
UVWT-20MA	150 (492)	24	256 (0.56)
UVWT-30MA	222 (728)	36	276 (0.61)
UVWT-60MLA	457 (1,499)	75	730 (1.61)
UVWT-90MLA	670 (2,198)	110	790 (1.74)

*With case

- For Betacam SP UVW series VTRs
- Offers high quality and outstanding durability



6-2 DVCAM Videocassette Tape

PDV-ME Series Digital Videocassette Tapes

PDVM-12ME/22ME/32ME/40ME (Mini size)
PDV-34ME/64ME/94ME/124ME/184ME (Standard size)

Model	Tape length m (feet)	Recording/Playing time (min)	Mass* g (lb.)
PDVM-12ME	24 (79)	12	61 (0.134)
PDVM-22ME	41 (135)	22	62 (0.137)
PDVM-32ME	58 (190)	32	63 (0.139)
PDVM-40ME	71 (233)	40	64 (0.141)
PDV-34ME	61 (200)	34	124 (0.273)
PDV-64ME	112 (367)	64	128 (0.282)
PDV-94ME	163 (535)	94	132 (0.291)
PDV-124ME	214 (702)	124	135 (0.298)
PDV-184ME	315 (1,033)	184	142 (0.313)

*With case

- For DVCAM DSR series VTRs
- High output and high reliability due to pure cobalt advanced evaporated coating with DLC (Diamond Like Carbon) protective layer
- Built-in 16 kbit IC memory



PDV-MEM Series Digital Videocassette Tapes (Master Tape)

PDVM-32MEM/40MEM (Mini size)
PDV-64MEM/124MEM/184MEM (Standard size)

Model	Tape length m (feet)	Recording/Playing time (min)	Mass* g (lb.)
PDVM-32MEM	58 (190)	32	63 (0.139)
PDVM-40MEM	71 (233)	40	64 (0.141)
PDV-64MEM	112 (367)	64	128 (0.282)
PDV-124MEM	214 (702)	124	135 (0.298)
PDV-184MEM	315 (1,033)	184	142 (0.313)

*With case

- For DVCAM DSR series VTRs
- Offers high output, lower noise, higher C/N characteristics and extremely low error rates due to Hyper Evaticle II Magnetic Particles
- Ensures superior quality even at a four times high-speed transfer mode
- Built-in 16 kbit IC memory



6-2 DVCAM Videocassette Tape

PDV-N Series Digital Videocassette Tapes (Non IC type)

PDVM-32N/40N (Mini size)

PDV-64N/124N/184N (Standard size)

Model	Tape length m (feet)	Recording/Playing time (min)	Mass* g (lb.)
PDVM-32N	58 (190)	32	63 (0.139)
PDVM-40N	71 (233)	40	64 (0.141)
PDV-64N	112 (367)	64	128 (0.282)
PDV-124N	214 (702)	124	135 (0.298)
PDV-184N	315 (1,033)	184	142 (0.313)

*With case

- For DVCAM DSR Series VTRs
- High output and high reliability due to pure cobalt advanced evaporated coating with DLC (Diamond Like Carbon) protective layer
- Without IC Memory



PDV-12CL/PDVM-12CL Video Head Cleaning Cassette (for DVCAM)

- For DVCAM DSR Series VTRs



OTHER VIDEO
EQUIPMENT AND
ACCESSORIES

6-3 S-VHS Videocassette Tapes

ST Series S-VHS Videocassette Tapes

- Metal particle tape for S-VHS recording
- Anti-static lid to protect the tape from dirt and dust particles for low dropouts
- S-VHS mode recording can be activated via the detection holes on the back of the cassette
- Rugged, pro-type album case

Model name	Playing time* (min)	Tape length m (ft)	Mass* g (lb.)
ST-30	30	64 (210)	345 (0.76)
ST-60	60	125 (410)	360 (0.79)
ST-120	120	246 (807)	390 (0.86)

* Playing time = SP mode

**with case



7 Memory Stick™

MSA-4A/8A Memory Stick

•IC memory media which is designed for the coming generation after tape and disk. •Record and store still images and other data •Transfer the data to other products easily without cables •Compact and removable •Need no mechanism •Quick access •Simple 10-pin connection

Specifications

IC memory type:	Flash memory
Storage capacity:	4MB/8MB
Connector type:	10-pin connector
Clock speed:	Max. 20 MHz
Write speed:	Max. 1.50 MB/s
Read out speed:	Max. 2.45 MB/s
Power source:	2.7 V to 3.6 V
Power consumption (average):	Approx. 45 mA
Power consumption (standby):	Approx. 130 μ A
Dimensions:	Approx. 21.5(W) \times 50(H) \times 2.8(D) mm ($\frac{7}{8}$ \times 2 \times $\frac{1}{8}$ inches)
Mass:	Approx. 4 g



