

## SECTION 6 STILL IMAGE PRODUCTS

<b>1. Digital instant pass photo system</b>	
UPX-C21.....	194
<b>2. Printers</b>	
2-1. Digital color printers	
UP-D70A.....	195
UP-D70XR .....	196
UP-D6500/D6400/D6300 .....	197
UP-D5500 .....	198
UP-DP10.....	199
UP-D2600S.....	200
UP-D2600 .....	201
UP-D2500 .....	202
UP-D890 .....	203
2-2. Color video printers	
UP-7300MD .....	204
UP-7200.....	205
UP-5600MD .....	206
UP-5500.....	207
UP-2950MD/2900MD .....	208
UP-2800.....	209
UP-2300.....	210
UP-2100.....	211
2-3. Monochrome video graphic printers	
UP-980.....	212
UP-960.....	213
UP-895MD .....	214
UP-895.....	215
2-4. Printer accessories.....	216
<b>3. Film scanner</b>	
3-1. Film scanner	
UY-S90 .....	230
3-2. Film scanner accessories.....	231
<b>4. Digital print server</b>	
UPA-D3.....	232
<b>5. Digital still camera/recorder</b>	
5-1. Digital still camera	
DKC-ST5 .....	233
DKC-5000 .....	234
DKC-CM30 .....	235
DKC-FP3 .....	236
5-2. Digital still recorder	
DKR-700 .....	237
5-3. Digital still camera/recorder accessories.....	238

# 1 Digital instant pass photo system

## UPX-C21

### Digital instant pass photo system

- High quality prints suitable for ID (Identification) photographs
- Image can be checked on the LCD monitor before printing
- Alternative operating methods (no PC required)
  - docking with the Camera Station
  - via Camera Station RS-232C port, without docking

Supplied accessories: Operation manual (1)  
Set up/Quick reference sheet (1)  
Interface cable (1)  
AC adaptor (1)  
AC power cable for printer (1)  
AC power cable for AC adaptor (1)  
Paper tray (for UPC-2040A/2045/2070E) (1)  
Paper tray (for UPC-20S16/20S04/20S01/2010/2020) (1)  
Paper cover (1)  
Roller cleaning kit (1)  
Lithium ion battery NP-F550 (1)

Optional accessories: Self-laminating color printing pack UPC-2040A (for 120 prints)  
Self-laminating color printing pack UPC-2045 (for 120 prints)  
Color postcard printing pack UPC-2070E (for 150 prints)  
16-split Self-adhesive pre-cut color printing pack UPC-20S16 (for 200 prints)  
4-split Self-adhesive pre-cut color printing pack UPC-20S04 (for 200 prints)  
Self-adhesive color printing pack UPC-20S01 (for 200 prints)  
Color printing pack UPC-2010 (for 200 prints)  
Black and white printing pack UPC-2020 (for 200 prints)  
Remote control unit RM-91  
Paper ejector UPA-2001  
Roller cleaning kit UPA-2003  
AC adaptor PCS-AC08

### Specifications

#### UPX-C21

Safety standards: EN60950, EN61000-3-2, EN61000-3-3, UL 1950, CSA C22.2 No. 950  
EMC: EN50081-1 class B, EN50082-1 class B, AS/NZS-4251.1, AS/NZS-4252.1, FCC PART15 Class A Digital Equipment, IC ES-003 Class A Digital Equipment

#### (Camera)

Imager: 1/2.7-inch IS CCD with 1,300,000 pixels  
Data size: SXGA  
Compression: JPEG  
Memory: Internal memory  
Image capacity: Hi1: Minimum 5 images(SXGA)  
Hi2: Minimum 10 images(SXGA)  
S: 30 images(VGA)

#### White balance:

Internal flash mode: AWB/Manual (4,000/4,400/4,800/5,200/5,600/6,000/Auto/One push W.B)

External flash mode: Manual (4,000/4,400/4,800/5,200/5,600/6,000/6,500/7,000K)

Lens: Zoom (12 mm-15.6 mm)  
Iris: 2 position F4.7 (T)-F4 (W), F13.5 (T)-F11.4 (W)  
Auto exposure: Except external flash light  
Focus: Auto focus(0.8 m and over)  
Flash: Internal flash (with Defuser, GN9), X terminal, Hot shoe

#### Data transfer time (Camera-Docking station):

Approx. 5 sec (VGA mode)

Shutter speed: Auto, 1/250 seconds (External flash mode)  
Sensitivity: ISO 100 equivalent  
LCD display: 1.8-inch TFT color LCD (Adjustable angle)  
Optical view finder: Included  
Digital interface: RS-232C (to Docking Station or PC)  
Video output: Composite video (1)  
Power supply: Lithium Ion Battery, DC IN 8.4 V  
Battery charge: Via Docking Station  
Power save mode: Equipped  
Shutter sound: Included



Dimension: 219 (W) × 200 (H) × 71 (D) mm  
(8 5/8 × 7 7/8 × 2 7/8 inches)  
Mass: Approx. 1 kg (2 lb 3 oz)

#### (Docking Station)

Dimension: 208 (W) × 44 (H) × 188 (D) mm  
(8 1/4 × 1 3/4 × 7 1/2 inches)  
Mass: Approx. 550 g (1 lb 3 oz)

#### (Printer)

Printing method: Dye sublimation printing  
Resolution: 310 dpi  
Gradation: 256 levels each for Yellow, Magenta and Cyan (16.7 million colors per dot)  
Paper tray capacity: 200 sheets  
Power requirement: 100 to 120 V, 50/60Hz  
Power consumption: Approx. 1.8 A  
Printing time: Approx. 97 seconds (UPC-2040A)  
Approx. 70 seconds (UPC-2045)

Approx. 50 seconds (UPC-2070E/20S16/20S04/20S01/2010/2020)

Dimension: 370 (W) × 125 (H) × 417 (D) mm  
(14 5/8 × 5 × 16 1/2 inches)  
Mass: 9.5 kg (23 lb 2 oz)

## 2-1 Digital color printers

### UP-D70A

#### Digital color printer

- Photo quality and high speed digital color printing with 300dpi •256 gradations and over 16 million color reproduction per pixel •Letter size print (216 × 279 mm/8 5/8 × 11 inches) in approx. 85 seconds (Approx. 55 seconds in the 150 dpi print mode) •Provides superb bit-map printing through a SCSI and Centronics interface facility •Full-bleed Letter size (216 × 297mm/8 5/8 × 11 3/4 inches) image printing
- Gray balance adjustments for delicate gray color reproduction •Color management by ICC profiles
- A wide range of optional accessories including printer driver software, add-on memory, for easy system expansion
- Compatibility with Windows® 95/98/NT and Macintosh® OS

Supplied software\* (provided by hybrid CD-ROM)

Printer driver (SCSI, Centronics) for Windows for Work Groups 3.11, Windows 3.1, Windows 95/98  
Printer driver (SCSI) for Windows NT4.0  
Chooser driver for Mac OS  
Photoshop plug-in (SCSI, Centronics) for Windows for Work Groups 3.11, Windows 3.1, Windows 95/98  
Photoshop plug-in (SCSI) for Windows NT4.0  
Photoshop plug-in for Mac OS  
Test chart data for grey balance adjustment (TIFF and Photoshop format)  
ICC profiles

Supplied accessories:

Ink Ribbon Holder  
Paper Tray  
Paper Cover  
AC Power Cable  
Operation Manual  
Fan Filter  
Thermal Head Cleaning Kit

Optional Print Packs:

Letter size self-laminating color print pack UPC-741  
Letter plus size self-laminating color print pack UPC-747  
Letter size color print pack UPC-8811  
Letter plus size color print pack UPC-8817  
Letter size B&W print pack UPC-8821  
Letter size self-laminating color print pack UPC-8841A



STILL IMAGE  
PRODUCTS

#### Specifications

Printing Method:	Dye sublimation printing		Paper Tray Capacity:	100 sheets
Resolution:	300 dpi or 150 dpi selectable		Interface:	SCSI and Centronics
Gradations:	256 levels each for YMC (16.7 million colors per dot)		Picture Memory:	30MB
Effective Print Pixels:	Letter Size:	300 dpi; 2,400 × 3,000 dots	Power Requirements:	AC 120 V, 50/60 Hz
		150 dpi; 1,200 × 1,500 dots	Power Consumption:	Max. 270 W
Print Area:	Letter Plus Size:	300 dpi; 2,550 × 3,508 dots	Dimensions:	Less than 30W (Stand-by mode)
		150 dpi; 1,275 × 1,754 dots		493.8(W) × 189(H) × 468.8(D)mm (19 1/2 × 7 1/2 × 18 1/2 inches)
Paper Area:	Letter Size:	203.2 × 254 mm (8 × 10 inches)	Mass:	19 kg (41 lb 14 oz)
	Letter Plus Size:	216 × 297 mm (8 5/8 × 11 3/4 inches)	Safety Standards:	UL1950, CSA C22.2 No.950
Printing Time: (Color)	Letter Size:	Standard 300 dpi; 85 sec.		
		Laminating 150 dpi; 55 sec.		
Printing Time: (B/W)	Letter Plus Size:	300 dpi; 90 sec.		
		150 dpi; 60 sec.		

\* Printer driver for Silicon graphics WS is provided as freeware from SonyDrive.  
The newest driver software is provided at the following address: <http://www.sony.co.jp/DP-driver-E>.

## 2-1 Digital color printers

### UP-D70XR

#### Digital medical printer

- Designed to achieve optimum print quality from digital medical modalities with both color and grayscale outputs
- X-ray images are clearly reproduced on the UPT-731BL Blue Thermal Transparent Film
- Prints X-ray images out in just 44 seconds (using UPT-731BL Blue Thermal Film)
- Photo quality color printing with dye sublimation printing technology
- Color Letter size image is printed out in approximately 85 seconds (in 300 dpi mode) or 55 seconds (in 150 dpi mode) or 115 seconds on lamination media
- Complies with DICOM\* standard with optional UPA-D3 Digital Print Server
- Can daisy chain up to six printers and receive data or commands on TCP/IP protocols
- Gray balance adjustments for delicate grey color reproduction
- Detachable dust filter
- Environmentally friendly dry printer which requires neither liquid chemicals nor the use of heavy metals such as silver
- Complies with the Energy Star Program, with a power consumption in stand-by mode of less than 30 W
- Provides superb bit-map printing through a SCSI and Centronics interface facility
- Compatible with Windows 95/98, Windows NT 4.0 and Macintosh OS

\* DICOM (the Digital Imaging Communication in Medicine) is standardised by ACR (The American College of Radiology) and NEMA (the National Electrical Manufacturers Association).



Supplied software (provided by hybrid CD-ROM):

- Printer Driver (SCSI, Centronics) for Windows for Work groups 3.11, Windows 3.1, Windows 95/98
- Printer Driver (SCSI) for Windows NT 4.0
- Chooser Driver for Mac OS
- PhotoShop plug-in (SCSI, Centronics) for Windows for Work groups 3.11, Windows 3.1, Windows 95/98
- PhotoShop plug-in (SCSI) for Windows NT 4.0
- PhotoShop plug-in for Mac OS
- Test chart data for grey balance calibration (TIFF and PhotoShop format)
- ICC Profiles

Supplied accessories:

- Ink Ribbon Holder (1)
- AC Power Code (1)
- Fan Filter (1)
- Paper Tray (1)
- Paper Cover (1)
- CD-ROM\* (1)
- Bottom Cover (1)
- Operation Manual (1)
- Thermal Head Cleaning Kit

Optional accessories:

- DICOM Print Server UPA-D3

Optional Print Packs:

- Letter Size Color Print Pack (100 prints) UPC-8811
- Letter Size B/W Print Pack (100 prints) UPC-8821
- Letter Size Self-laminating Color Print Pack (72 prints) UPC-741
- Letter Size Thermal Blue Transfer Film (100 prints) UPT-731BL
- Letter Plus Size Color Print Pack (100 prints) UPC-8817

Printing Time (Color):	Standard	Laminating
Letter Size:	300 dpi; approx. 85 sec.	approx. 115 sec.
	150 dpi; approx. 55 sec.	approx. 85 sec.
Letter Plus Size:	300 dpi; approx. 90 sec.	
	150 dpi; approx. 60 sec.	

Printing Time (B/W):	Standard
Letter Size:	300 dpi; approx. 55 sec.
	150 dpi; approx. 35 sec.

Printing Time (UPT-731BL):	Standard
Letter Size:	300 dpi; approx. 44 sec.

Memory:	30 MB
Interface:	SCSI, Centronics
Paper tray capacity:	100 sheets (max.)
Power consumption:	270 W (max.)
	Less than 30 W (stand-by mode)
Power requirements:	AC 120 V, 50/60 Hz
Dimensions:	493.8* (W) × 189 (H) × 468.8 (D) mm (19 1/2* × 7 1/2 × 18 1/2 inches) (*502.3 mm (19 3/4 inch) with fan filter)
Mass:	19 kg (41 lb 14 oz)
Safety standards:	UL1950, CSA C22.2 No.950, FCC PART15 Class A, ICES-003 Class A

#### Specifications

Printing Method:	Dye-Sublimation Printing (Color & B/W) Direct Thermal Printing (UPT-731BL)
Resolution:	300 dpi / 150 dpi selectable
Gradation:	256 levels each for Yellow, Magenta and Cyan
Effective Print Pixels:	
Letter Size:	300 dpi; 2,400 × 3,000 dots 150 dpi; 1,200 × 1,500 dots
Letter Plus Size:	300 dpi; 2,550 × 3,508 dots 150 dpi; 1,275 × 1,754 dots
Print Area:	
Letter Size:	203.2 × 254 mm (8 × 10 inches)
Letter Plus Size:	216 × 297 mm (8 5/8 × 11 3/4 inches)
Paper Size:	
Letter Size:	216 × 279 mm (8 5/8 × 11 inches)
Letter Plus Size:	222 × 322.4 mm (8 3/4 × 12 3/4 inches)

## 2-1 Digital color printers

### UP-D6500/D6400/D6300

#### Digital color printer

- Superb quality digital color printer for ID card production
- Dual-side printing (ISO 7810 standard card)
- Quick data download and high speed thermal lamination process — 45 sec. with CMYL ribbon
- SCSI-2 high-speed interface for high volume applications (UP-D6500)
- Magnetic stripe encoding (UP-D6500/D6400)
- Anti-forgery security lamination
- Template memory\*<sup>1</sup> feature (UP-D6500/D6400)
- Holds up to approx. 125\*<sup>2</sup> (UP-D6500: 250\*<sup>3</sup>) cards in the optional card feeder and card stacker
- Compatibility with Windows® 95/98\*<sup>4</sup> and NT OS

- Supplied accessories:
- Floppy Disk (1)
  - AC Power Cable (1)
  - Card Tray (1)
  - Operational Manual (1)
  - Ink Ribbon Holder (1)
  - Cleaning Roller Holder Set (1)
- Consumables:
- 5UPR-6040 Color Ink Ribbon (CMYL)  
250 prints × 5 rolls
  - 5UPR-6080 Color Ink Ribbon (CMYKL)  
200 prints × 5 rolls
  - UPR-6025 Black and White Ribbon (K) Approx.  
1000 prints × 1 roll
- Optional accessories:
- UPA-6002 Auto Card Stacker
  - UPA-6003 Auto Card Feeder
  - UPU-D65H Thermal Head



UP-D6500 with UPA-6003 Auto Card Feeder



UP-D6500



UP-D6400/D6300

#### Specifications

- Printing method: Dye sublimation printing
- Resolution: 300 dpi
- Gradation: 256 gradations for Yellow, Magenta and Cyan
- Printing time: Approx. 45 seconds per side with CMYL ribbon
- Interface: SCSI-2 (UP-D6500 only), IEEE standard 1284
- Card supply\*<sup>2</sup>: Approx. 125 cards with the optional UPA-6003 Auto Card Feeder  
(UP-D6500: 250 cards when using two of the optional UPA-6003 Auto Card Feeder)
- Card stack\*<sup>2</sup>: Approx. 125 cards with the supplied card tray  
(UP-D6500: 250 cards when using the optional UPA-6002 Auto Card Stacker)
- Power requirements: AC 120 V, 50/60 Hz
- Power consumption: AC 120 V: 130 VA
- Dimensions: 350 × 260 × 257 mm  
(13 7/8 × 10 1/4 × 10 1/8 inches)
- Mass: 11.5 kg (25 lb 6 oz)
- Safety regulations: UL1950, CSA C22.2 No.950

#### Acceptable PVC Cards Specifications

- Length: 85.47 to 93.00 mm (3 3/8 × 3 21/32 inches)
- Height: 53.92 to 60.00 mm (2 1/8 × 2 11/32 inches)
- Thickness\*<sup>5</sup>: 0.3 to 1.5 mm (12 × 59 mils)
- Color: Any color card acceptable (except transparency)
- Surface Material: Dye sublimation compatible PVC (unlaminated)
- Surface: Gloss finish (polished)
- Other: No residue, dust or blemishes allowed
- Magnetic stripe encoding standards:
- ISO / IEC7811-2, -4, -5, -6
  - Coercivity 300/2750/4000 Oe
- Smart card encoding standards:
- ISO / IEC7816-1, -2, -3, -4
  - EMV, Protocol T=1.0

\*<sup>1</sup> For details, please consult your nearest Sony office.

\*<sup>2</sup> In case of the card thickness is 0.76 mm.

\*<sup>3</sup> In case of the card thickness is 0.76 mm and combining optional UPA-6002 Auto Card Stacker with two of UPA-6003 Auto Card Feeder.

\*<sup>4</sup> Can be operated using the Windows 95 driver software.

\*<sup>5</sup> The initial setting is 0.76 mm. Some adjustments may be required.

## 2-1 Digital color printers

### UP-D5500

#### Digital color printer

•Dye sublimation printing for photo-quality prints with over 16 million color reproduction •A high resolution of 300 dpi provided by a high resolution thermal head with 2048 elements •A5 size color prints provided in a mere 40 seconds •SCSI and IEEE-1284 (supporting the ECP mode) interfaces for mutual communication between the printer and the connected equipment •Compact and convenient operating design •Compatibility with Windows® 95/98\*1/NT and Macintosh® OS •Complies with the MDD

- Supplied accessories:
- Ink ribbon holder
  - Paper tray
  - Paper cover
  - AC power cable
  - Operational manual
  - Color print pack (for 20 prints)
  - Printer driver disk for Windows 95 and Macintosh computers
- Optional accessories:
- Color printing pack (ink ribbon holder not included) UPC-5510
  - Color printing pack (ink ribbon holder not included) 5UPC-5510
  - Color printing pack UPC-5510C\*2
  - Additional ink ribbon holder UPA-5500



#### Specifications

##### Printing Performance

- Printing Method: Dye sublimation printing
- Thermal Head: 2048 dots (300dpi)
- Gradation: 256 level each for Yellow, Magenta and Cyan (16.7 million colors per dot)
- Effective Print Pixels: 1,536 × 2,408 dots
- Print Area: 132.1 × 176.1mm (5 1/4 × 7 inches)
- Printing Time: Approx. 40 sec.
- Picture Memory: 2048 × 2048 × 8 bit per R/G/B
- Interface Port: SCSI
- IEEE-1284

##### General

- Paper Tray Capacity: 100 sheets
- Power Requirements: AC 100 to 240V, 50/60Hz
- Power Consumption: Max. 250W
- Dimensions: 424(W) × 125(H) × 475(D)mm (excluding projecting parts) (16 3/4 × 5 × 18 3/4 inches)
- Mass: 17kg (37 lb 11 oz)
- Safety Standards: EN60950, EN60601-1, MDD

\*1 Can be operated using the Windows 95 driver software. For operation details, please consult your nearest Sony office.

\*2 The UPC-5510C is not available in some areas. For further details, please consult your nearest Sony office.

## 2-1 Digital color printers

### UP-DP10\*1

#### Digital photo printer

- Dye sublimation printing for photo-quality prints with over 16 million color reproduction
- Printing time is approx. 85 seconds with the high resolution of approx. 300 dpi
- Borderless image printing is available with the optional color print pack UPC-10P23E and UPC-10P34 by tearing off the border tabs along the perforations
- 4 x 6 inch size printouts with UPC-10P23E
- 4 x 5 3/8 inch size printouts with UPC-10P34
- Selectable print finish: glossy, matte and texture
- Compact and unique design which can be set vertically or horizontally
- Equipped with IEEE-1284 (Compatible, Nibble, ECP) and USB (ver.1.0) interface.
- Bundled with the driver software which applies Auto Color Adjustment Function for brightness and color balance
- Bundled with the application software

- Supplied accessories: CD-ROM (1)  
Power Code (1)  
Paper Tray (1)  
Operation Manual (1)
- Optional accessories: Self-laminating Color Print Pack UPC-10P23E (for 25 prints)  
Self-laminating Color Print Pack UPC-10P34 (for 25 prints)  
Self-laminating Sticker Print Pack UPC-10S01 (for 25 prints)

#### Specifications

- Printing method: Dye sublimation printing
- Resolution: Approx. 300 dpi
- Gradations: 256 gradations for yellow, magenta, cyan  
Over 16.7 million colors per dot
- Picture elements: 1,162 × 1,765 dots (UPC-10P23E)  
1,162 × 1,563 dots (UPC-10P34)  
1,162 × 1,800 dots (UPC-10S01)
- Paper size: 180 × 100 mm (UPC-10P23E, UPC-10P34, UPC-10S01)  
(7 1/8 × 4 inches)
- Print size: 152 × 100 mm (UPC-10P23E)\*2  
(6 × 4 inches)  
134 × 100 mm (UPC-10P34)\*2  
(5 3/8 × 4 inches)  
180 × 100 mm (UPC-10S01)  
(7 1/8 × 4 inches)
- Printing time: Approx. 85 sec./sheet
- Interface: USB (ver 1.0)  
IEEE-1284 (Compatible, Nibble, ECP)
- Paper capacity: 25 sheets
- Supplied printer driver software: Windows 95/98, Mac OS 8.6 or later
- Power requirements: Approx. 1.0 A/100 to 120 V
- Dimensions: 208 (W) × 71 (H) × 303 (D) mm  
(8 1/4 × 2 7/8 × 12 inches)
- Mass: Approx. 2.7 kg (20 lb 15 oz)



\*1 This product is not available in some areas.

\*2 After tearing off border tabs.

## 2-1 Digital color printers

### UP-D2600S

#### Digital color printer

- Photo-quality prints with Sony Dye sublimation printing technology with over 16 million color variations
- Advanced thermal head provides 310 dpi (dots per inch) high resolution and the digital process provides high-quality prints with a maximum of 1365 (H) x 1024 (V) dots (standard) and 1646 (H) x 1024 (V) dots (large)
- By using the optional UPC-2045 Self-laminating Color Print Pack, the prints are outputted with a laminating layer with three types of finishes: Glossy, Texture and Matte
- ICC profiles supplied
- Near A6-size print (130 x 88 mm (5 1/8 x 3 1/2 inches)) can be printed in approximately 50 seconds
- Laminated type (UP-2045) can be printed out in 70 seconds
- Equipped with a SCSI-2 interface which enables fast data transfer at up to 10 MB/s and allows multiple printers to be used
- Three color plane memories to free the computer after the image is transferred to the printer
- Compatible with Windows NT 4.0, Windows 95/98 and Macintosh OS
- Picture scaling function
- 200 (standard) /150 (large)-sheet paper feed capacity
- Front panel operation



Supplied accessories:	AC Power Cable (1)
	Paper Tray (2) (Standard and Large)
	Paper Cover (1)
	Roller Cleaning Kit (1)
	Operation Manual (1)
	CD-ROM with printer driver included (1)
	(for Windows 95/98, Windows NT 4.0, Mac OS 8.0 or later and Photoshop plug-in for both Windows and Macintosh platforms)
Optional accessories	Color Printing Pack UPC-2010 (for 200 prints)
	Black and White Printing Pack UPC-2020 (for 200 prints)
	Self-laminating Color Printing Pack UPC-2045 (for 120 prints)
	Self-laminating Color Printing Pack UPC-2040A (for 120 prints)
	Color Postcard Printing Pack UPC-2070E (for 150 prints)
	16-split Self-adhesive Pre-cut Color Printing Pack UPC-20S16 (for 200 prints)
	4-split Self-adhesive Pre-cut Color Printing Pack UPC-20S04 (for 200 prints)
	Self-adhesive Color Printing Pack UPC-20S01 (for 200 prints)
	Paper Ejector UPA-2001
	Roller Cleaning Kit UPA-2003

#### Specifications

Printing method:	Dye sublimation printing
Resolution:	310 dpi or 155 dpi selectable
Gradation:	256 gradations for Yellow, Magenta, Cyan Over 16.7 million colors per dot
Printing paper size:	UPC-2010/2020/20S01/20S04/20S16: 130 x 88 mm (5 1/8 x 3 1/2 inches) UPC-2045/2040A/2070/2070E: 148 x 100 mm (5 7/8 x 4 inches)
Printed picture size:	Standard: max. 112 x 84 mm (4 1/2 x 3 3/8 inches) Large: max. 135 x 84 mm (5 3/8 x 3 3/8 inches)
Picture elements:	Standard: 1365 x 1024 dots Large: 1646 x 1024 dots
Picture memory:	3 color planes (6 MB)
Printing time:	Approx. 50 seconds (When using the UPC-2045: Approx. 70 seconds, UPC-2040A: Approx. 97 seconds)
Interface port:	SCSI-2
Paper tray capacity:	Standard size paper tray: 200 sheets (UPC-2010/2020/20S01/20S04/20S16) Large size paper tray: 120 or 150 sheets (UPC-2045/2040A/2070/2070E)
Picture scaling function:	VGA mode (640 x 480 dots), SVGA mode (800 x 600 dots), XGA mode (1,024 x 768 dots)
Power requirements:	120 V, 50/60 Hz
Power consumption:	Approx. 1.8 A
Dimensions:	370 (W) x 125 (H) x 417 (D) mm (14 5/8 x 5 x 16 3/4 inches)
Mass:	Approx. 9.5 kg (20 lb 15 oz)
Safety regulations:	UL1950, 2601-1, CSA C22.2 No.125, 950



## 2-1 Digital color printers

### UP-D2600

#### Digital color printer

- Photo-quality prints with Sony Dye sublimation printing technology with over 16 million color variations
- Advanced thermal head provides 310 dpi (dots per inch) high resolution and the digital process provides high-quality prints with a maximum of 1365 (H) x 1024 (V) dots (standard) and 1646 (H) x 1024 (V) dots (large)
- By using the optional UPC-2045 Self-laminating Color Print Pack, the prints are outputted with a laminating layer with three types of finishes: Glossy, Texture and Matte
- ICC profiles supplied
- Near A6-size print (130 x 88 mm (5 1/8 x 3 1/2 inches)) can be printed in approximately 50 seconds
- Laminated type (UP-2045) can be printed out in 70 seconds
- Equipped with a Parallel (IEEE-1284) interface
- Supports the bi-Centronics ECP mode
- Three color plane memories to free the computer after the image is transferred to the printer
- Compatible with Windows NT 4.0, Windows 95/98
- Picture scaling function
- 200 (standard) /150 (large)-sheet paper feed capacity
- Front panel operation

Supplied accessories:	AC Power Cable (1)
	Paper Tray (2) (Standard and Large)
Optional accessories:	Paper Cover (1)
	Roller Cleaning Kit (1)
	Operation Manual (1)
	CD-ROM with printer driver included (1)
	(for Windows 95/98, Windows NT 4.0 and Photoshop plug-in for Windows 95/98)
	Color Printing Pack UPC-2010 (for 200 prints)
	Black and White Printing Pack UPC-2020 (for 200 prints)
	Self-laminating Color Printing Pack UPC-2045 (for 120 prints)
	Self-laminating Color Printing Pack UPC-2040A (for 120 prints)
	Color Postcard Printing Pack UPC-2070E (for 150 prints)
	16-split Self-adhesive Pre-cut Color Printing Pack UPC-20S16 (for 200 prints)
	4-split Self-adhesive Pre-cut Color Printing Pack UPC-20S04 (for 200 prints)
	Self-adhesive Color Printing Pack UPC-20S01 (for 200 prints)
	Paper Ejector UPA-2001
	Roller Cleaning Kit UPA-2003

#### Specifications

Printing method:	Dye sublimation printing
Resolution:	310 dpi or 155 dpi selectable
Gradation:	256 gradations for Yellow, Magenta, Cyan
Printing paper size:	Over 16.7 million colors per dot
	UPC-2010/2020/20S01/20S04/20S16: 130 x 88 mm (5 1/8 x 3 1/2 inches)
Printed picture size:	UPC-2045/2040A/2070/2070E: 148 x 100 mm (5 7/8 x 4 inches)
	Standard: max. 112 x 84 mm (4 1/2 x 3 3/8 inches)
Picture elements:	Large: max. 135 x 84 mm (5 3/8 x 3 3/8 inches)
	Standard: 1365 x 1024 dots
Picture memory:	Large: 1646 x 1024 dots
	3 color planes (6 MB)
Printing time:	Approx. 50 seconds
	(When using the UPC-2045: Approx. 70 seconds, UPC-2040A: Approx. 97 seconds)
Interface port:	IEEE standard 1284-1994 (Compatible, Compatible Nibble and ECP modes)
Paper tray capacity:	Standard size paper tray: 200 sheets (UPC-2010/2020/20S01/20S04/20S16)
	Large size paper tray: 120 or 150 sheets (UPC-2045/2040A/2070/2070E)
Picture scaling function:	VGA mode (640 x 480 dots), SVGA mode (800 x 600 dots), XGA mode (1,024 x 768 dots)
Power requirements:	120 V, 50/60 Hz
Power consumption:	Approx. 1.8 A
Dimensions:	370 (W) x 125 (H) x 417 (D) mm (14 5/8 x 5 x 16 3/4 inches)
Mass:	Approx. 9.5 kg (20 lb 15 oz)
Safety regulations:	UL1950, 2601-1, CSA C22.2 No.125, 950



## 2-1 Digital color printers

### UP-D2500

#### Digital color printer

- High quality print with digital process in the frame memory in 8-bit/256 gradations and over 16 million colors per pixel
- High resolution of 310dpi, 1365(H) × 1024(V) dots
- Near A6 size print (130 × 88 mm/5 1/8 × 3 1/2 inches) in approx. 50 seconds
- Easy-to-use operation with function menu display on an associated monitor
- Standard IEEE 1284 interface for mutual communication between the printer and the connected equipment
- 200 Sheets paper feed capacity
- Compatibility with Windows® 95/98/NT and Macintosh® OS

Supplied accessories:	Color printing pack (for 10 prints) Paper tray (1) Paper cover (1) AC power cable Operation manual Printer driver for Windows 95/98 OS and Macintosh OS
Optional accessories:	Color printing pack UPC-2010 (for 200 prints) Black and white printing pack UPC-2020 (for 200 prints) Self-laminating color printing pack UPC-2040A (for 120 prints) Color postcard printing pack UPC-2070E (for 150 prints) Self-adhesive color printing pack UPC-20S01 (for 200 prints) 16-split Self-adhesive pre-cut color printing pack UPC-20S16 (for 200 prints) 4-split Self-adhesive pre-cut color printing pack UPC-20S04 (for 200 prints) Self-adhesive Color Printing Pack UPC-20S01 (for 200 prints) Paper ejector UPA-2001 Paper tray (for UPC-2040A and UPC-2070E) UPA-2002 Interface cable (for Macintosh) UPZ-2000M Roller cleaning kit UPA-2003



#### Specifications

Printing method:	Dye sublimation printing
Resolution:	310dpi or 155dpi selectable
Gradation:	256 gradations for Yellow, Magenta, Cyan Over 16.7 million colors per dot
Printing paper size:	130 × 88 mm (5 1/8 × 3 1/2 inches) (Self-laminating paper/Postcard: 148 × 100 mm)
Printed picture size:	Max. 112 × 84 mm (4 1/2 × 3 3/8 inches)
Picture elements:	1365 × 1024 dots
Picture memory:	Color plane (2MB)
Printing time:	Approx. 50 seconds (When using the UPC-2040A: Approx. 97 seconds)
Interface port:	Parallel (IEEE standard 1284-1994) (Compatible, Compatible Nibble and ECP modes)
Paper tray capacity:	200 sheets
Power requirements:	120 V, 50/60 Hz
Power consumption:	Approx. 1.8 A
Dimensions:	370(W) × 125(H) × 417(D) mm (14 5/8 × 5 × 16 1/2 inches)
Mass:	9.5 kg (23 lb 2 oz)
Safety regulations:	UL1950, 2601-1, CSA C22.2 No.125, 950

## 2-1 Digital color printers

### UP-D890

#### Digital graphic printer

•Monochrome digital graphic printer with 1024 picture element (horizontally) and 256 steps of gradation •A fast printing speed: approx 5.5 seconds •Compact (154 × 106 × 303 mm/6 1/8 × 4 1/4 × 12 inches) and lightweight (3.6 kg/7 lb 16 oz) •Conforms to the bi-Centronics standard for direct connection to equipment such as a computer and electronic microscope and mutual communication between the printer and connected equipment •Panoramic-size printing capable with an additional 4MB memory •Printing paper selectable from UPP-110HA superior density type UPP-110HD high density type or the UPP-110S normal type thermal paper •Three gradations selectable; Soft, Standard and Hard (when using the UPP-110HA or UPP-110HD high density thermal paper) •Complies with the MDD

Supplied accessories: AC power cable  
Paper roll UPP-110HA  
Head cleaning sheet  
Printer Driver for Windows 3.1/95  
Operation manual

Optional accessories: Printing paper UPP-110S  
High density printing paper UPP-110HD  
Superior Density Printer Paper UP-110HA

#### Specifications

Thermal head:	Thin film thermal head 1024 dots drive
Gradation:	256 grey levels
Printed picture size:	100 × 100 mm ±1.5% (1024 × 1024 dots)
Printing speed:	Approx. 5.5 s/print
Picture elements:	1024(H) × 1024(V) dots
Interface connector:	bi-Centronics standard (IEEE STD P1284 Reverse-Nibble and ECP) 36-pin Amphenol type
Power requirements:	AC 120 V, 50/60 Hz
Power consumption:	Max. 1.6 A
Dimensions:	154(W) × 106(H) × 303(D) mm (6 1/8 × 4 1/4 × 12 inches)
Mass:	3.6 kg (8 lb)
Safety regulations:	UL1950, CSA C22.2 No.950



## 2-2 Color video printers

### UP-7300MD

#### Color video printer

•High quality full color print with digital process in the frame memory in 8-bit/256 gradations, and over 16 million colors per pixel •Its thermal head, with 1280 picture element dots, reproduces a high quality output with a resolution of 6.4 dots/mm •Letter size print (216 × 279 mm/8 5/8 × 11 inches) in approx. 125 seconds and a black and white image in approx. 60 seconds •OHP transparency prints for effective presentations •Multiscan capability; inputs over a wide range of horizontal scanning frequencies- 15 kHz to 89 kHz- is acceptable •Multiple inputs; four BNC connectors for 525 analog RGB signal input, DIN 4-pin for Y/C input and a BNC connector for NTSC composite signal input, and DN 50-20-pin multiple connector for analogue RGB high scan signal for connection with variety of computers and HDVS with optional cables •Menu operation with the function menu displayed on the printer's LCD and on an associated monitor •Set-up menu; horizontal and vertical picture size, H/V picture shift, aspect ratio, etc. •Up to 20 copies of consecutive printing capable •Various print modes; two, four, six, eight or sixteen different or duplicated image memory prints (525 line video images), four or six different image print mode (high scan images) •Remote control from a supplied wired or wireless remote control unit, or an external PC

Supplied accessories:	Remote control unit (wired/wireless) Cable for remote control unit (5 m) Ink ribbon holders for color, B&W and OHP materials Paper tray Paper cover Battery SUM-3 (2) AC power cable Operation and instruction manual
Optional Accessories	Color print pack UPC-7011 (for 100 prints) Black and white print pack UPC-7021 (for 100 prints) OHP print pack UPC-7031 (for 100 prints) RS-232C cross cable SMF-1015 Video interface cable for Macintosh UPZ-7000M Video interface cable for IBM PS55, PS/2, PS/V UPZ-7000I Interface cable for workstation UPZ-7001, UPZ-7002, UPZ-7003

#### Specifications

Printing method:	Dye sublimation printing
Thermal head:	1280 elements (6.4 dots/mm)
Printing paper size:	Letter (216 × 279 mm/8 5/8 × 11 inches) using the optional UPC-7011
Picture size:	<525/60 line signal> Max. 184 × 240 mm (7 1/4 × 9 1/2 inches) <Hi-scan signal> Max. 190 × 246 mm (7 1/2 × 9 3/4 inches)
Gradations:	256 levels process (Yellow, Magenta, Cyan) over 16 million colors per pixel
Scanning frequency:	15 kHz to 89 kHz
Picture memory:	Six frame memories (9 MB)
Printing time:	Approx. 125 seconds - Color, Macintosh II print Approx. 60 seconds - B & W print
Input:	RGB analog for Hi-Scan or HDVS signal*(DN 50-pin) RGB: 0.7 Vp-p, 75 Ω Sync: 1.0 to 5.0 Vp-p, 75 Ω RGB analog (525 line system) signal* (BNC (4)) RGB: 0.7 Vp-p, 75 Ω, unbalanced Sync: 0.3 to 4.0 Vp-p, negative, 75 Ω, unbalanced S-Video (Y/C separate, DIN 4-pin S terminal) Y: 0.5 to 2.0 Vp-p, sync negative, 75 Ω, unbalanced C: 0.3 Vp-p, 75 Ω, unbalanced Composite video (BNC) EIA/NTSC 0.5 to 2.0 Vp-p, sync negative, 75 Ω, unbalanced



Output:	RGB analog for Hi-Scan or HDVS signal (DN 50-pin)* RGB: 0.7 Vp-p, 75 Ω Sync: Through output RGB analogue signal (525 line scan) (BNC (4)) RGB: 0.7 Vp-p, 75 Ω, unbalanced Sync: 1.0 Vp-p, negative, 75 Ω, unbalanced S-Video (Y/C separate, DIN 4-pin S terminal) Y: 1.0 Vp-p, sync negative, 75 Ω, unbalanced C: 0.286 Vp-p, 75 Ω, unbalanced Composite video (BNC) EIA/NTSC 1.0 Vp-p, sync negative, 75 Ω, unbalanced
Control terminal:	RS-232C (D-sub 25-pin) REMOTE 1: Remote control jack (special mini) REMOTE 2: Foot switch jack (stereo mini)
Power requirement:	AC 100 to 120 V, 50/60 Hz
Power consumption:	290 W
Dimensions:	424(W) × 177(H) × 490(D)mm (16 3/4 × 7 × 19 3/8 inches)
Mass:	Approx. 19.2 kg (42 lb)
Safety regulations:	UL544, CSA C22.2 No.125

\* Note: The UP-7300MD can accept sync-on-G or external sync automatically.

## 2-2 Color video printers

### UP-7200

#### Color video printer

•High quality full color print with digital process in the frame memory in 8-bit/256 gradations, and over 16 million colors per pixel •Its thermal head, with 1280 picture element dots, reproduces a high quality output with a resolution of 6.4 dots/mm •Letter size print, 216 × 279 mm/8 5/8 × 11 inches in approx. 125 seconds and a black and white image in approx. 60 seconds •OHP transparency prints for effective presentations •Multiscan capability; inputs over a wide range of horizontal scanning frequencies – 15 kHz to 89 kHz – is acceptable •Multiple inputs; four BNC connectors for 525 analog RGB signal input, DIN 4-pin for Y/C (S-video) input and a BNC connector for NTSC composite signal input, and DN 50-20-pin multiple connector with analog RGB high scan signal for connection with a variety of computers and HDVS with optional cables •Menu operation using the function menu displayed on the printer's LCD and on an associated monitor •Set-up menu; horizontal and vertical picture size, H/V picture shift, aspect ratio, etc. •Up to 20 copies of consecutive printing capable •Various print modes; print mode, two, four, six, eight or sixteen different or duplicated image memory prints (525 line video images), four or six different image prints mode (high scan images) •Remote control from a supplied wired or wireless remote control unit, or an external PCs

Supplied accessories:	Remote control unit (wired/wireless)
	Cable for remote control unit (5m)
Optional accessories	Ink ribbon holders for color, B&W and OHP materials
	Paper tray
	Paper cover
	AA size R6 Battery (× 2)
	AC power cable
	Operation and instruction manual
	Color print pack UPC-7011 (for 100 prints)
	Black and white print pack UPC-7021 (for 100 prints)
	OHP print pack UPC-7031 (for 100 prints)
	Foot switch FS-20
	RS-232C cross cable SMF-1015
	Video interface cable for Macintosh UPZ-7000M
	Video interface cable for IBM PS55, PS/2, PS/V
	UPZ-7000I
	Interface cable for workstation UPZ-7001, UPZ-7002, UPZ-7003

#### Specifications

Printing method:	Dye sublimation printing
Thermal head:	1280 elements (6.4 dots/mm)
Printing paper size:	Letter (215.9 × 279.4 mm / 8 1/2 × 11 inches) using the optional UPC-7011
Picture size:	<525/60 line signal>
	Max. 180 × 240 mm (7 1/8 × 9 1/2 inches)
	<Hi-scan signal>
Gradations:	Max. 190 × 246 mm (7 1/2 × 9 3/4 inches)
	256 levels process (Yellow, Magenta, Cyan) over 16 million colors per pixel
Scanning frequency:	15 kHz to 89 kHz
Picture memory:	Six frame memories (9 MB)
Printing time:	Approx. 125 seconds - Color, Macintosh II print
	Approx. 60 seconds - B & W print



Input:	RGB analog for Hi-Scan or HDVS signal*(DN 50-pin)
	RGB: 0.7 Vp-p, 75 Ω
	Sync: 1.0 to 5.0 Vp-p, 75 Ω
	RGB analog (525 line system) signal* (BNC (4))
	RGB: 0.7 Vp-p, 75 Ω, unbalanced
	Sync: 0.3 to 4.0 Vp-p, negative, 75 Ω, unbalanced
	S-Video (Y/C separate, DIN 4-pin S terminal)
	Y: 0.5 to 2.0 Vp-p, sync negative, 75 Ω, unbalanced
	C: 0.286 Vp-p, 75 Ω, unbalanced
	Composite video (BNC)
Output:	EIA/NTSC, 0.5 to 2.0 Vp-p, sync negative, 75 Ω, unbalanced
	RGB analog for Hi-Scan or HDVS signal (DN 50-pin)*
	RGB: 0.7 Vp-p, 75 Ω
	Sync: Through output
	RGB analog signal (525 line scan) (BNC (4))
	RGB: 0.7 Vp-p, 75 Ω, unbalanced
	Sync: 1.0 Vp-p, negative, 75 Ω, unbalanced
	S-Video (Y/C separate, DIN 4-pin S terminal)
	Y: 1.0 Vp-p, sync negative, 75 Ω, unbalanced
	C: 0.286 Vp-p, 75 Ω, unbalanced
Control terminal:	Composite video (BNC)
	EIA/NTSC, 1.0 Vp-p, sync negative, 75 Ω, unbalanced
	RS-232C (D-sub 25-pin)
	REMOTE 1: Remote control jack (special mini)
	REMOTE 2: Foot switch jack (stereo mini)
	Power requirement:
	AC 100 to 120 V, 50/60 Hz
	Power consumption:
	290 W
	Dimensions:
Mass:	424(W) × 177(H) × 490(D) mm
	(16 3/4 × 7 × 19 3/8 inches)
	Approx. 19.2 kg (42 lb)
Safety regulations:	UL1950, CSA C22.2 No. 950

\* Note: The UP-7200 can accept sync-on-G or external sync automatically.

## 2-2 Color video printers

### UP-5600MD

#### Color video printer

- High quality print with digital process in the frame memory in 8-bit/256 gradations and over 16 million colors per pixel
- A thermal head with 2048 elements assures high quality output with a resolution of 300 dots per inch
- Four frame memories (Eight frame memory is possible with optional UPK-5500 frame memory board)
- A5 size print (210 × 148 mm/8 7/8 × 5 7/8 inches) in approx. 34 seconds
- Easy-to-use menu operation with function menu display on the printer's LCD and on an associated monitor
- Worldwide use (accepts EIA/NTSC video, CCIR/PAL video, 525 analog RGB, 625 analog RGB)
- Multiple video inputs; analog RGB, Y/C and composite video
- Remote control operation from optional wired/wireless remote control units RM-5500/91 and foot switch FS-30
- RS-232C port for external remote control from a PC
- Full color digital printing is possible using the optional four frame memory board UPK-5500 and SCSI interface board UPK-5502SC which includes A/D and D/A conversion function and printer driver software
- Multiple printing modes; 2,4,8 or 16 split print, 2,4,8 or 16 duplicate image print, composite print
- Up to 80 characters of caption setting
- The input image from a camera or a VTR can be displayed on an associated monitor looping through the UP-5600MD in the power off mode
- User-friendly operational design



UP-5600MDP with UPK-5502SC

Supplied accessories:	AC power cable Color print pack (for 20 prints) Paper tray Ink ribbon holder Operation manual
Optional accessories:	Four frame memory board UPK-5500 PAL memory board UPK-5501NP Digital interface board UPK-5502SC Wired/Wireless remote commander RM-5500 Remote control unit RM-91 Foot switch FS-30 Color printing pack UPC-5510/5UPC-5510* Color printing pack UPC-5510C Cassette for UPC-5510/5UPC-5510 UPA-5500

\*The UPC-5510/5UPC-5510 is not supplied with a cassette.

#### Specifications

Printing method:	Dye sublimation printing	Output:	Composite video (BNC) EIA/NTSC or CCIR/PAL 1.0 Vp-p, sync negative, 75 Ω, unbalanced**
Thermal head:	6.72 dots/mm (300dpi dots)		525 or 625 RGB analog* (BNC (4), R/G/B/Sync ) RGB: 0.7 Vp-p, 75 Ω, unbalanced Sync: 1.0 Vp-p, sync negative, 75 Ω, unbalanced
Printing paper size:	148 × 210 mm (5 7/8 × 8 3/8 inches)		S-Video (Y/C Separate, 4-pin S terminal)** EIA/NTSC Y: 1.0 Vp-p, sync negative, 75 Ω, unbalanced C: 0.286 Vp-p, 75 Ω, unbalanced
Picture size:	125.8 × 165.1 mm (5 × 6 1/2 inches) - NTSC Full Print Mode 124.8 × 165.1 mm (5 × 6 1/2 inches) - PAL Full Print Mode 132.1 × 176.1 mm (5 1/4 × 7 inches) - Digital Printing (with optional UPK-5502SC)		CCIR/PAL Y: 1.0 Vp-p, sync negative, 75 Ω, unbalanced C: 0.3 Vp-p, 75 Ω, unbalanced
Picture elements:	976 lines × 1920 dots - NTSC Full Print Mode 1176 lines × 1920 dots - PAL Full Print Mode 1536 lines × 2048 dots - Digital Printing (with optional UPK-5502SC and UPK-5500)	Interface:	Composite video (BNC) EIA/NTSC or CCIR/PAL 1.0 Vp-p, sync negative, 75 Ω, unbalanced** (with optional UPK-5502SC) SCSI 1 channel 50-pin amphenol (2)
Gradations:	256 levels process (Yellow, Magenta, Cyan) Over 16 million colors per pixel	Control terminal:	Remote control jack (Special mini) for optional RM-5500 Foot switch-1 (stereo mini) Foot switch-2 (D-sub 9-pin) for optional FS-30 RS-232C interface port (D-sub 25-pin)
Picture memory:	4 frame memories, 2048 × 1024 × 8 bits × 3 (6 MB) 8 frame memories with optional UPK-5500, 2048 × 2048 × 8 bits × 3 (12MB)	Power requirement:	AC 100 to 120 V, 50/60 Hz
Printing time:	Approx. 30s - NTSC Full Size Print Mode Approx. 34s - PAL Full Size Print Mode Approx. 38s - Digital printing with optional UPK-5502SC	Power consumption:	Max. 2.8 A
Input:	525 or 625 RGB analog* (BNC (4), R/G/B/Sync) RGB: 0.7 Vp-p, 75 Ω, unbalanced Sync: 0.3 to 4.0 Vp-p, sync negative, 75 Ω, unbalanced S-Video (Y/C Separate, 4-pin S terminal)** EIA/NTSC Y: 1.0 Vp-p, sync negative, 75 Ω, unbalanced C: 0.286 Vp-p, 75 Ω, unbalanced CCIR/PAL Y: 1.0 Vp-p, sync negative, 75 Ω, unbalanced C: 0.3 Vp-p, 75 Ω, unbalanced	Dimensions:	424(W) × 125(H) × 475(D)mm (16 3/4 × 5 × 18 3/4 inches)
		Mass:	14 kg (30 lb 14 oz)
		Safety regulations:	UL544, CSA C22.2 No.125
		Note:	*The UP-5600MD can accept sync-on-G or external sync automatically. ** EIA/NTSC or CCIR/PAL signals are selected using the input selector on the unit's rear panel.

## 2-2 Color video printers

### UP-5500

#### Color video printer

- High quality print with digital process in the frame memory in 8-bit/256 gradations and over 16 million colors per pixel
- A thermal head with 2048 elements assures high quality output with a resolution of 300 dots per inch
- Four frame memories (Eight frame memories are possible with optional UPK-5500 frame memory board)
- A5 size print (210 × 148 mm/8 3/8 × 5 7/8 inches) in approx. 30 seconds
- Easy-to-use menu operation with function menu display on the printer's LCD and on an associated monitor
- Worldwide use; accepts EIA/NTSC video, CCIR/PAL video (with optional UPK-5501NP), 525 analog RGB, and 625 analog RGB
- Multiple video inputs; analogue RGB, Y/C (S-video) and composite video
- Remote control operation from optional wired/wireless remote control units(RM-5500, RM-91) and foot switches (FS-20, FS-30)
- RS-232C port for external remote control from PCs
- Full color digital printing is possible using the optional SCSI interface board UPK- 5502SC which includes the A/D and D/A conversion function and printer driver software
- Multiple printing modes; 2, 4, 8 or 16 split print, 2, 4, 8 or 16 duplicate image print, composite print
- Up to 80 characters of caption setting
- The input image from a camera or a VTR can be displayed on an associated monitor looping through the UP-5500 in the power off mode
- User-friendly operational design

Supplied accessories:

- AC power cable
- Color print pack (for 20 prints)
- Paper tray
- Ink ribbon holder
- Operation manual

Optional accessories:

- Four frame memory board UPK-5500
- PAL memory board UPK-5501NP
- Digital interface board UPK-5502SC
- Wired/Wireless remote commander RM-5500
- Remote control unit RM-91
- Foot switch FS-30
- Foot switch FS-20
- Color printing pack 5UPC-5510 (ink ribbon holder not included)
- Color printing pack UPC-5510C
- Color printing pack UPC-5510 (ink ribbon holder not included)
- OHP transparency printing pack UPC-5530
- Additional ink ribbon holder UPA-5500

#### Specifications (with full optional boards)

Printing method:	Dye sublimation printing
Thermal head:	300 dpi
Printing paper size:	148 × 210 mm (5 7/8 × 8 3/8 inches)
Picture size:	125.8 × 165.1 mm (5 × 6 1/2 inches) - NTSC Full Print Mode
	124.8 × 165.1 mm (5 × 6 1/2 inches) - PAL Full Print Mode
	132.1 × 176.1 mm (5 1/4 × 7 inches) - Digital Printing Mode
Picture elements:	976 lines × 1920 dots - NTSC Full Print Mode
	1176 lines × 1920 dots - PAL Full Print Mode
	1536 lines × 2048 dots - Digital Printing (with optional UPK-5502SC)
Gradations:	256 levels process (Yellow, Magenta, Cyan)
	Over 16 million colors per pixel
Picture memory:	4 frame memories, 2048 × 1024 × 8 bits × 3
	8 frame memories, 2048 × 2048 × 8 bits × 3
Printing time:	Approx. 30s - NTSC Full Size Print Mode
	Approx. 34s - PAL Full Size Print Mode
	Approx. 38s - Digital Printing (with optional UPK-5502SC)
Input:	525 or 625 RGB analog* (BNC (4), R/G/B/Sync)
	RGB: 0.7 Vp-p, 75 Ω, unbalanced
	Sync: 0.3 to 4.0 Vp-p, sync negative, 75 Ω, unbalanced
	S-Video (Y/C Separate, 4-pin S terminal)**
	EIA/NTSC
	Y: 1.0 Vp-p, sync negative, 75 Ω, unbalanced
	C: 0.286 Vp-p, 75 Ω, unbalanced



Rear pannel with the optional UPK-5502SC

	CCIR/PAL
	Y: 1.0 Vp-p, sync negative, 75 Ω, unbalanced
	C: 0.3 Vp-p, 75 Ω, unbalanced
	Composite video (BNC)
	EIA/NTSC or CCIR/PAL, 1.0 Vp-p, sync negative, 75 Ω, unbalanced**
Output:	525 or 625 RGB analog* (BNC (4), R/G/B/Sync)
	RGB: 0.7 Vp-p, 75 Ω, unbalanced
	Sync: 1.1 Vp-p, sync negative, 75 Ω, unbalanced
	S-Video (Y/C Separate, 4-pin S terminal)**
	EIA/NTSC
	Y: 1.0 Vp-p, sync negative, 75 Ω, unbalanced
	C: 0.286 Vp-p, 75 Ω, unbalanced
	CCIR/PAL
	Y: 1.0 Vp-p, sync negative, 75 Ω, unbalanced
	C: 0.3 Vp-p, 75 Ω, unbalanced
	Composite video (BNC)
	EIA/NTSC or CCIR/PAL, 1.0 Vp-p, sync negative, 75 Ω, unbalanced**
Interface:	SCSI 1 channel (with optional UPK-5502SC)
	50-pin amphenol (2), unbalanced
Control terminal:	Remote control jack (Special mini) for optional RM-5500
	Foot switch-1 (stereo mini) for optional RM-91
	Foot switch-2 (D-sub 9-pin) for optional FS-30
	RS-232C interface port (D-sub 25-pin) for external computer
Power requirement:	AC 100 V to 120 V, 50/60 Hz
Power consumption:	250 W
Dimensions:	424(W) × 125(H) × 475(D) mm (16 3/4 × 5 × 18 3/4 inches)
Mass:	14 kg (30 lb 14 oz)
Safety regulations:	UL1950, CSA C22.2 No. 950

Note: \*The UP-5500 can accept sync-on-G or external sync automatically.

\*\*In order to accept CCIR/PAL signals, the optional UPK-5501NP is required.

EIA/NTSC or CCIR/PAL or signals are selected using input selector on the unit's rear panel.

# 2-2 Color video printers

## UP-2950MD/2900MD

### Color video printer

•UP-2900MD: one frame memory, UP-2950MD: four frame memories •High quality print with digital process in the frame memory in 8-bit/256 gradations and over 16 million colors per pixel •High resolution of 310dpi, 860(H) × 976(V) dots •Near A6 size print (130 × 88 mm/5 1/8 × 3 1/2 inches) in approx. 35 seconds •Multiple print modes: split image, duplicate image and Instant Pass Photo (IPP) Mode •Easy-to-use operation with function menu display on the built-in LCD or the associated monitor •Remote control function by an optional foot switch FS-36, remote control unit RM-91 or an external computer via an RS-232C interface •Multiple video input: analog RGB, Y/C and composite video •200 Sheets paper feed capacity •Up to 48 characters for caption setting •The input image from a camera or a VTR can be displayed on an associated monitor through the UP-2950MD/2900MD in the power off mode

Supplied accessories:	Color printing pack (for 10 prints) Paper tray (1) Paper cover (1) AC power cable Operation manual
Optional accessories:	Wired/wireless remote control Unit RM-5500 Remote control unit RM-91 Foot switch FS-36 Color printing pack UPC-2010 (for 200 prints) Black and white printing pack UPC-2020 (for 200 prints) Color postcard printing pack UPC-2070E (for 150 prints) Self-adhesive color printing pack UPC-20S01 (for 200 prints) 16-split self-adhesive pre-cut color printing pack UPC-20S16 (for 200 prints) 4-split self-adhesive pre-cut color printing Pack UPC-20S04 (for 200 prints) Paper ejector UPA-2001 Paper tray (for UPC-2040A and UPC-2070E) UPA-2002

### Specifications

Printing method:	Dye sublimation printing	Dimensions:	370(W) × 125(H) × 417(D) mm (14 5/8 × 5 × 16 1/2 inches)
Thermal head:	1024 elements (12.2 dots/mm)	Mass:	10.5 kg (23 lb 2 oz)
Gradation:	256 gradations for yellow, Magenta, Cyan Over 16.7 million colors per dot	Safety regulations:	UL 2601-1, CSA C22.2 No.601.1
Printing paper size:	130 × 88 mm (5 1/8 × 3 1/2 inches)		
Printed picture size:	Max. 110 × 80 mm (4 3/8 × 3 1/4 inches) (Self-laminating paper: Max. 135 × 70 mm (5 3/8 × 2 7/8 inches))		
Picture elements:	860 × 976 dots		
Picture memory:	UP-2950MD: Four frame memories UP-2900MD: One frame memory		
Printing time:	Approx. 35 seconds		
Inputs:	Y/C separate (4-pin S terminal) Y: 1.0 Vp-p, sync negative, 75 Ω, unbalanced C: 0.3 Vp-p, 75 Ω, unbalanced Composite video (BNC), EIA/NTSC 1.0 Vp-p sync negative, 75 Ω, unbalanced analog RGB (BNC (4)) RGB: 0.7 Vp-p, 75 Ω, unbalanced Sync: 0.2 to 4.0 Vp-p, negative, 75 Ω, unbalanced		
Outputs:	Y/C separate (4-pin S terminal) Y: 1.0 Vp-p, sync negative, 75 Ω, unbalanced C: 0.286 Vp-p, 75 Ω, unbalanced Composite video (BNC), EIA/NTSC 1.0 Vp-p sync negative, 75 Ω, unbalanced analog RGB (BNC (4)) RGB: 0.7 Vp-p, 75 Ω, unbalanced Sync: 1.0 Vp-p, negative, 75 Ω unbalanced		
Control terminals:	RS-232C (D-sub 25-pin) Remote 1 (Special mini) for optional remote control unit RM-5500 Remote 2 (Stereo mini) for optional remote control unit RM-91 or foot switch FS-36		
Power requirements:	120 V, 50/60 Hz		
Power consumption:	Max. 1.8 A		





## 2-2 Color video printers

### UP-2800

#### Color video printer

- High quality print with digital process in the frame memory in 8-bit/256 gradations and over 16 million colors per pixel
- High resolution of 310 dpi, 860(H) × 976(V) dots
- Near A6 size print (130 × 88 mm/5 1/8 × 3 1/2 inches) in approx. 35 seconds
- Multiple print modes: split image, duplicate image and Instant Pass Photo (IPP) Mode
- Easy-to-use operation with function menu display on the built-in LCD or the associated monitor
- Remote control function by an optional foot switch FS-20/36, remote control unit RM-91 or an external computer via an RS-232C interface
- Multiple video input: analog RGB, Y/C and composite video
- 200 Sheets paper feed capacity
- Up to 48 characters for caption setting
- The input image from a camera or a VTR can be displayed on an associated monitor through the UP-2800 in the power off mode

Supplied accessories:	Color printing pack (for 10 prints) Paper tray (1) Paper cover (1) AC power cable Operation manual
Optional accessories:	Wired/wireless remote control Unit RM-5500 Remote control unit RM-91 Foot switch FS-20/FS-36 Color printing pack UPC-2010 (for 200 prints) Black and white printing pack UPC-2020 (for 200 prints) Self-laminating color printing pack UPC-2040A (for 120 prints) Color postcard printing pack UPC-2070E (for 150 prints) Self-adhesive color printing pack UPC-20S01 (for 200 prints) 16-split self-adhesive pre-cut color printing pack UPC-20S16 (for 200 prints) 4-split self-adhesive pre-cut color printing Pack UPC-20S04 (for 200 prints) Paper ejector UPA-2001 Paper tray (for UPC-2040A and UPC-2070E) UPA-2002

#### Specifications

Printing method:	Dye sublimation printing
Thermal head:	1024 elements (12.2 dots/mm)
Gradation:	256 gradations for yellow, Magenta, Cyan Over 16.7 million colors per dot
Printing paper size:	130 × 88 mm (5 1/8 × 3 1/2 inches)
Printed picture size:	Max. 110 × 80 mm (4 3/8 × 3 1/4 inches) (Self-laminating paper: Max. 135 × 70 mm (5 3/8 × 2 7/8 inches))
Picture elements:	860 × 976 dots
Picture memory:	One frame memory
Printing time:	Approx. 35 seconds
Inputs:	Y/C separate (4-pin S terminal) Y: 1.0 Vp-p, sync negative, 75 Ω, unbalanced C: 0.286 Vp-p, 75 Ω, unbalanced Composite video (BNC), EIA/NTSC 1.0 Vp-p sync negative, 75 Ω, unbalanced Analog RGB (BNC (4)) RGB: 0.7 Vp-p, 75 Ω, unbalanced Sync: 0.2 to 4.0 Vp-p, negative, 75 Ω, unbalanced
Outputs:	Y/C separate (4-pin S terminal) Y: 1.0 Vp-p, sync negative, 75 Ω, unbalanced C: 0.286 Vp-p, 75 Ω, unbalanced Composite video (BNC), EIA/NTSC 1.0 Vp-p sync negative, 75 Ω, unbalanced Analog RGB (BNC (4)) RGB: 0.7 Vp-p, 75 Ω, unbalanced Sync: 1.0 Vp-p, negative, 75 Ω unbalanced
Control terminals:	RS-232C (D-sub 25-pin) Remote 1 (Special mini) for optional remote control unit RM-5500 Remote 2 (Stereo mini) for optional remote control unit RM-91 or foot switch FS-36



Power requirements:	120 V, 50/60 Hz
Power consumption:	Max. 1.8 A
Dimensions:	370 (W) × 125 (H) × 417 (D) mm (14 5/8 × 5 × 16 1/2 inches)
Mass:	10.5 kg (23 lb 2 oz)
Safety regulations:	UL1950, CSA C22.2 No.950

## 2-2 Color video printers

### UP-2300

#### Color video printer

- High quality print with digital process in the frame memory in 8-bit/256 gradations and over 16 million colors per pixel
- High resolution of 310dpi, 860(H) × 976(V) dots
- Near A6 size print (130 × 88 mm/5 1/8 × 3 1/2 inches) in approx. 35 seconds
- Multiple print modes: split image, duplicate image and Instant Pass Photo (IPP) Mode
- Easy-to-use operation with function menu display on an associated monitor
- Remote control function by an optional foot switch FS-36, remote control unit RM-91 or an external computer via an RS-232C interface
- Y/C and composite video input available
- 200 Sheets paper feed capacity
- Up to 48 characters for caption setting
- The input image from a camera or a VTR can be displayed on an associated monitor through the UP-2300 in the power off mode

Supplied accessories:	Color printing pack (for 10 prints) Paper tray (1) Paper cover (1) AC power cable Operation manual
Optional accessories:	Wired/wireless remote control Unit RM-5500 Remote control unit RM-91 Foot switch FS-36 Color printing pack UPC-2010 (for 200 prints) (UP-2300P only) Black and white printing pack UPC-2020 (for 200 prints) Self-laminating color printing pack UPC-2040A (for 120 prints) Color postcard printing pack UPC-2070E (for 150 prints) Self-adhesive color printing pack UPC-20S01 (for 200 prints) 16-split self-adhesive pre-cut color printing pack UPC-20S16 (for 200 prints) 4-split self-adhesive pre-cut color printing Pack UPC-20S04 (for 200 prints) Paper ejector UPA-2001 Paper tray (for UPC-2040A and UPC-2070E) UPA-2002

#### Specifications

Printing method:	Dye sublimation printing
Thermal head:	1024 elements (12.2 dots/mm)
Gradation:	256 gradations for yellow, Magenta, Cyan Over 16.7 million colors per dot
Printing paper size:	130 × 88 mm (5 1/8 × 3 1/2 inches)
Printed picture size:	Max. 110 × 80 mm (4 3/8 × 3 1/4 inches) (Self-laminating paper: Max. 135 × 70 mm (5 3/8 × 2 7/8 inches))
Picture elements:	860 × 976 dots
Picture memory:	One frame memory
Printing time:	Approx. 35 seconds (70 seconds when using UPC-2040A)
Inputs:	Y/C separate (4-pin S terminal) Y: 1.0 Vp-p, sync negative, 75 Ω, unbalanced C: 0.286 Vp-p, 75 Ω, unbalanced Composite video (BNC), EIA/NTSC 1.0 Vp-p sync negative, 75 Ω, unbalanced
Outputs:	Y/C separate (4-pin S terminal) Y: 1.0 Vp-p, sync negative, 75 Ω, unbalanced C: 0.286 Vp-p, 75 Ω, unbalanced Composite video (BNC), EIA/NTSC 1.0 Vp-p sync negative, 75 Ω, unbalanced
Control terminals:	RS-232C (D-sub 25-pin) Remote 1 (Special mini) for optional remote control unit RM-5500 Remote 2 (Stereo mini) for optional remote control unit RM-91 or foot switch FS-36
Power requirements:	120 V, 50/60 Hz
Power consumption:	Max. 1.8 A
Dimensions:	370(W) × 125(H) × 417(D) mm (14 5/8 × 5 × 16 1/2 inches)
Mass:	10 kg (22 lb 1 oz)
Safety regulations:	UL1950, CSA C22.2 No.950



## 2-2 Color video printers

### UP-2100

#### Color video printer

- High quality print with digital process in the frame memory in 8-bit/256 gradations and over 16 million colors per pixel
- High resolution of 150 dpi, 720(H) × 468(V) dots
- Near A6 size print (130 × 88 mm/5 1/8 × 3 1/2 inches) in approx. 60 seconds
- Easy-to-use operation with function menu display on an associated monitor
- Remote control function by an optional foot switch FS-36, remote control unit RM-91
- Y/C and composite video input available
- 200 sheets paper feed capacity
- Up to 48 characters for caption setting
- The input image from a camera or a VTR can be displayed on an associated monitor through the UP-2100 in the power off mode

Supplied accessories:	Color printing pack (For 10 Prints)
	Paper tray (1)
	Print tray (1)
	AC power cable
	Operation manual
Optional accessories:	Wired/wireless remote control unit RM-5500
	Remote control unit RM-91
	Foot switch FS-36
	Color printing pack UPC-2010 (for 200 prints)

#### Specifications

Printing method:	Dye sublimation printing
Thermal head:	512 elements (6.1 dots/mm)
Gradation:	256 gradations for yellow, Magenta, Cyan Over 16.7 million colors per dot
Printing paper size:	130 × 88 mm (5 1/8 × 3 1/2 inches)
Printed picture size:	Max. 110 × 80 mm (4 3/8 × 3 1/4 inches)
Picture elements:	720 × 564 dots
Picture memory:	One frame memory
Printing time:	Approx. 60 seconds
Inputs:	Y/C separate (4-pin S terminal)
	Y: 1.0 Vp-p, sync negative, 75 Ω, unbalanced
	C: 0.3 Vp-p, 75 Ω, unbalanced
	Composite video (BNC), EIA/NTSC 1.0 Vp-p sync negative, 75 Ω, unbalanced
	Y/C separate (4-pin S terminal)
Outputs:	Y: 1.0 Vp-p, sync negative, 75 Ω unbalanced
	C: 0.3 Vp-p, 75 Ω, unbalanced
	Composite video (BNC), EIA/NTSC 1.0 Vp-p sync negative, 75 Ω, unbalanced
	Remote 1 (Special mini) for optional remote control unit RM-5500
	Remote 2 (Stereo mini) for optional remote control unit RM-91 or foot switch FS-36
Control terminals:	
Power requirements:	120 V, 50/60 Hz
Power consumption:	Max. 1.5 A
Dimensions:	370(W) × 125(H) × 417(D) mm (14 5/8 × 5 × 16 1/2 inches)
Mass:	9 kg (19 lb 13 oz)
Safety regulations:	UL1950, CSA C22.2 No.950



## 2-3 Monochrome video graphic printers

### UP-980 (EIA/CCIR)

#### Monochrome video graphic printer

- Thermal video graphic printer with 256 steps of gray level
- Large print size (EIA standard: 188x 249 mm at side direction print mode, 187x 130 mm at normal direction print mode)
- High speed printing of 10 seconds
- Multiple print modes; Standard, Side and 2, 4, 6 split (different images) print
- Accepts both 15.75 kHz and 31.5 kHz composite video signals
- Blue transparency prints with optional UPT-210BL
- Auto paper cut function
- Medical safety regulation (UL 2601-1 approved)

Supplied accessories:	Paper Roll (UPP-210HD) (1)
	Head Cleaning Sheet (1)
Optional accessories:	AC Power Cable (1)
	BNC Cable (1)
	Operation Manual (1)
	RM-91 Remote Control Unit
	FS-20 Foot Switch
	UPP-210HD High Density Printing Paper
	UPP-210SE High Quality Printing Paper
	UPT-210BL Blue Transparent Film

#### Specifications

Printing method:	Direct thermal printing	
Thermal head:	1280 elements	
Gradation:	256 gray levels	
Printing paper size:	Paper width of 210 mm	
Printed picture size:	EIA	CCIR
Standard mode:	187 × 140 mm	187 × 138 mm (W/H)
	(7 3/8 × 5 5/8 inches)	(7 3/8 × 5 1/2 inches)
Side mode:	188 × 249 mm	186 × 249 mm (W/H)
	(7 1/2 × 9 7/8 inches)	(7 3/8 × 9 7/8 inches)
Picture memory:	2048 × 2048 × 8-bit	
Printing time:	EIA: Approx. 10 seconds	
	CCIR: Approx. 12 seconds	
Inputs:	EIA or CCIR composite video (BNC), 1.0 Vp-p	
Outputs:	75 Ω /high impedance	
	EIA or CCIR composite video (BNC), 1.0 Vp-p	
Control terminals:	75 Ω /high impedance	
	Remote (Stereo mini)	
Power requirements:	for optional RM-91 Remote Control Unit	
	or FS-20 Foot Switch	
Power consumption:	120 V, 220 to 240 V, 50/60 Hz	
Dimensions:	120 V: 2.4 A	
	220 to 240 V: 1.3 A	
Mass:	316 (W) × 132 (H) × 305 (D) mm	
	(12 1/2 × 5 1/4 × 12 1/8 inches)	
Safety regulations:	8 kg (17 lb 10 oz)	
	UL-1950, CSA C22.2 No. 950 and UL-2601-1,	
	CSA C22.2 No. 601.1	



## 2-3 Monochrome video graphic printers

### UP-960 (EIA/CCIR)

#### Monochrome video graphic printer

- Thermal video graphic printer with 256 steps of gray level
- Large print size (EIA standard: 184x 243 mm at side direction print mode, 190x 144 mm at normal direction print mode)
- High speed printing of 10 seconds
- Multiple print modes; Standard, Side and 2 split (different images) print
- Accepts worldwide video signals for both EIA and CCIR
- Medical safety regulation (UL 2601-1 approved)

Supplied accessories: Paper Roll (UPP-210HD) (1)  
Head Cleaning Sheet (1)  
AC Power Cable (1)  
BNC Cable (1)  
Operation Manual (1)

Optional accessories: RM-91 Remote Control Unit  
FS-20 Foot Switch  
UPP-210HD High Density Printing Paper  
UPP-210SE High Quality Printing Paper  
UPT-210BL Blue Transparent Film

#### Specifications

Printing method:	Direct thermal printing	
Thermal head:	1280 elements	
Gradation:	256 gray levels	
Printing paper size:	Paper width of 210 mm	
Printed picture size:	EIA	CCIR
Standard mode:	190 × 144 mm	190 × 142 mm (W/H)
	(7 1/2 × 5 3/4 inches)	(7 1/2 × 5 5/8 inches)
Side mode:	184 × 243 mm	181 × 243 mm (W/H)
	(7 1/4 × 9 5/8 inches)	(7 1/4 × 9 5/8 inches)
Picture memory:	2048 × 1024 × 8-bit	
Printing time:	EIA: Approx. 10 seconds	
	CCIR: Approx. 12 seconds	
Inputs:	EIA or CCIR composite video (BNC), 1.0 Vp-p 75 W /high impedance	
Outputs:	EIA or CCIR composite video (BNC), 1.0 Vp-p 75 W /high impedance	
Control terminals:	Remote (Stereo mini)	
	for optional RM-91 Remote Control Unit or FS-20 Foot Switch	
Power requirements:	120 V, 220 to 240 V, 50/60 Hz	
Power consumption:	120 V: 2.4 A	
	220 to 240 V: 1.3 A	
Dimensions:	316 (W) × 132 (H) × 305 (D) mm	
	(12 1/2 × 5 1/4 × 12 1/8 inches)	
Mass:	8 kg (17 lb 10 oz)	
Safety regulations:	UL-1950, CSA C22.2 No. 950 and UL-2601-1, CSA C22.2 No. 601.1	



## 2-3 Monochrome video graphic printers

### UP-895MD (EIA/CCIR)

#### Monochrome video graphic printer

- High-resolution 1280 dots x 608 lines printing (in WIDE 2 scan mode) and 256 steps of grey level
- 12.8 dpm or 325 dpi print resolution
- High quality, glossy, near photographic printing with newly developed printing paper, UPP-110HG
- The smoothing feature provides smoother, clearer image output
- Automatic selection of EIA/CCIR video signal
- Worldwide power supply for AC 100 to 120 / 220 to 240 V
- Automatic paper load system for simple operation
- Multiple copies (up to a maximum of ten)
- Audible alarm when printer needs paper or the video signal is absent
- Compact and lightweight
- Fast printing of approximately 3.9 seconds per screen (with smoothing feature turned off and printer set to STANDARD print mode)
- Thermal head protection
- Wide scanning function (NORMAL/WIDE 1/WIDE 2)
- 2x zoom for either half of picture in either STANDARD or SIDE mode
- Selectable 4:3/1:1 aspect ratio
- Approx. 201 prints\* out of UPP-110HG(18 m)\*\*

\*Approx. 193 prints when each image cut out

\*\*In default setting

Supplied accessories:	AC power cable
	BNC cable (1.5m)
Consumables:	Printing paper, roll (UPP-110HG)
	Head-cleaning sheet
	Operation manual
	High Quality Printing Paper UPP-110S (110 mm x 20 m)
	High Density Printing Paper UPP-110HD (110 mm x 20 m)
Optional accessory:	High Glossy Printing Paper UPP-110HG (110 mm x 18 m)
	Remote Control Unit RM-91

#### Specifications

Thermal Head:	Thin film thermal head, 1280 dots
Gradations:	256 steps of grey level (quasi)
Printed Picture Size:	STANDARD print mode, at 4:3 aspect ratio (EIA) NORMAL: 90 x 69 mm (3 5/8 x 2 3/4 inches) WIDE 1: 94 x 72 mm (3 3/4 x 2 7/8 inches) WIDE 2: 100 x 74 mm (4 x 3 inches) (CCIR) NORMAL: 90 x 68 mm (3 5/8 x 2 3/4 inches) WIDE 1: 94 x 71 mm (3 3/4 x 2 7/8 inches) WIDE 2: 100 x 74 mm (4 x 3 inches)
Effective pixels:	STANDARD print mode, at 4:3 aspect ratio (EIA) NORMAL: 1150 dots x 472 lines WIDE 1: 1210 dots x 490 lines WIDE 2: 1280 dots x 508 lines (CCIR) NORMAL: 1150 dots x 560 lines WIDE 1: 1210 dots x 582 lines WIDE 2: 1280 dots x 608 lines
Printing speed:	Approx. 3.9 seconds/screen (STANDARD print mode, smoothing off) Approx. 6.8 seconds/screen (SIDE print mode, smoothing off) Approx. 7.8 seconds/screen (STANDARD print mode, smoothing on)
Picture memory:	8-bit frame memory
Input/Output:	VIDEO IN: BNC, EIA or CCIR composite video signal, 1.0 Vp-p, 75 Ω/high impedance selectable VIDEO OUT: BNC, Loop through or E to E selectable
Remote:	Stereo mini jack for an optional Remote Control Unit RM-91
Power requirements:	AC 100 to 120 / 220 to 240 V, 50/60 Hz
Power consumption:	Max. 120 W
Dimensions:	Approx. 154 (W) x 105 (H) x 260 (D) mm (6 1/8 x 4 1/4 x 10 1/4 inches)
Mass:	3.4 kg (7 lb 8 oz)
Safety regulations:	UL-2601-1, CSA No.22.2, No.601.1



## 2-3 Monochrome video graphic printers

### UP-895 (EIA/CCIR)

#### Monochrome video graphic printer

- High-resolution 1280 dots x 608 lines printing (in WIDE 2 scan mode) and 256 steps of grey level •12.8 dpm or 325 dpi print resolution •High quality, glossy, near photographic printing with newly developed printing paper, UPP-110HG
- The smoothing feature provides smoother, clearer image output •Automatic selection of EIA/CCIR video signal
- Worldwide power supply for AC 100 to 120 / 220 to 240 V
- Automatic paper load system for simple operation •Multiple copies (up to a maximum of ten) •Audible alarm when printer needs paper or the video signal is absent •Compact and lightweight •Fast printing of approximately 3.9 seconds per screen (with smoothing feature turned off and printer set to STANDARD print mode) •Thermal head protection •Wide scanning function (NORMAL/WIDE 1/WIDE 2) •2x zoom for either half of picture in either STANDARD or SIDE mode
- Selectable 4:3/1:1 aspect ratio •Approx. 201 prints\* out of UPP-110HG(18 m)\*\*

\*Approx. 193 prints when each image cut out

\*\*In default setting

Supplied accessories:	AC power cable
	BNC cable (1.5m)
Consumables:	Printing paper, roll (UPP-110HG)
	Head-cleaning sheet
Optional accessory:	Operation manual
	Remote Control Unit RM-91

#### Specifications

Thermal Head:	Thin film thermal head, 1280 dots
Gradations:	256 steps of grey level (quasi)
Printed Picture Size:	STANDARD print mode, at 4:3 aspect ratio (EIA) NORMAL: 90 × 69 mm (3 5/8 × 2 3/4 inches) WIDE 1: 94 × 72 mm (3 3/4 × 2 7/8 inches) WIDE 2: 100 × 74 mm (4 × 3 inches) (CCIR) NORMAL: 90 × 68 mm (3 5/8 × 2 3/4 inches) WIDE 1: 94 × 71 mm (3 3/4 × 2 7/8 inches) WIDE 2: 100 × 74 mm (4 × 3 inches)
Effective pixels:	STANDARD print mode, at 4:3 aspect ratio (EIA) NORMAL: 1150 dots × 472 lines WIDE 1: 1210 dots × 490 lines WIDE 2: 1280 dots × 508 lines (CCIR) NORMAL: 1150 dots × 560 lines WIDE 1: 1210 dots × 582 lines WIDE 2: 1280 dots × 608 lines
Printing speed:	Approx. 3.9 seconds/screen (STANDARD print mode, smoothing off) Approx. 6.8 seconds/screen (SIDE print mode, smoothing off) Approx. 7.8 seconds/screen (STANDARD print mode, smoothing on)
Picture memory:	8-bit frame memory
Input/Output:	VIDEO IN: BNC, EIA or CCIR composite video signal, 1.0 Vp-p, 75 Ω/high impedance selectable VIDEO OUT: BNC, Loop through or E to E selectable
Remote:	Stereo mini jack for an optional Remote Control Unit RM-91
Power requirements:	AC 100 to 120 / 220 to 240 V, 50/60 Hz
Power consumption:	Max. 120 W
Dimensions:	Approx. 154 (W) × 105 (H) × 260 (D) mm (6 1/8 × 4 1/4 × 10 1/4 inches)
Mass:	3.4 kg (7 lb 8 oz)
Safety regulations:	UL1950, CSA No.22.2, No.601.1



## 2-4 Printer accessories

### Print Media at a Glance

Size	Description	Model	Print sheets/pack	UP-D70XR	UP-D70A	UP-D8800*	UP-7300MD/7200
Letter	Blue Transparency Film	UPT-731BL	100	0			
	Color Print Pack	UPC-8811	100	0	0	0	
	Color Print Pack	UPC-7011	100				0
	B&W Print Pack	UPC-8821	100	0	0	0	
	B&W Print Pack	UPC-7021*/7021A	100				0
	Self-Laminating Color Print Pack	UPC-741	72	0	0		
	OHP Transparency Print Pack	UPC- 8831*	100			0	
	OHP Transparency Print Pack	UPC- 7031	100				0
	Self-Laminating Color Print Pack	UPC-8841*/8841A	70		0	0	
	Letter+	Color Print Pack	UPC-8817	100	0	0	0
	Self-Laminating Color Print Pack	UPC-747	72		0		
	Description	Model	Print sheets/pack	UP-D5500	UP-5600MD/5500		
A5	Color Print Pack	UPC-5510	200	0	0		
	Color Print Pack	5UPC-5510	5 packs x 200	0	0		
	Ink Ribbon Holder for UPC-UPC-5510/5UPC-5510	UPA-5500		0	0		
	Color Print Pack	UPC-5510C	200	0	0		
	OHP Transparency Print Pack	UPC-5530*	100		0		
	Description	Model	Print sheets/pack	UP-2950MD/2900MD/2800	UP-2300	UP-2100	
A6	Color Print Pack	UPC-2010	200	0	0	0	
	B&W Print Pack	UPC-2020	200	0	0		
	Self-Adhesive Stickers Print Pack	UPC-20S01**	200	0	0		
	4-Split Self-Adhesive Stickers Print Pack	UPC-20S04**	200	0	0		
	16-Split Self-Adhesive Stickers Print Pack	UPC-20S16	200	0	0		
	Self-Laminating Color Print Pack	UPC-2040A**	120	0	0		
	Color Postcard Print Pack	UPC-2070E	150	0	0		
	Description	Model	Print sheets/pack	UPX-C21/UP-D2600S/D2600	UP-D2500	UP-DP10	
A6 (Digital)	Color Print Pack	UPC-2010	200	0	0		
	B&W Print Pack	UPC-2020	200	0	0		
	Self-Adhesive Stickers Print Pack	UPC-20S01**	200	0	0		
	4-Split Self-Adhesive Stickers Print Pack	UPC-20S04**	200	0	0		
	16-Split Self-Adhesive Stickers Print Pack	UPC-20S16	200	0	0		
	Self-Laminating Color Print Pack	UPC-2040A**	120	0	0		
	Self-Laminating Color Print Pack	UPC-2045	120	0			
	Color Postcard Print Pack	UPC-2070E	150	0	0		
	Self-Laminating Color Print Pack	UPC-10P23E	25				0
	Self-Laminating Color Print Pack	UPC-10P34	25				0
	Self-Laminating Sticker Print Pack	UPC-10S01	25				0
ID Card	Description	Model	Print sheets/pack	UP-D6500/D6400/D6300	UP-D6600*		
	Color Ink Ribbon (CMYL)	SUPR-6040	5 packs x 250	0	0		
	Color Ink Ribbon (CMYKL)	SUPR-6080	5 packs x 200	0	0		
	Black and White Ribbon (K)	UPR-6025	approx. for 1000 prints	0	0		
	Description	Model	Paper length/roll	UP-980	UP-960	UP-930*/910*	
A4	Blue Transpacency Film	UPT-210BL	12.5 m	0			
Width	High Density Print Paper	UPP-210HD	25 m	0	0	0	
	High Quality Print Paper	UPP-210SE	25 m	0	0	0	
	High Density Print Paper	UPP-216HD	25 m			0	
	High Quality Print Paper	UPP-216SE	25 m			0	
	Description	Model	Paper length/roll	UP-895MD/895	UP-890MD*/880*	UP-860*/D860*	
A6	High Glossy Print Paper	UPP-110HG	18 m	0			
Width	Superior Density Print Paper	UPP-110HA	18 m		0		
	High Density Print Paper	UPP-110HD	20 m	0	0	0	
	High Quality Print Paper	UPP-110S	20 m	0	0	0	

### Print Media at a Glance (for discontinued printers)

Size	Description	Model	Print sheets/pack	UP-5000 series*	
A5	Color Print Pack	UPC-5010A	100	0	
	Color Print Pack	UPC-5010P	100	0	
	Color Print Pack	10UPC-5010S	10 packs x 100	0	
	Ink Ribbon Holder for 10UPC-5010S	UPA-5000		0	
	B&W Print Pack	UPC-5020A	100	0	
	OHP Transparency Print Pack	UPC-5030	50	0	
	Description	Model	Print sheets/pack	UP-1000 series*	UP-3000 series*
A6	Color Print Pack	UPC-1010	100	0	
	Color Print Pack	20UPC-1010	20 packs x 100	0	
	Color Print Pack	UPC-3010	80		0
	B&W Print Pack	UPC-1020	100	0	
	B&W Print Pack	UPC-3020	80		0
	4-Split Self-Adhesive Stickers Print Pack	UPC-S04**	100	0	
	16-Split Self-Adhesive Stickers Print Pack	UPC-S16**	100	0	
	16-Split Self-Adhesive Stickers Print Pack	20UPC-S16**	20 packs x 100	0	
	Self-Laminating Color Print Pack	5UPC-1040*	5 packs x 75	0	
	Self-Laminating Color Print Pack	5UPC-1040A**	5 packs x 75	0 (1200IVP/1200EPM only)	
	Self-Laminating Color Print Pack	5UPC-3040	5 packs x 60		0 (3000EP only)
	Color Postcard Paper	20UPP-1070	20 packs x 75	0	
	Color Postcard Cartridge	20UPR-1070	for 1500 prints	0	

### Foot Switch/Remote Commander at a Glance

Type	Description	Model	UP-7300MD/7200	UP-5600MD/5500	UP-2950MD/2900MD/2800/2300/2100	UP-980/960/895MD/895
Foot Switch	Multiple Function Foot Switch	FS-30		0		
	Simple Foot Switch	FS-36			0	
Remote Commander	Simple Remote Commander	RM-91	0	0	0	0
	Multiple Function Remote Commander	RM-5500		0	0	

\* Production of these products has been discontinued. This information has been included to assist customers who are still using this media.

\*\* For details, please consult your nearest Sony office.



## 2-4 Printer accessories

### UPA-6002

#### Auto Card Stacker

•Auto card stacker for UP-D6500/D6400/D6300 high volume applications •Stores up to approx. 125\*<sup>1</sup> (UP-D6500: 250\*<sup>2</sup>) cards after production

Dimensions: 138 (W) × 175 (H) × 257 (D) mm  
(5 1/2 × 7 × 10 1/8 inches)

\*<sup>1</sup> In case of the card thickness is 0.76 mm.

\*<sup>2</sup> In case of the card thickness is 0.76 mm and combining with two of UPA-6003 Auto Card Feeder.



### UPA-6003

#### Auto Card Feeder

•Auto card feeder for UP-D6500/D6400/D6300 high volume applications •Holds up to approx. 125\*<sup>1</sup> (UP-D6500: 250\*<sup>2</sup>) cards ready for printing and laminating

Dimensions: 138 (W) × 175 (H) × 257 (D) mm  
(5 1/2 × 7 × 10 1/8 inches)

\*<sup>1</sup> In case of the card thickness is 0.76 mm.

\*<sup>2</sup> In case of the card thickness is 0.76 mm an using two of UPA-6003 Auto Card Feeder.

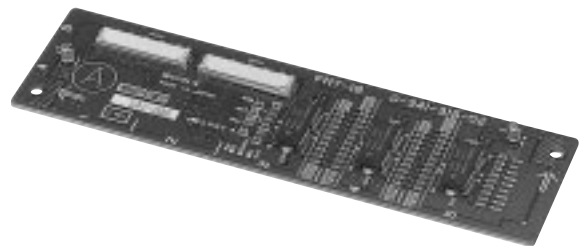


STILL IMAGE  
PRODUCTS

### UPK-5500

#### Four Frame Memory Board

•Additional four frame memories for the UP-5600MD/5500 •With this board, the internal frame memory of the UP-5600MD/5500 can be expanded to eight frame memories



### UPK-5501NP

#### PAL memory board

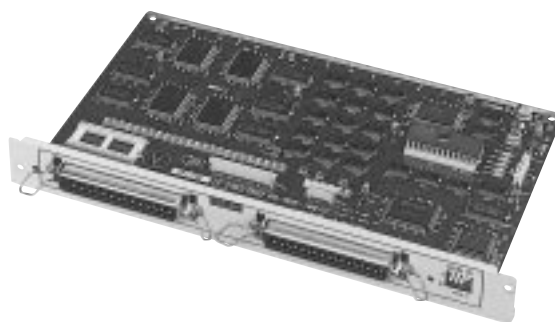
•Additional memory board for the UP-5600MD/5500 •With this optional memory board, the UP-5500 can accept and print CCIR/PAL video system and 625 analog RGB signals

## 2-4 Printer accessories

### UPK-5502SC

#### Digital Interface Board

•SCSI interface kit for the UP-5600MD/5500 •Provides A/D and D/A conversion function •Includes SCSI interface board and printer driver software which covers PhotoShop® plug-in modules both for Apple® Macintosh® and Microsoft Windows™ machines



### RM-5500

#### Wired/Wireless Remote Commander

•Wired or wireless remote controls over multiple functions of the UP-5600MD/5500/2950MD/2900MD/2800/2300/2100

Supplied accessory: Remote cable (5m)  
Operation manual

Power requirement: DC 3 V  
Dimensions: 62(W) × 20(H) × 175(L) mm  
(2½ × 27/32 × 7 inches)

Mass: 100 g (0.2 lb)



### RM-91

#### Remote Control Unit

•To record or print an image on a still video recorder or a video printer

Connector: Stereo mini  
Cable length: 5 m



### FS-30

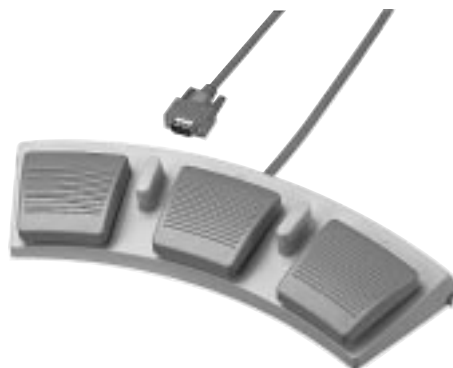
#### Foot Switch

•Multiple function controls over the UP-5600MD/5500 connected through the D-Sub 9-pin remote interface.

Supplied accessory: Operation manual

Terminal: D-sub 5-pin  
Dimensions: 337.3(W) × 46.1(H) × 128.0(D) mm  
(13⅜ × 1⅞ × 5⅛ inches)

Mass: 1.0 kg (2 lb 3 oz)



## 2-4 Printer accessories

### FS-36

#### Foot Switch

- Foot switch for UP-2950MD/2900MD/2800/2300/2100

Terminal: Stereo mini  
Cable length: 5 m  
Dimensions: 175(W) × 53(H) × 105(D) mm  
(7 × 2 1/8 × 4 1/4 inches)



### UPT-731BL

#### Blue Thermal Transparent Film

- Letter-size blue thermal transparent film for UP-D70XR

Contents: 100 sheets of print film  
Paper size: 279 × 216 mm (11 × 8 5/8 inches)



STILL IMAGE  
PRODUCTS

### UPC-8811

#### Letter Size Color Print Pack

- Color print pack for the UP-D70A/D70XR

Contents: A roll of YMC Ink Ribbon  
100 sheets of Print Paper  
Paper size: 216 × 279 mm (8 5/8 × 11 inches)



### UPC-8817

#### Letter Plus size Color Printing Pack

- Color print pack for UP-D70A/D70XR

Contents: 100 sheets of print paper  
1 roll of ink ribbon  
Paper size: 222 × 322.4 mm (8 3/4 × 12 3/4 inches)

## 2-4 Printer accessories

### UPC-8821

#### Letter Size B&W Print Pack

•Monochrome print pack for the UP-D70A/D70XR

Contents: A roll of B&W Ink Ribbon  
100 sheets of Print Paper  
Paper size: 216 × 279 mm (8 5/8 × 11 inches)

### UPC-741 (8841)

#### Letter Size Self-Laminating Color Printing Pack

•Self-Laminating print pack for the UP-D70A/D70XR

Contents: A roll of YMCL Ink Ribbon  
72 (70) Transparencies  
Paper size: 216 × 279 mm (8 5/8 × 11 inches)



### UPC-747

#### Letter Plus size Self-Laminating Colour Printing Pack

•Self-Laminating print pack for the UP-D70A

Contents: 72 sheets of print paper  
A roll of YMCL Ink Ribbon  
Paper size: 222 × 322.4 mm (8 3/4 × 12 3/4 inches)



### UPC-7011

#### Color printing pack

•Color print pack for UP-7300MD/7200

Contents: 100 sheets of print paper  
1 roll of ink ribbon for 100 print  
Paper size: 216 × 279 mm (8 5/8 × 11 inches)



## 2-4 Printer accessories

### UPC-7021

#### Black and white printing pack

•Monochrome print pack for UP-7300MD/7200

Contents: 100 sheets of print paper  
1 roll of ink ribbon for 100 print  
Paper size: 216 × 279 mm (8 5/8 × 11 inches)



### UPC-7031

#### OHP printing pack

•Color OHP transparency print pack for UP-7300MD/7200

Contents: 100 transparencies  
1 roll of ink ribbon for 100 print  
Paper size: 216 × 279 mm (8 5/8 × 11 inches)



STILL-IMAGE  
PRODUCTS

### UPC-5510\*

#### A5-size Color Printing Pack

•Color print pack for the UP-D5500/5600MD/5500

Contents: 200 sheets of print paper  
1 roll of ink ribbon  
Paper size: 148 × 210 mm (5 7/8 × 8 3/8 inches)

\*Ink ribbon holder is not included.

### 5UPC-5510\*

#### A5-size Color Printing Pack

•Color print pack for UP-D5500/5600MD/5500

Contents: 5 packs of 200 sheets of print paper  
5 rolls of ink ribbon  
Paper size: 148 × 210 mm (5 7/8 × 8 3/8 inches)

\*Ink ribbon holder is not included.



### UPC-5510C

#### A5-size Color Printing Pack

•Color print pack for UP-D5500/5600MD/5500

Contents: 200 sheets of print paper  
1 ink ribbon with disposable cartridge  
Paper size: 148 × 210 mm (5 7/8 × 8 3/8 inches)

## 2-4 Printer accessories

### UPA-5500

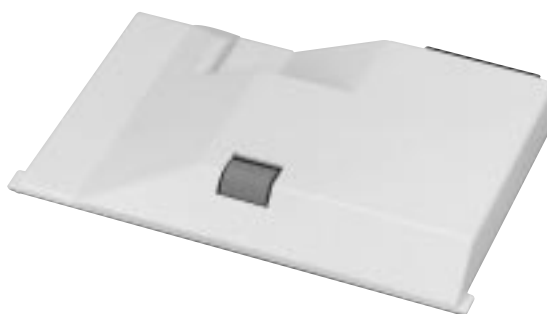
#### Ink Ribbon Holder

- Ink ribbon holder for UPC-5510 and 5UPC-5510

### UPA-2001

#### Paper Ejector

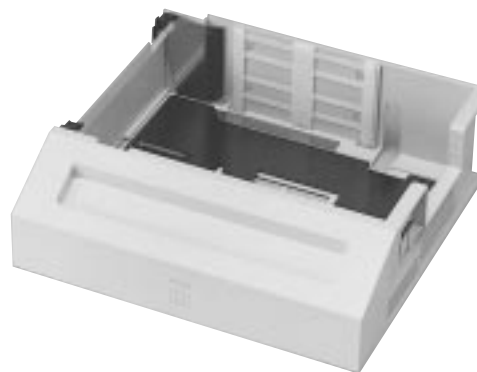
- Paper ejector for the UP-2000 series



### UPA-2002

#### Paper Tray

- Paper tray for UPC-2045, UPC-2040A and UPC-2070E



### UPA-2003

#### Roller Cleaning Kit

- Roller cleaning kit for the UP-2000 series

Contents:

- Cleaning liquid (1)
- Cleaning sheet for normal tray (1)
- Cleaning sheet for UPA-2002 (optional large size tray) (1)



# 2-4 Printer accessories

## UPC-10P23E

**Self-laminating Color Printing Pack for UP-DP10**  
(for image file with aspect ratio of 2:3)

Contents:	25 sheets of print paper 1 roll of ink ribbon
Paper size:	180 × 100 mm (7 1/8 × 4 inches)
Print size:	152 × 100 mm (6 × 4 inches)*

\* After tearing off border tabs.

## UPC-10P34

**Self-laminating Color Printing Pack for UP-DP10**  
(for image file with aspect ratio of 3:4)

Contents:	25 sheets of print paper 1 roll of ink ribbon
Paper size:	180 × 100 mm (7 1/8 × 4 inches)
Print size:	134 × 100 mm (5 3/8 × 4 inches)*

\* After tearing off border tabs.

## UPC-10S01

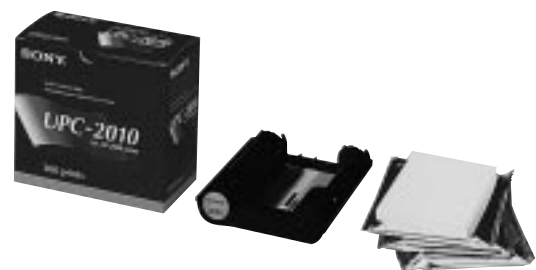
**Self-laminating Sticker Printing Pack for UP-DP10**  
(for image file with aspect ratio of 3:4)

Contents:	25 sheets of print paper 1 roll of ink ribbon
Paper size:	180 × 100 mm (7 1/8 × 4 inches)

## UPC-2010

**A6-size Color Printing Pack**  
•Color print pack for UPX-C21, UP-2000 series

Contents:	200 sheets of print paper 1 roll of ink ribbon
Paper size:	130 × 88 mm (5 1/8 × 3 1/2 inches)



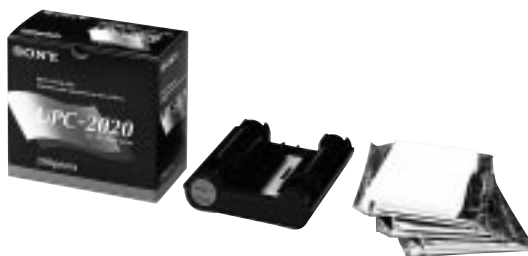
## 2-4 Printer accessories

### UPC-2020

#### A6-size Black and White Printing Pack

•Monochrome print pack for UPX-C21, UP-2000 series

Contents: 200 sheets of print paper  
1 roll of ink ribbon  
Paper size: 130 × 88 mm (5 1/8 × 3 1/2 inches)



### UPC-20S01

#### A6-size Self-Adhesive Stickers Printing Pack

•Printing pack for UPX-C21, UP-2000 series

Contents: 200 sheets of print paper  
1 cartridge of ink ribbon  
Paper size: 130 × 88 mm (5 1/8 × 3 1/2 inches)

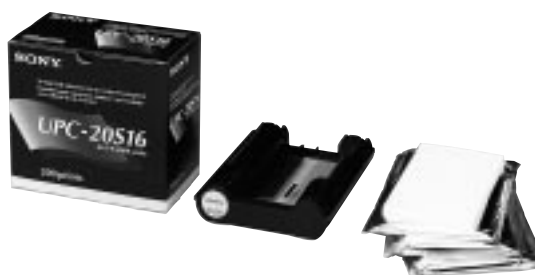


### UPC-20S16

#### A6-size 16-Split Self-Adhesive Stickers Printing Pack

•Printing pack for UPX-C21, UP-2000 series

Contents: 200 sheets of print paper  
1 cartridge of ink ribbon  
Paper size: 130 × 88 mm (5 1/8 × 3 1/2 inches)



### UPC-20S04

#### A6-size 4-Split Self-Adhesive Stickers Printing Pack

•Printing pack for UPX-C21, UP-2000 series

Contents: 200 sheets of print paper  
1 cartridges of ink ribbon  
Paper size: 130 × 88 mm (5 1/8 × 3 1/2 inches)





## 2-4 Printer accessories

### UPC-2040A

#### A6-size Self-laminating Color Printing Pack

- Self-laminating color print pack for UPX-C21, UP-D2600S/D2600/D2500/2300

Contents: 120 sheets of print paper  
1 cartridge of ink ribbon  
Paper size: 148 × 100 mm (5 7/8 × 4 inches)



### UPC-2045

#### A6-size Self-laminating Color Printing Pack

- Self-laminating color printing pack for UPX-C21, UP-D2600S/D2600

Contents: 120 sheets of print paper  
1 cartridge of ink ribbon  
Paper size: 148 × 100 mm (5 7/8 × 4 inches)



STILL IMAGE  
PRODUCTS

### UPC-2070E

#### A6-size Postcard Printing Pack

- Postcard printing sheet for UPX-C21, UP-2000 series

Contents: 150 sheets of print paper  
1 cartridge of ink ribbon  
Paper size: 148 × 100 mm (5 7/8 × 4 inches)



### UPT-210BL

#### Blue Transparent Film

- Type III blue transparent film roll for UP-980CE (210 mm × 12.5 m)



## 2-4 Printer accessories

### UPP-210HD

#### High Density Printing Paper

- Type II high density thermal paper roll for UP-980/960 (210 mm × 25 m)



### UPP-210SE

#### High Quality Printing Paper

- Type II normal density thermal paper roll for UP-980/960 (210 mm × 25 m)



### UPP-110HA

#### Superior Density Printing Paper

- Type IV superior density thermal paper roll for the UP-D890 (110 mm × 18 m)



### UPP-110HD

#### High Density Printing Paper

- Type II high density thermal paper roll for UP-D890/895MD/895 (110 mm × 20 m)



## 2-4 Printer accessories

### UPP-110S

#### High Quality Printing Paper

- Type I normal density thermal paper roll for UP-D890/895MD/895 (110 mm × 20 m)



### UPP-110HG

#### High Glossy Printing Paper

- Type V high glossy thermal paper roll for the UP-895MD/895 (110 mm × 18 m)



STILL-IMAGE  
PRODUCTS

### 5UPR-6080

#### Color Ink Ribbon

- Color ink ribbon for UP-D6500/D6400/D6300
- Provides YMCK color print and thermal lamination



### 5UPR-6040

#### Color Ink Ribbon

- Color ink ribbon for the UP-D6500/D6400/D6300
- Provides YMC color print and thermal lamination



## 2-4 Printer accessories

### UPR-6025

#### Black and White Ribbon

- Black and White ribbon for UP-D6500/D6400/D6300



### UPZ-2000M

#### Interface cable

- Interface cable between UP-D2500 and Apple Macintosh series computers

Connectors: Mini DIN 8-pin and Amphenol 36-pin  
Cable length: 1.5 m

### UPZ-7001

#### Video Interface Cable

- Interface cable between UP-7300MD/7200 and video equipment which outputs color high scan signals

Connectors: DN50-20-pin ↔ BNC (5)  
Cable length: 2 m

### UPZ-7002

#### Video Interface Cable

- Interface cable between UP-7300MD/7200 and video equipment which outputs monochrome high scan signals

Connectors: DN50-20-pin ↔ BNC  
Cable length: 5 cm

## 2-4 Printer accessories

### UPZ-7003

#### Hi-line terminator

•For 75Ω termination •Used when UP-7300MD/7200 is used without monitoring display

### UPZ-7000M

#### Video interface cable

•Interface cable between UP-7300MD/7200 and Apple Macintosh series computers

Connectors: DN50-20-pin ↔ D-sub 15-pin  
Cable length: 1.5 m, 0.3 m



STILL IMAGE  
PRODUCTS

### UPZ-7000I

#### Video interface cable

•Interface cable between UP-7300MD/7200 and IBM PS/2 computers

Connectors: DN50-20-pin ↔ D-sub 15-pin  
Cable length: 1.5 m, 0.3 m



# 3-1 Film scanner

## UY-S90

### Film Scanner

•Scans a frame in ten seconds, at a maximum resolution of 2,216 dpi (2,048 x 3,072 pixels). •High-speed consecutive scanning of a 36-frame, 135 type (35 mm) film at 1,108 dpi (1,024 x 1,536 pixels) which is saved on the host PC hard disk drive in just four minutes. •High-quality performance with Automatic Color Compensation. •Internal JPEG compression\*1 •DX code decoding\*1 •Automatic film loading. •Compatible with negatives and positives, B/W and color of the following formats: 135 type (35 mm) film (roll / mounted slide / film strip) AdvancedPhotoSystem (IX240) film (with optional IX240 film carrier) •Easy setup and simple operation

- Supplied accessories: Halogen lamp (2)  
Sleeve carrier  
Slide carrier  
AC power cable  
Operational manual  
TWAIN driver and utility software\*2 for Windows 95/98, Windows NT 4.0 and Mac OS 8.0 or later for PowerPC
- Optional accessories: Film Tray UYA-S77TR  
IX240 Film Carrier PW1-NSS  
Sleeve Film Carrier UYA-S77FC  
Auto Slide Feeder UYA-S90SF  
Halogen Lamp MPS-L60

### Specifications

Supported film:	135 type (35 mm) film (roll/mounted slide/film strip) AdvancedPhotoSystem (IX240) film (with optional IX240 film carrier) Accepts negatives, positives, B/W, and color				
Scanning method:	One-path scanning with 3-line RGB color CCD				
Light source:	Halogen lamp				
Scanning size:	135 type film: 23.5 x 35.3 mm (1 5/16 x 1 7/16 inches) IX240 type film: 15.6 x 27.9 mm (5/8 x 1 1/8 inches)				
Maximum resolution:	Approx. 2,212 dpi (135 type), 3,326 dpi (IX240)				
Scanning pixels:					
	Thumbnail	LD	SD	HD	UD
135 type Normal	192 x 128	384 x 256	768 x 512	1,536 x 1,024	3,072 x 2,048
(35mm) Panorama	192 x 68	384 x 136	768 x 272	1,536 x 544	3,072 x 1,088
Slide	176 x 116	352 x 232	704 x 464	1,408 x 928	2,816 x 1,856
Slide Panorama	176 x 68	352 x 136	704 x 272	1,408 x 544	2,816 x 1,088
IX240 Normal	192 x 108	456 x 256	912 x 512	1,824 x 1,024	3,648 x 2,048
(APS) Panorama	192 x 68	456 x 160	912 x 320	1,824 x 640	3,648 x 1,280
Classic	160 x 108	384 x 256	768 x 512	1,536 x 1,024	3,072 x 2,048
APS Slide	144 x 80	288 x 160	576 x 320	1,152 x 640	2,304 x 1,280

Scanning Time*3:		
Film type	135 (36 Ex. Film roll)	IX240 (40 Ex. Film roll)
Pre-scanning time	Approx. 40 s	
Scanning time	LD, SD	Approx. 2.5 s / frame
	HD	Approx. 2.5 s / frame
	UD	Approx. 10 s / frame
		Approx. 23 s / frame
Color depth:	Internal processing: 12 bits per color Output: 8 bits per color	
Interface:	SCSI-2 (Half-pitch, pin-type connector)	
System requirements:		
For Windows:	Platform PC/AT compatible OS Windows 95 / 98, Windows NT 4.0 SCSI host adapter Adaptec AHA-2940 or 2930 series Display SVGA (800 x 600 or higher) CPU Pentium processor recommended RAM 64 MB recommended	
For Macintosh*4:	CPU Power PC OS Mac OS 8.0 or later Display SVGA (800 x 600 or higher)	



- Safety regulations: UL1950, UL122, CSA C22.2 No.950, EN6950  
EMC regulations: FCC Class A, IC Class A, CE EN50081 class B+EN50082-1, AU AS4251.1
- Power requirements: 100 to 120/220 to 240 V, 50/60 Hz  
Power consumption: 240 V: 0.6 A max  
Dimensions: 438 (W) x 148 (H) x 560 (D) mm (17 1/4 x 5 7/8 x 22 1/8 inches)  
Mass: Approx. 12 kg (26 lb 7 oz)

\*1 Effective when used with the bundled scanning utility software.  
\*2 Utility software is not available in some areas.  
\*3 Does not include data transfer time.  
\*4 To use Macintosh G3 and G4, one of the following host adapter must be installed: Adaptec PowerDomain-2940 series or SCSIConnect 2906.

## 3-2 Film scanner accessories

### UYA-S77FC

#### Sleeve Film Carrier

- Sleeve film carrier for 135 type (35 mm) film

Mass: 630 g (1 lb 6 oz)



### UYA-S77TR

(attached with UY-S90)

#### Film Tray

- Film tray for roll type film

Mass: 600 g (1 lb 5 oz)

Dimensions: 215 × 134 × 259 mm  
(8 ½ × 5 ⅜ × 10 ¼ inches)



STILL-IMAGE  
PRODUCTS

## 4 Digital print server

### UPA-D3

#### Digital print server

- Incorporates DICOM 3.0 compliant software to provide multi-modality connectivity between DICOM\*<sup>1</sup> compliant medical imaging equipment and selected Sony printers
- Capability to daisy-chain up to six selected Sony printers
- Utilizes industry standard TCP/IP protocols
- Includes a sophisticated color matching system for use with digital images from medical modalities such as Ultrasound, X-Ray, Nuclear, MRI and CT

#### Specifications

- DICOM ver. 3.0
- CPU: R4700
- 32MByte RAM
- 1GByte HDD



#### Sony's DICOMpatible printers produce images through a completely dry process.

The UP-D70XR Digital Color Printer is capable of producing extremely high quality color or black and white images in both full-bleed Letter and regular Letter sizes. The printer features a fast print speed and a resolution of 300 dpi.

The UP-D5500/5600MD\*<sup>2</sup> Digital Color Printer is remarkable for its ability to produce extremely high resolution prints at 300 dpi, and its very fast print time. High quality A5 size prints can be made.



UP-D70XR



UP-D5500



UP-5600MD

\*1 DICOM (The Digital Imaging and Communication in Medicine) is standardized by ACR (The American College of Radiology) and NEMA (The National Electrical Manufacturers Association).

\*2 The optional UPK-5502SC Digital Interface Board and UPK-5500 Four-frame Memory Board need to be inserted in the UP-5600MD.



## 5-1 Digital still camera

### DKC-ST5

#### Digital Photo Camera

- Digital Photo Camera with the superior image quality
- For professional use in fields such as portraiture, commercial photography and microscopy
- 2/3-inch 1.4 million pixel CCDs
- 2560 × 2048 resolution (output)
- Clear picture without blur by three Progressive Scan CCDs
- Live monitoring and instant proofing of images are possible
- Overlay function provides the ability to preview the composition of an image shot by DKC-ST5 and an image from a computer
- Continuous shooting up to nine images
- Quick transfer of images via SCSI port to computer
- Easy operation

Supplied Accessories: Remote controller  
AC power cord  
Software (for Windows '95 and Macintosh)  
Ferrite core

#### Specifications

Image device:	2/3-inch progressive scan CCD
Total pixel number:	Approx. 1,400,000 pixels
Color separation:	3-CCD prism system with diagonal spatial offset
Lens mount:	2/3-inch bayonet
Output data size:	2,560 × 2,048
Sensitivity:	ISO 20, 40, 80, 160 equivalent (selectable)
Shutter speed:	1/10,000 to 4 sec. 1/1,000 to 1/15 sec. (with flash sync.)
Continuous shooting:	2 frames/sec. (up to 9 frames)
Buffer memories:	9 frames
Digital interface:	SCSI-2, RS-232C
Monitor out:	Video, S-Video, R/G/B
Dimensions	Camera head: 120(W) × 90(H) × 202.2(D) mm (4 3/4 × 3 5/8 × 8 inches) Processor unit: 211(W) × 365(H) × 128.5(D) mm (8 3/8 × 14 3/8 × 5 1/8 inches)
Mass:	Camera head: 1.3 kg (2 lb 14 oz) Processor unit: 6 kg (13 lb 4 oz)



## 5-1 Digital still camera

### DKC-5000

#### Digital Photo Camera

•High resolution of 800 (h) x 800 (v) TV lines •1/2-inch three-CCD camera (470K pixels each) •Diagonal pixel offset  
•10-bit analog-to-digital conversion and Look Up Table (LUT) realizing delicate adjustments of color saturation and gamma characteristics •Strobe synchronization •Equipped with two-frame memory •Controllable from a computer via SCSI •1/2-inch 38 mm bayonet mount

#### Supplied Units/Accessories:

Camera head  
Digital processor  
Camera cable (10 m)  
Release switch (RM-S72)  
Software (Photoshop Plug-in)  
SCSI cable

#### Optional Accessories:

AC power cord  
DKB-5008 (Frame Memory board)  
VCL-713BXS  
DXF-40BCE  
DXF-41

#### Specifications

##### Camera Head

Imager: 3-chip 1/2-inch Interline-transfer CCD  
Effective picture elements: 440,000 pixels  
Total picture elements: 470,000 pixels  
Resolution: 800 (horizontal) x 800 (vertical) TV lines  
Spatial pixel offset: Horizontal and vertical  
Lens mount: 1/2-inch 38mm bayonet  
Signal-to-noise ratio: More than 56dB (at ISO 100)  
Sensitivity: ISO 100, 200, 400, 800  
White balancing : Automatic (Flash ON/OFF)  
Manual (Red gain and Blue gain adjustable individually)  
Electric shutter: 4 to 1/10,000 sec.  
Gamma: Switchable (on/off/User1/User2/User3)  
Contrast: Adjustable from -127 to 127  
Color temperature pre-setting: 3200K/5600K  
Input/output connector: Processor: 20-pin  
Lens: 6-pin  
EVF: DIN 8-pin  
REMOTE: 4-pin, for RM-S72  
FLASH: X-connector  
PC IN: Stereo mini  
TRIG: Stereo mini  
Operating temperature: 5 °C to 35 °C  
Dimension: 70(W) x 72(H) x 123.5(D) mm  
Mass: (Approx.) 620 g

##### Digital Processor

Analog/Digital conversion: 10-bit  
Final image data size: 1520 (h) x 1144 (v) x 3 channels (5.0 Mbytes)  
Memory: 2 planes  
Analog output: R/G/BSync.: BNC x 4, 0.7 Vp-p, 75 ohms  
(525 lines/ 50 Hz)  
Digital interface: SCSI-2  
Input/output connector: Camera: 20-pin  
FLASH: X-connector  
REMOTE1: 12-pin  
REMOTE2: Mini  
REMOTE3: D-sub 9-pin  
SCSI: Amphenol 50-pin x 2  
Power requirements: AC 120 V (50/60 Hz)  
Power consumption: 1.0 A  
Dimension: 423(W) x 105.5(H) x 356.5(D) mm  
Mass: Approx. 9 kg



## 5-1 Digital still camera

### DKC-CM30

#### Digital Still Camera

- Accepts C-mount capability •Alternative operating methods-shutter release on the handheld camera with the supplied remote release, optional DKA-GP30 Camera Grip or RM-91 Remote Control Unit •640 × 480 pixels resolution
- Progressive Scan CCD for clear pictures without movement blur •JPEG compression •4 MB flash memory holds 30 images captured in high resolution of 640 × 480 or 120 images captured in standard resolution of 320 × 240 pixels
- Strobe synchronization capability •Immediate viewing of captured images with the LCD monitor •Computer control and image data transfer via RS-232C port

Supplied accessories: Remote shutter release  
RS-232C cable  
Video Cable  
RCA/BNC conversion connector  
MGI PhotoSuite SE on CD-ROM  
Operating instructions for camera and software

Optional accessories: Camera grip DKA-GP30  
AC power adapter/charger DKA-AC30  
Rechargeable lithium-ion battery NP-F550

#### Specifications

Image device: 1/3-inch progressive scan CCD  
(Effective pixel number: 320,000 pixels)

Image data size: 640 × 480 pixels

Compression method: JPEG

Storage: 4 MB internal flash memory

Number of images: High resolution: 30 images (640 × 480 pixels)  
Standard resolution: 120 images (320 × 240 pixels)

White balance: Auto/3,200K/5,400K\* (selectable)

Lens mount: C-mount

Exposure control: CCD iris (when flash is not used)

Flash: External flash, hot shoe and X terminal equipped

Photometric system: TTL, CCD, centre-weighted averaging metering system

Shutter speeds: 1/4 to 1/4,000 seconds

Sensitivity: Equivalent to ISO 90

LCD monitor: 2-inch TFT color LCD monitor with 110,000 pixels

Self-timer: 10 seconds

Digital I/F: RS-232C

Video output: NTSC

Other I/O: Remote shutter release connector, DC IN connector

Power supply voltage: 8.4 V (at AC power adapter connector)  
7.2 V (at battery terminals)

Power consumption: 3.7 W (when LCD monitor is on)

Dimensions: 81 (W) × 61 (H) × 58 (D) mm  
(3 1/4 × 2 1/4 × 2 3/8 inches)

Mass: 430 g (15 oz)



# 5-1 Digital still camera

## DKC-FP3

### Digital Still Camera

- Professional digital still camera ergonomically designed similar to 35 mm cameras
- Equipped with high speed digital interface, IEEE1394
- High performance Wfine CCD™ to achieve high resolution of 1,344 x 1,024 pixels
- 5x Optical zoom lens with fast aperture
- Optical viewfinder and 2.5-inch color LCD
- Auto/manual operations for control settings
- Fast and Continuous Operation with 3 MB buffer memory
- Up to 2.5 hours of operation (1,700 consecutive shots\*) with InfoLITHIUM™ Rechargeable Battery Pack
- Removable PCMCIA Card\*\* and "Memory Stick"™ Media
- Histogram feature for checking the exposure
- Guide Line Function (Top Marker, Bottom Marker)

\* Flash and LCD monitor off (CAM mode)

\*\* Some type of PC card may not be used.

Supplied Accessories: 8 MB "Memory Stick" MSA-8A  
"Memory Stick"/ PC Card Adaptor MSAC-PC2  
Remote Controller RM-S7D  
Remote controller cable  
Video cable  
IEEE1394 cable (6pin-6pin/3.5 m)  
Lens cap  
Finder cap  
AC adapter/charger (AC-VQ800)  
TWAIN driver software (CD-ROM)  
Operation Manual

Optional Accessories: InfoLITHIUM Rechargeable Battery Pack NP-F550  
Soft Case LCM-D700  
IC Recording Media "Memory Stick" MSA-4A/8A/16A  
Digital Color Printer UP-D2500

### Specifications

#### Imager

Optical Size: 1/2-inch  
Imager Type: Wfine CCD (Progressive Scan, RGB Primary Color Filter, Square Pixel CCD)  
Number of Pixels: 1.5 million (Total), 1.4 million (effective)

#### Lens

Zoom Ratio: 5x  
F No.: F2 to 2.4  
Focal Length: f = 5.2 to 26 mm (35 mm film equivalent: 28-140mm)  
Element: 13 elements in 10 groups  
Filter Size: ø62 mm  
Minimum Object Distance: 20 cm in all Focal length, Auto Macro  
Aperture: F2 to 11 (Wide), F2.4 to 11 (Tele) / 21 steps

#### Camera

Shutter Speed: 4 to 1/2,000 s (1/4 to 1/2,000 s in AE mode, ISO 50)  
(1/8 to 1/2,000 s in AE mode, ISO 100)  
(1/30 to 1/2,000 s in AE mode, ISO 400)

Shutter: Electrical shutter and mechanical shutter  
Focus Control: CCD TTL Auto/Manual  
Exposure Control: Programmed AE/Aperture priority AE/  
Shutter speed priority AE/Manual, AE Lock function

EV Compensation: -2EV - +2EV (1/4 EV steps)  
Metering System: Center-weighted averaging/Spot  
Sensitivity: ISO 50/100/400 equivalent  
White Balance: Auto/Hold/Indoor/Outdoor  
Digital Interface: IEEE1394 (Digital Camera Command Set)  
6-pin (Power source is not available.)

#### Built-in Flash

Type: Self-regulating Flash  
G.N.: 10  
Mode: Auto/Forced/Disable  
Synchronization Speed: 4 to 1/2,000 s

#### Optical Viewfinder

Type: SLR Type, Built-in Focusing Screen  
Field of View Percentage: 92%  
LCD Display in Finder: Shutter Speed, Aperture, EV Compensation,  
AE Lock, AF, Flash, White Balance, Metering System

#### LCD Monitor

Size: 2.5-inch  
Type: TFT color LCD made of low-temperature polysilicon  
Resolution: 180,000 dots  
Display Control: Contrast, Brightness, Color, Picture, Display Size  
Refresh Rate: 25 frames/s



#### Recording System

Image Data Size: 1,344 x 1,024 pixels, 640 x 480 pixels  
Recording Media: PCMCIA Flash ATA Typell  
"Memory Stick" (PC card adaptor required)  
Recording Format: JPEG (Compressed), TIFF (No Compressed)

#### Number of Images

Recording Media	Data Size	JPEG			TIFF
		Low	Middle	High	Super
16 MB Memory Stick	1,344 x 1,024	82	41	20	3
16 MB Memory Stick	640 x 480	246	123	61	17
8 MB Memory Stick	1,344 x 1,024	40	20	10	1
8 MB Memory Stick	640 x 480	122	61	30	8

#### Functions

Camera Mode: Continuous shooting, 2x digital zoom, interval recording, Self-timer  
Playback Mode: INDEX display, Enlarged, Rotate, Autoplay, Quick-review, Protect, Segmentation (Folder)  
Other input/output: Video output, Accessory shoe

#### General

Power Requirement: DC 7.2 V  
Power Consumption: 0.9 A, DC 7.2 V (CAM mode with LCD monitor ON)  
0.6 A, DC 7.2 V (PLAY mode with LCD monitor ON)  
Power Supply: InfoLITHIUM Rechargeable Battery Pack NP-F550  
AC-VQ800  
Battery Life/ Shots: 2.5 hours/1,700 shots  
(Flash off, LCD monitor off, CAM mode)  
Dimension (W/H/D): 133 x 104 x 153 mm (5 1/4 x 4 1/8 x 6 1/8 inches)  
Mass: Approx. 890 g (1 lb 15 oz)  
(without battery and PC Card)

#### Driver Software:

TWAIN Driver, 1394 Driver  
Computer: IBM PC/ AT Compatible  
OS: Windows 98  
CPU: Intel MMX Pentium 150MHz or more  
Memory: 32 MB or more  
(64 MB or more is recommended.)  
CD-ROM Drive  
Recommended application software  
Adobe PhotoShop 5.0 or higher  
Adobe PhotoDeluxe 3.0 or higher

#### Recommended IEEE1394 Adaptor

IEEE1394 Adaptor (Board): RATOC-PCIFW1 (by RATOC System Inc.)  
IEEE1394 Adaptor (PC Card): RATOC-CBFW1 (by RATOC System Inc.)

## 5-2 Digital still recorder

### DKR-700

#### Digital Still Recorder

- Digital still image recorder for a wide range of applications
- Recording medium: MD Data medium/Picture MD •480 TV lines digital recording •JPEG Compression •Selection is possible from five picture modes - Non Compression/Fine/Normal/Quick1/Quick2 •Flash Synchronization •Image Information such as the title of the image, sent from RM-C700 or an external computer, can be recorded along with the images •Interval recording to be set from 5 sec. to 60 min. •Automatic playback •Multiple inputs/ outputs •List search function with RM-C700 •Image Search function •Rapid image retrieval •SCSI port equipped allowing image data to be transferred to a computer •RS-232C port allows sophisticated control from a computer •Foot switch operation is possible with and FS-30



Supplied Accessories:	Operational manual Software (Photoshop Plug-in for Windows) AC Power Cord
Optional accessories:	RM-C700 (Remote Control Unit) RM-91 (Remote Control Unit) FS-30 (Foot Control Unit) MMD-140 (Rewritable MD DATA medium)

#### Specifications

Recording Medium:	Mini Disc for DATA
File Format:	Picture MD
Data Compression Method:	JPEG Base Line; Fixed Data Length algorithm
Data Size/Sub Sampling:	MAIN 656 × 496 (Y:U:V 4:2:2) SD(Quick play back) 640 × 480 (Y:U:V 4:2:0) INDEX (Image search) 80 × 60 (Y:U:V 4:2:0)
Sampling Frequency:	12.273 MHz
Digital Interface:	SCSI RGB 4:4:4 pixel sequential
Digital I/O	SCSI-2 Half pitch pin connector
Horizontal resolution:	More than 480 TV lines
Video input:	Composite (BNC × 1) Y/C (DIN 4-pin S type) RGB (BNC × 3) Sync (BNC × 1)
Video output:	Composite (BNC × 1) Y/C (DIN 4-pin S type) RGB (BNC × 3) Sync (BNC × 1)
Image information:	Image Number (Auto increment) Title 15 digits ID Number 15 digits year/month/date/hour/min./sec. Comment 250 Bytes
Recording mode:	NON COMPRESSION/FIN/NORMAL/QUICK1/QUICK2
Camera control mode:	CAMERA1 BNC (External Sync) (for Long Time Exposure by DXC-930/950) CAMERA 2 BNC (External Sync) (for REC Control by DXC-950)
External control:	RS-232C (D-sub 9-pin female) for computer control
Power requirement:	AC 120 V, 50/60 Hz
Power consumption:	0.60 A max.
Mass:	Approx. 7.0kg
Safety approval:	UL-2601-1, UL-1950, CSA C22.2 No.601.1, CSA C22.2 No.950, FCC Class A

\*When flash is on, white balance is automatically set to 5400K.

## 5-3 Digital still camera/recorder accessories

### RM-C700

#### Remote control unit for the DKR-700

- For convenient operation of the DKR-700
- File name can be input to the images of the DKR-700



### FS-30

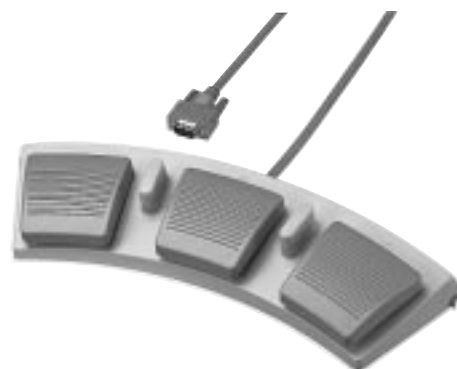
#### Foot Switch

- Multiple function controls over the UP-5600MD/5500 connected through the D-sub 9-pin remote interface.

Supplied accessory: Operation manual

#### Specifications

Terminal: Disub 5-pin  
Dimensions: 337.3(W) × 46.1(H) × 128.0(D) mm



### MMD-140

#### Rewritable MD DATA

- Large capacity (140MB)
- Compact size (Diameter 64mm, Width 1.2mm)



### RM-91

#### Remote control unit

- To record or print an image on a still video recorder or a video printer

Connector: Stereo mini  
Cable length: 5 m



## 5-3 Digital still camera/recorder accessories

### DKA-GP30

#### Camera Grip

•DKC-CM30 Camera Grip for stable photographing

Dimensions: 141.3 (W) × 110.4 (H) × 59.9 (D) (mm)  
(5 <sup>5</sup>/<sub>8</sub> × 4 <sup>3</sup>/<sub>8</sub> × 2 <sup>3</sup>/<sub>8</sub> inches)

Mass: 280 g (10 oz)



### DKA-AC30

#### AC Power Adapter/charger

•DKC-CM30 AC adaptor/battery charger for charging Lithium-ion battery such NP-F550/F530

Dimensions: 56 (W) × 44 (H) × 100 (D) (mm)  
(2 <sup>1</sup>/<sub>4</sub> × 1 <sup>3</sup>/<sub>4</sub> × 4 inches)

Mass: Approx. 190 g (7 oz)



STILL IMAGE  
PRODUCTS

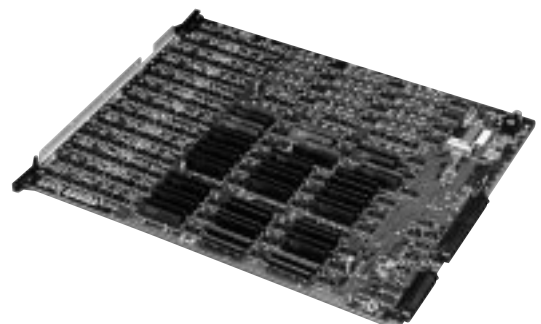
### VCT-S20

Tripod Adaptor for the DKC-5000



### DKB-5008

Frame Memory Board for the DKC-5000



## 5-3 Digital still camera/recorder accessories

### VCL-713BXS

#### Zoom Lens for DKC-5000

•x13 Zoom Lens •Standard lens for DKC-5000

Lens mount: 38 mm bayonet mount  
Focal length: 7.5 to 97.5 mm  
Maximum relative aperture: F1.4  
Minimum focal distance: 1.0 mm  
Filter screw: 72 mm  
Aperture speed : 0.4 s  
Control: Focus: Manual, Zoom: Manual  
Iris: Servo/Manual  
Mass: 850 g (1.9 lb)



### VCL-1205BYS

#### Zoom Lens for DKC-ST5

Lens mount: 2/3-inch bayonet  
Focal length: 12.5 to 63 mm (equivalent to a focal length of 50 to 252 mm in 35 mm film format)  
Aperture: F2 to F16  
Mass: 1.2 kg (2 lb 10 oz)

