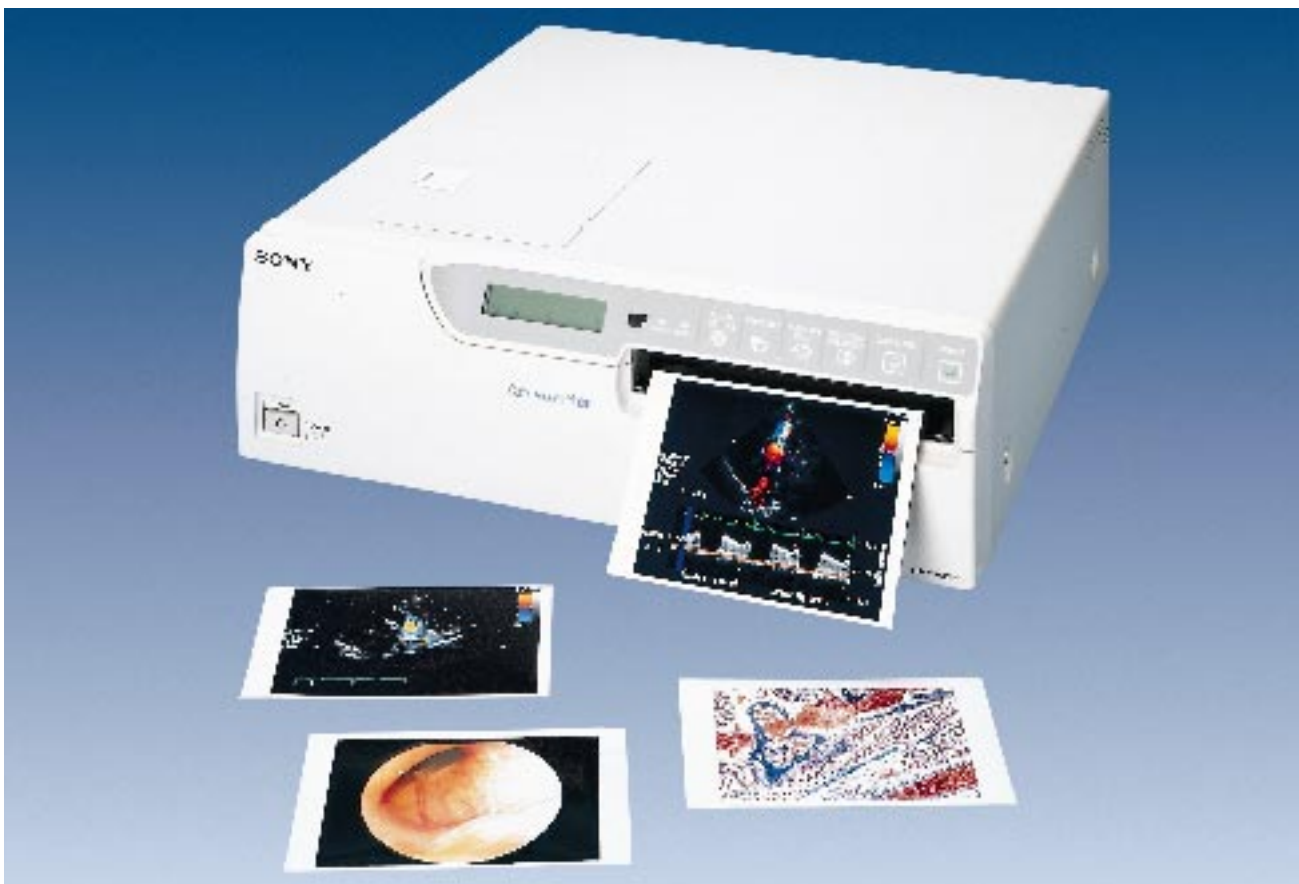


UP-2900MD/UP-2950MD Color Video Printer



Sony
Medical
Systems

The UP-2900MD (single frame memory) and the UP-2950MD (four frame memory) Color Video Printers are full featured small format printers designed for medical and scientific applications. Both provide high resolution prints in seconds and are ideal for image creation, patient record files and patient referring copies. High quality performance is possible from almost any standard video signal.



Features

- ◆ 310 DPI resolution
- ◆ 37 second print speed
- ◆ 8 bit image quality (256 gradations and 16.7 million colors per dot)
- ◆ Multiple Video Inputs RGB, Y/C and composite
- ◆ Front panel LCD display and on-monitor menu selection
- ◆ Video Loop through (powered up or down)
- ◆ 200 sheet print media capacity
- ◆ Multiple pictures on one sheet capability (one, two, four, sixteen)
- ◆ RS-232C interface
- ◆ UL-2601-1 listed
- ◆ Worldwide power and video signal capability
- ◆ Back to live mode

Specifications - UP-2900MD/UP-2950MD Color Video Printer

Printing Method:	Dye transfer sublimation printing	External control:	RS-232C (D-sub 25-pin) Remote 1 (Special mini) or optional remote control unit RM-5500 Remote 2 (Stereo mini) or optional remote control unit RM-91 or foot switch FS-20/36
Thermal Head:	1024 elements (12.2 dots/mm)	Power requirements:	100V-240V, 50/60Hz
Gradation:	256 gradations for Yellow, Magenta, Cyan Over 16.7 million colors per dot	Power consumption:	Max. 1.8A
Printing paper size:	130 x 88mm (5 1/8 x 3 1/2 inches)	Dimensions:	370 (W) x 125(H) x 417 (D) mm (14 5/8 x 5 x 16 1/2 inches)
Printed picture size:	Max. 110 x 80mm (4 3/8 x 3 1/4 inches)	Weight:	10.5kg (23lb. 2oz)
Picture elements:	860 x 976 dots	Safety standards:	UL2601-1 listed
Picture Memory:	One frame (UP-2900MD) Four frame (UP-2950MD)	Supplied accessories:	Color Printing Pack (for 10 prints) Paper Tray (1) Print Cover (1) AC Power Cable Operation Manual
Printing time:	37 seconds	Optional accessories:	RM-5500 Wired/Wireless Remote Control Unit RM-91 Remote Control Unit FS-20 Foot Switch FS-36 Foot Switch UPC-2010 Color Printing Pack (200 prints) UPC-2020 Black and White Printing Pack (200 prints) UPA-2001 Paper Ejector
Inputs:	Analog RGB (BNC x 4) RGB: 0.7Vp-p, 75Ω, unbalanced Sync: 0.2 to 4.0Vp-p, negative, 75Ω, unbalanced Y/C separate (4-pin S terminal) Y: 1.0Vp-p, sync negative, 75Ω, unbalanced C: 0.286Vp-p, 75Ω, unbalanced Composite video (BNC), NTSC 1.0Vp-p sync negative, 75Ω, unbalanced		
Outputs:	Analog RGB (BNC x 4) RGB: 0.7Vp-p, 75Ω, unbalanced Sync: 1.0Vp-p, negative, 75Ω, unbalanced Y/C separate (4-pin S terminal) Y: 1.0Vp-p, sync negative, 75Ω, unbalanced C: 0.286Vp-p, 75Ω, unbalanced Composite video (BNC), NTSC 1.0Vp-p sync negative, 75Ω, unbalanced		



BACK PANEL



UPC-2010 & UPC-2020

SONY

Sony Electronics Inc.
Medical Systems Division
1 Sony Drive
Park Ridge, NJ 07656
Telephone: 1-800-535-SONY
(In New Jersey, 201-930-7098)
<http://www.sony.com/medical>



**Sony
Medical
Systems**