

# UP-21MD

Color Video Printer

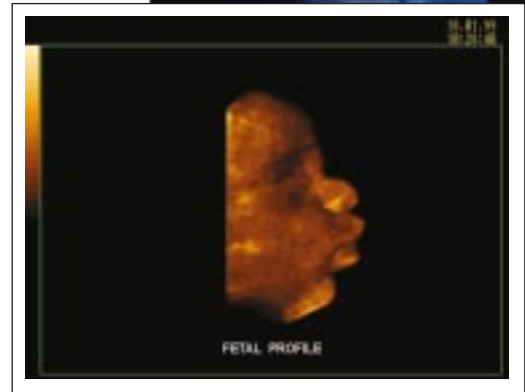
The Sony UP-21MD printer is the ideal choice for the ultrasound, endoscopy and microscopy markets. This printer's compact design will help to free up space on medical carts, and can be easily integrated. Although small in size, the UP-21MD printer offers a wide variety of features. Using Sony's Dye Sublimation printing technology, the UP-21MD produces near A6 size prints with approximately 400dpi in just 20 seconds, using the Sony UPC-21L media. Front panel control, loading and maintenance operation offer extra convenience and accessibility.



UP-21MD

- Superior Print Quality and Color Reproduction at approximately 400 dpi Resolution
- Compact size
- High-Speed Printing, A6 Size
- Four Frame Memory
- Versatile Analog Video Inputs and Outputs
- Convenient Remote Control Capability
- RS-232C Port
- 2 or 4-Split Image Print Mode
- Monitor Loop-Through for System Power Saving
- World Wide Power and Video Capability

SONY®



Sony Medical

# UP-21MD

## Specifications

### UP-21MD

Printing Method	Dye Sublimation
Thermal Head	403 DPI
Gradations	256 Gradations, over 16.7M colors per dot
Resolution	403 DPI
Printed Picture Size	NTSC: S Size: Full 3 3/4" x 2 7/8" L Size: Full 5" x 3 5/8"
Print Speed	NTSC: UPC-21S approximately. 16 sec. (high speed mode) UPC-21L approximately. 20 sec.
Paper Capacity	S Size tray: Max. 80 sheets L Size tray: Max 50 sheets
Power Consumption	100-120 Volts 1.8 A, 220-240 Volts 1.0A
Dimensions	8 3/8 x 5 x 15 5/8 (inches)
Weight	13.3lbs. (6.5 KG)
Control Terminal	Remote 1 for optional RM5500, RM91 Remote 2 for optional FS-36 RS-232C Interface port for external computer
Media	UPC-21L (L size standard color print pack) (4 x 50 packs) UPC-21S (S size standard color print pack) (3 x 80 packs)
Safety Standards	UL 1950, UL 2601-1, Listed, CSA C22.2 No. 601.1, No. 950, EN60950, EN60601-1
Supplied Accessories	AC Power Cable Instruction Manual Warranty Card Paper Tray (L Size) Printing Media (UPC-21L, 10 prints of paper and ribbon)
Optional Accessories	Printing Media (UPC-21L, UPC-21S) Remote Controls: RM91, RM5500 Foot Switch: (FS-36) Slide Adapter: (UPA-21SA)



UP-21MD Back Panel



UPC-21L Media



UP-21S Media

# SONY

Sony Electronics Inc.  
1 Sony Drive, Park Ridge, NJ 07656

[www.sony.com/medical](http://www.sony.com/medical)

©2001 Sony Electronics Inc. All rights reserved. Reproduction in whole or in part without written permission is prohibited. Features and specifications are subject to change without notice.

All non-metric weights and measures are approximate. Sony is a trademark of Sony.

Caution: Federal (USA) law restricts this device to sale by or on the order of a physician or other appropriately licensed medical professional.

Caution: See product labeling for indications, contraindications, warnings, cautions and directions for use.

ME-UP21MD