

SONY®

MOTORIZED HIGH SPEED DOME CAMERA SYSTEM

# UNI-DN18SO/ UNI-DN18FI SERIES

## MOTORIZED HIGH SPEED DOME CAMERA SYSTEM

- Integrated color & monochrome camera
- Automatic switching between color and monochrome modes
- UNI-DN18SO: 7" outdoor type with clear lower dome
- UNI-DN18FI: 6" indoor type, flush mount w/Tinted lower dome
- Sony camera module w/integrated 18X optical zoom and 12X digital zoom
- 1/4" Super HAD CCD™ for excellent low light preferences
- 0 lux shot mode capability - when used with IR illuminators
- Better than 470 TV lines of horizontal resolution
- Wide range ATW capability - 2000°K to 10,000°K works great under 2100°K high pressure sodium fixtures
- 360° continuous pan, 90° tilt
- Integrated RS-422 receiver for twisted pair control
- Variable speed manual control via UNI-TCTL1, from 1° to 80° per second
- 64 presets at speeds of up to 400° per second
- Up to 4 camera tours including UniTour™ function
- 3 lux color sensitivity, 0.2 lux monochrome sensitivity



UniDome



# MOTORIZED HIGH SPEED DOME CAMERA SYSTEM

## UNI-DN18SO/UNI-DN18FI SERIES

### UNIDOME™ MOTORIZED DOME CAMERAS AND ACCESSORIES.

UNI-DN18SO and UNI-DN18FI are motorized high speed dome camera systems. They incorporate 18X zoom high resolution, and high sensitivity auto-focus color cameras with a pan and tilt assembly that allows 360° continuous pan with a built in receiver. Accurate color reproduction by day, and with Sony's Day-Night feature, exceptional low light performance at night. The result is a surveillance dome system that can be configured to perfectly fit your needs.

- Integrated high-speed dome system-ready to install and incorporate Day/Nite auto focus camera
- Both indoor and outdoor Flush and Wall Mount models
- Outdoor wall mount with heater/fan
- Auto-focus camera with optical zoom lens
- Pan and tilt speeds up to 400° per second
- Quick release mechanism with safety catch
- Twisted pair control
- Nonvolatile memory

### UNI-TR1 DEVICE INTERFACE MODULE



- Interface to HSR-2, VCR and Multiplexer
- 9 VDC / 12 VAC power
- DIP switch addressable
- One unit required for each device

### UNI-DD1 RS-422 DATA DISTRIBUTION UNIT

- RS-422 data distributor
- Required when data signal is routed in star configuration
- 1 input X 16 outputs
- 9 VAC / 12 VDC input power



### UNI-APM1 POLE MOUNT ADAPTOR WITH 30" STRAPS, OUTDOOR



- Designed for installing domes on round utility poles
- Mates with wall-mount bracket
- Can also be used to mount outdoor power supply
- Heavy-duty aluminum construction
- Install with bolts or metal straps
- Includes mounting hardware for wall-mount bracket
- Includes stainless steel straps

### UNI-SM1 SWING ARM MOUNT, OUTDOOR

- Designed for mounting UniDome on roof parapet
- Extends dome 35 inches from wall
- Allows full 360° roof top viewing
- All aluminum construction
- Swivel base for safe dome access
- Built-in cable junction box
- Pre-wired for easy installation



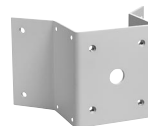
### UNI-ARPMB1 ROOF/PARAPET MOUNT ADAPTOR FOR UNI-DN18SO ONLY



- Designed for installing domes on edge of roof
- Hinged to allow safe service
- Mates with parapet capping bracket
- Heavy duty aluminum construction

### UNI-ACA1 CORNER MOUNT ADAPTOR FOR UNI-18SO ONLY

- Designed for installing domes on building corners
- Mates with wall-mount bracket
- Mounting holes for outdoor power supply
- Includes mounting hardware for wall-mount bracket
- Heavy duty aluminum construction



### UNI-ACFI PARAPET CAP BRACKET-STRAIGHT FOR UNI-DN18SO ONLY



- Makes it easy to install domes on roof parapet
- Mates with roof-mount adapter
- Eliminates need to penetrate top of parapet
- Reduces installation time
- Heavy duty aluminum construction
- Includes mounting hardware for roof-mount adapter

### UNI-ACC1 PARAPET CAP BRACKET-CORNER FOR UNI-DN18SO ONLY

- Makes it easy to install domes on roof parapet
- Mates with roof-mount adapter
- Eliminates need to penetrate top of parapet
- Reduces installation time
- Heavy duty aluminum construction
- Includes mounting hardware for roof-mount adapter



### UNI-AWM1 WALL MOUNT BRACKET



- Easy-to-install wall mount
- Attractive ABS construction
- Supports up to 35lbs.
- Removable cover for easy cable connections
- Mates with pole, roof, and corner-mount adapters

### UNI-AFCK1 6" CEILING MOUNT RING FOR HARD DROP CEILINGS, FLUSH MOUNT INDOOR

- Designed for installing flush-mount domes in non-removable false ceilings
- Allows complete installation from below ceiling
- Mounting hardware included

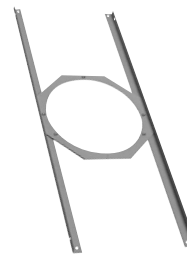


### UNI-ADCK1 6" WHITE DROPPED CEILING PANEL (2' X 2'), FLUSH MOUNT INDOOR

- Designed for installing flush-mount domes in suspended ceilings
- Outside dimensions 24" X 24"
- Mounting holes predrilled
- 24 gauge steel construction
- White enamel finish
- Mounting hardware included



### UNI-ATBKI T-BAR SUPPORT KIT FOR DROPPED CEILINGS, FLUSH MOUNT INDOOR



- Suspended ceiling installation kit for flush-mount domes
- Used with existing ceiling tile
- Distributes weight to T-bar supports
- Mounting hardware included

### UNI-APS11 INDOOR POWER SUPPLY - 8 ISOLATED 24 VAC, 1AMP TAPS FOR INDOOR MODELS

- Powers eight indoor UniDome Cameras
- Compact design
- 115/230 VAC input
- Eight isolated 24 VAC, 1 amp outs\*
- Resettable fuse for each output
- Rack-mount option



\*Note-Do not use for UniDomes with heater-and-fan option.

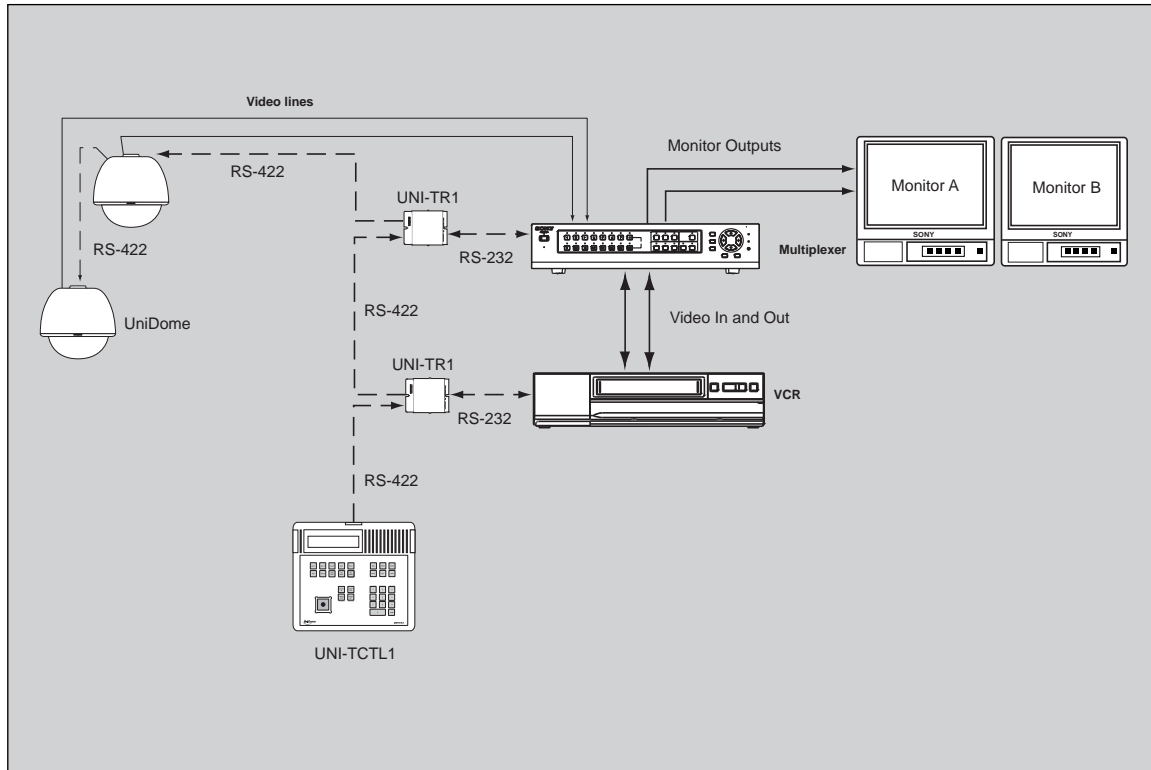
### UNI-APS01 OUTDOOR POWER SUPPLY IN WEATHERPROOF ENCLOSURE 24 VAC, 100 VA FOR UNI-DN18SO ONLY

- 24 Vac weatherproof power supply
- 52 VA fused output
- Designed for outdoor UniDome installations
- Power pan/tilt, camera, and heater and fan
- Mounts directly to wall
- Easy cable connections
- Mounting hardware included

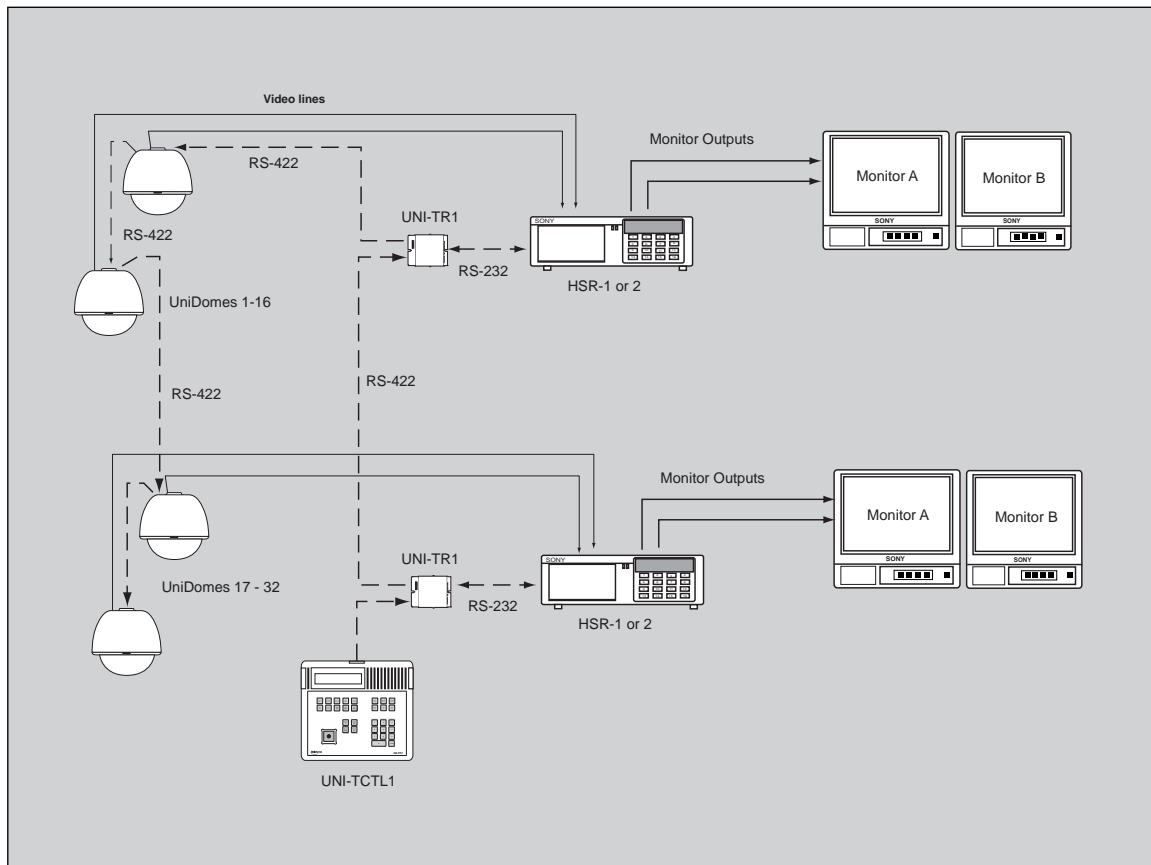


## INSTALLATION EXAMPLES

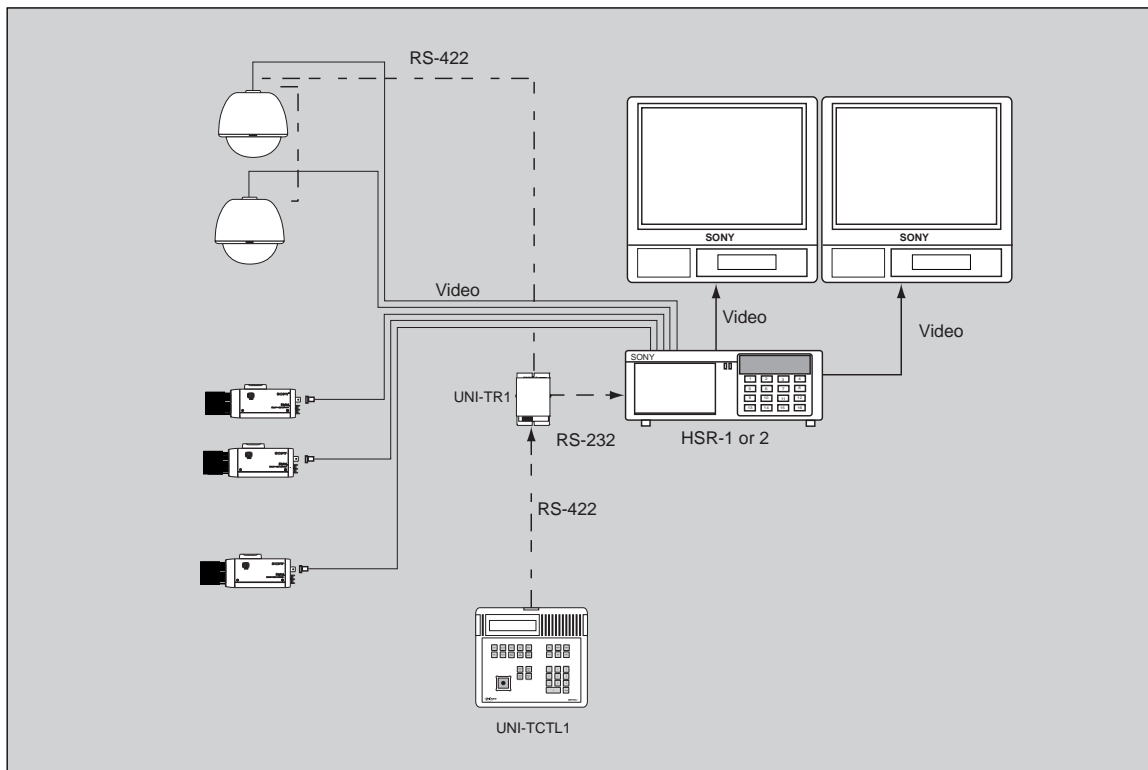
UniDome system with multiplexer and VCR control



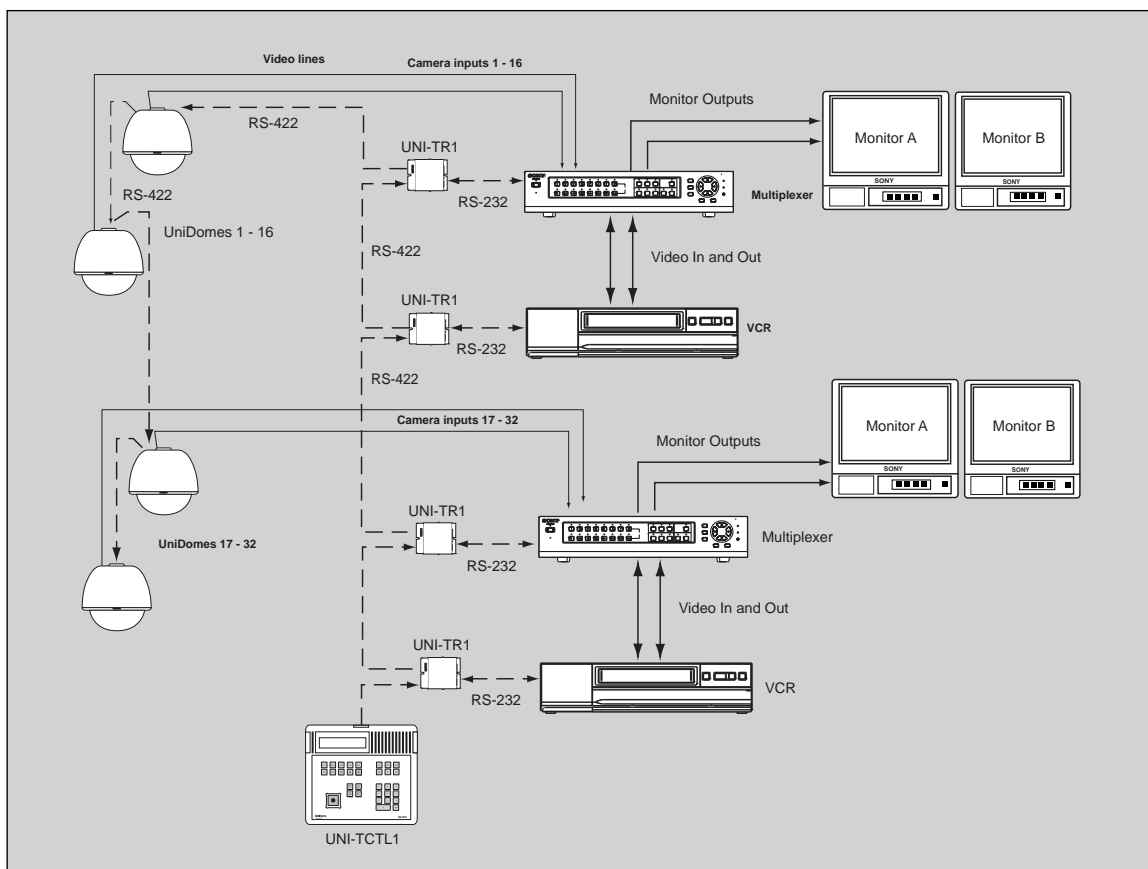
UniDome system with multiple HSR units



UniDome system with HSR control



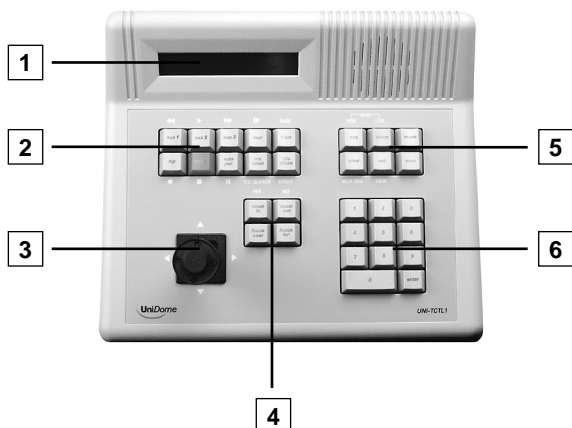
UniDome system with multiple multiplexer and VCR controls



# UNI-DN18SO/ UNI-DN18FI SERIES

## MOTORIZED HIGH SPEED DOME CAMERA SYSTEM

UNI-TCTL1 Controller



- 1 LCD Display Window
- 2 Overlay: HSR & multiplexer/VCR function keys  
Normal: UniDome function keys
- 3 3-Axis joystick
- 4 UniDome lens controls: Zoom and Focus  
Overlay: Yes/No for HSR prompt responses
- 5 Mode, preset and monitor keys  
Overlay: Multiplexer/VCR select keys, multi-screen views
- 6 Site select, call up keys

### UNIDOME VARIABLE SPEED CONTROLLER KEYPAD WITH 3-AXIS JOYSTICK, UNI-TCTL1

- Pan/Tilt Control with 3 Axis Joystick Controls up to 511 UniDome Cameras
- Mode Functions allow Control of Sony Multiplexers and Time Lapse VCRs via Optional UNI-TR1 Device Interface Module
- Allows Remote Control of Sony HSR-1/1 and HSR-2 Digital Recorders via Optional UNI-TR1 Device Interface Module
- Multi-Screen View Mode Selections for Sony Multiplexers and HSR Series Recorders
- Variable Speed Control of UniDome Cameras
- Liquid Crystal Display for Easy Setup and Operation
- Programmable Nonvolatile Memory

## SPECIFICATIONS

### UNI-DN18SO/UNI-DN18FI

**Imaging device:** 1/4" Super HAD™ CCD Sensor

**Picture elements:** 768 (H) x 495 (V)

**Signal format:** NTSC

**Sync system:** Internal/External

**Horizontal resolution:** Better than 470 lines

**Lens:** 18X Zoom f=4.1 to 73.8mm; F1.4 to F3.0, auto iris

**Digital zoom:** 12X (216X with optical zoom)

**Min. sensitivity:** 3 lux (F1.4)  
0 lux w/IR cut filter off, w/IR illumination  
0.2 lux w/IR cut filter off

**S/N:** Better than 50dB

**White balance:** Auto & ATW modes (selection from UNI-TCTL1)

**Video output:** Composite 1.0Vp-p, sync negative

**Input voltage:** AC 24V, 60Hz

**Power consumption:** 51 VA for UNI-D18SO  
16 VA for UNI-D18FI

**Control signal:** RS-422, 4800 baud

**Connectors:** VIDEO: BNC x 1  
CONTROL: Terminal strip  
POWER: Terminal strip

**Weight:** 4.9 lbs

**Construction:** PAN/TILT: 0.125" aluminum frame  
HOUSING: ABS plastic  
LOWER DOME: 0.06" Acrylic

**Finish:** INDOOR: Black  
OUTDOOR: Black Interior, white exterior  
PAN/TILT: Black anodized  
CAMERA: Black  
DOME: Clear for UNI-D18SO  
Tinted for UNI-D18FI

**Pan Travel:** 360 degrees

**Tilt Travel:** 90 degrees

**Speed:** MANUAL: 1 - 80° per second, Variable  
PRESET: Up to 400° per second, 200° per second average point to point

**Optical light loss:** CLEAR DOME: Negligible  
TINTED DOME: 1/2 f-stop

**Standard Accessories:** UNI-D18SO: UNI-AWM1, wall mount bracket  
UNI-CD6: clear lower dome  
UNI-D18FI: UNI-D12F1, flush mount kit

**Optional Accessories:** UNI-TCTL1: Variable speed keypad w/ 3 axis joystick  
UNI-TR1: Interface module (RS-422 to RS-232C) for HSR-1/2; YS-DX516/416, SVT-40E/168E/168/S480ES  
UNI-AWM1: Wall mount bracket  
UNI-SM1: Swing arm mount  
UNI-ARPMB1: Roof mount adapter  
UNI-ACAT1: Corner adapter  
UNI-ACF1: Parapet cap straight bracket  
UNI-ACC1: Parapet cap corner bracket  
UNI-APS11: Indoor, 24V AC x 8 power supply  
UNI-APS01: Outdoor 24V AC power supply  
UNI-AFCK1: Hard ceiling ring for indoor installations  
UNI-ADCK1: Drop ceiling panel  
UNI-ATBK1: T-bar ceiling kit  
UNI-DD1: RS-422 data distributor, 16 outputs

© 2001 Sony Electronics Inc. All rights reserved.

Reproduction in whole or in part without written permission is prohibited. Features and specifications are subject to change without notice.

All non-metric weights and measures are approximate.

Sony, Super HAD, UniDome, and UniTour are registered trademarks of Sony.

# SONY

Sony Security Systems  
Broadcast and Professional Company  
1 Sony Drive  
Park Ridge, New Jersey 07656-8003  
TEL: (201) 358-4954 • FAX: (201) 358-4927

Printed in U.S.A. 03/01 S-UNI-D18SO/D18FI

