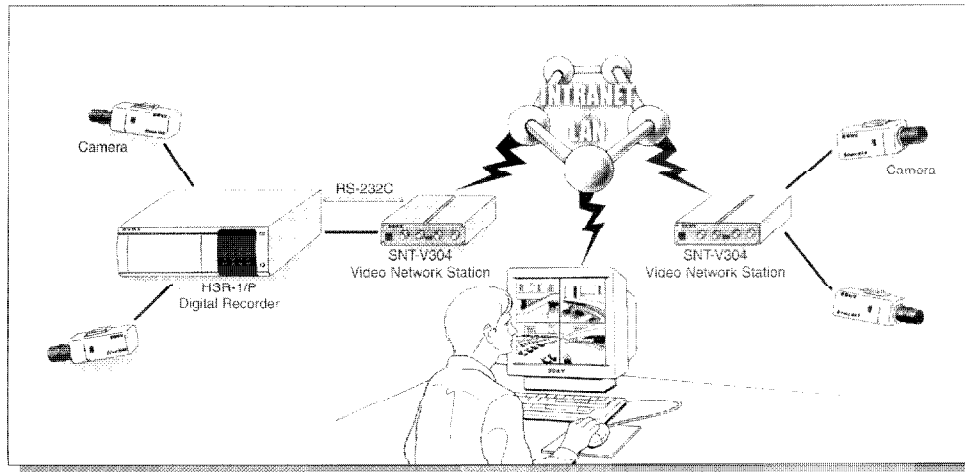
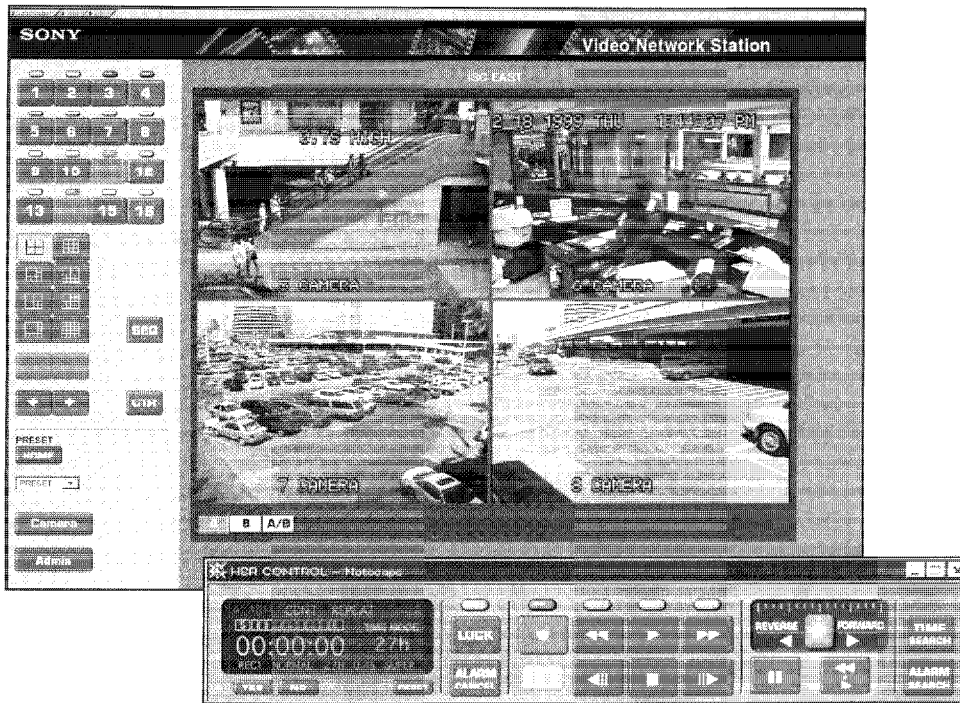


SONY®

Video Network Station **SNT-V304**



Preliminary

Sony Video Network Station

The Sony SNT-V304 Video Network Station transmits video images through an Ethernet instead of a coaxial cable by encoding NTSC or PAL video signals into JPEG format.

A popular web browser is all that is needed to monitor the images.

The SNT-V304 allows not only live camera viewing, but full control of the Sony HSR-1/P recorder as well.

With the Sony SNT-V304, your surveillance system has the potential to be more flexible and user friendly than ever before.

Main Features

Easy setup and use

With a direct IP connection there is no need for extra cables and wiring, as the SNT-V304 works on an existing LAN. Setup is made easy by simply assigning an IP address and connecting the camera. No special plug in software is necessary. The SNT-V304 provides an easy-to-operate GUI within your web browser.

High picture quality

With the latest processing technology and 10/100 Base-T transmission, near-real time motion video is possible.

Alarm activation

With four alarm inputs in total, once an alarm is detected an email message with an attached JPEG file showing the alarm event can be sent to a pre-determined IP address.

HSR-1/P recorder control

When connected to the Sony HSR-1/P recorder via the S-Video input, full control of the HSR-1/P including the ability to view all HSR-1/P split-screen combinations is possible. Setup of the HSR-1/P can also be made.

Various viewing modes

With up to four video inputs (four composite inputs or three composite + one S-Video input) a variety of display combinations are possible including quad, two-division split screen, and single screen.

Password protection

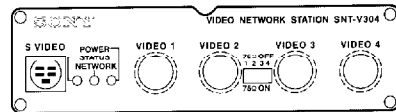
Up to three levels of password protection are available.

Specifications

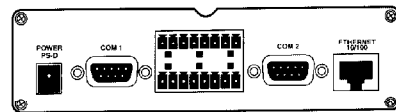
Video inputs	VBS/VS, BNC type (4), Auto sensing for NTSC or PAL S video, S terminal connector (1)*
Serial port	RS-232C, D-sub 9 pin (2)
Alarm inputs	(4)
Alarm output	(1)
Ethernet connector	RJ45 (1), 10/100 Base-T Ethernet Cable
Compression	JPEG
Transmission capability	NTSC Max 30 frame/sec (352 x 240 resolution) Max 10 frame/sec (704 x 480 resolution) Max 5 frame/sec (Quad, 4 x (320 x 240) resolution) PAL Max 25 frame/sec (352 x 288 resolution) Max 0 frame/sec (704 x 576 resolution) Max 5 frame/sec (Quad, 4 x (352 x 288) resolution)
Controllable devices	EVI-D30/31 HSR-1/P
Power requirements	AC 12V (with supplied AC adaptor)
Dimensions	145 (W) x 42 (H) x 220 (D) mm (5 3/4 x 1 11/16 x 8 3/4 inches)
Mass	0.8 kg (1 lb 12 oz)

*When using the S-Video input, composite video input 1 cannot be used, and vice versa

Distributed by



Front Panel



Rear Panel

© 1999 Sony Corporation. All rights reserved.
Reproduction in whole or in part without permission is prohibited.
Features and specifications are subject to change without notice.
All non-metric weights and measures are approximate.