

SONY®

Digital Powered Mixer

SRP-X500P



FEATURES

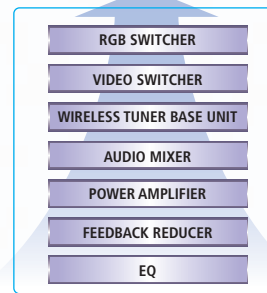
All-in-One Design

The SRP-X500P incorporates the functionality of seven presentation devices in a compact 3U high, 19-inch rack-mountable chassis, enabling modern presentations using a wide variety of A/V sources. Compared to purchasing these devices separately, the SRP-X500P presents a large reduction in system cost and eliminates time-consuming wiring and adjustments between such devices.

SRP-X500P

ALL IN ONE DESIGN

Digital Processing



Traditional System

An All-in-One Digital A/V Powered Mixer - Providing an Effective Solution for Smooth Multimedia Presentations

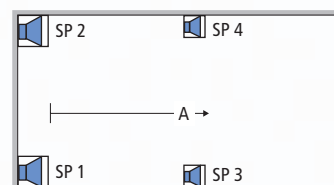
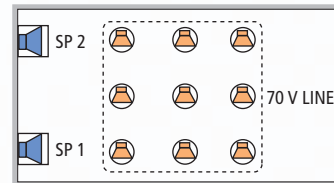
Sony introduced the SRP-X700P Digital Powered Mixer, a new "all-in-one" system concept for multimedia presentations. Designed to function as the central control hub for the integration of video, audio and PC media sources, the SRP-X700P allows for rich content and multimedia presentation systems to be easily configured, without integrating several separate A/V presentation devices.

Expanding upon this concept, Sony is now introducing the SRP-X500P, a cost-effective and ideal choice for use in small to mid-scale presentation systems - for conference rooms, corporate boardrooms and classrooms to houses of worship. Within its compact chassis the SRP-X500P has seven major presentation devices - including an RGB/video switcher, audio mixer, wireless tuner slots, sound processor, and digital power amplifier. For smooth control over presentations there is an easy-to-use front-panel layout, providing instant access controls for compatible Sony VCRs, DVD players, projectors and PCs. Plus, the built-in digital mixer offers important DSP functions, including a feedback reducer and equalizer for high-quality audio.

Eliminating complicated operations, cumbersome installation procedures, and complex adjustments of A/V parameters for optimized visuals and sound, the SRP-X500P is an efficient A/V presentation system for conveying your messages as effectively as possible.

Nine System Presets

Setting up audio parameters of a presentation system can be a difficult task, especially to deliver high-clarity audio to all areas of the venue. The SRP-X500P offers nine factory-default system settings in its memory, enabling more efficient audio adjustment. Speaker system configurations are also included in these settings, allowing quick setup of the audio system by recalling the one best suited for the venue.



High-Quality Digital Sound

The SRP-X500P is equipped with a number of digital signal sound processing functions including Auto Gain Control (AGC), equalizer, compressor and feedback reducer, helping to bring professional sound quality into multimedia presentations. Each microphone input channel integrates a digital feedback reduction function. At the touch of a button, the audio frequency in which feedback is likely to occur, is detected and suppressed, reducing unwanted microphone feedback.*

Consequently operators can raise the amplifier's volume without concern over microphone howling. The SRP-X500P also incorporates an A/D and D/A converter with a 24-bit, 48-kHz sampling frequency for high-quality digital sound. The four-channel digital amplifier also maximizes the sound quality of the SRP-X500P.



* When a microphone position is changed, the feedback reduction function has to be set again.

Integrated Wireless Tuner Unit Slots

The SRP-X500P can accommodate two optional wireless tuner units, selectable from the Sony UWP-X series or the WRU-806A/806B, making it simple to establish a high-quality wireless microphone system for the presentation.



Comprehensive Remote Control

For integrated control of the presentation system the SRP-X500P offers a variety of control interfaces - to control peripheral equipment or to be controlled from an external control system. These include RS-232C, Control S and PARALLEL ports.

An optional RM-AV3000 Series Wireless Remote Commander® also provides basic control functions for both the SRP-X500P and connected projector.

Remote Control of the SRP-X500P:

- RS-232C (REMOTE): Various settings of the SRP-X500P can be altered from a PC running the supplied SRP-X500P Manager. Third-party system controllers can also be connected to this port to control the SRP-X500P.

Remote Control of Peripheral Equipment From the SRP-X500P

- RS-232C (PROJECTOR CONTROL): For remote control of Power ON/STANDBY and input selection of Sony projectors.
- Control S (PROJECTOR CONTROL): For remote control of Power ON/STANDBY and input selection of the Sony LCD Data Projector VPL-PX15.

Remote Control of Peripheral Equipment From an External Parallel Interface Box

- PARALLEL (REMOTE): For remote control of peripheral devices such as video screens (up/down), window curtains (open/close), and lighting (on/off).



Front Panel

Wireless Control of the SRP-X500P or Peripheral Equipments

Using the optional RM-AV3000 Series Remote Commander, frequently accessed operations of the SRP-X500P and connected projector can be wirelessly controlled:

SRP-X500P

- AV/RGB selection
- Master volume adjustment
- Master volume muting

Projector

- Projector Power ON/STANDBY

Versatile Interfaces

The SRP-X500P offers an array of video, PC, and audio I/Os. In addition to conventional composite and component video inputs, it supports computer RGB input and output, both of which accommodate up to SXGA resolution. As for audio, four microphone inputs and two stereo line inputs are available, each which can be freely assigned to the four audio outputs.

Built-in Four-Channel Digital Power Amplifier

The SRP-X500P is equipped with a four-channel digital power amplifier that can be switched between high and low impedance modes to suit various room types.

Low impedance mode:

90 W + 90 W + 50 W + 50 W (4 Ω, 8 Ω)*

High impedance (70 V line) mode:

90 W + 90 W (4 Ω, 8 Ω)* + 60 W (82 Ω)

* The same power rating can be acquired for both 8 Ω and 4 Ω speaker impedance. Connect the speakers so the total speaker impedance is 4 Ω or higher.

PC Control With Easy-to-Use GUI

For system setup and operation from a PC, the SRP-X500P is supplied with the Windows-based SRP-X500P Manager software.* From its easy-to-use GUI, operators can control detailed settings such as the equalizer, AGC, and compressor, before the presentation.

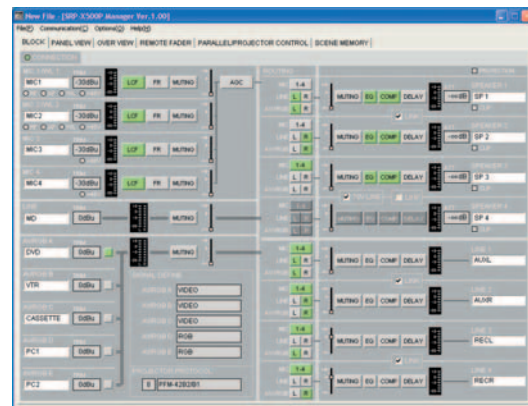
* System requirements:

OS: Microsoft® Windows® Me, 2000 Professional, XP Professional or XP Home Edition

CPU: Intel® Celeron® 400 MHz or higher

RAM: 128 MB or greater

Available hard disk space: 20 MB or higher

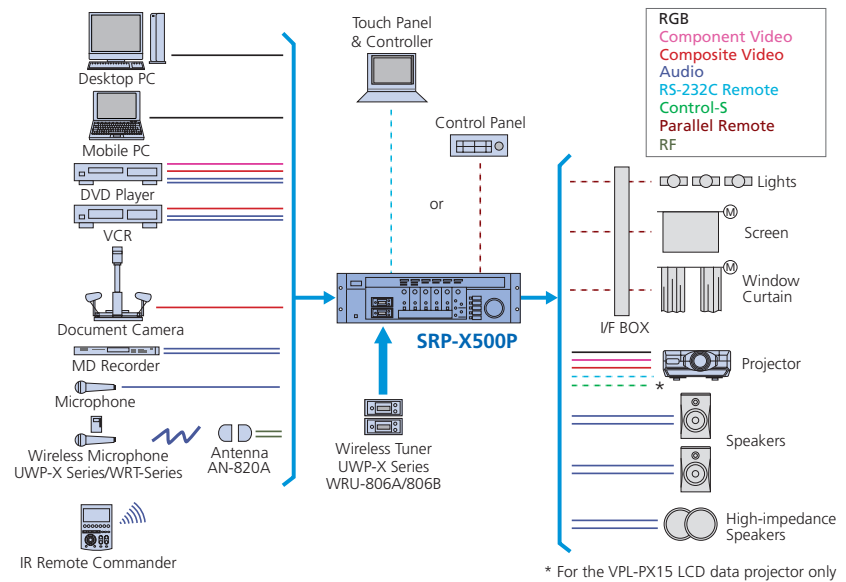


SRP-X500P Manager Block Screen

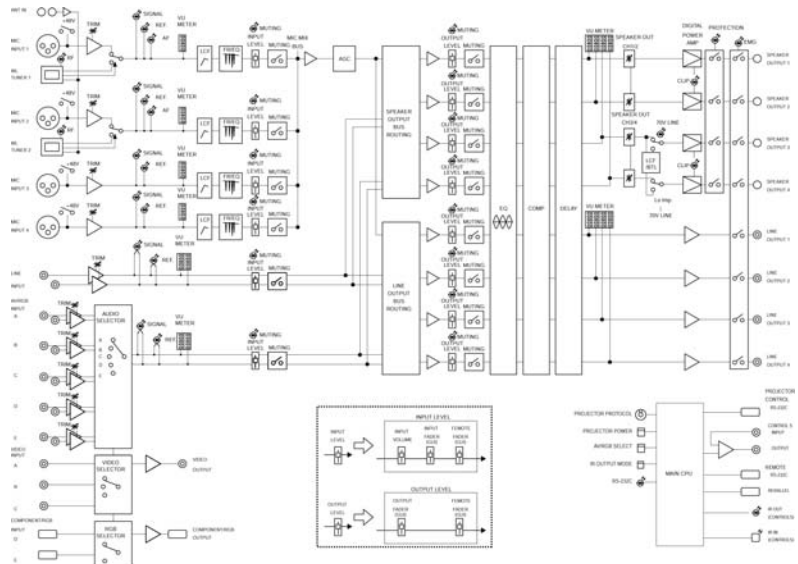


Rear Panel

SYSTEM CONFIGURATIONS



BLOCK DIAGRAM



OPTIONAL ACCESSORIES



AN-820A
UHF Antenna



WRU-806A/806B
UHF Synthesized Tuner Unit



UWP-X1/X2
UHF Wireless Microphone Package (photo shows a tuner unit included in the UWP-X Series package)



RM-AV3000 Series
Remote Commander®

SPECIFICATIONS

SRP-X500P	
General	
Power requirements	AC 120 V, 60 Hz (for the U.S.A and Canada) AC 220 V, 50/60 Hz (for China) AC 230 V, 50/60 Hz (for other countries)
Power consumption	120 W
Operating temperature	+32 to +104 °F (0 to +40 °C)
Storage temperature	-4 to +140 °F (-20 to +60 °C)
Dimensions (W x H x D)	19 x 5 1/4 x 14 inches
Weight	Approx. 26 lb 3 oz (12 kg)
Supplied accessories	AC power cord (1), operation manual (1), foot (4), SRP-X500P Manager Software CD-ROM (1), antenna (2)

Electrical characteristics	
Composite video	
Color system	NTSC/PAL/SECAM
Frequency response	50 Hz to 10 MHz
Level	1.0 Vp-p (75 Ω)

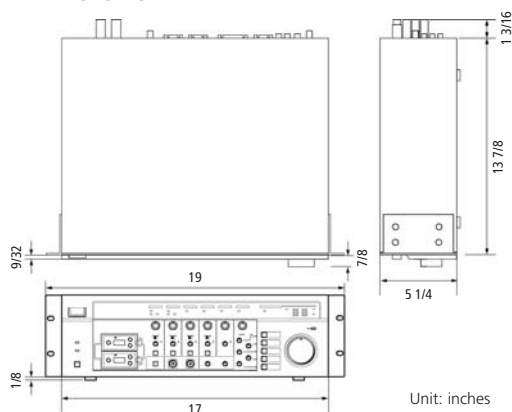
Component video	
Color system	NTSC/PAL
Frequency response	50 Hz to 150 MHz
Level	Y: 1.0 Vp-p (75 Ω), R-Y/B-Y: 0.7 Vp-p (75 Ω)

RGB	
Frequency response	50 Hz to 150 MHz
Resolution	SXGA: 1280 x 1024 pixels, 60 Hz, supporting 480p/1080i
Level	R/G/B: 0.7 Vp-p (75 Ω), Sync/HD, VD: 1 to 5 Vp-p (47 kΩ) sync positive/negative

Audio (analog)	
Frequency response	Line input to Line output: 20 Hz to 20 kHz ±0.5 dB (1 kHz reference)
T.H.D.	Line input to Line output: Less than 0.01% (1 kHz)
S/N ratio	Line input to Line output: More than 94 dB (IHF A)
Crosstalk	Line input to Line output: Less than -80 dB (1 kHz)

Others	
Antenna in (a/b)	BNC x2, DC +9 V out
Microphone power supply	DC +48 V, MIC 1 to 4 inputs

DIMENSIONS



Audio inputs					
Input	Connector	Circuit	Channel	Reference/peak level	Impedance
MIC/WL 1, 2	XLR-3-31 type	Balanced	Mono	-60 to -30 dBu/-37 to -7 dBu	More than 2.2 kΩ
MIC 3, 4	XLR-3-31 type	Balanced	Mono	-60 to -30 dBu/-37 to -7 dBu	More than 2.2 kΩ
LINE	Phono x 2	Unbalanced	Stereo	-30 to 0 dBu/+10 dBu	More than 10 kΩ
AV/RGB (A to E)	Phono x 2	Unbalanced	Stereo	-30 to 0 dBu/+10 dBu	More than 10 kΩ

Audio output					
Output	Connector	Circuit	Channel	Reference/peak level	Load impedance
LINE 1 to 4	Phono x 1	Unbalanced	Mono	-5 dBu/+15 dBu	More than 10 kΩ

Speaker outputs			
Output	Connector	Speaker impedance	Rated power
CH1/CH2	Screw-type binding terminal x 4	4 to 16 Ω	90 W (4 Ω, 8 Ω)*
CH3/CH4 (70 V LINE)	Screw-type binding terminal x 4	4 to 16 Ω (at low impedance) 82 to 10 kΩ (at 70 V LINE)	50 W (4 Ω, 8 Ω)* 60 W (82 Ω)

* The same power rating can be acquired for both 8 Ω and 4 Ω speaker impedance. Connect the speakers so the total speaker impedance is 4 Ω or higher.

AV/RGB inputs		
Input	Connector	Signal type
VIDEO (A to C)	Phono x 1	Composite
COMPONENT/RGB (D, E)	D-sub 15-pin	Component/RGB

AV/RGB outputs		
Output	Connector	Signal type
VIDEO	Phono x 1	Composite
COMPONENT/RGB	D-sub 15-pin	Component/RGB

Remote control terminal			
RS-232C ports	Connector	Function	
PROJECTOR CONTROL	D-sub 9-pin (male)	Input selection, Power on/standby	
REMOTE	D-sub 9-pin (male)	Setting of SRP-X500P audio and switch functions from a PC running the SRP-X500P Manager software	
Parallel I/O ports	Connector	Function	Type
PARALLEL IN	D-sub 25 pin (female)	AV selection, Power on/off, Scene recall, Volume, Volume up/down, Muting	Make-contact CMOS level, active low
PARALLEL OUT		Output status of Parallel input function	Open collector
Control-S ports	Connector	Function	
PROJECTOR IN*	Mini jack	For the connection of projector remote commander	
PROJECTOR OUT*	Mini jack	Input selection, Power on/standby	

* For the VPL-PX15 LCD data projector only

SONY®

Sony Electronics Inc.
1 Sony Drive
Park Ridge, NJ 07656
www.sony.com/professional

©2005 Sony Electronics, Inc. All rights reserved.
Reproduction in whole or in part without written permission is prohibited.
Features, design and specifications are subject to change without notice.
All non-metric weight and measurements are approximate.
Sony and Remote Commander are registered trademarks of Sony.
All other trademarks are property of their respective owners.

Use of Sony wireless devices in the United States of America is regulated by the Federal Communications Commission as described in Parts 15 and 74 of the FCC regulations. Users authorized thereby are required to obtain an appropriate license.