

SONY®

POWERED MIXER
SRP-X351P

The SRP-X351P Powered Mixer contains all the features for a wide range of applications—simply add the loudspeakers. Easy to operate, it provides cost-effective A/V facilities in conference, training, presentation and similar environments. With highly flexible audio and video connections, 170 W per channel (4Ω), 125 W per channel (8Ω), stereo power amplifier and comprehensive remote control by both RS-232C and infrared commander, the SRP-X351P is ideal for new installations or for upgrading existing A/V systems.



Main Features

1. Four Microphone Inputs

Four balanced microphone inputs are provided via rear-panel XLR connectors.

The fourth input is also accessible via a 1/4-inch jack on the front panel. A sharp cut-off LF filter and a Signal Present LED are provided on all four inputs. 48 V phantom powering is available on the XLR connectors.

2. Three Stereo Channels

Three stereo channels are included, with line level inputs.

Channel 3 has four input connections, with input selection made by the four-way A/V selector.

3. Audio Outputs

A new feature is the Mic Group bus. A typical use of this feature is to route selected microphones only to the ceiling speakers of a PA system. An insertion point is provided for an optional equalizer, dynamics control unit or feedback reducer.

An Effects Bus and Stereo Record Bus are included. The Stereo Record Bus feeds both the power amplifiers and the Record output via an equalizer and an insertion point for external signal processing. This means that the stereo Record output can feed external power amplifiers with the same signal as the internal power amplifiers.

4. Video I/O Switching

Four sets of video and S-video inputs are included. Any one set of inputs is selected by the four-way A/V selector and routed to two pairs of outputs, one associated with the stereo Master output and one with the stereo Record output.

5. Optional Wireless Microphone Receivers

Mounting slots are built-in to the rear of the SRP-X351P for two optional Sony Freedom Series™ WRU-801A or WRU-806A Wireless Microphone Receivers. Microphone channels 1 and 2 are selectable to the outputs of these receivers.

9 V DC is provided on the two antenna connectors to power optional Sony AN-820A omni-directional active antennas.

6. Comprehensive Remote Control Features

RS-232C and Sony Control-S remote control connections ports are provided on the rear of the SRP-X351P. A/V Input Selection and Master Volume can be controlled via these ports, or by using the supplied SRP-351RM infrared wireless remote commander. The power amplifier and Record outputs can be muted in the same way.

7. 170W per Channel Power Output

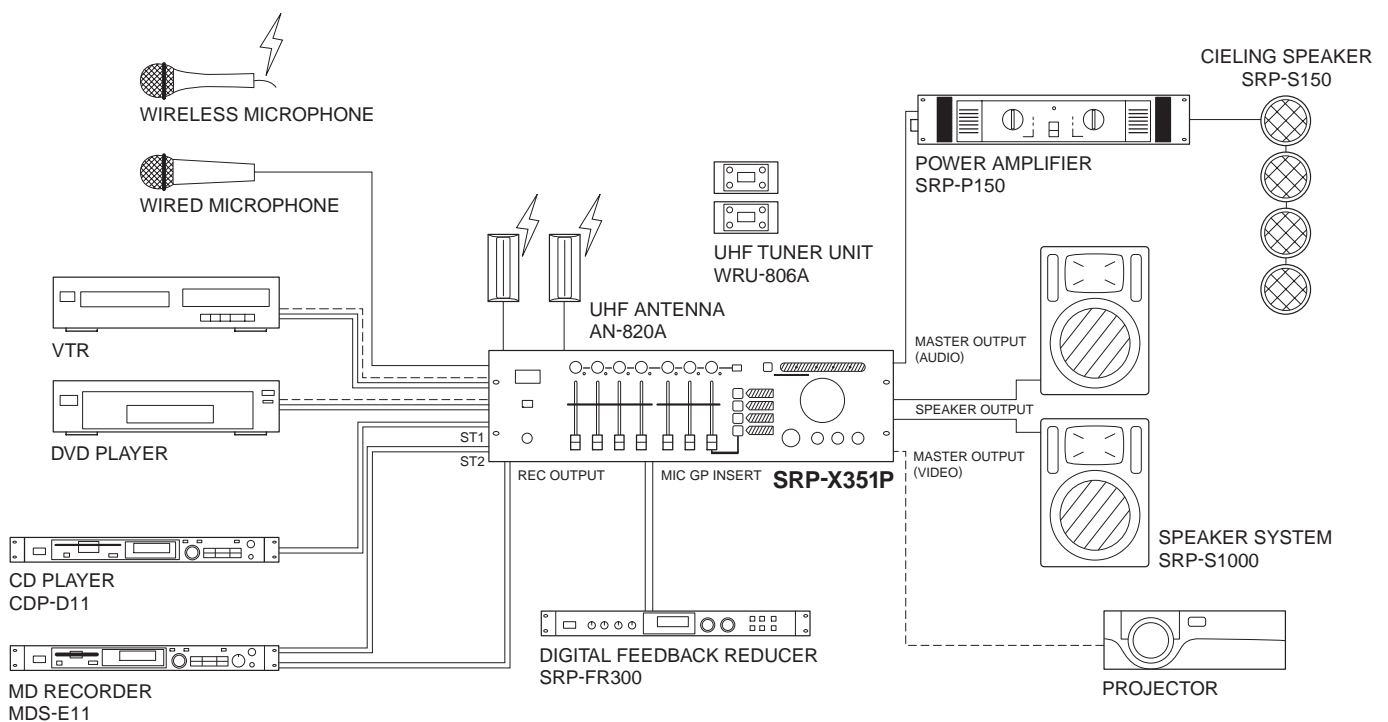
The SRP-X351P includes a low-distortion stereo power amplifier that outputs 170 W per channel into 4 ohms.

A loudspeaker protection circuit and Clip indication are provided.

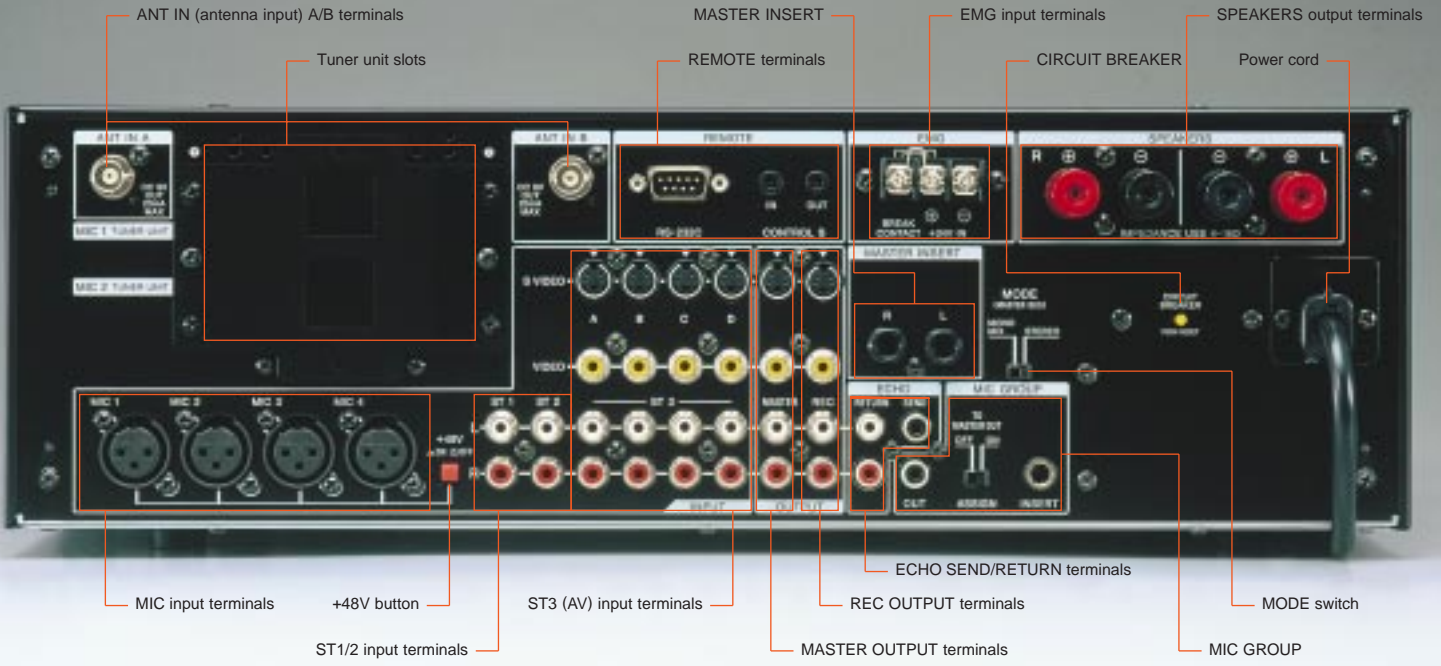
8. Rack Mountable

The SRP-X351P mounts in a 19-inch EIA standard rack and is 3U high.

System



Names and Functions Rear Panel



Wireless remote commander
SRP-351RM



Installed tuners

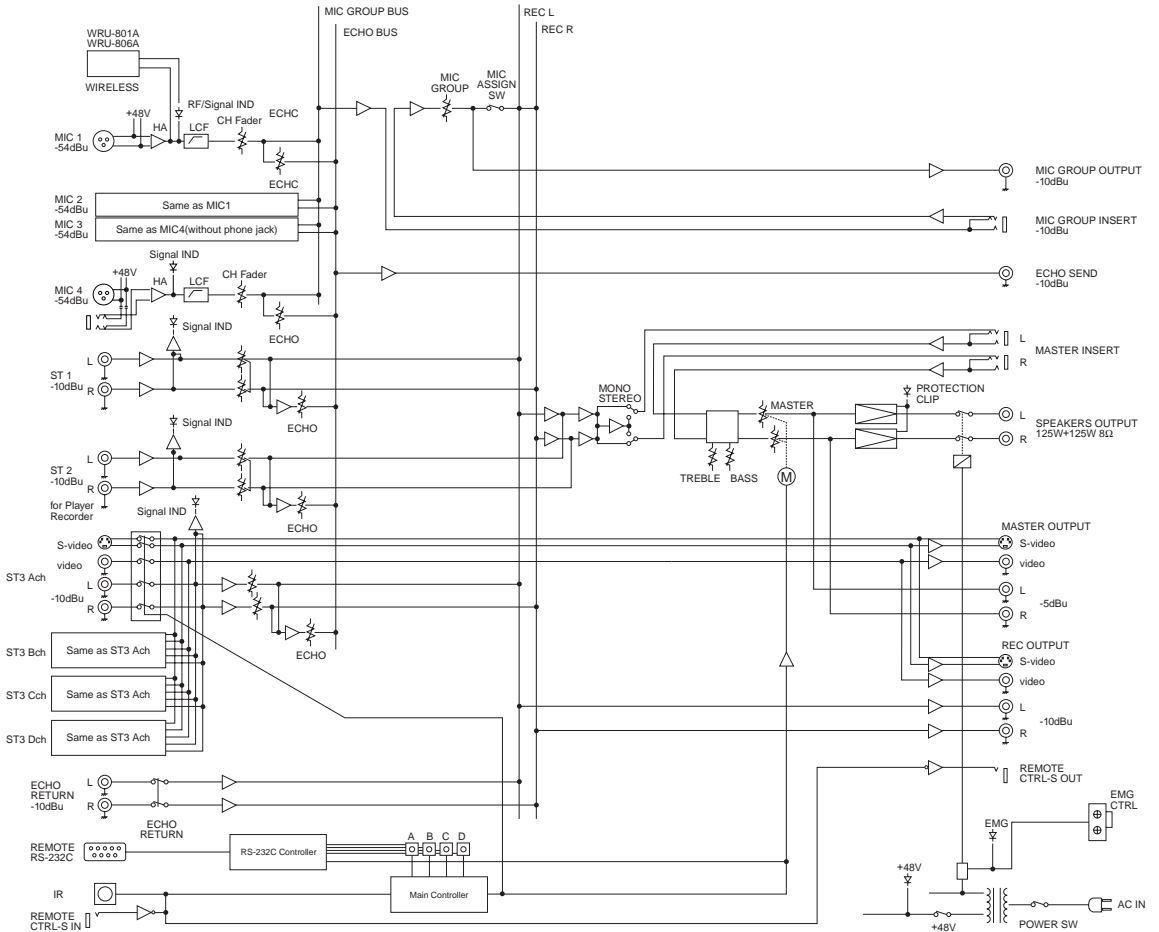


Tuner unit **WRU-806A**



Tuner unit **WRU-801A**

Block Diagram





Specifications

AUDIO INPUT/OUTPUT

| | Type of connector | Type of circuit | No. of channels | Reference level | Max. level | Impedance (Load impedance) |
|-----------------------------|-----------------------------|-----------------|-----------------|-----------------|------------|--|
| MIC input 1-4 (Rear) | XLR-3-31 type | Balanced | 4 | -54dBu | -24dBu | 2.2kΩ |
| MIC input 4 (Front) | 1/4-inch jack | Balanced | 1 | -54dBu | -24dBu | 2.2kΩ |
| ST1 input | Phono | Unbalanced | 1(ST) | -10dBu | +10dBu | 20kΩ |
| ST2 input | Phono | Unbalanced | 1(ST) | -10dBu | +10dBu | 20kΩ |
| ST3 input (ABCD) | Phono | Unbalanced | 4(ST) | -10dBu | +10dBu | 20kΩ |
| Echo return input | Phono | Unbalanced | 1(ST) | -10dBu | +10dBu | 20kΩ |
| MIC group output | Phono | Unbalanced | 1(ST) | -10dBu | +10dBu | (More than 10kΩ) |
| Echo send output | Phono | Unbalanced | 1(ST) | -10dBu | +10dBu | (More than 10kΩ) |
| Master output | Phono | Unbalanced | 1(ST) | -5dBu | +15dBu | (More than 10kΩ) |
| Rec output | Phono | Unbalanced | 1(ST) | -10dBu | +10dBu | (More than 10kΩ) |
| Speakers output | Screw type binding terminal | | 1(ST) | | | 125W+125W (8Ω 1kHz THD 0.1%) 170W+170W (4Ω 1kHz THD 0.1%) |

INSERT INPUT/OUTPUT

| | Type of connector | Type of circuit | No. of channels | Reference level | Impedance (Load Impedance) |
|----------------------|---------------------------------------|-----------------|-----------------|-------------------------------|----------------------------|
| Master insert | Phone (Tip:OUT Ring:IN Sleeve:GND) | Unbalanced | 2 | Input -10dBu Output -10dBu | 20kΩ (More than 10kΩ) |
| MIC insert | Phone (Tip:OUT Ring:IN Sleeve:GND) | Unbalanced | 1 | Input -10dBu Output -10dBu | 20kΩ (More than 10kΩ) |

VIDEO INPUT/OUTPUT

| | Type of Video | Type of connector | No. of channels |
|-------------------------|---------------|-------------------|-----------------|
| ST3 input (ABCD) | S-VIDEO | 4-pin mini DIN | 4 |
| | VIDEO | Phono | 4 |
| Master output | S-VIDEO | 4-pin mini DIN | 2 |
| Rec output | VIDEO | Phono | 2 |

S-Video and Video (composite) signal are separated

CONTROL TERMINAL

| | Type of connector | No. of channels | |
|-------------------------|-------------------|-----------------|------------------------|
| RS-232C terminal | D-sub 9pin male | 1 | |
| Control-S input | Mini | 1 | |
| Control-S output | Mini | 1 | Through out from input |
| EMG control | Screw type | 1 | 24V signal control |

ELECTRICAL CHARACTERISTICS (AUDIO)

| | Conditions | Standards |
|---------------------------|--------------------------------------|-----------------|
| Frequency response | 20-20kHz, 1kHz reference Master out | +0.5, -1dB |
| THD | EQ FLAT, 20Hz-20kHz input | Less than 0.05% |
| S/N ratio | ST in, input short, IHF-A | More than 85dB |
| Residual noise | Master Vol 0, IHF-A, speakers output | Less than 100μV |
| Crosstalk | 1kHz, between L-R channels | Less than -60dB |
| | 1kHz, between input channels | Less than -80dB |
| Tone control | Treble 10kHz (Shelving type) | +/-12dB |
| | Bass 60Hz (peaking type) | +/-12dB |

ELECTRICAL CHARACTERISTICS (VIDEO/S-VIDEO)

| | Conditions | Standards |
|---------------------------|-----------------------------|-----------------|
| Frequency response | 60-10MHz, 3.58MHz reference | +0.5, -1dB |
| S/N ratio | 100kHz HPF 5MHz LPF | More than 65dB |
| Crosstalk | 3.58MHz | Less than -50dB |

OTHER TERMINALS

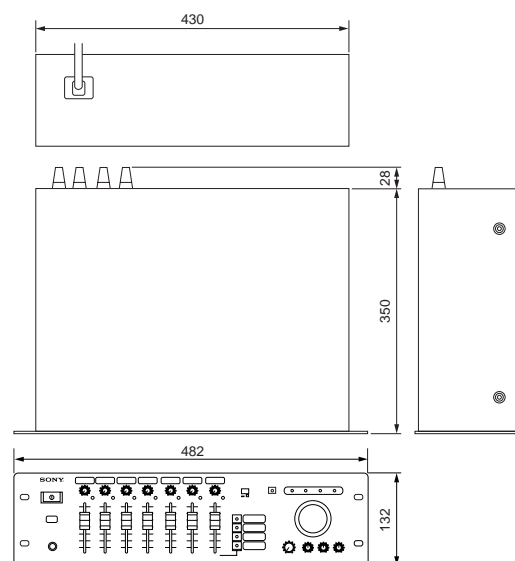
| | |
|-----------------------------|--------------------------------|
| Antenna in | BNC, 2-CH, DC 9V out |
| Phantom power supply | DC 48V, MIC 1-4 XLR connectors |

GENERAL

| | |
|---------------------------|-------------------------------------|
| Power consumption | 400W |
| Power requirements | AC 120V, 230V (50/60Hz) |
| Dimensions | 482(W)x132(H)x350(D)mm |
| Mass | Approx. 15kg |
| Supplied accessory | Wireless remote commander SRP-351RM |

OdBu=0.775Vrms

Dimensions (unit: mm)



©1999 Sony Corporation. All rights reserved.
 Reproduction in whole or in part without written permission is prohibited.
 Features and specifications are subject to change without notice.
 All non-metric mass and measures are approximate.
 Sony is a registered trademark of Sony Corporation.
 All other trademarks are property of their respective owners.

Distributed by