

SONY



2001 HOME NETWORK PRODUCTS
DIGITAL RECORDERS
MINIDISC/RECORDABLE CD/DAT

SONY MAKES DIGITAL
RECORDING FLEXIBLE,
FAST AND FUN

Which Sony digital recorder¹ is right for you? It all depends on who you are. If you love Compact Discs as much as we do, choose the RCD-W1 CD-R/RW high-speed dubbing recorder. If you're into studio-quality recording of live music, you're a candidate for Sony's DTC-ZE700 Digital Audio Tape recorder. And if you want your music ultra-portable, affordable and repeatedly re-recordable, Sony MiniDisc is the ideal choice. It's perfect for recording music from the Internet. And now you can record MiniDiscs at 4X speed² — to capture an hour of music in only 15 minutes!

4X HIGH SPEED CD-TO-MD RECORDING. If you like simplicity, you'll appreciate recording music from CD to MD. And if you like speed, you'll love Sony's high-speed CD player/MD recorders. Just load the CD into one slot. Load the MD into another and hit Record. Your music zips onto MiniDisc at 4X normal speed!² You'll record a three-minute song in just 45 seconds. Or a 74-minute CD in less than 20 minutes! It's fast, it's easy and it's oh-so-cool. And if you prefer to listen to your music as you record it, real-time recording is also an option.

PC→MD: RECORD FROM THE NET. Download songs from the Internet. Rip your CDs. Then drag and drop the results to MiniDisc! Sony enables you to perform point-and-click editing. And add titles from the comfort of your PC keyboard. Simply create your playlist, press Record and come back later to enjoy your MD! Sony's PCLK-MN10 PC Link Kit brings these capabilities to Windows® PCs and compatible Sony MD recorders. Or choose Sony's MDS-PC3, with the PC Link Kit included!

MDLP (LONG PLAY): OVER 5 HOURS ON ONE MINIDISC! First, Sony upgraded the recordable MiniDiscs from 74 minutes to 80. Now we've gone overboard. Our Long Play mode enables you to capture up to four times as much stereo music on one disc! That's over 5 hours of music on one 80-minute MD. And the discs play back on any Long Play capable MD player. The LP2 mode captures up to 2 hours, 40 minutes on a single, miniature MiniDisc. LP4 mode captures up to 5 hours and 20 minutes of Techno, Hip-Hop, Blues or Pop! It's perfect for parties. And it's ideal for music you've downloaded from the Internet — or for archiving your LPs.

SCALE FACTOR EDIT. Suppose you have a mix of tracks recorded from CD and FM and you recorded the FM tracks too loud. Scale Factor Edit lets you adjust the volume of a track, without touching the music itself. It makes for more professional results. You can also use Scale Factor Edit to create professional-sounding fade-outs and fade-ins — even after you've made a recording. This post-record edit capability is only available on MiniDisc recorders!



MDLP

TIME MACHINE RECORDING. Suppose you're listening to the radio and a hot new song comes on. With Time Machine recording, you can hit the Record button up to six seconds late – and still capture every note! The secret? The recorder stores the last six seconds of music in buffer memory.

THAT MIRACULOUS MINIDISC. It's easy to see why MiniDisc is so popular. It's so small, yet it carries up to 80 minutes of music (Standard Play) and over 5 hours of music (Long Play). Shock Resistant Memory means you can play MD anywhere. Magneto optical recording means you can record, erase and re-record until you drop. With one million re-record cycles, your MDs can take it longer than you can!

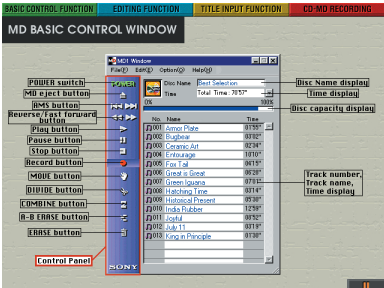
EDITING PERSONALIZES YOUR MUSIC. With MiniDisc, you can Move, Divide and Combine tracks – shaping your music even after you've recorded it. Thanks to non-linear recording and playback, you're free to combine Track 1 with Track 5, for example, for seamless, uninterrupted play. You can also perform true editing functions like A-B Erase. There's even an Un-Do Edit that lets you change your last decision!

NAME THAT TUNE: DISC AND TRACK TITLES. MiniDiscs can save disc name, track names and artist names! Selected models enable you to plug in a PC keyboard and type in your names. Scrolling displays mean your names aren't limited to just a few characters. And with CD TEXT™ and Custom File™ transfer, this information is automatically imported from compatible Sony CD players.

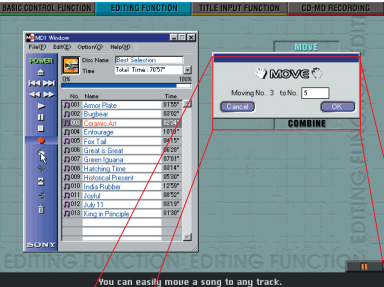
THE SOUND OF ATRAC DSP TYPE "R." At the heart of MiniDisc audio technology is Adaptive Transform Acoustic Coding, or ATRAC. It's the process that enables Sony to put 80 minutes of digital stereo sound on a minuscule 2-1/2-inch disc! Sony's ATRAC DSP Type "R" uses an added stage that checks the accuracy of bit allocation. Bits are then re-allocated to refine the coding. Together with superb processing accuracy, the bit-reallocation yields music that's even more faithful to the original. You'll hear smoother, better-articulated, more clearly delineated sound.

CUSTOMIZING THE COMPACT DISC:
CD-R/CD-RW RECORDING. Burn your own CDs with the Sony RCD-W1 CD-Recordable/CD-ReWritable high speed Dubbing Recorder.¹ This dual-drive recorder has a CD player in the left-hand drive and a CD-R/RW recorder/player in the right. So you can record custom compilation CDs for playback in the home, on the road or on the go! Imagine a custom dance CD for parties. A hard-driving CD for your road trip. A CD of uptempo tunes for your workout. Features like 4X high-speed dubbing² and One-Touch Synchro Start/Record makes recording fast and easy.

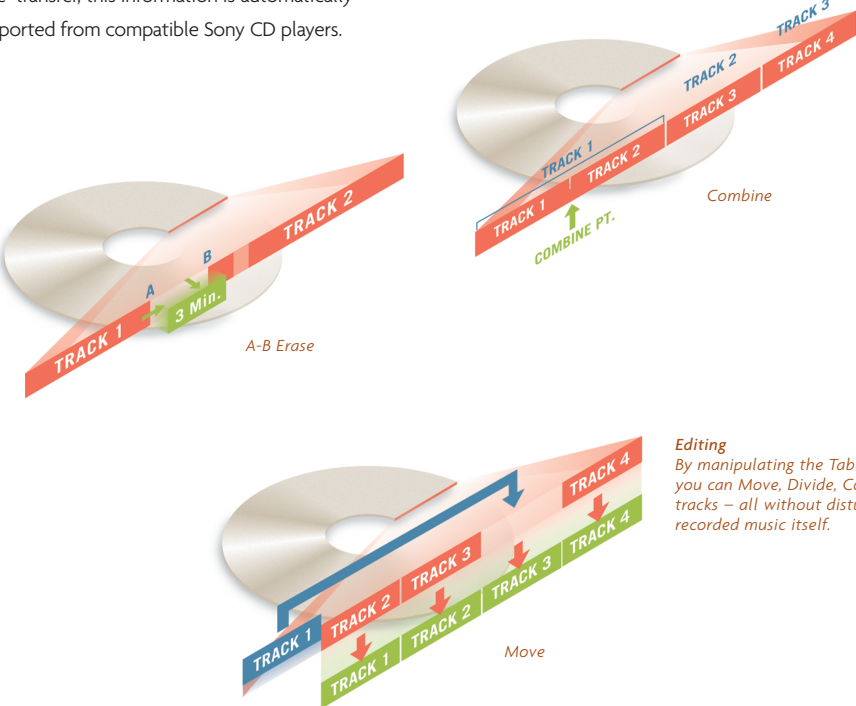
LIFE AT THE TOP: DIGITAL AUDIO TAPE. Go to any recording studio. Whether they do country or rock, motion picture sound tracks or TV commercial production, chances are they have Digital Audio Tape (DAT) recorders. DAT is the two-track machine of choice in so many recording studios. And you can enjoy DAT at home with the Sony DTC-ZE700.



Basic Control Function



Edit Function



Editing
By manipulating the Table of Contents, you can Move, Divide, Combine and Erase tracks – all without disturbing the recorded music itself.

MXD-D5C CD CHANGER/MINIDISC RECORDER

- ▲ 5-CD changer integrated with 1-MD recorder¹
- ▲ Space-saving elevator style changer mechanism
- High-speed 4X CD-to-MD recording²
- MD Long Play (MDLP) modes; up to four times normal capacity
- ▲ PC keyboard input for disc and track names
- Scale Factor Edit
- Two-line fluorescent display shows title information for both CD and MD
- CD TEXT™ and Custom File™ transfer
- Playback pitch control
- Optical digital input
- Headphone output with volume control
- ▲ 24-Bit analog-to-digital converter
- Hybrid Pulse digital-to-analog converter
- Remote Commander® remote control



MXD-D40 CD PLAYER/MINIDISC RECORDER

- ▲ CD player integrated with MD recorder¹
- ▲ High-speed 4X CD-to-MD recording²
- MD Long Play (MDLP) modes; up to four times normal capacity
- Scale Factor Edit
- Two-line fluorescent display shows title information for both CD and MD
- CD TEXT and Custom File transfer via Control A-1 II
- Playback pitch control
- Digital record level
- Optical digital input
- Headphone output with volume control
- 20-Bit analog-to-digital converter
- Hybrid Pulse digital-to-analog converter
- Compatible with optional PCLK-MN10 PC Link Kit
- Remote Commander remote control



MDS-JB940 MINIDISC RECORDER

- ▲ 24-bit Variable Coefficient digital filter
- ▲ S-TACT circuitry
- ▲ Sony MegaStorage® CD changer control
- ▲ CD TEXT and Custom File transfer via Control A-1 II
- ▲ Current Pulse D/A Converter
- ATRAC Type "R" Digital Signal Processing
- MD Long Play (MDLP) modes; up to four times normal capacity
- ▲ Scale Factor Edit
- ▲ Playback pitch control
- Digital record level¹
- ▲ Two optical digital inputs, one output
- ▲ Coaxial digital input and output
- ▲ PC keyboard input for disc and track names
- ▲ Anti-resonant aluminum front panel; slanted PC board
- ▲ R-Core power transformer
- ▲ Headphone output with volume control
- Remote Commander remote control



MDS-JE470 MINIDISC RECORDER

- ATRAC Type "R" Digital Signal Processing
- MD Long Play (MDLP) modes; up to four times normal capacity
- Hybrid Pulse digital-to-analog converter
- 24-Bit analog-to-digital converter
- Wide Bit Stream technology
- Time Machine recording with 6-second buffer memory¹
- Jog Dial™ control for track selection, text entry
- Digital Record Level Control
- Optical digital input
- Timer standby recording
- Sampling rate converter
- Compatible with optional PCLK-MN10 PC Link Kit
- Remote Commander remote control



MDS-PC3 MINIDISC RECORDER

- Software included to download Internet music, rip CDs from your PC and record to MD¹
- Manage audio files on PC hard drive
- Supplied PCLK-MN10 PC Link Kit
- Connects to Windows® PC via Universal Serial Bus (USB)
- Drag and drop tracks from CD to MD
- Track titling via PC keyboard
- ATRAC Type "R" Digital Signal Processing
- MD Long Play (MDLP) modes; up to four times normal capacity
- MD label printing software
- CD TEXT and Custom File transfer via Control A-1 II
- Remote Commander remote control



PCLK-MN10 PC LINK KIT

- Software and accessory package to download Internet music, rip CDs from your PC and record to compatible MD recorders¹
- Manage audio files on PC hard drive
- Connects to Windows PC via Universal Serial Bus (USB)
- Supports ATRAC Standard Play and ATRAC3 (MDLP) Long Play modes (LP2/LP4)
- Connects to Sony MXD-D40, MDS-JE470 and MDS-PC3 via dedicated miniplug and Control A1 interface
- Software supplied
- MD label printing utility
- Compatible with Windows 2000/98 and Windows Me™



RCD-W1 CD-R/RW HIGH-SPEED DUBBING RECORDER

- Records CD-Recordable and CD-ReWritable discs¹
- Plays CD, CD-R, CD-RW
- Dual deck with 4X high speed dubbing²
- 24-bit digital-to-analog converter
- 20-bit analog-to-digital converter
- Dual independent audio outputs
- Simultaneous twin playback
- Audio inputs for recording from external sources
- One-Touch Synchro Start/Record
- Optical digital input and output
- Gold-plated analog outputs
- Headphone jack with volume control
- 32-Step Program play
- 2-Mode Repeat play
- Fluorescent display
- Remote Commander remote control



DTC-ZE700 DIGITAL AUDIO TAPE RECORDER

- Super Bit Mapping® technology
- Advanced pulse D/A converter
- SCORE digital filter
- Anti-resonant Mid-Ship drive
- Sony 3 Motor Mechanism
- Optical and coaxial digital inputs
- Optical digital output
- 44.1 kHz analog recording capability¹
- Quick Loading
- Long Record/Play modes¹
- 200/400 times high speed search
- 50 second rewind time
- Automatic ID subcodes
- Manual ID subcodes
- Auto Renumber
- Blank Search
- Two repeat modes
- 2-way time display
- 23 segment peak level meters
- Digital peak margin display
- Message function
- Informative Dot matrix display
- Serial Copy Management System (SCMS) Encoding
- Remote Commander wireless remote control



TECHNOLOGIES	MXD-D5C	MXD-D40	MDS-JB940	MDS-JE470	MDS-PC3
Wide Bit Stream technology	Yes	Yes	Yes	Yes	Yes
ATrac circuitry	V. 4.5	V. 4.5	Type R	Type R	Type R
MD Long Play (MDLP) modes	2x, 4x	2x, 4x	2x, 4x	2x, 4x	2x, 4x
8x Digital filter	Yes	Yes	Yes	Yes	Yes
24-bit Variable Coefficient digital filter	-	-	Yes	-	-
S-TACT circuitry	-	-	Yes	-	-
D/A converter	Hybrid Pulse	Hybrid Pulse	Current Pulse	Hybrid Pulse	Hybrid Pulse
A/D converter	24-bit	20-bit	24-bit	24-bit	24-bit
Transformer	El Core	El Core	R-Core	El Core	R-Core
Insulator feet	Yes	-	Yes	Yes	-
Aluminum front panel	-	-	Yes	-	-
Gold-plated inputs/outputs	-	Yes	Yes	Yes	-
Slanted circuit board	-	-	Yes	-	-
Sampling rate converter	Yes	Yes	Yes	Yes	Yes

FEATURES	MXD-D5C	MXD-D40	MDS-JB940	MDS-JE470	MDS-PC3
Integrated CD player	5-CD	1-CD	-	-	-
High-speed CD-to-MD dubbing	4x	4x	-	-	-
2 Line display	Yes	Yes	Yes	-	-
Control A-1 II	-	-	Yes	-	Yes
PC Link terminal	-	Yes	-	Yes	Yes
PC Link Kit supplied	-	-	-	-	PCLK-MN10
PC keyboard input	Yes	-	Yes	-	-
Scale Factor Edit	Yes	Yes	Yes	-	Yes
Jog Dial control	Yes	Yes	Yes	Yes	Yes
Shuffle play/program play	Yes	Yes	Yes	Yes	Yes
Repeat play (1/All/A-B)	1/All	1/All	Yes	Yes	Yes
Name disc/Track	Yes	Yes	Yes	Yes	Yes
Time Machine Recording	6 sec.	6 sec.	6 sec.	6 sec.	6 sec.
Smart Space	Yes	Yes	Yes	Yes	Yes
Auto cut	Yes	Yes	Yes	Yes	Yes
CD Synchro record	Yes	Yes	Yes	Yes	Yes
CD TEXT display	Yes	Yes	Yes	-	-
Date/time stamp	-	-	Yes	-	Yes
Timer standby	-	-	Yes	-	-
Analog record volume	Yes	Yes	Yes	Yes	Yes
Digital record volume	Yes	Yes	Yes	Yes	Yes
Digital peak meters	Yes	Yes	Yes	Yes	Yes
Monaural recording	Yes	Yes	Yes	Yes	Yes
Playback pitch control	Yes	Yes	Yes	-	-
Remote Commander unit	Yes	Yes	Yes	Yes	Yes

EDITING FEATURES	MXD-D5C	MXD-D40	MDS-JB940	MDS-JE470	MDS-PC3
Combine tracks	Yes	Yes	Yes	Yes	Yes
Divide tracks	Yes	Yes	Yes	Yes	Yes
Move tracks	Yes	Yes	Yes	Yes	Yes
A-B erase	Yes	Yes	Yes	Yes	Yes
Erase track	Yes	Yes	Yes	Yes	Yes
Erase disc	Yes	Yes	Yes	Yes	Yes
Un-Do last edit	Yes	Yes	Yes	Yes	Yes
Rehearsal	Yes	Yes	Yes	Yes	Yes

SPECIFICATIONS	MXD-D5C	MXD-D40	MDS-JB940	MDS-JE470	MDS-PC3
Stereo record/play time:					
SP mode	80 min.	80 min.	80 min.	80 min.	80 min.
LP2 mode	160 min.	160 min.	160 min.	160 min.	160 min.
LP4 mode	320 min.	320 min.	320 min.	320 min.	320 min.
Record/playback time: monaural	160 min.	160 min.	160 min.	160 min.	160 min.
Sampling frequency	44.1 kHz	44.1 kHz	44.1 kHz	44.1 kHz	44.1 kHz
Frequency response	5 - 20,000 Hz, ± 0.5 dB	5 - 20,000 Hz, ± 0.5 dB	5 - 20,000 Hz, ± 0.3 dB	5 - 20,000 Hz, ± 0.3 dB	5 - 20,000 Hz, ± 0.3 dB
Dynamic range (playback)	>96 dB	>96 dB	>98 dB	>94 dB	>94 dB
S/N ratio (playback)	>98 dB	>98 dB	>100 dB	>96 dB	>94 dB
Harmonic distortion (playback)	<0.005%	<0.005%	<0.003%	<0.01%	<0.01%
Wow and flutter	Unmeasurable	Unmeasurable	Unmeasurable	Unmeasurable	Unmeasurable
Line input lacks	L/R	L/R	L/R	L/R	L/R
Optical inputs	1	1	2	1	2
Coaxial input	-	-	1	-	-
Line output jacks	L/R	L/R	L/R	L/R	L/R
Optical output	-	-	1	-	1
Coaxial output	-	-	1	-	-
Headphone output jack	Phone	Phone	Phone	-	Mini
Power consumption	18 w	22 w	18 w	15 w	14 w
Dimensions	17 x 4-3/4 x 14-3/4" (430 x 120 x 375 mm)	17 x 4-3/4 x 11-1/2" (430 x 120 x 290 mm)	17 x 4-1/4 x 11-1/4" (430 x 108 x 284 mm)	17 x 3-3/4 x 11-1/4" (430 x 95 x 285 mm)	6 x 2-5/8 x 11" (150 x 65 x 275 mm)
Weight	13 lbs., 3 oz. (6.0 kg)	10 lbs., 6 oz. (4.7 kg)	10 lbs., 12 oz. (4.9 kg)	6 lbs., 10 oz. (3.0 kg)	4 lbs., 7 oz. (2.0 kg)

DTC-ZE700	
Frequency response, 0.5 dB	
SP:	2—22,000 Hz
LP:	2—14,500 Hz
Signal-to-noise ratio	>90 dB
Dynamic range	>90 dB
Wow and flutter	Unmeasurable
Sampling rates	48, 44.1, 32 kHz
Number of motors	3 Direct Drive
Number of heads	2 Record/Play
Search speed	200x, 400x, Normal
Encoding	Super Bit Mapping Circuit
De-emphasis	Auto On/Off
Inputs	
Line	500 mV, 47k ohms
Optical	Square
Coaxial	Yes
Outputs	
Line	2 Volts rms, 10k ohms load
Headphones	1.2 mW variable, 32 ohms load
Optical	Square
Dimensions	17 x 4-1/4 x 12-7/8" (430 x 110 x 325 mm)
Weight	11 lbs. (5 kg)

RCD-W1	
Type	CD+CD-R/RW High speed dubbing recorder
D/A converter	24-bit
Frequency response	2Hz - 20 kHz ± 0.5 dB
Distortion	<0.005%, playback <0.005%, recording
Signal to Noise Ratio	>103 dB, playback >103 dB, recording
Dynamic Range	>93 dB, playback >93 dB, recording
Channel Separation	>90 dB
Outputs	
Line Out Fixed	2 V, 50k ohm
Headphone	10 mW, 32k ohm
Digital Output	optical
Inputs	
Line In	330 mV, 47k ohm
Digital Input	2 optical
Power consumption	26 watts
Dimensions	17 x 4-1/4 x 14-1/2" (430 x 108 x 368 mm)
Weight	11 lbs. (5.0 kg)

24-BIT ANALOG-TO-DIGITAL CONVERTER.

Establishes high precision in the record mode, with far wider dynamic range than conventional 16-bit circuitry. Forms the input for Sony's Wide Bit Stream technology.

24-BIT VARIABLE COEFFICIENT DIGITAL FILTER.

A system that actually lets you choose the basic operating principles of the filter, to suit the music. Operates at 24-bit word length, for superlative precision.

4X HIGH-SPEED DUBBING. With a CD player and recorder in one chassis, Sony dubbing recorders can transfer music at faster than real time.² You can dub a 60-minute CD in just 15 minutes!

A-B ERASE FUNCTION. MiniDisc enables you to continue shaping your music, even after it's recorded. A-B erase is ideal for deleting interruptions like radio commercials.

ALUMINUM FRONT PANEL. A precaution to stop the propagation of mechanical resonance and air-borne vibration.

ATRAC DSP TYPE "R." Sony's improved version of the Adaptive Transform Acoustic Coding (ATRAC) process at the heart of MiniDisc audio technology. Error evaluation, a second stage of bit re-allocation and superb processing accuracy yield smoother, more clearly delineated sound.

AUTO CUT. Places deck in Record/Pause mode after recording 30 seconds of silence.

CD-R RECORDING. CD-Recordable media is affordable, easy-to-use and playback compatible with a wide range of home, car and portable CD players.¹ This write-once media can be played back again and again.

CD-RW RECORDING. CD-ReWriteable media can be recorded, erased and re-recorded hundreds of times.¹ Playback requires "Multi-Read" drives specifically configured to read CD-RW.

CD TEXT AND CUSTOM FILE TEXT TRANSFER. If you have a Sony CD Player with Custom File memory and the Control A-1 II interface, you're in luck. The disc names and track names you've entered for your CDs don't need to be re-entered when you edit to MiniDisc!

CD SYNCHRO RECORD. Simplifies making MDs from compatible Sony CD players by releasing from Record/Pause mode when the CD player goes into Play.

CENTER-MOUNT MECHANISM. Placing the MD transport in the center reduces chassis vibration. The mechanism itself acts as a barrier to minimize internal radiation and hum.

CONTROL A-1 II INTERFACE. A communications protocol between audio components. Control A-1 II allows for commands and data to be transferred through all the components linked together. It also enables automatic transfer of CD TEXT and Custom File information as you record to MD.

CURRENT PULSE D/A CONVERTER. This Sony breakthrough, also used on our finest CD players, uses a highly stable current source in place of the common voltage source. So the 1-bit pulse train is far more stable, even during power supply voltage fluctuations.

DATE/TIME STAMP. Saves the date and time of recording as subcode data on the disc. The stamp is available for display during playback. It's a handy reference, particularly for live and off-the-air recordings.

DIGITAL INPUTS AND OUTPUTS. Enable digital-to-digital connection from a Compact Disc player and to a DSP receiver or preamplifier. Connections are made without repeated A/D and D/A conversions. There's also no noise pick-up. No RF interference. No effects of cable capacitance.

DIGITAL PEAK METERS. Display recording levels with ultra precision.

EDITING FEATURES. MiniDisc enables you to edit your music even after you've recorded it. Modes include Erase One, Erase All, Combine, Divide, Un-do, Record from end, Record Over, and Move tracks. By the way, a MiniDisc can be recorded and re-recorded over one million times.

HEADPHONE OUTPUT. For private listening, supplied with convenient volume control.

HIGH-SPEED CD-TO-MD DUBBING. Sony's integrated CD player/MD recorders can operate at 4X real time speed² so you can record an hour of music in just 15 minutes!

HYBRID PULSE D/A CONVERTER. Hybrid design places the digital filter and D/A converter on a single integrated circuit for shorter signal paths, reduced interference. Pulse converter minimizes zero-cross distortion, considered by researchers to be the most audible distortion in digital playback. The result is remarkably smooth, open sound — even during delicate quiet passages.

INSULATOR FEET. These protect the recorder from shelf-borne vibration. Insulator feet reduce the harmful effects of resonance on analog circuitry and the laser servo. Off-center screw holes help to diffuse modes of vibration.

JOG DIAL™ CONTROL. Turn this convenient control for split-second track access and also for text entry.

MD LONG PLAY (MDLP) MODES. Two recording speeds for extended music. LP2 captures up to 2 hours, 40 minutes of stereo music on a single 80-minute disc. LP4 captures up to 5 hours, 20 minutes. Requires compatible player.

MONAURAL RECORDING. Enables extended time — recording up to 160 minutes (mono), on an MDW-80.

NON-LINEAR RECORDING AND PLAYBACK. Like a CD, MiniDisc allows instant playback at the push of a button. You can also record without first searching for the end of the recorded section — the deck automatically finds blank spots on the disc and records onto them without interruption.

ONE-TOUCH SYNCHRO START/RECORD. Simplifies dubbing from CD to CD-R/RW. Coordinates the playback deck and the record deck for easier operation.

OVERWRITE FUNCTION. Lets you record over an existing track without erasing the entire disc.

PC KEYBOARD INPUT. The easy way to enter disc names, artist names and song titles. Enables you to plug in a standard PC-compatible keyboard and type.

PC-TO-MD RECORDING. Enables you to download Internet music, rip CDs, drag and drop songs to MD, perform point-and-click editing and type in titles. Available for the MXD-D40, MDS-JE470 when you add the optional PCLK-MNIO PC Link Kit. Principal feature of the MDS-PC3.

PLAYBACK PITCH CONTROL. If you play a musical instrument, listen up. This control enables you to "tune" MiniDisc playback sharper or flatter, to match your instrument!

PLAY MODES. Sony gives you many ways to play your discs, including Continuous Play of a Disc, Shuffle Play and Program Play of favorite songs in your own selected sequence.

PROGRAM PLAY. Like CD, MiniDisc gives you split-second access to any song. So MD is perfect for track programming, the feature that lets you listen to your music in your sequence.

R-CORE POWER TRANSFORMER. All hi-fi components use power transformers that can potentially radiate audible hum into the signal. The R-core design is an expensive, refined approach that vastly reduces radiated hum.

REMOTE COMMANDER REMOTE CONTROL. A handy unit with Direct Access™ track selection, title input and power on/off.

REPEAT MODES. Repeat a single track or an entire disc, for the continuous music of your choice.

SAMPLING RATE CONVERTER. MiniDisc records at 44.1 kHz. But these decks also accept digital-to-digital inputs at the DAT sampling rates of 32 and 48 kHz.

SCALE FACTOR EDIT. Enables you to adjust the volume of each track after you've recorded it, without disturbing the music itself. Great for compilation MDs, discs recorded at different times and discs recorded from different sources.

SHOCK RESISTANT MEMORY (SRM). Buffer holds up to six seconds of music for uninterrupted playback, even when accidentally bumped.

SMART SPACE. Provides a uniform three-second spacing between all songs.

S-TACT CIRCUITRY. Short for Synchronous Time Accuracy Controller. This Sony circuit isolates the clock generator from the digital filter's noise shaper, reducing digital jitter — a potential source of distortion.

TEXT DISPLAY. Shows the disc names, track names and artist names stored on both recordable and prerecorded MiniDiscs. Display scrolls to accommodate even long pieces of text.

TEXT ENTRY. You'll never need to guess what's on a MiniDisc. There's storage space for hundreds of characters of text. So you can store disc names, track names and artist names.

TIME MACHINE RECORDING. Here's another phenomenal application of the MiniDisc recorder's buffer memory. This system actually captures music up to six full seconds before you press the Record button. Perfect for recording live events or radio broadcasts.

TIMER STANDBY. Recording and playback with compatible Sony MHC Series mini home component systems.

UN-DO LAST EDIT. The convenience that lets you reverse your last Move, Erase or Combine edit. Un-do remains available until you eject the disc or record over your work.

WIDE BIT STREAM TECHNOLOGY. Maintains 20-bit precision through the recording process, for clearer reproduction of delicate, low-level music.

¹ MiniDisc, DAT and CD-R/RW recorders sold by manufacturer-authorized outlets incorporate the Serial Copy Management System, which will not prevent you from making a direct digital-to-digital copy from a digital source, but from such copies will prevent a second direct digital-to-digital copy from being made.

² Compact Disc condition may hinder high-speed dubbing capability.

© 2001 Sony Electronics Inc. Reproduction in whole or in part without written permission is prohibited. All rights reserved. Features and specifications are subject to change without notice. Non-metric weights and measures are approximate. Sony, CD TEXT, Custom File, Direct Access, Jog Dial, MegaStorage, Remote Commander and Super Bit Mapping are trademarks of Sony. Windows and Windows Me are trademarks of Microsoft Corporation.

SONY®

Sony Electronics Inc.
1 Sony Drive, Park Ridge, NJ 07656
www.sony.com