

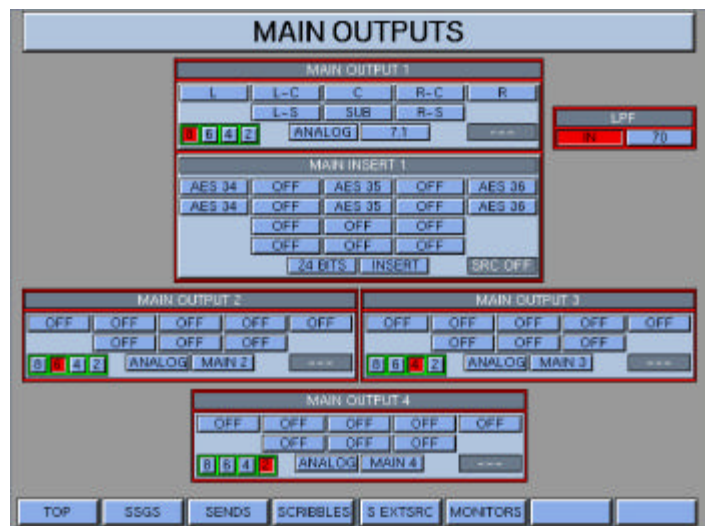
# OXFORD VERSION 3.0

*The Sony Oxford Version 3.0 update*

*Enhancements streamline surround and stereo mixing*

- **EIGHT CHANNEL WIDE MAIN MIX BUS**

The main mix bus architecture has been expanded from two to eight channels wide to easily accommodate surround formats such as 7.1, 5.1, and LCRS. An automated joystick is available on all channels feeding the main bus. The processing on the main bus includes an 8 wide linked EQ, insert, and the Envelope Modulator effect. The main bus compressor is 8 channels wide with a separate trim control for sub level compression.



- **NEW MONITOR PANEL**

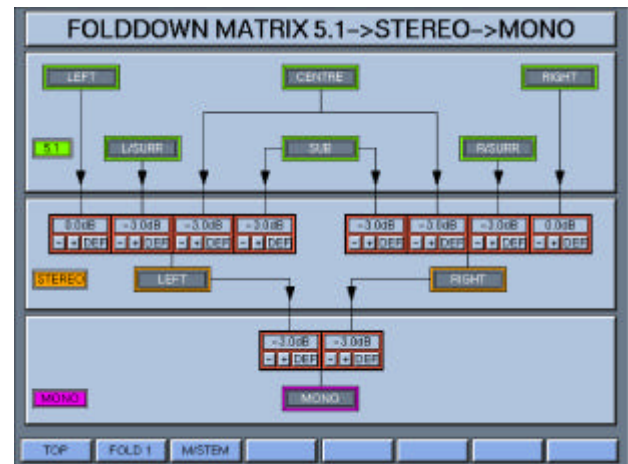
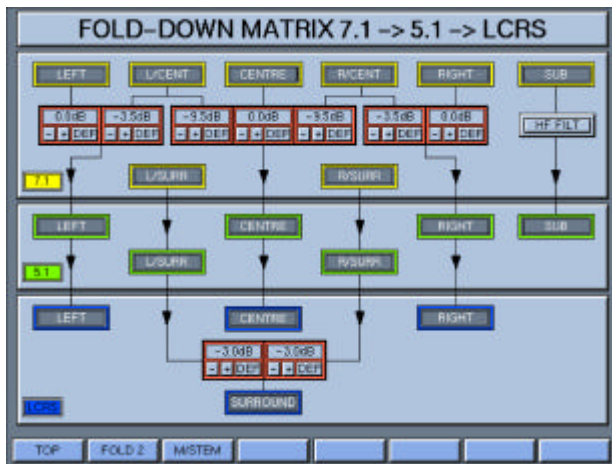
There is a new monitor panel that supports the enhanced eight channel wide program and monitoring. This panel has comprehensive monitoring support including 8 speaker cut switches and a speaker solo system. The monitor system includes full multi-speaker mono and phase invert capability.

- **SUPER SEND GROUPS**

Super Send Groups (SSG) 1 to 16 now replace the 8 former stereo sub groups. These groups can be flexibly linked into any combination of 7.1, 7.0, 5.1, 5.0, LCRS, LCR, Stereo and Mono with a maximum of 16 mono buses. Super send groups allow mix minus or separate stem mixes.

- **FOLD DOWN MATRIX**

A new down-mix or fold down matrix is available for monitoring or down mixing of the program output of any larger format such as 7.1 to all smaller formats such as 5.1, LCRS, Stereo and Mono. All fold-down parameters can be adjusted with the two Fold Down GUI pages. Additionally the mono mode can be selected to be the center speaker only or phantom center mono from the L & R speakers.



- **SUB CHANNEL LO PASS FILTER ON MONITOR OR PROGRAM**

The sub channel of the monitor output has an optional 24dB/octave low pass filter at 120 Hz. The main program bus sub channel output has an optional low pass filter at 24dB/octave that can be set at either 100 or 70Hz.

- **RETURN CHANNELS**

The return channels have been changed from the former 12 stereo return channels to a more flexible arrangement of 24 mono return channels. This allows using them as mono or linking them for stereo or surround returns. Return channels have two bands of parametric EQ with shelving or peaking, a joystick and can have inserts and delay on each channel.

## • ENHANCED DELAY MANAGEMENT

### Global Delay Compensation (GDC)

In addition to the existing automatic channel delay management feature there is a new global delay management feature. A single channel can be isolated while the rest of the console is advanced or delayed up to 80 ms. Global Delay Compensation can time align a channel to compensate for delays from such sources as digital outboard equipment.

### Super Send Group (SSG) Insert Compensation

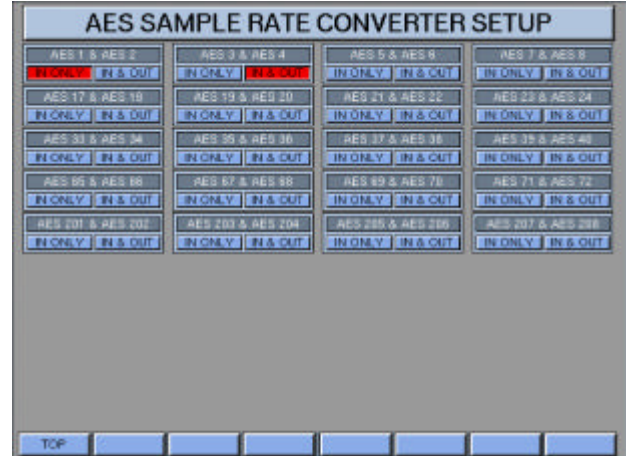
SSGs are now automatically time aligned for analog or digital inserts in the same way the channels are.

### SSG to Main Alignment

The SSGs are now time aligned for assignment to the main mix bus.

## • SAMPLE RATE CONVERTERS ON AES IN AND OUT

There are now sample rate converters available, if needed, on any AES inputs or outputs for main or insert I/O of the console.



## • ENHANCED COPY FUNCTIONS

### Hyper Copy

A new Hyper Copy function allows quick copies of Filters, EQ A, EQ B or Dynamics settings from one channel to another without having to utilize the GUI snapshot mask.

### Dynamic and Static Copy Buttons

You can now select whether to make a dynamic (automated) or static (non-automated) copy from channel to channel.

# OXFORD

- **CONSOLE UNDO FUNCTIONS**

- Static Undo**

- Allows any static knob turn, fader move or button press to be undone and redone. The console can undo up to 256 fader, knob or button presses.

- New Automation Individual Channel Undo Feature**

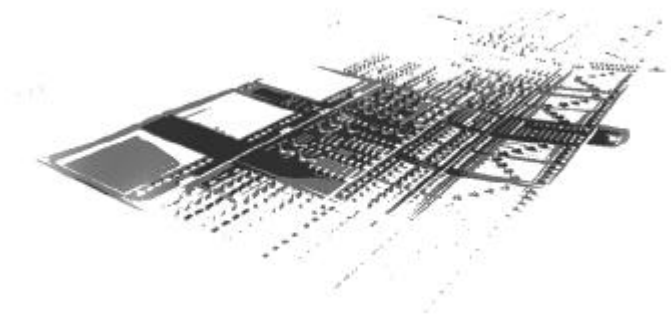
- You can now 'undo' one channel's automation moves without undo-ing the other channel's moves from an automation pass.

- **SOLO UNDER MODE**

- A new 'Solo Under' or 'Solo-in-Front' mode will dim all other channels, which will keep the mix in context while solo-ing a channel.

- **QUICK SHOW-I/O FUNCTION**

- Show I/O allows the display of the actual I/O, such as the ADC or AES number, assigned to each channel.



- **MULTIPLE SURROUND MONITOR SYSTEMS**

- Large and small surround monitors are now supported in addition to a stereo monitor.

- **ACCESS FOLLOW TOUCH**

- You can now activate a channel's access button by just touching a fader. This is in addition to the existing Access Follow Solo feature.

- **REMOTE STUDIO LINK (RSL)**

- The remote studio link feature allows two producers or engineers in different physical locations to collaborate on a mix. A person in LA can control an Oxford console in New York, Miami or Paris.



- **UPS MANAGEMENT**

A user can be notified of the battery status of the console's UPS system with a popup warning message to the screen and have the mix automatically saved.

## **New Live or Broadcast features**

- **NEW PFL BUTTON AVAILABLE ON FADER KNOB**

Allows fast PFL of a fader without removing your finger from the fader knob.

- **EVENT TRIGGERED SNAP SHOT LOAD**

This allows an external device such as a video switcher or internal console buttons to load a cached snapshot within a video frame. This can, for example, allow instant changes to the sound field based on a camera change.

- **CHANNEL DELAY IN VIDEO FRAMES**

Channel delay setting may now be viewed in video frames. This is in addition to the mS, Feet and inches, Meters and Beats per minute readout capability.

## **Screen Functions**

- **ALL-RAISE BUTTONS**

This allows you to press one button to see all I/O or all Routing screens on either or both sides of the console. The previous screen setup is remembered which allows you to return to your previous screen setup.

- **EQ AND DYNAMICS GUI AUTO SHOW**

There is a new preference that allows the GUI screens above the EQ or Dynamics panels to change automatically to show the EQ or Dynamics GUI screen whenever an EQ or Dynamics control is adjusted.

- **FAST SCRIBBLE STRIP ENTRY SCHEME**

Repeat raise allows quick assignment of I/O such as A/D converters and scribble or channel labels. The page remains open and auto increments through the channels until you close it.





## New Automation Features

- **LIST REORDERING**

You can now reorder the items in the Session Manager's Project, Title Snapshots and Mixes lists.

- **NEW FILM MODE - COPYING AUDITIONED VALUES**

When working in film mode if you audition a new EQ setting, for example, this auditioned value can now be copied to other channels to create a similar ambiance in a particular scene.

## Incidental Items

- **I/O ALIAS IMPROVEMENTS**

AES I/O aliases can now be different for AES inputs and AES outputs.

- **DIM LEVEL CONTROL**

The DIM level control is now available on the monitor trim pot.

- **CONTROL ROOM MONITOR POT LEVEL INDICATION**

When the monitor level is adjusted the display momentarily displays the dB level.

- **PAN UN-CUT BEHAVIOR**

There is a new preference setting that allows the pan control to return to its previous setting when it is un-cut.

- **EXTERNAL METER OUTPUTS**

There are now eight meter outputs available for the new eight wide main bus.

**Notes:**

Additional hardware required for Remote Studio Link (RSL), UPS Management, and Event Triggered Snap Shot Load features. Contact Sony for details.

The Version 3.0 upgrade supports R3-96 Plus and R3-96 systems. R3-72 Plus systems (12 SP cards) require 4 additional SP cards.

R3-96 Plus systems (16 SP cards) include 96 channels with 5 band EQ, filters, compressor, expander, limiter, gate and side chain EQ, 24 mono return channels, 24 aux sends, and 16 SSGs.

R3-96 systems (9 SP cards) include 96 channels with 5 band EQ, filters, compressor and gate, 12 aux sends, and 8 SSGs.