



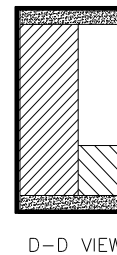
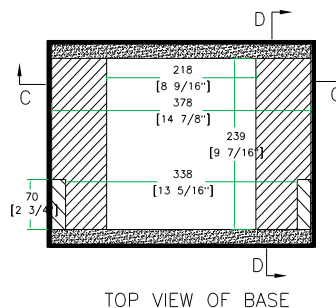
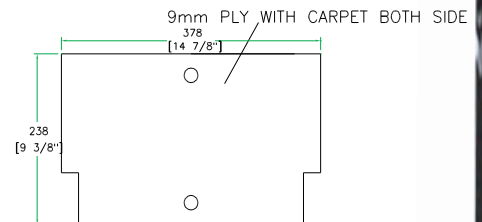
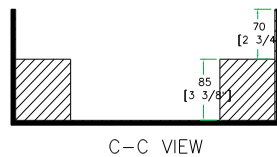
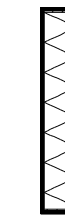
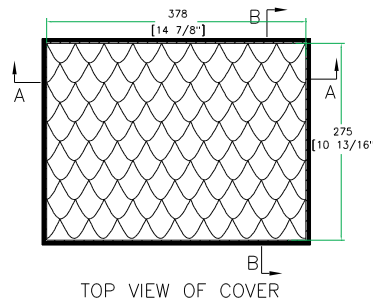
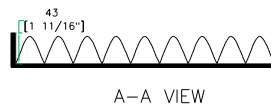
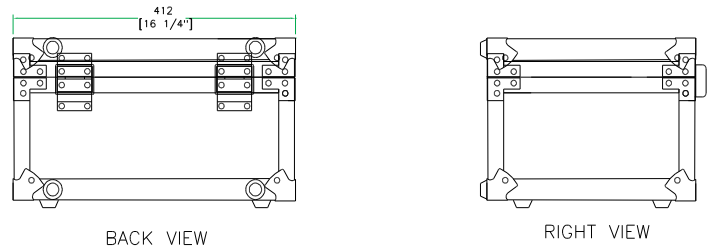
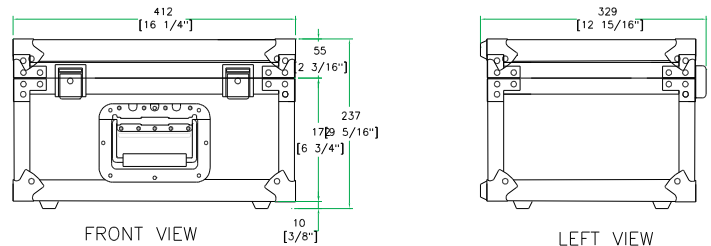
RRTTM56

Created for the Pro's, the RRTTM56 mixer case is made for the journey and built to hold strong in high stress situations. Designed to fit Rane TTM54 & TTM56 mixers, the RRTTM56 also features an extra integrated storage compartment for accessories in the base. Tougher than the pavement! That's the idea.

Rugged Road Ready Features

- * Double Anchor Industrial Rivets
- * Lockable Latches
- * Industrial Grade Rubber Feet
- * Spring Loaded Handle
- * Premium 3/8" Vinyl Laminated Plywood
- * Tongue and Groove Locking Fit
- * Integrated Storage Compartment
- * Road Ready Limited Lifetime Warranty

CASE FOR RANE TTM54 & TTM56 MIXER



www.roadreadycases.com

Road Ready Cases 18120 S. Broadway St. Unit B Gardena, Ca. 90248- 3536
ph: 310 767 1772 fax: 310 767 1798