



RRPLASMA42C

Designed to protect and transport a 42" Plasma, the RRPLASMA42C makes sure that the show will go on. Our unique universal fit design fits various models and secures your plasma in place to provide the ultimate protection during transport. And to make transportation a breeze we included a rugged caster board for easy mobility!

Rugged Road Ready

Features

- * Beefy, Stackable Ball Corners
- * Double Anchor Industrial Rivets
- * Recessed, Industrial Grade Latches
- * Recessed, Spring Loaded Handles
- * Industrial Grade Rubber Feet
- * Premium 3/8" Vinyl Laminated Plywood
- * Tongue and Groove Locking Fit
- * Rugged Caster Board
- * ATA 300 Rating
- * Road Ready Limited Lifetime Warranty

Shipping Dimensions (inch): 50.2 x 15.6 x 33.3

Shipping Weight (lbs): 108.9

Product Dimensions (inch): 49.7 x 15.0 x 37.0

Product Weight (lbs): 100.8

Shipping Dimensions (cm): 127.5 x 39.7 x 84.5

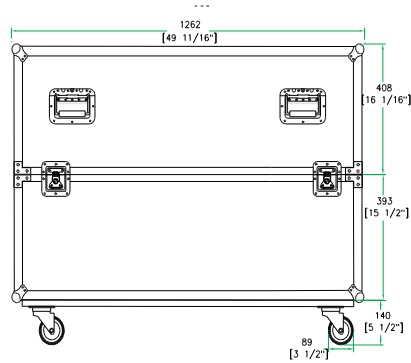
Shipping Weight (kg): 49.5

Product Dimensions (cm): 126.3 x 38.2 x 94.1

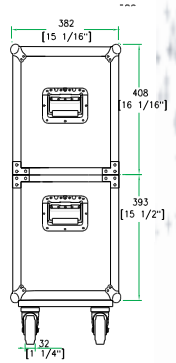
Product Weight (kg): 45.8

5/05

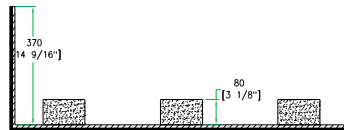
Universal Case with Casters for 42" Plasma



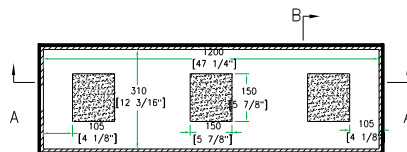
FRONT VIEW
BACK VIEW



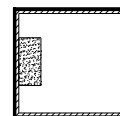
LEFT VIEW
RIGHT VIEW



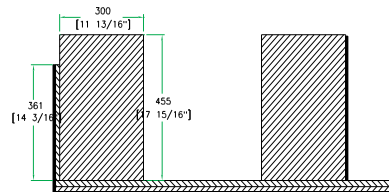
A-A VIEW



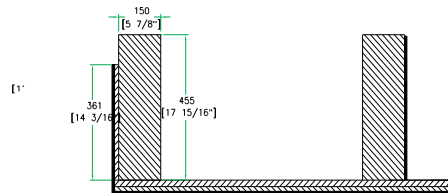
TOP VIEW OF COVER



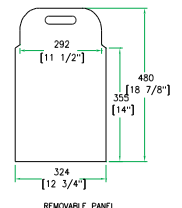
B-B VIEW



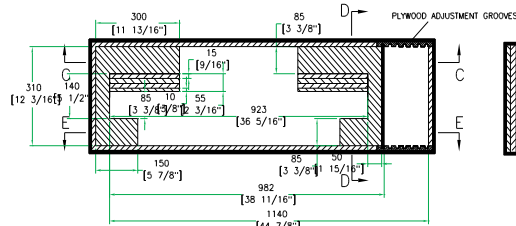
C-C VIEW



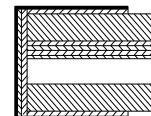
E-E VIEW



REMOVABLE PANEL



TOP VIEW OF BASE



D-D VIEW

www.roadreadycases.com

Road Ready Cases 18120 S. Broadway St. Unit B Gardena, Ca. 90248-3536
ph: 310 767 1772 fax: 310 767 1798