



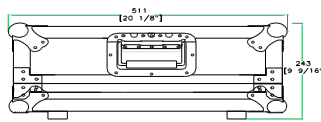
RRONYX1620

Created for the Pro's, the RRONYX1620 mixer case is made for the journey and built to hold strong in high stress situations. Designed to fit the Mackie ONYX 1620 16 ch mixer, the RRONYX1620 features a heavy-duty removable, latchable cover with our No Pressure Design to protect your mixer controls and a unique low profile base design that allows you to access your mixer's rear connection panel without removing the mixer from the case. Tougher than the pavement! That's the idea..

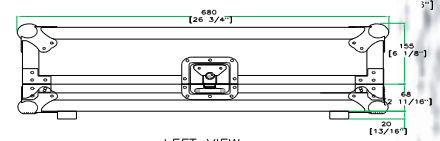
Rugged Road Ready Features

- * Beefy, Stackable Ball Corners
- * Double Anchor Industrial Rivets
- * Recessed, Industrial Grade Latches
- * Recessed, Spring Loaded Handles
- * Industrial Grade Rubber Feet
- * Premium 3/8" Vinyl Laminated Plywood
- * Tongue and Groove Locking Fit
- * Low Profile Base
- * ATA 300 Rating
- * Road Ready Limited Lifetime Warranty

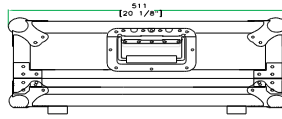
CASE FOR MACKIE ONYX 1620 MIXER



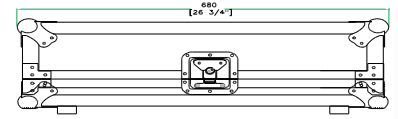
FRONT VIEW



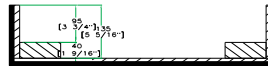
LEFT VIEW



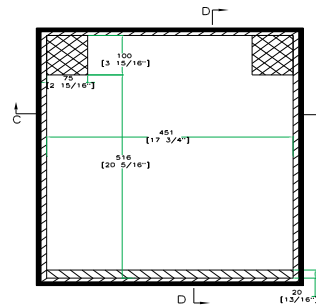
BACK VIEW



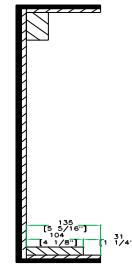
RIGHT VIEW



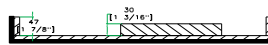
C-C VIEW



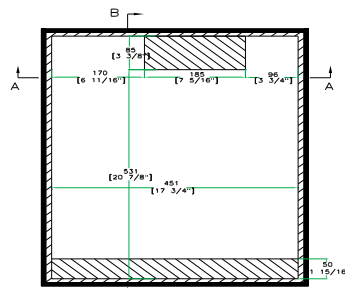
TOP VIEW OF COVER



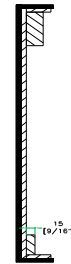
D-D VIEW



A-A VIEW



TOP VIEW OF BASE



B-B VIEW

TOP VIEW OF BASE

www.roadreadycases.com

Road Ready Cases 18120 S. Broadway St. Unit B Gardena, Ca. 90248- 3536
 ph: 310 767 1772 fax: 310 767 1798