



## RRMG32

Created for the Pro's, the RRMG32 mixer case is made for the journey and built to hold strong in high stress situations. Designed to fit the Yamaha MG 32/14 FX mixer, the RRMG32 features a heavy-duty removable, latchable cover with our No Pressure Design to protect your mixer controls and a unique low profile base design that allows you to access your mixer's rear connection panel without removing your mixer from the case. Tougher than the pavement! That's the idea.

### Rugged Road Ready Features

- \* Beefy, Stackable Ball Corners
- \* Double Anchor Industrial Rivets
- \* Recessed, Industrial Grade Latches
- \* Recessed, Spring Loaded Handles
- \* Industrial Grade Rubber Feet
- \* Premium 3/8" Vinyl Laminated Plywood
- \* Tongue and Groove Locking Fit
- \* Low Profile Base Design
- \* ATA 300 Rating
- \* Road Ready Limited Lifetime Warranty

Shipping Dimensions ( inch): 43.7 x 27.9 x 9.7

Shipping Weight ( lbs): 54.1 lbs

Product Dimensions (inch): 43.1 x 27.3 x 8.9

Product Weight (lbs): 46.2 lbs

Shipping Dimensions ( cm): 110.9 x 70.9 x 24.6

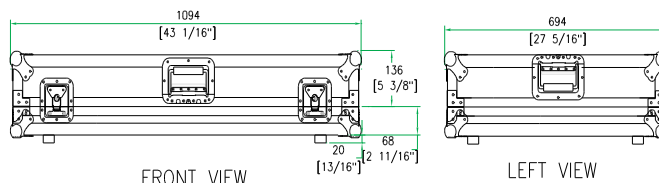
Shipping Weight ( kg): 24.6 kg

Product Dimensions (cm): 109.4 x 69.4 x 22.6

Product Weight (kg): 21 kg

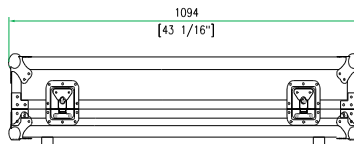
5/05

## Case for Yamaha MG 32/14 FX Mixer

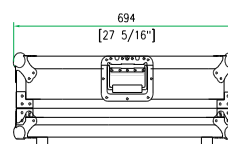


FRONT VIEW

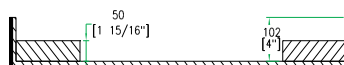
LEFT VIEW



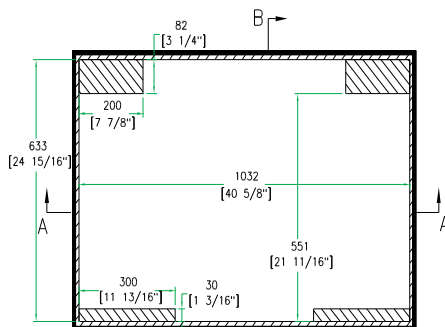
BACK VIEW



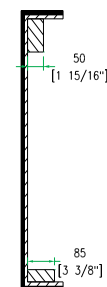
RIGHT VIEW



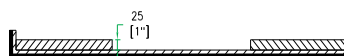
A-A VIEW



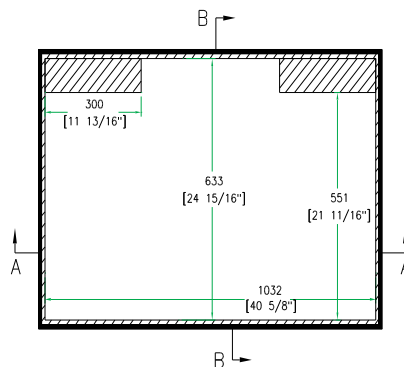
TOP VIEW OF COVER



B-B VIEW



C-C VIEW



TOP VIEW OF BASE

D-D VIEW

[www.roadreadycases.com](http://www.roadreadycases.com)

Road Ready Cases 18120 S. Broadway St. Unit B Gardena, Ca. 90248- 3536  
 ph: 310 767 1772 fax: 310 767 1798