



RRM16UW

Good construction doesn't go out of style. That's our MO and that's why we create cases that are done right. Designed with a 10U slanted top rack for convenient mixer/CD controller placement and a 16U vertical rack for amp. or effect units, the RRM16U is built right. The RRM16U features an 18" mountable rack depth and 2 heavy-duty removable covers. To make a good thing even better we added an unique removable, rear hinged door for easy access to your gear. We even included a heavy-duty 3 1/2" caster kit for easy mobility. At last, connections without a hassle.

Rugged Road Ready Features

- * Beefy, Stackable Ball Corners
- * Double Anchor Industrial Rivets
- * Recessed, Industrial Grade Latches
- * Recessed, Spring Loaded Handles
- * Industrial Grade Rubber Feet
- * Premium 3/8" Vinyl Laminated Plywood
- * Tongue and Groove Locking Fit
- * Heavy Duty Rack Rails
- * Hinged Rear Access Door
- * Heavy Duty 3 1/2" Caster Kit
- * Mounting Hardware Included
- * ATA 300 Rating
- * Road Ready Limited Lifetime Warranty

Shipping Dimensions (inch): 24.2 x 21.9 x 40.6

Shipping Weight (lbs): 86.9 lbs

Product Dimensions (inch): 23.9 x 21.5 x 44.6

Product Weight (lbs): 80.1 lbs

Shipping Dimensions (cm): 57 x 63.5 x 106

Shipping Weight (kg): 39.5 kg

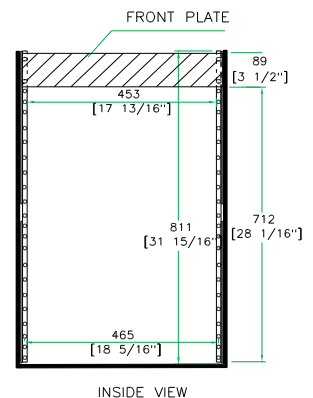
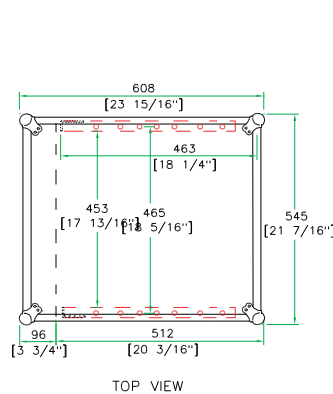
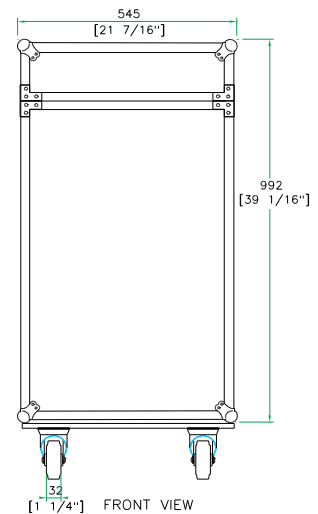
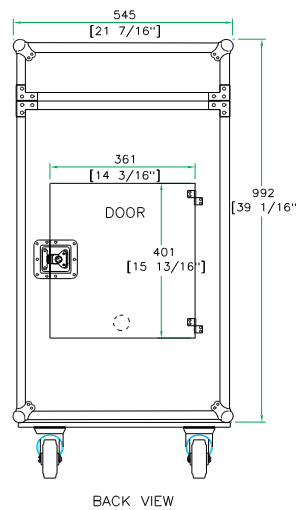
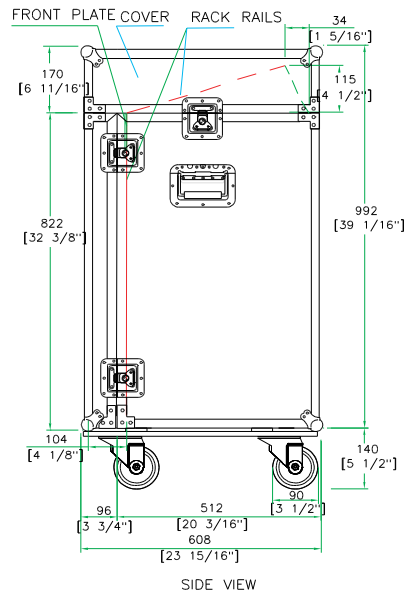
Product Dimensions (cm): 61.5 x 55.5 x 103.2

Product Weight (kg): 36.4 kg

5/05

Need optional Road Ready Accessories to help outfit your Slant Rack? Check out our Road Ready Caster Kit (RRWAD) , Rolling Base with Storage Drawer (RR6WD) and Road Ready Side Wings (RRMW)

10U Slant Mixer/16U Vertical Rack Case with Caster Kit



www.roadreadycases.com

Road Ready Cases 18120 S. Broadway St. Unit B Gardena, Ca. 90248- 3536
 ph: 310 767 1772 fax: 310 767 1798