



# RRLP

Get your Groove on with Road Ready's RRLP. Built rugged and smart this ATA style LP case offers the ultimate in protection for your LP collection, period. Built to house up to 80 LPs the RRLP is packed with Rugged Road Ready Features like beefy, stackable ball corners, double anchor industrial rivets, recessed industrial grade latches, a spring loaded handle, premium 3/8" vinyl laminated plywood construction, and tongue and groove locking fit. Straight-up Durability!

## Rugged Road Ready

### Features

- \* Beefy, Stackable Ball Corners
- \* Double Anchor Industrial Rivets
- \* Recessed, Industrial Grade Latches
- \* Recessed, Spring Loaded Handles
- \* Industrial Grade Rubber Feet
- \* Premium 3/8" Vinyl Laminated Plywood
- \* Tongue and Groove Locking Fit
- \* ATA 300 Rating
- \* Road Ready Limited Lifetime Warranty

Shipping Dimensions (inch): 15.6 x 15.6 x 15.9

Shipping Weight (lbs): 22 lbs

Product Dimensions (inch): 15 x 15 x 15.3

Product Weight (lbs): 19.8 lbs

Shipping Dimensions (cm): 39.5 x 39.5 x 40.5

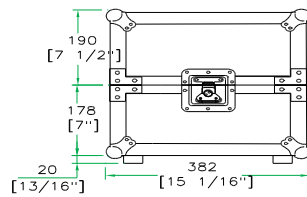
Shipping Weight (kg): 10 kg

Product Dimensions (cm): 38.2 x 38.2 x 38.8

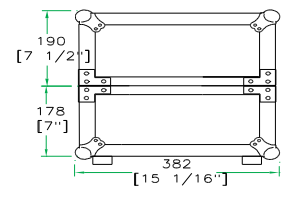
Product Weight (kg): 9 kg

5/05

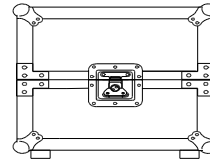
## 80 LP DELUXE LP CASE



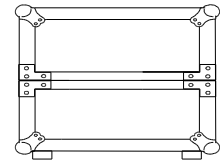
FRONT VIEW



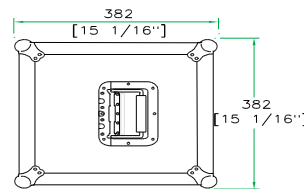
LEFT VIEW



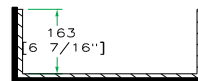
BACK VIEW



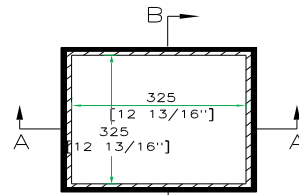
RIGHT VIEW



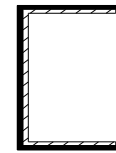
TOP VIEW



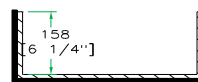
A-A VIEW



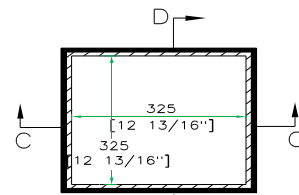
TOP VIEW OF COVER



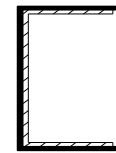
B-B VIEW



C-C VIEW



TOP VIEW OF BASE



D-D VIEW

[www.roadreadycases.com](http://www.roadreadycases.com)

Road Ready Cases 18120 S. Broadway St. Unit B Gardena, Ca. 90248- 3536  
 ph: 310 767 1772 fax: 310 767 1798