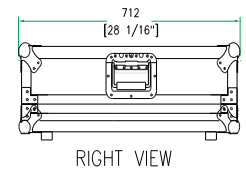
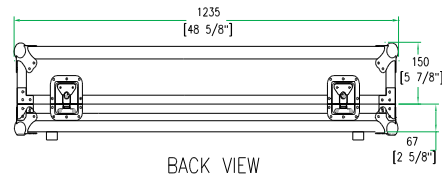
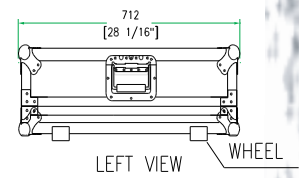
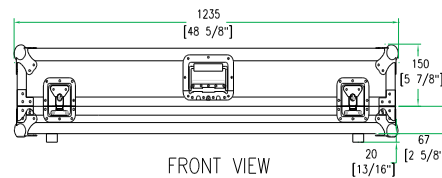
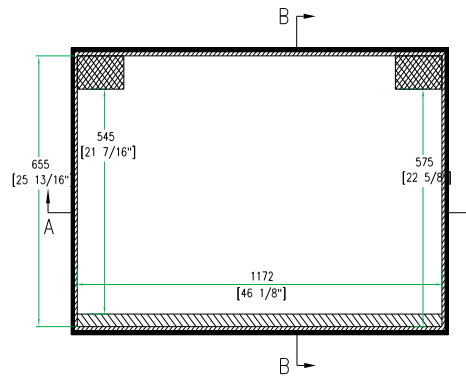




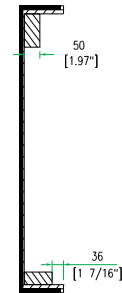
# Allen & Heath GL2200- 434 32 Channel Mixer Case with Wheels



A-A VIEW



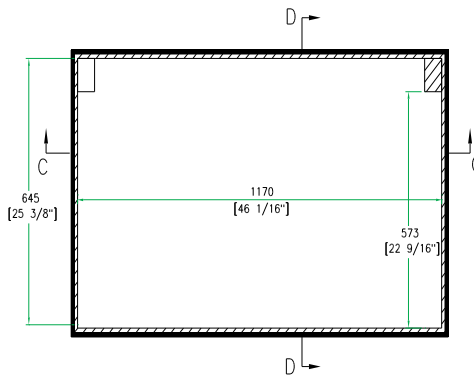
TOP VIEW OF COVER



B-B VIEW



C-C VIEW



TOP VIEW OF BASE



D-D VIEW

## RRGL2200432W

Created for the Pro's, the RRGL2200432W mixer case is made for the journey and built to hold strong in high stress situations. Designed to fit the Allen & Heath GL2200-432 32 channel mixer, the RRGL2200432W features a heavy-duty, removable, cover crafted with our no-pressure design to protect your mixer controls and our unique low profile base that allows you to access the mixer's rear connection panel without removing your mixer from the case. And to make transporting your gear even easier we included our low profile wheels for sleek, stealth mobility. Tougher than the pavement!

### Rugged Road Ready Features

- \* Beefy, Stackable Ball Corners
- \* Double Anchor Industrial Rivets
- \* Recessed, Industrial Grade Latches
- \* Recessed, Spring Loaded Handles
- \* Industrial Grade Rubber Feet
- \* Premium 3/8" Vinyl Laminated Plywood
- \* Tongue and Groove Locking Fit
- \* Low Profile Base
- \* Low Profile Wheels
- \* ATA 300 Rating
- \* Road Ready Limited Lifetime Warranty

Shipping Dimensions (inch): 49.4 x 28.7 x 10.2

Shipping Weight (lbs): 62.3 lbs

Product Dimensions (inch): 48.6" x 28" x 9.3"

Product Weight (lbs): 54.3 lbs

Shipping Dimensions (cm): 125.5 x 72 x 25

Shipping Weight (kg): 28.3 kg

Product Dimensions (cm): 123.5 x 73 x 26

Product Weight (kg): 24.7 kg

5/2005

[www.roadreadycases.com](http://www.roadreadycases.com)

Road Ready Cases 18120 S. Broadway St. Unit B Gardena, Ca. 90248- 3536  
ph: 310 767 1772 fax: 310 767 1798