



RRDJM600

Created for straight-up durability, the RRDJM600, is one tough cookie. A rugged mixer case, the RRDJM600 is crafted to fit the Pioneer DJM600 and DJM500 mixers and other popular models. Designed with brawn and brains, it features adjustable modular foam lining so that you can create the perfect custom fit for your mixer. Quick, Smart, Simple and 100% Road Ready!

Rugged Road Ready

Features

- * Beefy, Stackable Ball Corners
- * Double Anchor Industrial Rivets
- * Recessed, Industrial Grade Latches
- * Recessed, Spring Loaded Handles
- * Industrial Grade Rubber Feet
- * Premium 3/8" Vinyl Laminated Plywood
- * Tongue and Groove Locking Fit
- * ATA 300 Rating
- * Road Ready Limited Lifetime Warranty

Shipping Dimensions (inch): 15.7 x 19.7 x 9.8

Shipping Weight (lbs): 25.3

Product Dimensions (inch): 15 x 18.9 x 9.1

Product Weight (lbs): 19.1

Shipping Dimensions (cm): 40 x 50 x 25

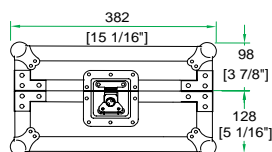
Shipping Weight (kg): 11.5

Product Dimensions (cm): 38 x 48 x 23

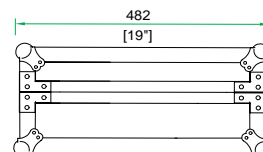
Product Weight (kg): 8.7

3/2004

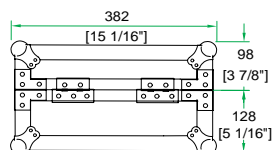
Case For Pioneer DJM600 and DJM500 Mixers



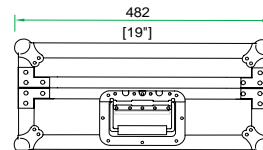
FRONT VIEW



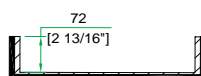
LEFT VIEW



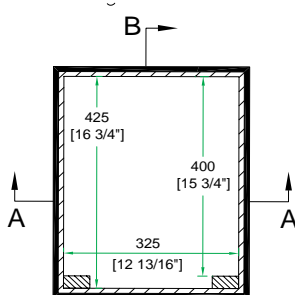
BACK VIEW



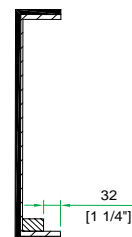
RIGHT VIEW



A-A VIEW



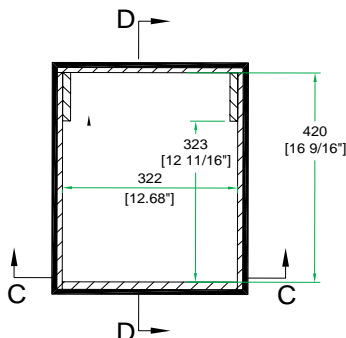
TOP VIEW OF COVER



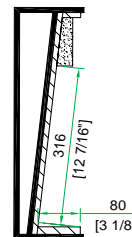
B-B VIEW



C-C VIEW



TOP VIEW OF BASE



D-D VIEW

www.roadreadycases.com

Road Ready Cases 18120 S. Broadway St. Unit B Gardena, Ca. 90248- 3536
 ph: 310 767 1772 fax: 310 767 1798