



RR2MM

Lights, Sound, Action! Designed to protect and transport sensitive mirror scanners, the RR2MM makes sure that the show will go on. Built with a Universal-Fit-Design, the RR2MM accommodates various models and features a special Lay-Down interior which provides the ultimate transport protection for your mirror scanners. Let there be Light!

Fits the following models:

Chauvet Insignia, Intimidator
ADJ DJ 250, Active Scan 250, Active Wave 250

Rugged Road Ready Features

- * Beefy, Stackable Ball Corners
- * Double Anchor Industrial Rivets
- * Recessed, Industrial Grade Latches
- * Recessed, Spring Loaded Handles
- * Industrial Grade Rubber Feet
- * Premium 3/8" Vinyl Laminated Plywood
- * Tongue and Groove Locking Fit
- * ATA 300 Rating
- * Road Ready Limited Lifetime Warranty

Shipping Dimensions (inch): 22.6 x 21.9 x 10.2

Shipping Weight (lbs): 29

Product Dimensions (inch): 22.2 x 21.5 x 9.3

Product Weight (lbs): 25.7

Shipping Dimensions (cm): 57.5 x 55.5 x 26

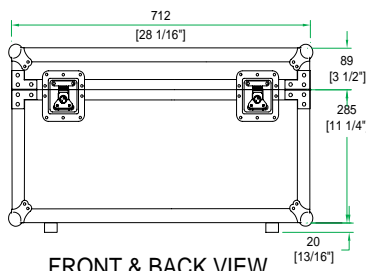
Shipping Weight (kg): 13.2

Product Dimensions (cm): 56.5 x 54.5 x 23.5

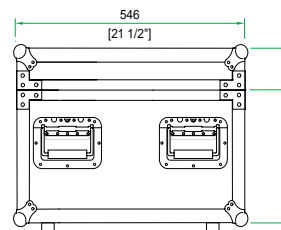
Product Weight (kg): 11.7

4/04

Universal Case for 2 Moving Mirrors



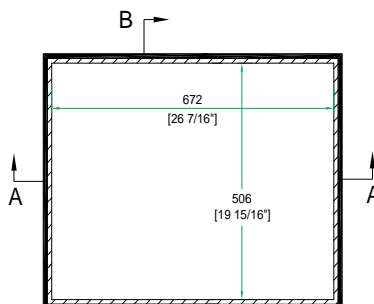
FRONT & BACK VIEW



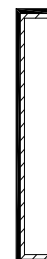
SIDE VIEW



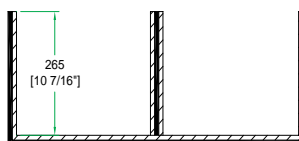
A-A VIEW



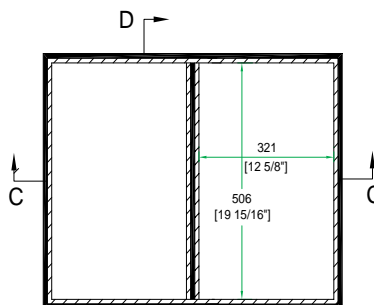
TOP VIEW OF COVER



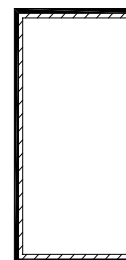
B-B VIEW



C-C VIEW



TOP VIEW OF BASE



D-D VIEW

www.roadreadycases.com

Road Ready Cases 18120 S. Broadway St. Unit B Gardena, Ca. 90248- 3536
ph: 310 767 1772 fax: 310 767 1798