



## RR2MH575C

Lights, Sound, Action! Designed to protect and transport two 575 Type Moving heads, the RR2MH575C makes sure that the show will go on. Our unique Hanging Lock-in-Place design securely holds your moving heads in place and provides the ultimate protection during transport. And to make transportation a breeze we included a rugged caster board for easy mobility. Let there be light!

### Fits the following models:

High End Studio Color 575, Studio Spot 575  
 Studio Spot CMY, Studio Beam  
 Coemar Prospot 575, Prowash 575LX  
 Robe Colorspot 575 AT, Spot 575 XT, Wash 575 XT  
 Martin Mac 600, Mac 600NT, Mac 500, Mac 550 Profile

## Rugged Road Ready

### Features

- \* Beefy, Stackable Ball Corners
- \* Double Anchor Industrial Rivets
- \* Recessed, Industrial Grade Latches
- \* Recessed, Spring Loaded Handles
- \* Industrial Grade Rubber Feet
- \* Premium 3/8" Vinyl Laminated Plywood
- \* Tongue and Groove Locking Fit
- \* Rugged Caster Board
- \* ATA 300 Rating
- \* Road Ready Limited Lifetime Warranty

Shipping Dimensions ( inch): 44.5 X 24 X 37.4

Shipping Weight ( lbs): 80.3

Product Dimensions (inch): 43.9 X 22.6 X 36.7

Product Weight (lbs): 106.3

Shipping Dimensions ( cm): 113 X 61 X 95

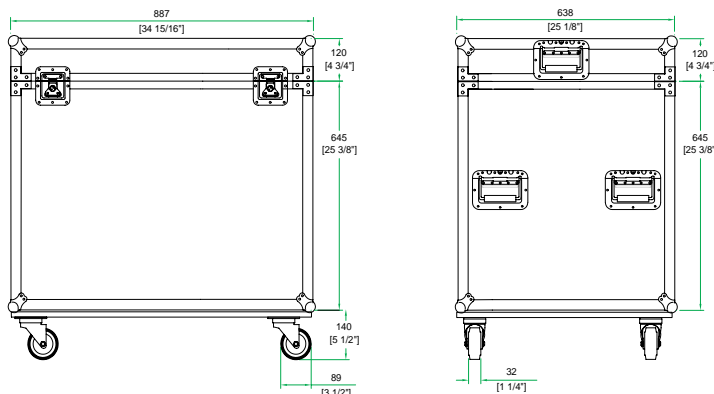
Shipping Weight ( kg): 53

Product Dimensions (cm): 111.4 X 57.5 X 93.1

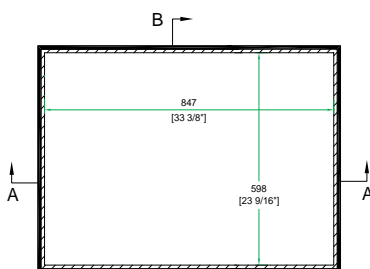
Product Weight (kg): 48.3

3/05

## Case for 2 x 575 Type Moving Heads in Hanging Position w/ Caster



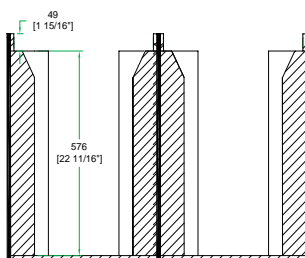
A-A VIEW



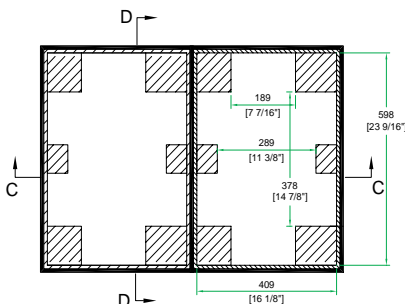
TOP VIEW OF COVER



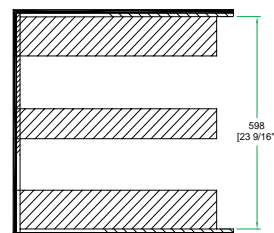
B-B VIEW



C-C VIEW



TOP VIEW OF BASE



D-D VIEW

[www.roadreadycases.com](http://www.roadreadycases.com)

Road Ready Cases 18120 S. Broadway St. Unit B Gardena, Ca. 90248- 3536  
 ph: 310 767 1772 fax: 310 767 1798