



## RR2MH250SC

Lights, Sound, Action! Designed to protect and transport two 250 Type moving heads, the RR2MH250SC makes sure that the show will go on. Our unique hanging lock-in-place design securely holds your moving heads in place and provides the ultimate protection during transport. And to make transporting a breeze we included a rugged caster kit for easy mobility. Let there be light!.

## Rugged Road Ready Features

- \* Beefy, Stackable Ball Corners
- \* Double Anchor Industrial Rivets
- \* Recessed, Industrial Grade Latches
- \* Recessed, Spring Loaded Handles
- \* Industrial Grade Rubber Feet
- \* Premium 3/8" Vinyl Laminated Plywood
- \* Tongue and Groove Locking Fit
- \* Rugged Caster Kit
- \* ATA 300 Rating
- \* Road Ready Limited Lifetime Warranty

### Fits the following models:

**Coemar:** Prospot 575 LX, Prowash 575 LX  
**Robe:** Colorspot 575AT, Spot 575XT, Wash 575XT  
**Martin:** MAC 600, MAC 600NT Entour, MAC 500, MAC 550 Profile  
**Hi End:** Studio Color 575, Studio Spot 575, Studio Beam, Studio Spot CMY

Shipping Dimensions (inch): 44.5 X 24 X 37.4

Shipping Weight (lbs): 81.4

Product Dimensions (inch): 31.6 X 17.2 X 24.1

Product Weight (lbs): 75.2

Shipping Dimensions (cm): 113 X 61 X 95

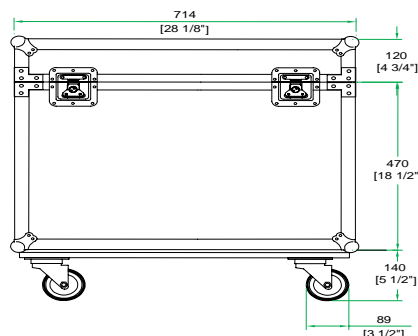
Shipping Weight (kg): 37

Product Dimensions (cm): 80.3 X 43.8 X 61.2

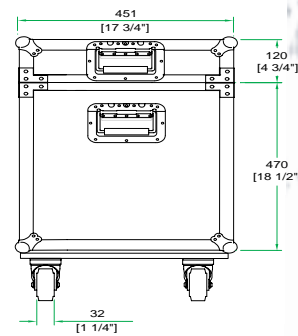
Product Weight (kg): 34.2

3/05

## Universal Fit Case for 2 x 250 Type Moving Heads in Hanging Position w/ Caster Board



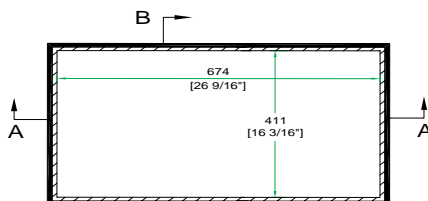
FRONT VIEW  
BACK VIEW



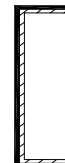
LEFT VIEW  
RIGHT VIEW



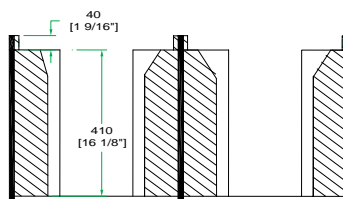
A-A VIEW



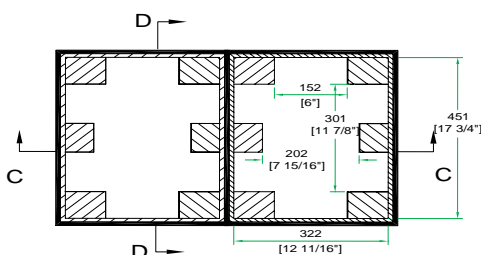
TOP VIEW OF COVER



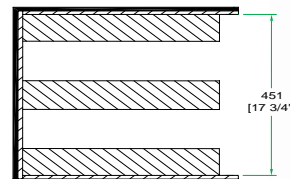
B-B VIEW



C-C VIEW



TOP VIEW OF BASE



D-D VIEW

[www.roadreadycases.com](http://www.roadreadycases.com)

Road Ready Cases 18120 S. Broadway St. Unit B Gardena, Ca. 90248- 3536  
 ph: 310 767 1772 fax: 310 767 1798