



RR12MIX

Created for straight-up durability, the RR12MIX, is one tough cookie. A rugged mixer case, the RR12MIX fits most 12" mixers including the Pioneer DJM600 and DJM500 mixers. Quick, Smart, Simple and 100% Road Ready!

Rugged Road Ready Features

- * Beefy, Stackable Ball Corners
- * Double Anchor Industrial Rivets
- * Recessed, Industrial Grade Latches
- * Recessed, Spring Loaded Handles
- * Industrial Grade Rubber Feet
- * Premium 3/8" Vinyl Laminated Plywood
- * Tongue and Groove Locking Fit
- * ATA 300 Rating
- * Road Ready Limited Lifetime Warranty

Shipping Dimensions (inch): 15.7 x 19.7 x 10.2

Shipping Weight (lbs): 38.2

Product Dimensions (inch): 15 x 19 x 8.9

Product Weight (lbs): 22.2

Shipping Dimensions (cm): 40 x 50 x 26

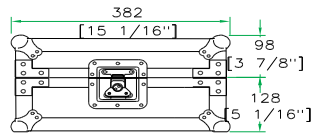
Shipping Weight (kg): 11.5

Product Dimensions (cm): 38.2 x 48.2 x 22.6

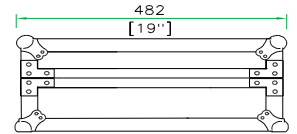
Product Weight (kg): 10.1

3/05

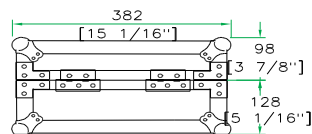
case for Pioneer DJM600 and DJM500 Mixers



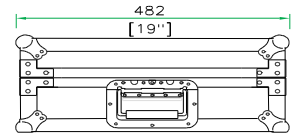
FRONT VIEW



LEFT VIEW



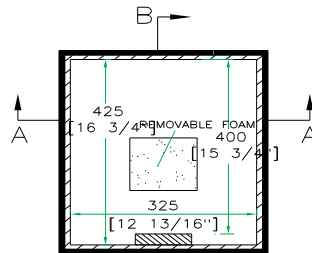
BACK VIEW



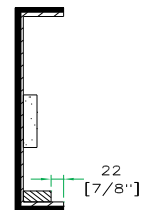
RIGHT VIEW



A-A VIEW



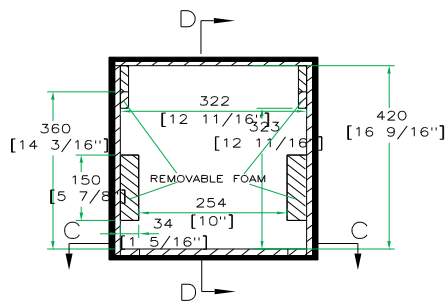
TOP VIEW OF COVER



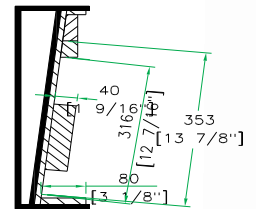
B-B VIEW



C-C VIEW



TOP VIEW OF BASE



D-D VIEW

www.roadreadycases.com

Road Ready Cases 18120 S. Broadway St. Unit B Gardena, Ca. 90248- 3536
 ph: 310 767 1772 fax: 310 767 1798