



RR1200F

The ultimate hook-up of style and innovation, the RR1200F is constructed to hold-up to 1000 miles of abuse. The RR1200F may look ordinary by daylight, but when you turn-out the lights it, Watch Out and step back! It glows fluorescent green at night and under black lights! The RR1200F's rugged construction features our unique modular poly-foam padding system which allows you to create the perfect custom space for virtually any turntable on the market including industry standards like Technics 1200's, Vestax PDX2000 and Numark TT-X1 models. We also threw in a rear access cable port for no hassle connections. Hey, we're looking out for you.

Rugged Road Ready Features

- * Beefy, Stackable Ball Corners
- * Double Anchor Industrial Rivets
- * Recessed, Industrial Grade Latches
- * Recessed, Spring Loaded Handles
- * Industrial Grade Rubber Feet
- * Premium 3/8" Vinyl Laminated Plywood
- * Tongue and Groove Locking Fit
- * Rear Access Cable Port
- * Glow in the Dark Finish
- * ATA 300 Rating
- * Road Ready Limited Lifetime Warranty

Shipping Dimensions (inch): 21.7 x 17.7 x 10.6

Shipping Weight (lbs): 23.1

Product Dimensions (inch): 21.3 x 17.3 x 9.6

Product Weight (lbs): 19.8

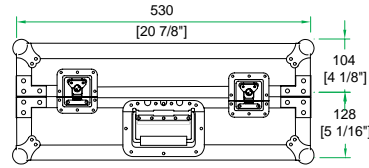
Shipping Dimensions (cm): 55 x 45 x 27

Shipping Weight (kg): 10.5

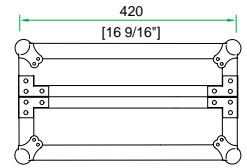
Product Dimensions (cm): 54 x 44 x 24.5

Product Weight (kg): 9

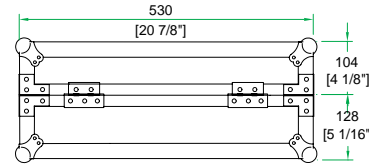
GLOW IN THE DARK DELUXE TURNTABLE CASE



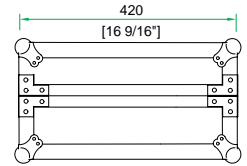
FRONT VIEW



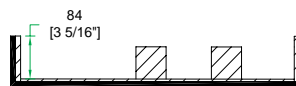
LEFT VIEW



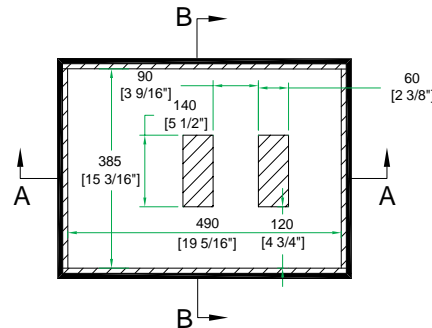
BACK VIEW



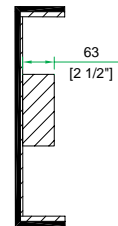
RIGHT VIEW



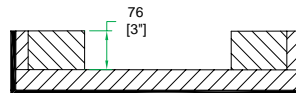
A-A VIEW



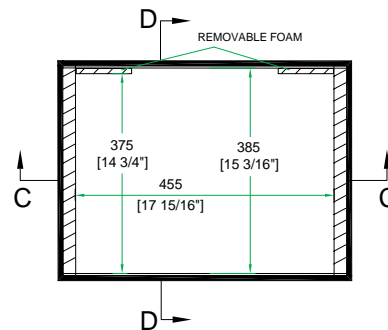
TOP VIEW OF COVER



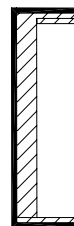
B-B VIEW



C-C VIEW



TOP VIEW OF BASE



D-D VIEW

www.roadreadycases.com

Road Ready Cases 18120 S. Broadway St. Unit B Gardena, Ca. 90248- 3536
 ph: 310 767 1772 fax: 310 767 1798