



# RR10MIX

Created for straight-up durability, the RR10MIX, is one tough cookie. A rugged 10" mixer case, the RR10MIX is designed to fit between any two Road Ready turntable cases and fits virtually all 10" mixers on the market (up to 18 1/2" x 7 3/4" x 10 3/4" wide). Designed with brawn and brains, the RR10MIX features a unique removable front panel for easy access to your CD drawer, a rear access cable port for no hassle connections, and adjustable modular foam lining so that you can create the perfect custom fit for your gear. Quick, Smart, Simple and 100% Road Ready

## Rugged Road Ready Features

- \* Beefy, Stackable Ball Corners
- \* Double Anchor Industrial Rivets
- \* Recessed, Industrial Grade Latches
- \* Recessed, Spring Loaded Handles
- \* Industrial Grade Rubber Feet
- \* Premium 3/8" Vinyl Laminated Plywood
- \* Tongue and Groove Locking Fit
- \* Front Access Panel
- \* ATA 300 Rating
- \* Road Ready Limited Lifetime Warranty

Shipping Dimensions (inch): 21.7 x 14 x 10.4

Shipping Weight (lbs): 21.3

Product Dimensions (inch): 21.5 x 13.2 x 9.8

Product Weight (lbs): 18.9

Shipping Dimensions (cm): 55 x 35.5 x 26.5

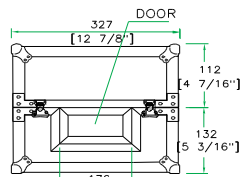
Shipping Weight (kg): 9.7

Product Dimensions (cm): 54.5 x 33.5 x 25

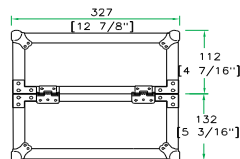
Product Weight (kg): 8.6

3/05

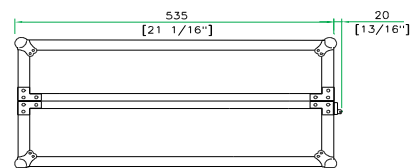
## Uni veral 10" DJ Mixer Case w/ Front Access Panel



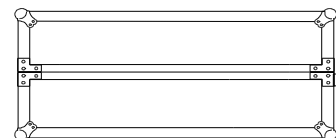
FRONT VIEW



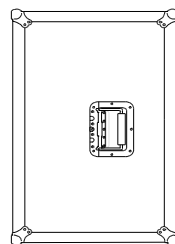
BACK VIEW



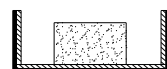
LEFT VIEW



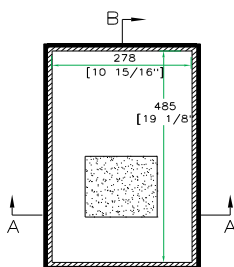
RIGHT VIEW



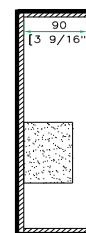
TOP VIEW



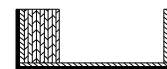
A-A VIEW



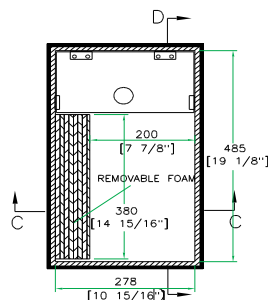
TOP VIEW OF COVER



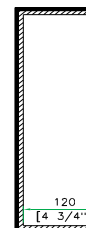
B-B VIEW



C-C VIEW



TOP VIEW OF BASE



D-D VIEW

[www.roadreadycases.com](http://www.roadreadycases.com)

Road Ready Cases 18120 S. Broadway St. Unit B Gardena, Ca. 90248- 3536  
 ph: 310 767 1772 fax: 310 767 1798