



Revolabs Solo™ TableTop Wireless Boundary Microphone

Benefits include:

Voice Optimized

Each microphone channel is optimized to the human voice for superior performance.

Interference Free Audio

Revolabs Solo™ microphones use digital spread spectrum and state of the art microphone technologies that reduce interference from other wireless devices and eliminate “buzzing” in the audio from cell phones.

Application Flexibility

The Solo Tabletop is compatible with all Revolabs Solo™ Systems containing MaxFlex™ technology, allowing unprecedented flexibility to customize audio for the many demanding needs of corporate collaboration.

Secure, Full Duplex (two-way) Audio

Each wireless microphone uses its own secure communication channel to maximize quality, security and control.

Clean, Professional Environment

No wires, sleek cool look.

Rugged Durability

Designed & made to handle abuse

Unmatched Audio Flexibility

The Revolabs Solo™ TableTop wireless boundary microphone provides unmatched audio flexibility and performance and in conferencing, education and other mission critical applications.

The TableTop can be used with all Revolabs Solo™ systems, which contain MaxFlex™ technology which allows users to customize their environments with combinations of boundary and wearable microphones for optimum audio performance.

TableTop boundary microphones are available in omni and directional microphone patterns for even more optimization.



The TableTop combines advanced audio capabilities with proven encryption for secure conversations anywhere, anytime, without the restriction of wires.

Applications:

- Boardroom conferencing
- Group audio and video conferencing
- Education
- Audio augmentation for large rooms



63 Great Road. Maynard, MA 01754
1-800-326-1088
www.revolabs.com
info@revolabs.com





Revolabs Solo™ TableTop

Technical Specifications

Charging Requirement

Executive Charger Base 5V DC, 2 Amps (switching power supply varies by country)

Range

100' (30 meters) approx. (no obstructions)

Available Pickup Patterns

Omni Directional
Cardioid

Battery

Lithium Polymer
8 hours talk time approx.

Charge Time

2 hours approx.

Audio Bandwidth

100-6800 Hz

Encryption

128-bit

Size

0.9" (2.4 cm) x 0.8" (1.95 cm) x 2.6" (6.68 cm)

Weight

0.05 lb (0.02 kg)

Shipping Weight

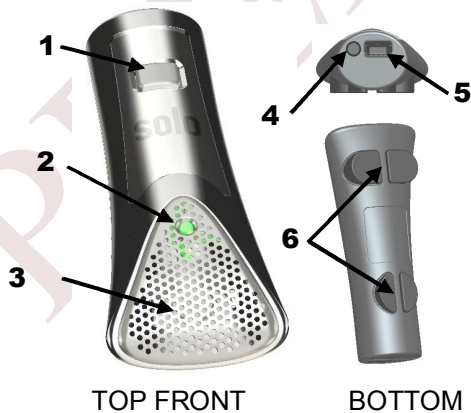
1.0 lbs (0.45 kg)

Environmental Requirements

Temperature
40° to 105° F (5° to 40° C)
operating Humidity
20% to 85%

Warranty

One year



1. Mute button — press to mute, un-mute and pair microphone.
2. LED display — visual status for mute, un-mute, and pairing.
3. Integral grille — protects internal parts (non-removable).
4. Audio Out port — 2.5mm, unbalanced
5. Charging port — docks to all solo battery charger units.
6. Rubber feet — non-slip, vibration absorbing pads.



63 Great Road, Maynard, MA 01754
1-800-326-1088
www.revolabs.com
info@revolabs.com

solo[®]
it's with you