

Installation and Operation Manual

SOLO – Desktop
Wireless Microphone System
Models 02-DSKSYS, 04-DSKSYSEU



Revolabs, Inc.

© 2006 REVOLABS, INC. All rights reserved. No part of this document may be reproduced in any form or by any means without express written permission from Revolabs, Inc. Product specifications are subject to change without notice.

solo – Desktop Manual 02-DSKMAN-PAP-11
Mfg Part #91-8601-10N00 September 2006 (Rev 1.7)

System Specifications

Dimensions, (L, W, H) and Weight

Desktop Charger Base

3.9" (10 cm) x 2.4" (6 cm) x 1.0" (2.56 cm), 0.5 lb (0.23 kg)

Wireless Microphone

0.9" (2.4 cm) x 0.8" (1.95 cm) x 2.6" (6.68 cm), 0.05 lb (0.02 kg)

Shipping Weight 1.5 lbs (0.68 kg)

Radio Frequency

02-DSKSYS 1.92 to 1.93 GHz (UPCS North America)

04-DSKSYSEU 1.88 to 1.90 GHz (DECT EU)

Connectors

Desktop Charger Base

Power – 5VDC, proprietary 0.7mm connector

Mini USB – 5 pin connector, USB 2.0

Audio unbalanced In/Out – 2.5mm

(Also used for telephone headset emulation.)

Tip: Audio Out (electret microphone equivalent level)

Ring: Audio In (line level), Shield: GND

Wireless Microphone

Power – proprietary 4 pin connector

Audio – 2.5mm mono audio

Power Requirements

Power Adapter 110 - 240VAC, 50-60Hz to 5VDC, 300mA

Battery

Lithium Polymer, up to 8 hours talk time

Charge Time 2.0 hours approx.

Range 65' (20 meters) approx. (no obstructions)

Audio Bandwidth 100-6800 Hz

Encryption 128-bit proprietary

Environmental Requirements

Temperature 40° to 105° F (5° to 40° C) operating

Humidity 20% to 85%

Warranty

Revolabs, Inc. warrants this product to be free of manufacturing defects. Repair or replacement of any defective part or unit (at the discretion of the Seller) will be free of charge for the period of one year.

Any attempt by the user to alter the equipment, or equipment damaged by negligence, accident, or Acts of God voids this warranty.

The Seller shall not be liable for any consequential damage resulting from the malfunction of this product. Should the user experience unsatisfactory performance from this equipment, contact the Seller to obtain instructions for return, or replacement, as deemed necessary.

This warranty is not transferable by the original end user.

Revolabs, Inc.
63 Great Road
Maynard, MA 01754
www.revolabs.com

Table of Contents

Safety and General Information.....	1
FCC User Information	1
European Compliance.....	3
System Components	5
solo Desktop Charger Base.....	6
Mute Button	6
Power Module	6
USB Connection.....	7
Headset Audio Connection.....	7
External Audio Connection.....	7
solo Wireless Microphone.....	8
Charging the Batteries.....	8
Using the Microphone	9
Pairing the Microphone to the Charger Base	10
Installation.....	12
Computer Software Set-up.....	12
Using with a solo Executive System	15
System Functions	16
LED Status Indications	17
Warranty	18
System Specifications.....	19

LED Status Indications

The following LED patterns are shown on either the Microphone or the Charger Base.

LED pattern	Meaning
Solid GREEN (Microphone only)	Confirmation of power-up.
Solid RED	Pairing mode, or confirmation of powering-down, or battery charging.
GREEN flash every 1.5 seconds	Microphone connected and un-muted.
Two RED flashes every 1.5 seconds	Microphone connected and muted.
YELLOW flash alternating with either GREEN or two RED flashes	Microphone connected, battery low.
Alternating RED, YELLOW, GREEN, YELLOW (Microphone only)	Searching for a connection, or out of radio range. The Microphone will try to re-establish the link for about 5 minutes, and then turn off automatically. The Microphone will beep five times every 30 seconds as a reminder to bring the Microphone closer to the Charger Base.
Alternating RED, YELLOW, GREEN, YELLOW	Unpaired.
Rapid RED flashes continuing for more than a few seconds	Radio congestion – it is not possible to make a radio connection because there are already too many nearby users of the UPCS band, or there is heavy radio interference. Other UPCS users will include some types of digital cordless phones, and other solo installations.
Groups of five rapid RED flashes	Unit is faulty. Please contact your AV service provider for advice.

System Functions

The following table shows the functions supported by the solo Desktop System:

Function		
Charger Base LED Status	Wireless Microphone LED Status	Action
Enter Pairing Mode		
Off	Off	Press the Microphone MUTE button for about 7 seconds (LED solid RED), and then press the MUTE button on the Charger Base for about 7 seconds (LED solid RED).
Mute / Un-mute		
On	On	A short press of the Microphone MUTE button or Charger Base MUTE button causes flashing RED LED on each unit indicating that the Microphone has audio muted. Pressing either MUTE button again will un-mute Microphone (flashing GREEN LED on each unit).
Turn Off Microphone		
On	On	Press and hold the Microphone MUTE button for about 10 seconds, until the LED stays solid RED, and then release. Or Dock the Microphone into the Charge Base for less than 2 seconds.
Turn On Microphone		
Off	Off	Press and hold the Microphone MUTE button for about 3 seconds, until the LED shows solid GREEN. Or Dock the Microphone into the Charge Base for at least 4 seconds.

Safety and General Information

IMPORTANT INFORMATION ON SAFE AND EFFICIENT OPERATION. READ THIS INFORMATION BEFORE USING YOUR DEVICE.

FCC User Information

FCC Registration Number: 0014898290

FCC ID Number: T5V02DSKSYS

FCC ID Number: T5V01EXEMIC

solo Desktop Charger

solo Desktop Microphone

FCC Notice to Users

Users are not permitted to make changes or modify the equipment in any way. Changes or modifications not expressly approved by Revolabs, Inc. could void the user's authority to operate the equipment.

This device complies with Part 15 of the FCC Rules.

Operation is subject to the following two conditions: (1) this device may not cause harmful interference, and (2) this device must accept any interference received, including interference that may cause undesired operation.

IMPORTANT NOTE: Federal Communications Commission (FCC) Radiation Exposure Statement – This equipment complies with FCC radiation exposure limits set forth for an uncontrolled environment.

Industry Canada Notice to Users

Operation is subject to the following two conditions: (1) This device may not cause interference and (2) This device must accept any interference, including interference that may cause undesired operation of the device Ref IC: RSS 210 Sec. 5.11. The term "IC:" before the certification/registration number only signifies that registration was performed based on a Declaration of Conformity indicating that Industry Canada technical specifications were met. It does not imply that Industry Canada approved the equipment. See Ref IC Self-Marking 6(f) and RSP-100 Sec. 4.

IC ID Number: 6455A-02DSKSYS solo Desktop Charger
IC ID Number: 6455A-01EXEMIC solo Desktop Microphone

Restricted use with certain medical devices

Hearing Aids

Some devices may interfere with some hearing aids. In the event of such interference, you may want to consult with your hearing aid manufacturer to discuss alternatives.

Other Medical Devices

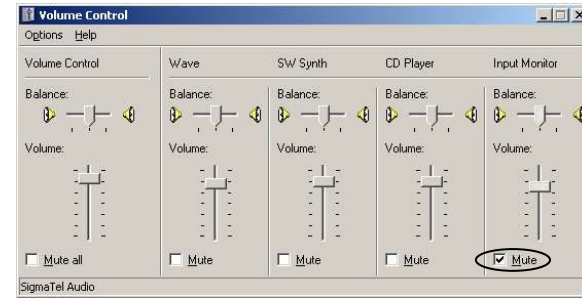
If you use any other personal medical device, consult the manufacturer of your device to determine if it is adequately shielded from RF energy. Your physician may be able to assist you in obtaining this information.

Export Law Assurances

This product is controlled under the export regulations of the United States of America and Canada. The Governments of the United States of America and Canada may restrict the exportation or re-exportation of this product to certain destinations. For further information contact the U.S. Department of Commerce or the Canadian Department of Foreign Affairs and International Trade. The use of wireless devices and their accessories may be prohibited or restricted in certain areas. Always obey the laws and regulations on the use of these products.

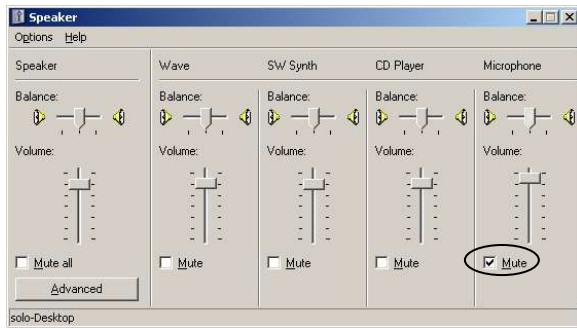
02-DSKSYS North America UPCS Usage Restriction

Due to the UPCS frequencies used, this product is licensed for operation only in the United States of America and Canada.



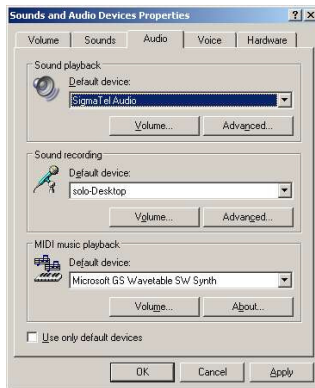
Using with a solo Executive System

The solo Desktop Microphone can be paired to a solo Executive Wireless Microphone System for users who wish to have a single microphone to use in both the office and in the conference room. This is accomplished by pairing the Desktop Microphone to the Executive Base Station and docking the Microphone in the Executive Charger Base. The Microphone can then be used in either system by placing the Microphone in the respective Charger for about 5 seconds.



IP telephony and computer telephony applications (Skype, for example) may also offer options for controlling the audio levels and playback capabilities. Please consult the application guide for the software package for additional instructions.

To playback audio through the internal or external speakers of the computer instead of the earpiece, change the Sound playback Default device to your regular audio codec (SigmaTelAudio in this example) and click on Apply or OK.



Note: Laptop computers with built-in microphones may continue to operate even when the solo-Desktop software is running. To prevent the built-in microphone audio feeding through to the speakers, check the Mute box on the Input Monitor on the laptop audio program Input Monitor, as shown below.

04-DSKSYSEU European Union Usage Restriction
Due to the frequencies used, this product is licensed for operation only in the European Union countries.

European Compliance

This equipment has been approved in accordance with Council Directive 1999/5/EC "Radio Equipment and telecommunications Equipment."



Conformity of the Equipment with the guidelines below is attested by the CE mark.

Model Numbers:

04-DSKSYSEU-BLK-11

solo Desktop Charger

03-EXEMICEU-BLK-11

solo Microphone

Standards to which Conformity is declared:

RF

ETSI EN 301 406 V 1.4.1 03/2001

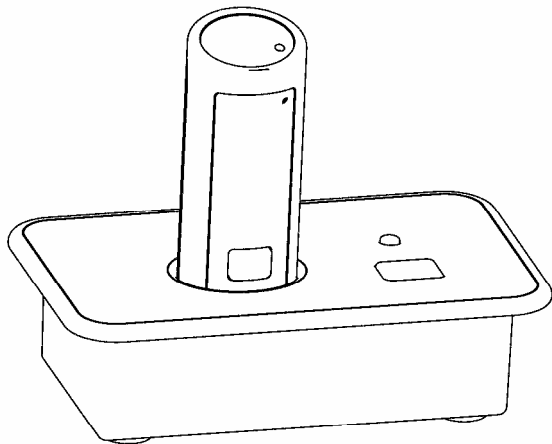
EMC

ETSI EN 301 489-6 v1.2.1 (2002-04)

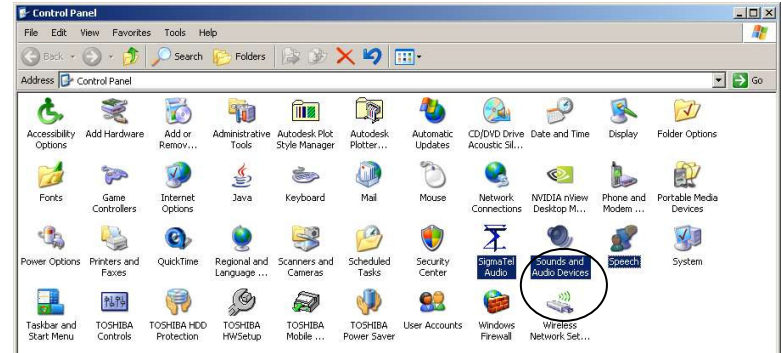
Introduction

Congratulations on the purchase of a Revolabs digital wireless communication system! We are pleased that you have chosen the Solo Desktop Wireless Microphone System with 1.9 GHz DECT technology. The Solo Desktop provides high band-width audio from a compact wireless microphone enabling reliable, secure and un-tethered personal communication.

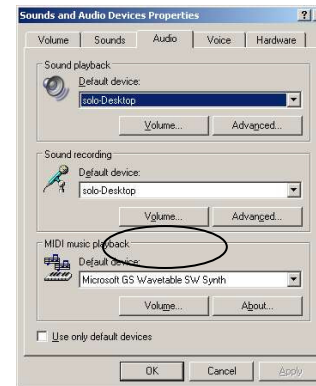
The Solo Desktop Wireless Microphone System is a unique marriage of innovative technology and ergonomic stylish design. This product enhances audio communication in both personal and enterprise applications. The system uses Multi-Carrier, Time Division Multiple Access and Time Division Duplex (MC/TDMA/TDD) radio transmissions both to and from the microphone. This means that the system can co-exist with other wireless products such as wireless LANs (802.11 B&G) and cellular phones, and eliminates “buzzing” in the audio from cell phones.



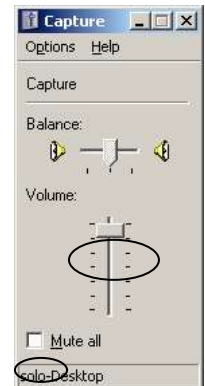
To modify the default microphone earpiece audio output settings open the control panel and then open Sounds and Audio Devices.



The solo-Desktop audio codec software will be selected and shown similar to the following screen (dependent on Windows operating system and other audio software previously installed).



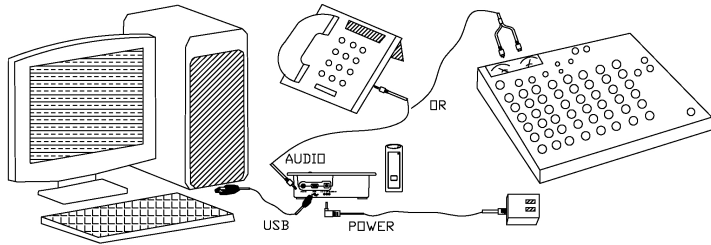
Opening the Volume settings for “Sound recording” shows the levels selected for the microphone input (Capture) on the computer. Make sure that the level for the Microphone is close to the top (maximum) and that the Mute box is not checked.



Opening the Volume settings for “Sound playback” allows you to control what you hear in the Microphone’s earpiece. Adjust the speaker level at the master Volume control if necessary. To prevent the Microphone directly feeding back its own audio to the earpiece (i.e. “sidetone”), check the “Mute” box in the “Microphone” volume control panel. It may be necessary to use the Options-Properties menu to display the “Microphone” volume control.

Installation

The solo Desktop system is easily installed into either the office or conference room environment. Simply plug the power supply into a convenient outlet and attach the USB cable to a computer or laptop, or connect one of the 2.5mm audio cables to an audio system or telephone headset port.



Computer Software Set-up

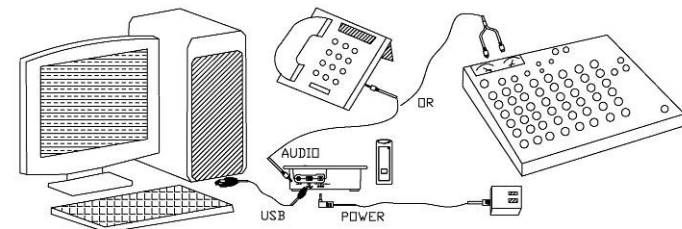
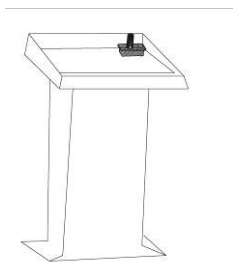
Use the supplied cable to connect the mini USB connector to the Charger Base and the standard end to your computer USB port. Your computer will alert you that it has found new hardware, and the **solo-Desktop** operating software will automatically load.

It is possible to configure your computer settings to playback audio through the earpiece attached to the microphone (default settings) or through the computer speakers (internal or desktop). The examples shown below are using the Windows XP Operating System Classic settings - other Windows operating systems might look slightly different.

System Components

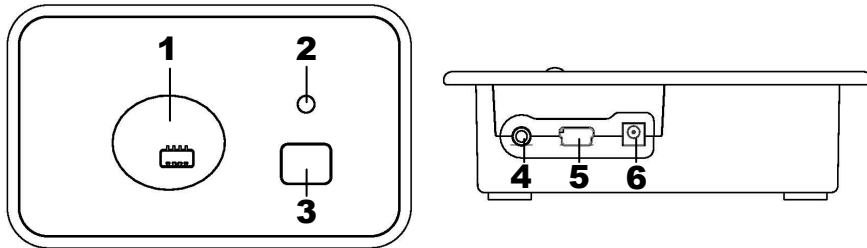


Your solo Desktop System package contains a compact Charger Base, a bi-directional (full duplex) wireless microphone, a volume adjustable earpiece, a 5V power supply, a USB cable, a headset cable, an external audio cable and a quick release lanyard. There are many features that this system provides that increase the productivity of personal communication whether in standard hands free phone use, IP telephony, or even in large group conference applications.



solo Desktop Charger Base

The Charger Base is used for storing and charging the Microphone when not in use. The Microphone must be properly inserted into the base and seated flush for charging to occur.



1. Charger Bay — charges Microphone
2. LED indicator — mute and pairing status indicator
3. **MUTE** button — duplicates the Microphone mute function
4. **AUDIO** port — 2.5mm analog in/out headset connection or external audio connection
5. Mini **USB** connector — computer audio connection
6. **POWER** connector — power supply input

Mute Button

Pressing the **MUTE** button toggles between muting (flashing RED LED status) and un-muting (flashing GREEN LED status) the Wireless Microphone. **Note:** Pressing the **MUTE** button on a Microphone will similarly toggle between mute and un-mute and show on both status LEDs.

Power Module

The Charger Base requires 5VDC power. Plug the supplied AC adapter into a convenient 110-240VAC, 50-60Hz power outlet and the adapter into the power connector. The power LED on the Charger Base will flash RED for a few seconds then turn off.



10 seconds, it means that the Microphone needs to be paired to the system.

Microphone Pairing Instructions

1. Make sure the Microphone is turned OFF (no LED activity). If the unit is ON, press and hold the **MUTE** button for 10 seconds until the LED turns solid RED (do not release when you hear two beeps), to turn the unit off, if needed. An alternative method of turning off is to place the Microphone in the Charger Base for less than 2 seconds.
2. Place the Microphone into pairing mode by holding the Microphone's **MUTE** button down for ten seconds. The LED will turn solid GREEN and then solid RED. Release the **MUTE** button. The Microphone unit is now in pairing mode.
3. Within 5 seconds, push and hold the Charger Base's **MUTE** button for six seconds to enter into pairing mode. The LED will be solid RED until pairing is confirmed, as indicated by a short GREEN flash followed by flashing RED on both the Microphone and the Charger Base. If pairing fails on either unit, the LED will flash alternately GREEN and RED for a few seconds.

to return the microphone. If the microphone is moved back into range within 5 minutes the connection will automatically be re-established to its original state, and the beeping will cease. If not, the microphone will turn off after 5 minutes.

Adjusting the Volume

The volume of the Microphone is set at the factory and cannot be adjusted on the Wireless Microphone. It may be possible to change the volume on computer or IP calls by adjusting the software control parameters (see Computer Software Settings, below).

Note: *Moving the Microphone closer to the mouth will increase the volume.*

To change the volume on the earpiece, use the dial on the earpiece wire. Turning the dial towards the earpiece will increase the volume, and turning the dial towards the Microphone will decrease the volume.



Pairing the Microphone to the Charger Base

“Pairing” creates an association between the Wireless Microphone and the Charger Base with a unique electronic serial number. When the Microphone and Charger Base have been previously paired, the Microphone will automatically try to connect to the Charger Base whenever it is lifted from the Charger Base.

Remember, the Microphone is always muted (flashing RED LED) when it is removed from the Charger Base and the MUTE button needs to be pressed to make it “live” (flashing GREEN LED).

The Microphone in new systems come paired to the Charger Base. However, if a replacement Microphone is ever required, it will need to be manually “paired.”

If a Microphone is lifted from the Charger Base and the Microphone LED slowly flashes alternating RED and GREEN for

USB Connection

Use the supplied cable to connect the mini USB connector to the Charger Base and the standard end to your computer USB port. Your computer will alert you that it has found new hardware, and the **solo-Desktop** operating software will automatically load. See the user settings specified above for adjusting the audio connections to your liking.



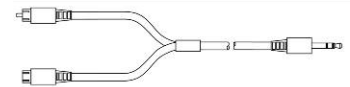
Headset Audio Connection

The Desktop System can be used as a full-duplex, hands-free, wearable headset. If your telephone has a port for a headset, use the supplied double ended 2.5mm cable to connect from the Charger Base audio port to your desktop phone. Phone call audio will be sent from the Microphone, and received by attaching the included earpiece to the Microphone audio port. Phone calls should be answered conventionally by lifting the handset, and then pressing the “Headset” function on the phone. Press the “Headset” button on the phone again to go back to using the telephone handset.



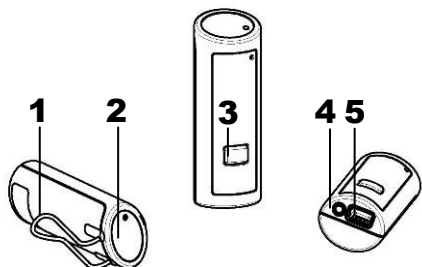
External Audio Connection

The Desktop System also provides a cable for connecting the Charger Base to an external audio or conferencing system. This feature can be used to amplify a presenter at a lectern, for example. The 2.5mm to RCA cable included with the system allows for the unbalanced low level audio from the Microphone to be connected into a mixer or conferencing system using the RCA male jack. Further, output from the mixer or conferencing system can be connected to the RCA female plug to be heard through the earpiece connected to the Microphone.



solo Wireless Microphone

The wireless personal microphone is synchronized to the Charger Base and can be worn on the user's shirt pocket, lapel or on a lanyard. It provides high quality full duplex audio between the user and the computer and/or phone system. The system allows the wearer to step out of the office or conference room and still participate in the call.



1. Pocket Clip — attaches microphone to the user
2. LED Indicator — provides visual indicator of microphone status
3. **Mute** Button — controls multiple microphone functions
4. Earpiece Jack — accepts the 2.5mm plug for the earpiece
5. Charging Port — accepts the storage base battery charger

Charging the Batteries

How to Charge

1. Place the Microphone into the Desktop Charger Base.
2. During charging, the Microphone status LED indicator is solid RED and remains on until charging completes and then turns off. The Charger Base status indicator remains off during charging. The Microphone is always muted while in the Charger Base. The battery charges from fully depleted to fully charged in about two hours. It can be "quick-charged" to approximately 80% capacity in 45 minutes.
3. When charging completes, the Microphone RED LED turns off and Microphone is ready for use. **Note:** A fully charged battery provides approximately 8 hours of talk time.
4. If the Microphone is left in the Charger Base for an extended period, the LED will turn on again indicating a top-up charge.

When to Charge

First-time use — before you can use the Microphone, charge it for 8 hours or overnight in the Charger Base (until microphone LED turns off).

Recharging — when the Microphone LED begins flashing alternating YELLOW and RED or YELLOW and GREEN, the battery needs recharging. Over time (years), batteries gradually wear down and require charging after a shorter period of use. This is normal.

The Lithium Polymer rechargeable battery that powers the Microphone is not user serviceable. Please see the Revolabs Knowledge Base website area (www.revolabs.com) for replacement instructions and to assure that the proper disposal method is used. **Warning: Never dispose of batteries in a fire because they may explode.**

Using the Microphone

1. Remove the Microphone from the Charger Base. The Microphone turns on and mutes automatically when removed from Charger Base (flashing RED LED).
2. The Wireless Microphone has a clip on the back which allows the Microphone to be easily clipped onto a shirt pocket, blouse or lapel. The Microphone can also be clipped on to a lanyard and be worn around the neck. Attach the Microphone as close to the mouth as possible (within 6 - 12 inches is recommended).
3. With the Microphone in the wearing position, un-mute the Microphone by pressing and releasing the **MUTE** button (confirm by viewing the flashing GREEN LED on both the Microphone and Charger Base).
4. To turn off the Microphone, return it to the Charger Base. You may also turn it off manually by pressing and holding the **MUTE** button for approximately 10 seconds until the LED turns solid RED and then releasing the mute button.
5. If the Microphone is moved out of range of the Charger Base (~65 feet) the connection will be dropped and the Microphone will mute (LED flashes alternating RED, YELLOW and GREEN). After 15 seconds the microphone will beep 5 times, and will continue beeping every 30 seconds to remind the user