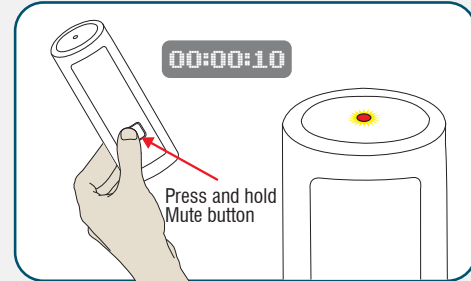


# Revolabs Quick Start Guide

## Pairing a Solo Wireless Microphone

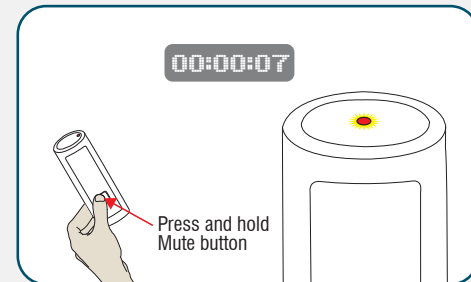
### Step #1

First make sure the microphone is turned OFF (no LED activity). If the unit is ON, press and hold the MUTE button for 10 seconds until the LED turns solid RED (do not release when you hear two beeps). Release the button to turn the unit off.



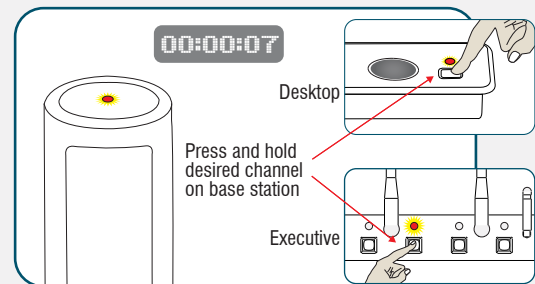
### Step #2

Next, place the microphone unit into pairing mode by holding the MUTE button down for seven seconds. The LED will turn solid GREEN and then solid RED. Release the MUTE button. The microphone unit is now in pairing mode.



### Step #3

Finally, press and hold the pairing button on the Base Station for seven seconds until the LED turns solid RED. On a Solo Desktop use the MUTE button. On a Solo Executive use the desired channel pairing button on the front of the unit. Release the pairing button and within a few seconds there will be a quick GREEN flash followed by flashing RED on both the microphone and the Base Station indicating muted audio. Pairing is now complete, and should not be required again.



You are now ready to experience wireless, rechargeable and secure (encrypted) collaborative freedom.