



# Cough Drop Switchers

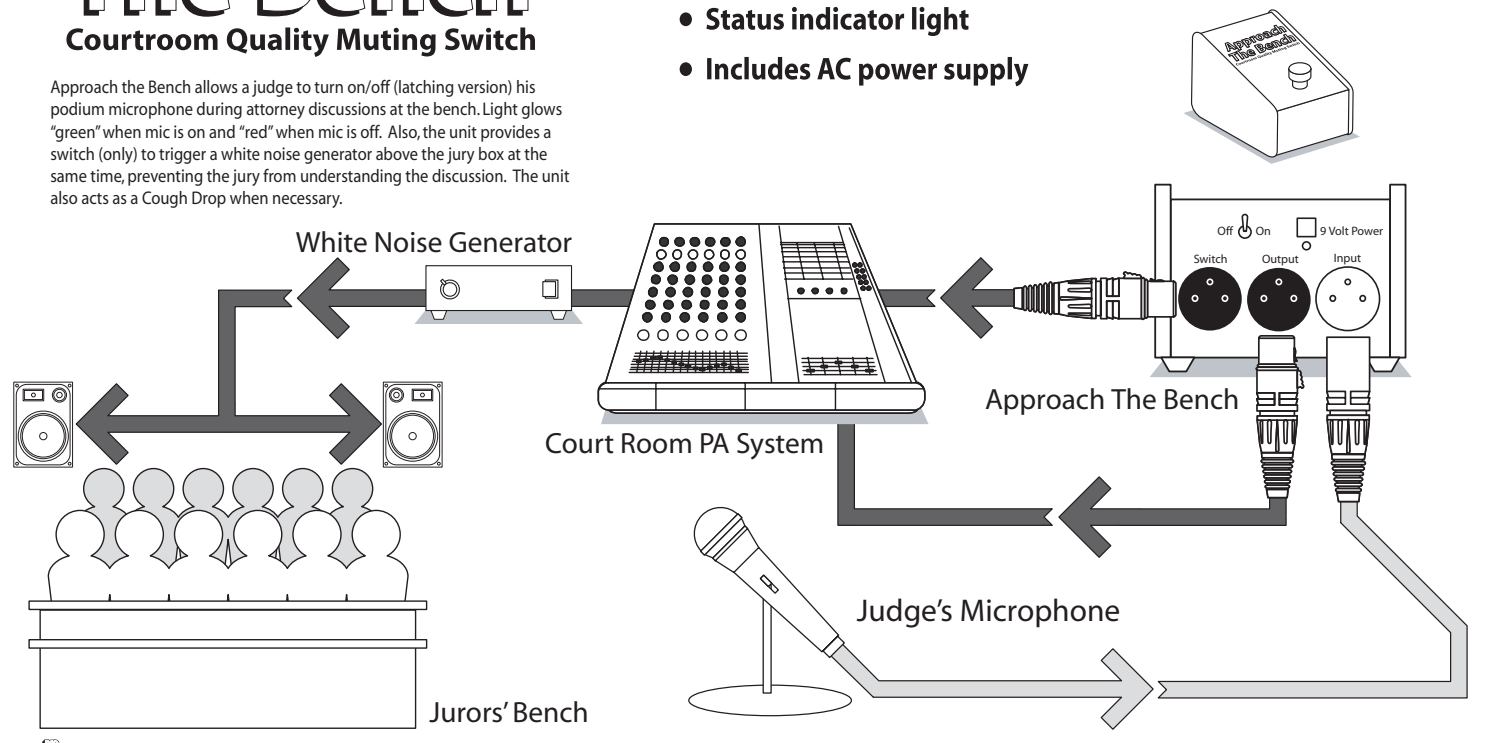


## Application Information

### Approach The Bench Courtroom Quality Muting Switch

Approach the Bench allows a judge to turn on/off (latching version) his podium microphone during attorney discussions at the bench. Light glows "green" when mic is on and "red" when mic is off. Also, the unit provides a switch (only) to trigger a white noise generator above the jury box at the same time, preventing the jury from understanding the discussion. The unit also acts as a Cough Drop when necessary.

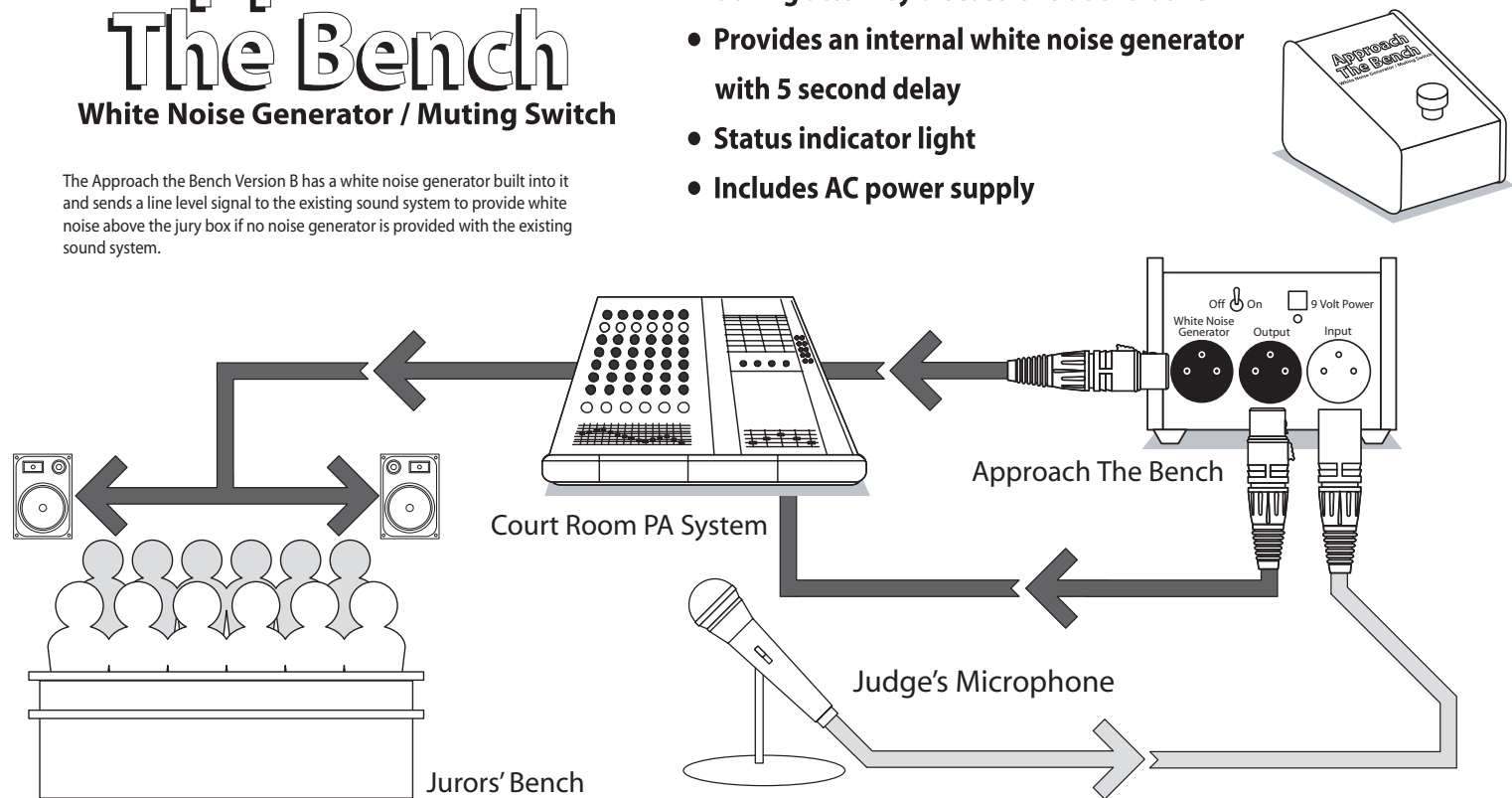
- Allows the judge to turn on or off the podium microphone during attorney discussions at the bench
- Switch is provided for outboard white noise generator
- Status indicator light
- Includes AC power supply



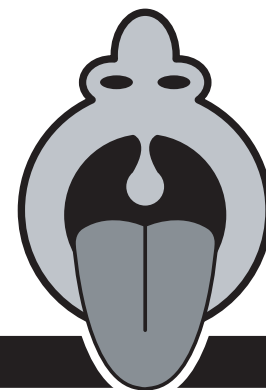
### Approach The Bench White Noise Generator / Muting Switch

The Approach the Bench Version B has a white noise generator built into it and sends a line level signal to the existing sound system to provide white noise above the jury box if no noise generator is provided with the existing sound system.

- Allows the judge to turn on or off the podium microphone during attorney discussions at the bench
- Provides an internal white noise generator with 5 second delay
- Status indicator light
- Includes AC power supply



# Cough Drop



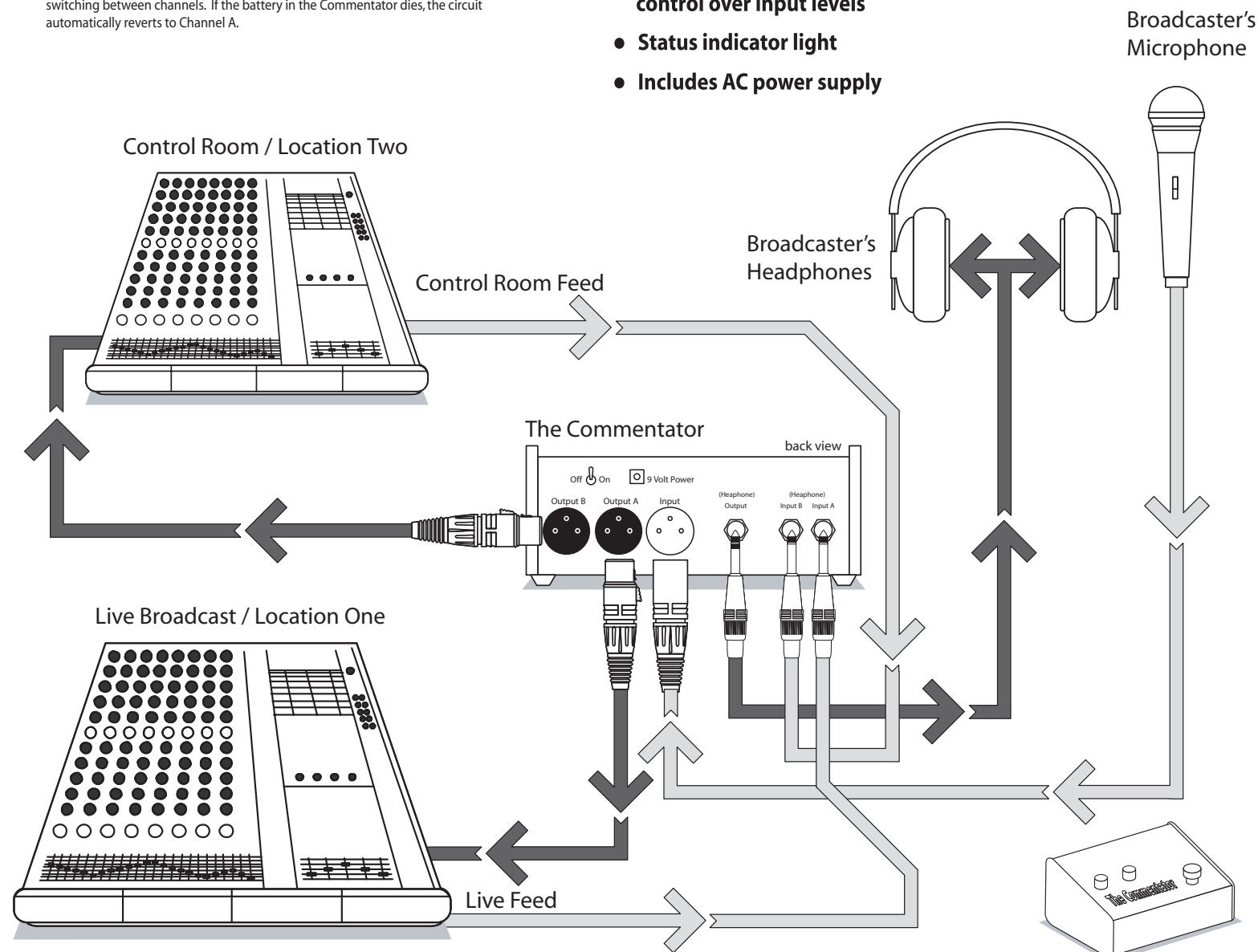
## Application Information

### The Commentator

The Commentator provides sportscasters with two unique functions. First it simulates a Panic Button by allowing the sportscaster to talk to his producer/statistician "off air" during a live broadcast through Channel B and then resumes the live feed through Channel A at the push of a switch. Channel B becomes the Cough Drop, although the producer will hear the cough.

Secondly, the live broadcast feed and the producer/statistician feed are summed into a single stereo 1/4" headphone jack allowing the broadcaster to hear both signals at once. Independent volume controls for each input provide mixing capabilities. The sportscaster can be in constant communication with the support team at all times, conveniently and with no problems for the on-air broadcast. Also, phantom power from the FOH mixer powers both channels when a condenser microphone is being used, and there is no "pop" switching between channels. If the battery in the Commentator dies, the circuit automatically reverts to Channel A.

- Allows a broadcaster's microphone to be switched between output A (broadcast) or output B (statistician / producer)
- Two 1/4" T/R/S inputs for input A (live broadcast) and input B (statistician / producer)
- Inputs are summed into a single headphone jack allowing the broadcaster to hear both signals
- Mixed controls for each input allow complete control over input levels
- Status indicator light
- Includes AC power supply





# Cough Drop Switchers

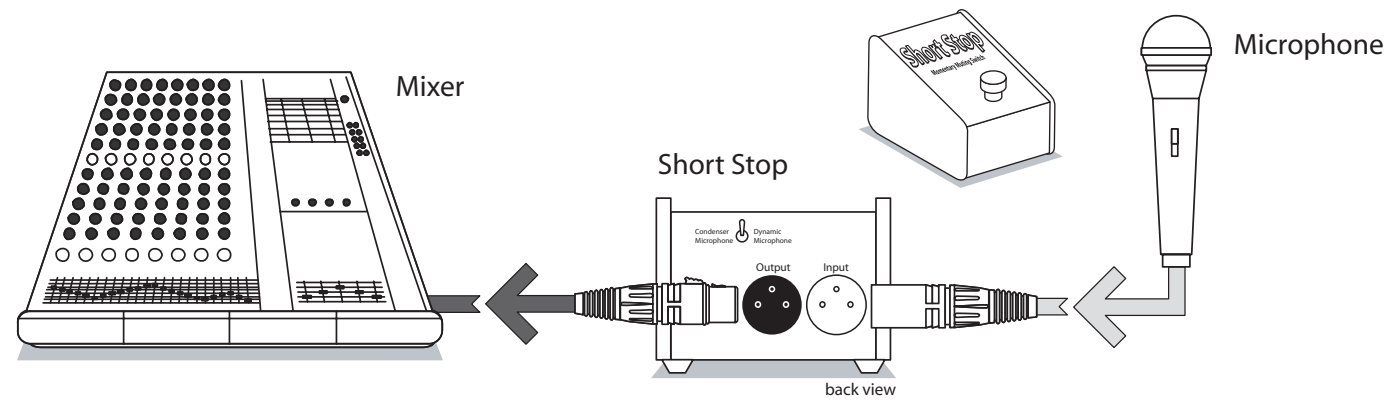
## Application Information

### Short Stop

#### Momentary Muting Switch

Short Stop represents a name change for the original Pro Co Cough Drop, a passive momentary microphone-muting switch. To operate, the user's microphone cable is plugged into the Short Stop and the Short Stop is plugged into the sound system. If the entertainer has to cough or clear his/her throat, s/he steps on the Short Stop's momentary switch pressing and holding down the switch, muting the microphone's signal to the sound system for as long as necessary, preventing embarrassing sounds from reaching the audience. Releasing the foot-switch (which can easily be used as well as a hand-operated unit) allows the entertainer to resume normal communication with the audience.

- Momentary foot switch that allows operator to temporarily mute microphone
- Selection switch for dynamic or condenser microphone

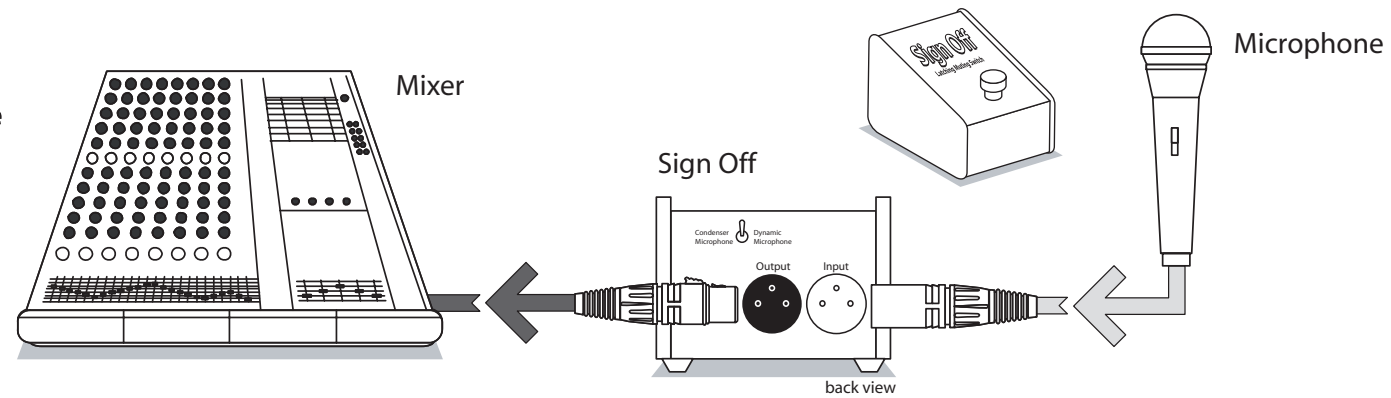


### Sign Off

#### Latching Muting Switch

Sign Off represents a name change for the original Pro Co Cough Drop L version, a passive latching microphone muting switch (press to mute, press again to unmute). To operate, the user's microphone cable is plugged into the Sign Off and the Sign Off is plugged into the sound system. If the entertainer has to cough or clear his/her throat, the user steps on the Sign Off to mute the microphone's signal. Pressing the switch again unmutes the microphone and resumes regular communication with the audience. Designed especially for singing drummers, the Sign Off will work well for any entertainer who needs a latching rather than a momentary microphone muter.

- Latching foot switch that allows the operator to turn a microphone on or off at the press of a button
- Selection switch for dynamic or condenser microphone
- Great for singing drummers

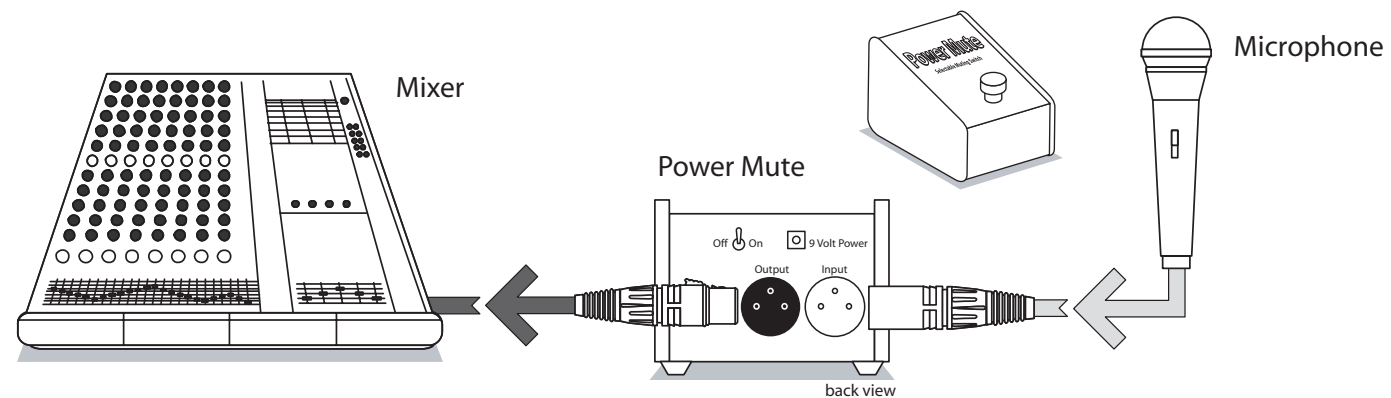


### Power Mute

#### Selectable Muting Switch

Power Mute is an active Cough Drop, providing all the functions of the Short Stop and the Sign Off, also with a status indicator. Also, the Power Mute can be used in momentary-switch mode or in latching-switch mode, pre-selectable with switches found inside the unit's battery cover. When light is green, microphone is always "on"; when light is red, microphone is always "off".

- Selectable either as a momentary (press to mute or press to talk) or latching (mic on / mic off) muting switch
- Status indicator light
- Includes AC power supply

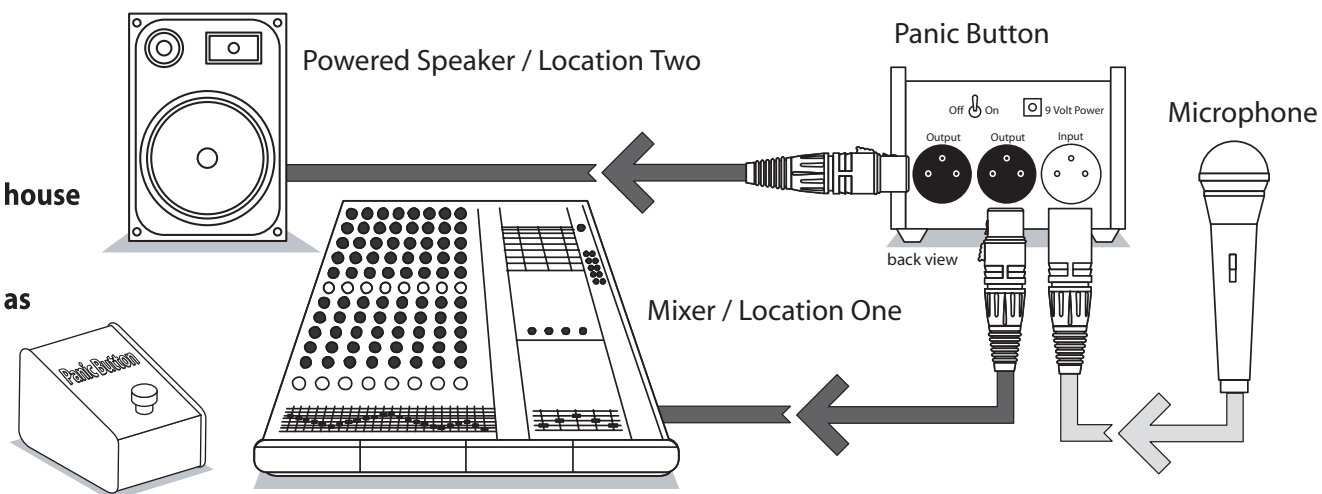


### Panic Button

Panic Button was designed for live entertainers on stage to switch their microphone signal from Output A (Front of House normal operation) to Output B so they can contact their personal roadie or monitor mixer with emergency calls for help (broken string, dead battery, spilled drink).

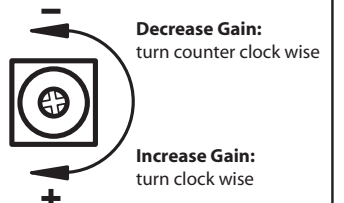
Channel B can act as a Cough Drop although the roadie or monitor mixer can hear the cough. Also, phantom power from the FOH mixer powers both channels when condenser microphones are being used, and there is no "pop" switching between channels. If the battery in the Panic Button dies, the circuit automatically reverts to Channel A.

- Allows entertainers to switch the microphone signal path from front of house to backstage or alternate location.
- A/B switch also allows unit to be used as a muting switch
- Status indicator light
- Includes AC power supply



#### Gain Adjust

Gain adjustments can only be made on "active" cough drop units. This excludes the Short Stop and Sign Off.

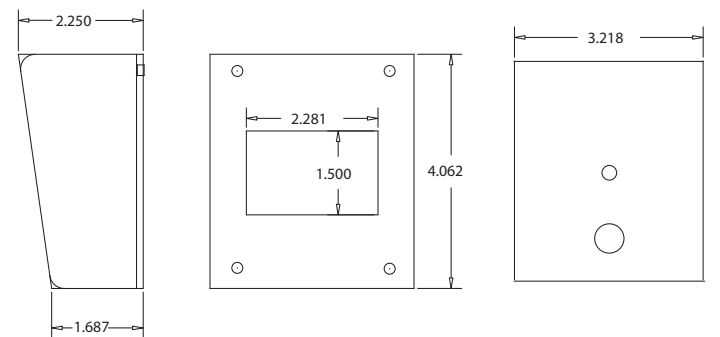


#### Dip Switch Settings Guide

Selectable dip switches are only available on "active" cough drops models. This excludes the Short Stop and Sign Off.

- |   |  |
|---|--|
| <b>1. Latch Action (LCH)</b><br><input checked="" type="checkbox"/> Latching<br><input type="checkbox"/> Momentary                | <b>3. Mode (MODE)</b><br><input checked="" type="checkbox"/> Mute<br><input type="checkbox"/> A-B    |
| <b>2. Push Action (PUSH)</b><br><input checked="" type="checkbox"/> Push To Talk (A)<br><input type="checkbox"/> Push To Mute (B) | <b>4. Ground Lift</b><br><input checked="" type="checkbox"/> Ground<br><input type="checkbox"/> Lift |
- 

#### Dimensions (small body cough drop units)



#### Dimensions (large body cough drop units)

