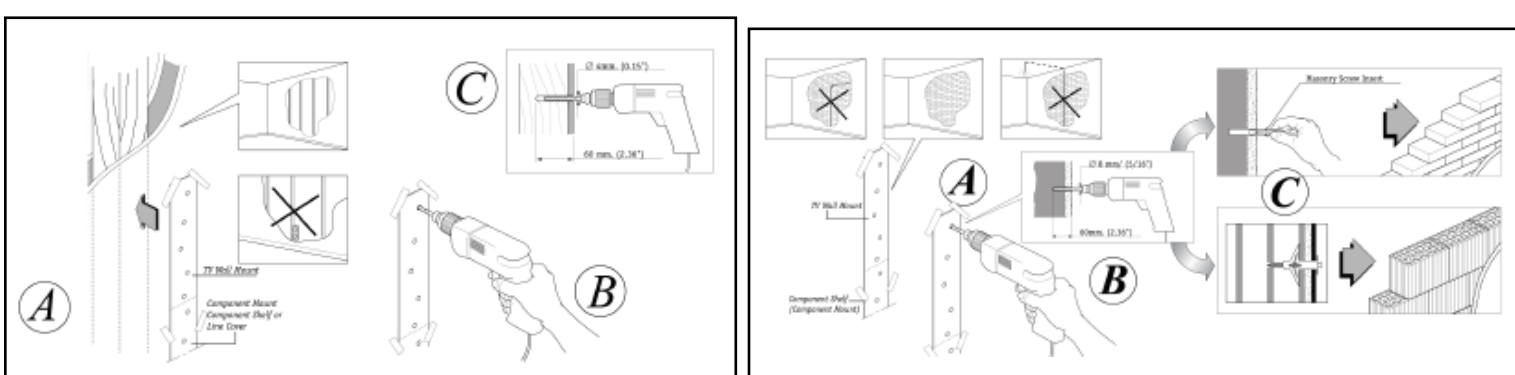


Step 1 (For Wood Frame Installation):

This product **MUST** be mounted to a wood framing stud. It may be necessary to use a stud sensor to locate the wood stud framing near the desired mounting position, or if using Component Shelf under an existing Video Basics TV Wall Mount align the mounting plate directly under the installed wall mount. Using the supplied mounting hole template, mark the location of the holes using a sharp device (i.e. drill bit or ice pick) to penetrate the drywall. (NOTE: Mark the center of the stud after finding the physical sides of the stud. Framing members are typically 1 1/2" wide and separated by 16 inches to the center of the stud.) See Wood Diagram Fig. A. Drill mounting holes to the specified depth (2.36"/60mm) using the recommended drill bit (0.15"/4mm.)

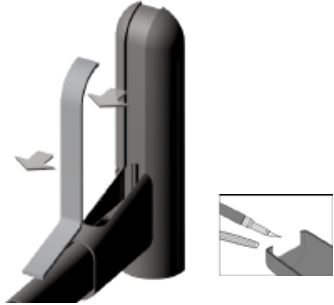


Step 1 (For Masonry Wall Installation):

For masonry installation, use the supplied mounting hole template to mark the location of the mounting holes. Drill mounting holes to the specified depth (2.36"/60mm) using the recommended drill bit (0.15"/4mm.)

Step 2:

Using the lag screws (B), mount the Wall Plate/Arm to the wall. If mounting to a masonry wall, the Masonry Screw Inserts (A) must be inserted into the wall prior to applying the lag screws (B). Tighten using a Phillips screwdriver, or by using a drill with the appropriate Phillips adapter.



Step 3:

Locate the Cable Cover (2) and remove the Cable Concealment Cover. See Fig. 3a. Use a utility knife (not provided) to cut out the cable slot located on the bottom of the Cable Cover. See Fig. 3a. Slide the Cable Cover over the Mounting Arm and slide back towards the Mounting Plate. See Fig. 3b. Do not click the Cable Cover over the mounting plate, as cables need space to travel down the mounting plate once your TV has been placed on the TV tray.



Step 4a:

Insert M8 Bolt (E) and Washer (D) into the inside of the Mounting Arm and thread upwards through the appropriate hole.

Step 4b:

Place TV Tray Swivel Disc (6) onto Mounting Arm and thread M8 Bolt (E) through it. Make sure that the Swivel Disc is mounted properly onto the Mounting Arm with the arrow inside the tray pointing away from the wall. Failure to do so will cause the Swivel Disc to function improperly. See Fig. 4b.

Step 4c:

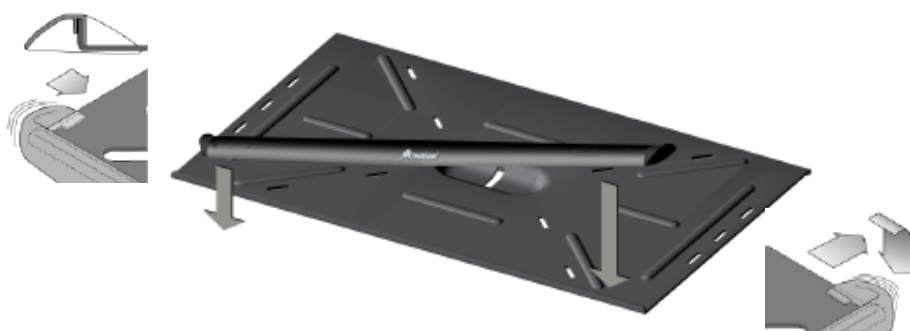
Remove the adhesive back of the Foam Disc (7) and place directly on top of the TV Tray Swivel Disc. The Foam Disc prevents the TV tray from slipping and must be placed on top of the TV Tray Swivel Disc.

Step 4d:

Place TV Tray (3) onto the Swivel Disc and pass M8 Bolt (E) through the center slot. Finish installation off by adding TV Tray Nut Plastic Washer (8) over the M8 Bolt (E) and add M8 Lock Nut (F). Securely tighten the M8 Bolt using Allen Wrench (G). NOTE: The tilt function of the Video Basics Wall Mount relies on the tightness of the TV Tray Nut Plastic Washer. Tilt adjustments must be made by loosening the M8 Bolt and tilting the TV Tray to the desired level. Once adjusted, it is imperative to tighten the M8 Bolt again.

Step 4e:

Locate Nylon Security Strap. Feed the free end of the security strap through the top of the front Security Strap Slot. Pull the strap across the bottom of the TV tray, and thread it up through the other front security strap slot. Pull the strap until there is an equal amount hanging from each edge of the TV tray.



Step 5:

Locate TV Tray Front Cover (4) and place on the TV Tray as shown in Fig. 5. Begin by fastening one end of the cover to the tray, and then push the other side into place until it snaps securely onto the TV Tray. See Fig. 5.1 and Fig. 5.2



Step 6:

Locate Mounting Arm Cosmetic Cover, and slide it over the Mounting Arm until it is secure around the TV Tray Assembly from Step 4.

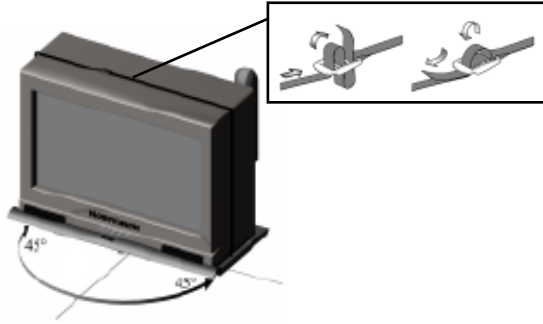


Step 7:

Place 1 square of the Adhesive Back Foam Squares (13) under each of the corners of your television. This will prevent scratching the surface of the TV Tray. Gently place your television onto the TV tray, making sure that it is placed squarely on the tray, and centered between the tray edges. Now pull the two strap ends up around the television, until they meet at the center of the TV's top.

NOTE: If the security strap is not resting on a flat portion of the television's top, remove the strap, and then re-install it through the forward set of security strap slots. Thread the strap end through the strap buckle as shown in (Fig. 7.) Pull the Strap until it is tight enough so that the strap can not be pulled away from the sides of the television.

CAUTION: The Security Strap is only designed to prevent mild bumps or shocks from dislodging the television from the TV tray. More severe shocks can result in the television becoming dislodged from the TV tray, and falling to the floor. Always exercise care around a television on a TV mount.



Step 8:

Your Video Basics Wall Mount comes complete with 2 extra cable covers to hide wires routed to a wall outlet. Please refer to the diagrams below for proper installation of the cable covers.

Cable Cover Parts List

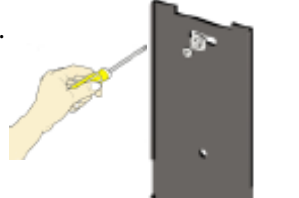
1. Cable Cover Alignment Tab
2. Cable Cover
3. Wall Plate
4. Screw Insert (2)
5. 4mm x 50mm Lag Screw (2)
6. 7mm x 12mm x 1.5mm Washer (2)
7. Adhesive pad



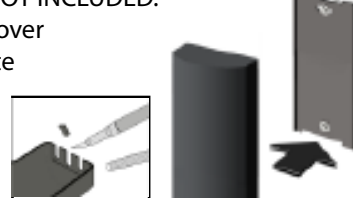
Place adhesive pad to the wall side of the Cable Cover Wall Plate.



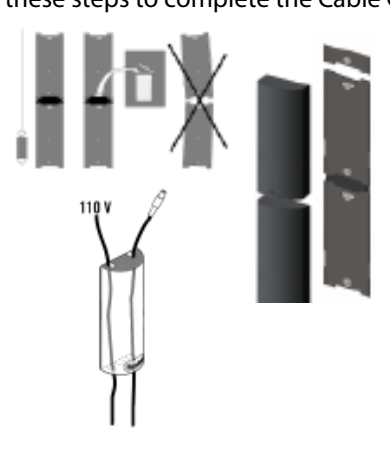
Install the Cable Cover wall plate using the same method used to mount TV Wall Mount in step 1 of this manual. Push screw insert into wall. Slide washer over screw and hand tighten using a phillips head screw driver.



Locate plastic Cable Cover and remove tabs in the top and bottom using a utility knife. NOT INCLUDED. Snap Cable Cover onto wall plate to finish installation.



Align additional Cable Covers and repeat these steps to complete the Cable Cover to a wall outlet.



Step 9:

With television secured to the Wall Mount, run the necessary power and video cables through the opening in the Cable Cover and thread through the opening cut in Step 3. Slide the Cable Cover towards the Mounting Plate and click it into position. Finish the installation by clicking the Cable Management Cover back into position on the Cable Cover.

