

# Large Universal Premium Tilt Flat Panel Mount

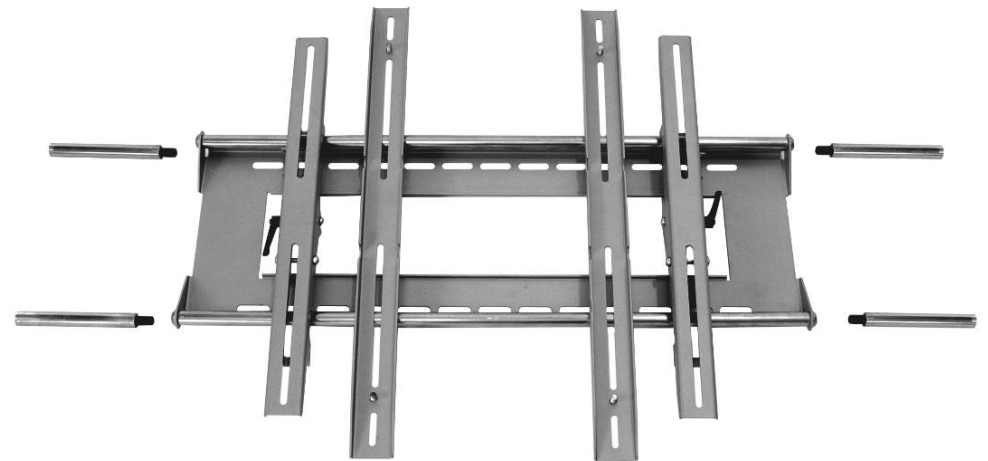
## Hardware List:

### Hardware Kit 1

Letter	Qty	Description
A	4	Philips Screws M4 x 16mm, Zinc
B	4	Philips Screws M4 x 36mm, Zinc
C	4	Philips Screws M5 x 16mm, Zinc
D	4	Philips Screws M5 x 36mm, Zinc
E	4	Philips Screws M5 x 46mm, Zinc
F	4	Philips Screws M6 x 16mm, Zinc
G	4	Philips Screws M6 x 36mm, Zinc
H	4	Philips Screws M6 x 46mm, Zinc
I	4	Philips Screws M8 x 16mm, Zinc
J	4	Philips Screws M8 x 36mm, Zinc
K	4	Philips Screws M8 x 46mm, Zinc

### Hardware Kit 2

Letter	Qty	Description
L	4	Square Washer
M	4	Safety Washer; 1/2" ID
N	4	3/8" Wall Anchors
	1	Push Pin
1	4	5/8" Spacer
2	4	3/4" Spacer
	1	Hex wrench
	4	3/8" Lag Bolt; 3 1/2" long
	4	Lag Bolt Washer



Wall Plate, Mounting Rails with Tilt Mechanism, Rod Extensions, Mounting Rail Extensions

## ***Determine the Mounting Location***

Measure the width and height dimensions of the plasma display.

Mark the wall with the desired location for the center of the display.

**Important:** Make sure that there is adequate mounting space available for the display, considering the display dimensions.

## ***The Mounting Guide***

Locate the supplied mounting guide. (Fig. 1)

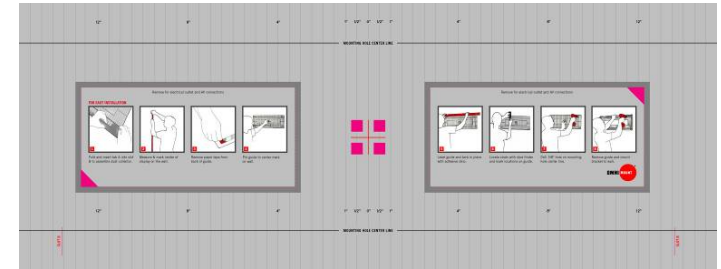
Fold the dust collector along the marked lines:

1. Fold main channel up.
2. Crease and fold the tab sections inward.
3. Fold outer portion of tab around the back of the guide, and then insert tab into slot.

Insert pin (supplied) into the center mark of the guide.

Remove the tape strip from the back of the guide.

Using the four sight holes, pin the guide to the center mark on the wall.



**Fig. 1**

Using a bubble level, precisely level the guide, and then press the adhesive backing against the wall to hold the guide in position.

Using an electronic stud finder, locate the center of the wooden studs. Mark the stud center positions directly onto the guide, along the Mounting Hole Center Line. Follow the vertical lines on the guide to transfer your marks to the opposite Mounting Hole Center Line.

**Note:** If mounting to masonry, simply mark the desired mounting hole locations directly onto the guide, along the Mounting Hole Center Line.

If cutting openings for an electrical outlet and/or A/V interconnect cables, carefully remove the perforated sections of the guide and then mark and cut the wallboard.

**Wooden Studs** - Use a 1/4" drill bit, and drill 4 mounting holes into the center of the studs.

**Masonry** - Use a 1/2" masonry bit, and drill 4 mounting holes. Insert wall anchors (N) into the mounting holes, and lightly tap them flush to the wall with a hammer.

**Caution:** Wall anchors should only be used for masonry mounting. **NEVER** use wall anchors to mount the U3 to drywall.

Carefully remove the guide from the wall, and discard.

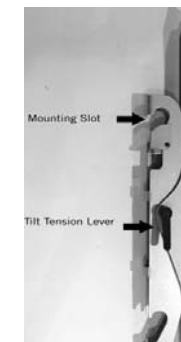
**Note:** Be sure to hold the guide in an upright position so as not to spill the collected dust.

Mount the wall plate to the wall with supplied 3/8" lag bolts and washers.

## ***Attach the Mounting Rails***

Consult the supplied Hardware Cross Reference list, and locate the required hardware for your display.

For proper installation, make sure that each rail mounting slot is facing down, and that the tilt tensioning lever is positioned to the outside of the display. (Fig. 2) Use the selected screws and the square washers (L) to mount the rails to the back of the plasma display. Adjust the rails to equal heights on the back of the display using the alignment marks on the rails as a reference. (Fig. 3) Once aligned, tightly secure the mounting screws.



**Fig. 2**



**Fig. 3**

Some Plasma displays have curved backs with recessed mounting lands (Fig. 4), which will require the use of a spacer (Fig. 5). For these displays, install the 5/8" (1) spacer between the display and the rail.

**Note:** Align tab in spacer with slot in mounting rail.

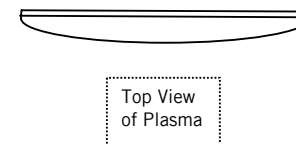


Fig. 4

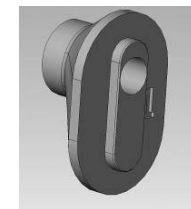


Fig. 5

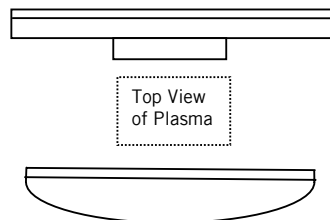


Fig. 6

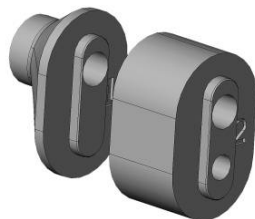


Fig. 7

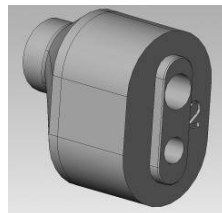


Fig. 8

For displays with protruding HDTV tuner packs or deeply curved backs (Fig. 6), a combination of the 5/8" and 3/4" spacer (1 & 2) should be used. Stack the two spacers (Figs. 7 & 8), and then install them between the display and the rail.

### ***Hang the Display***

Loosen the tilt tensioning lever, open the tilt mechanism fully, and then re-tighten with the tilt lever pointing down. (Fig. 12)

With the help of an assistant, lift the display into position in front of the wall plate. Align the slots on the mounting rails with the rods on the wall plate, and then lower the display onto the rods. (Fig. 12) **Make sure that both rods are fully engaged before releasing the display.**

**Note:** Prior to lifting the display, make sure that the flip lock is in the open position, as shown in Fig. 12.

Once in place, the lateral position of the display can be adjusted by gently sliding it along the rods.

### ***Lock the Display***



Lock Open



Lock Closed

Engage the lock by flipping the locking tab into place over the rod; this will prevent the display from being inadvertently dislodged from the wall mount. For additional security, install a small padlock up to a 1/4" (6mm) shank diameter through the provided lock holes.



Fig.12

### ***Tilt the Display***



**Fig. 13**

**Important:** Always support the upper edge of the display when adjusting the tilt angle.

To adjust the tilt angle, loosen both tilt tensioning levers just enough so that the display can be moved by applying pressure to the upper edge. With the desired tilt angle set, re-tighten both tilt tensioning levers. (Fig. 13)

**Note:** The tilt tensioning lever includes a ratchet function, so that it can be lifted and repositioned for the next turn. To operate the ratchet, pull the lever straight out, rotate it to an unobstructed position, release the lever, and then turn it in the desired direction. Repeat as necessary until the tilt tension is set properly.

### ***Expanding the Mount***

With the addition of the supplied *Extension Rails* and *Extension Rods*, the mount can be re-configured for large and wide displays. (Fig. 14)



**Fig. 14**

### ***Using the Extension Rails***

On large displays, where the vertical distance between the mounting holes on the back of the display exceed the length of the mounting slots on the standard rails, the mounting rail extensions must be installed.



**Fig 15**



**Fig 16**

#### **To install the rail extensions:**

1. Remove the nuts from the rail extension mounting posts (Fig. 15)
2. Place rail extension over the standard rail (Fig. 16)
3. Re-install nuts on mounting posts and tighten securely

### Using the Extension Rods

**Caution:** The safety washer (M) **MUST** be installed whenever using the rod extensions.

There are two situations for using the extension rods:

1. The horizontal distance between the mounting holes on the display, causes the mounting rails to exceed the maximum 30" (76 cm) width of the standard wall plate. (Fig. 17)

In this case, install all four of the extension rods. Once the extensions are installed, simply hang the mounting rails onto the outer extensions. (Fig. 18)

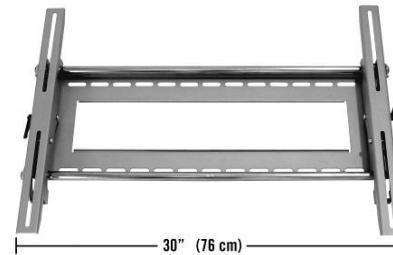


Fig. 17

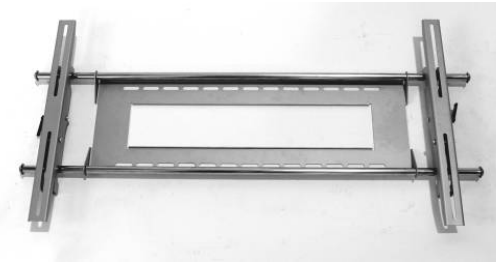


Fig. 18

2. The lateral adjustment range of the display is limited due to widely spaced mounting rails. (Fig. 19)

In this case, install two extensions rods on the side where the display needs additional range. (Fig. 20)

Re-hang the display with one rail sitting on the extension and the other on the main rod.

**Note:** Lateral adjustment range will be limited to a maximum of 6" (15 cm) when using the extension rods. Use care when sliding the display.

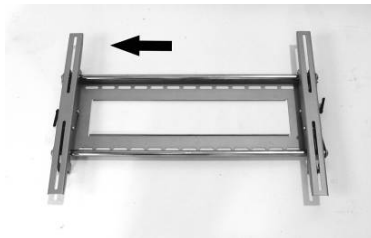


Fig. 19

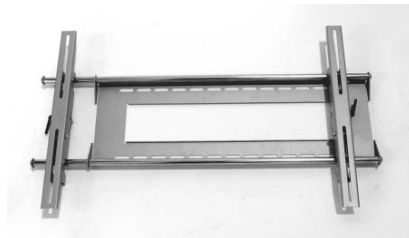


Fig. 20

### To install the extension rods:

1. Use large hex wrench (supplied) to remove the button head cap from the end of the rod.
2. Install large round safety washer (M) onto the button head cap, and then thread the cap onto the end of the extension rod. (Fig. 21)
3. Thread the extension rod into place. (Fig. 22)
4. Repeat procedure for each extension rod to be installed.

**Note:** The safety washer (M) **MUST** be installed when using the rod extensions, to prevent the display from being pushed off the mount.



Fig. 21

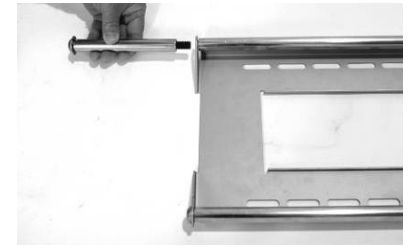


Fig. 22