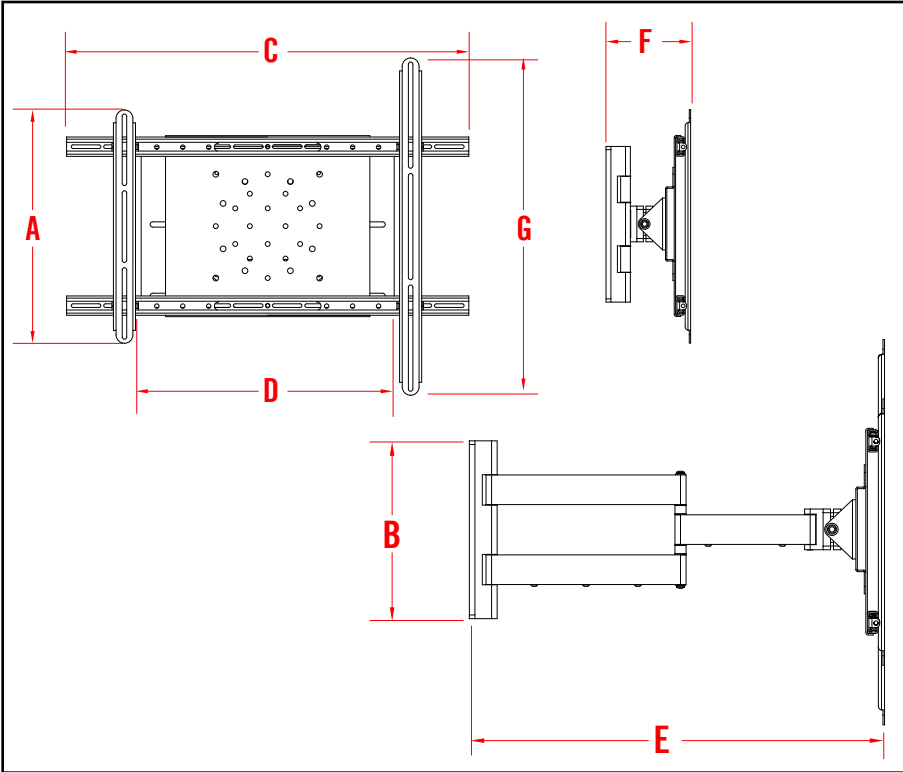


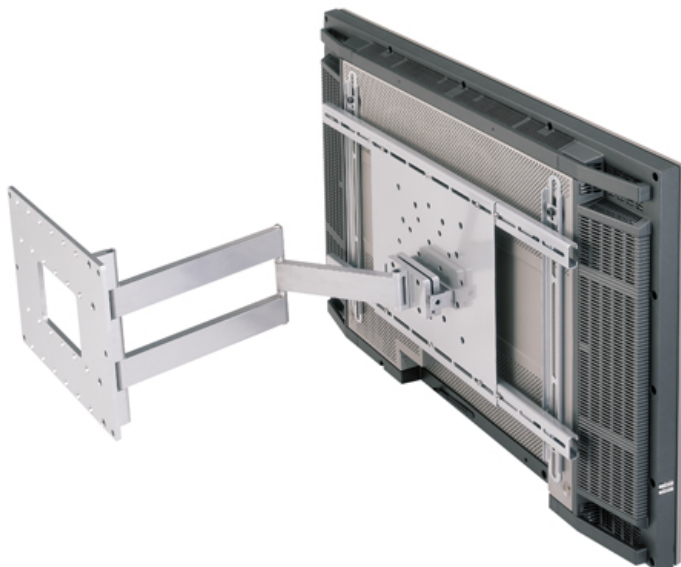
48ARMUA

48 ARTICULATED RETRACTABLE MOUNT UNIVERSAL ADAPTER



TECHNICAL SPECIFICATIONS

A	18.00"	457.20mm
B	12.00"	304.80mm
C	31.00"	787.40mm
D	18.30"	464.82mm
E	25.50"	647.70mm
F	5.70"	144.78mm
G	26.00"	660.40mm



Complete assembly of 48ARM and 48UAA-A universal adapter plate

- Low profile design: folds flat against wall
- Double stud wall plate: max 17" (432mm) stud separation
- Includes complete mounting hardware kit
- VESA compliant 100 to 200x200
- Available in silver and black
- 125 lb. (56.7 kg) maximum weight capacity